

# Common Issue - Mitre Cuts Cutting Short

If the length of pieces with mitred ends are too short from the saw, there are some simple root causes to check

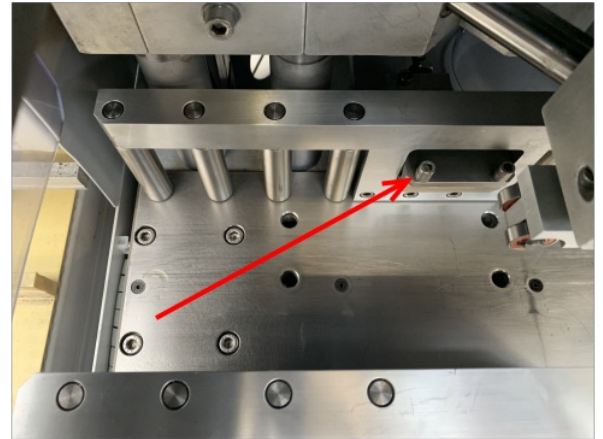
## Contents

Comments

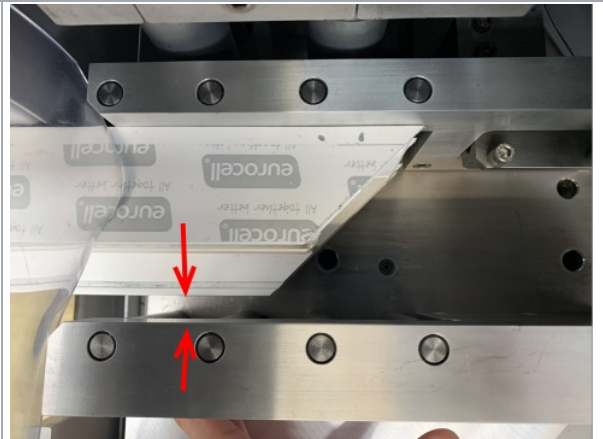
**i** ...The profile needs to be pushed up to the rear fence to cut accurately. If anything is preventing this happening, the cuts will be incorrect

The most common faults when frame is being cut short is

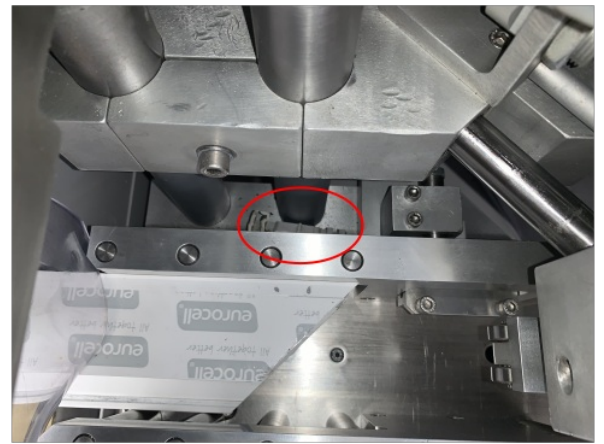
There is a Z block on the rear fences sticking out because of a swarf build up behind it



The side fences are not pushing the profile all the way to the rear fences



The centraliser mechanism is not all the way back because an offcut is trapped stopping the movement



The saw infeed is stopping the profile being correctly positioned on the rear fences.