

ZX5 Installation Procedure 2023 Part 3 Guarding Conformity checks

Guarding conformity checks

 Difficulty **Medium**

 Duration **1 minute(s)**

Contents

Introduction

Step 1 - Quality checks for Guarding safety

Step 2 - Module A Safety light Curtain

Step 3 - Module A lower fence assembly

Step 4 - Module A end fence D0015963 and E/Stop

Step 5 - Module A Mid fence E/Stop

Step 6 - Module A cabinet plate D0016036 fitting

Step 7 - Module A / B infill panel

Step 8 - Module B waste bin guard D0015986 1 off per side

Step 9 - Module B/C infill panel D0016038

Step 10 - Module B/D infill Panel D0016171

Step 11 - Module C crank guard D0016051 2 off

Step 12 - Module C E/Stop Middle position

Step 13 - Module C E/Stop extraction end position

Step 14 - Module E E/Stop extraction end position

Step 15 - Module E E/Stop middle position

Step 16 - Module E crank guard D0016051 2 off

Step 17 - Module E/F saw Cabinet infill plate D0016018

Step 18 - Module E fence infill panel D0015526

Step 19 - Module D/F Infill panel D0016172

Comments

Introduction

Key data for installation of ZX5

Dokit to generate consistency of installation

Quality checks for installation

Manufacturing data supply

Step 1 - Quality checks for Guarding safety

Guarding/Safety conformity listed for installation check

Please note photos listed below show location of components only. All guards should be adjusted to allow as minimal gap as possible between areas guarded

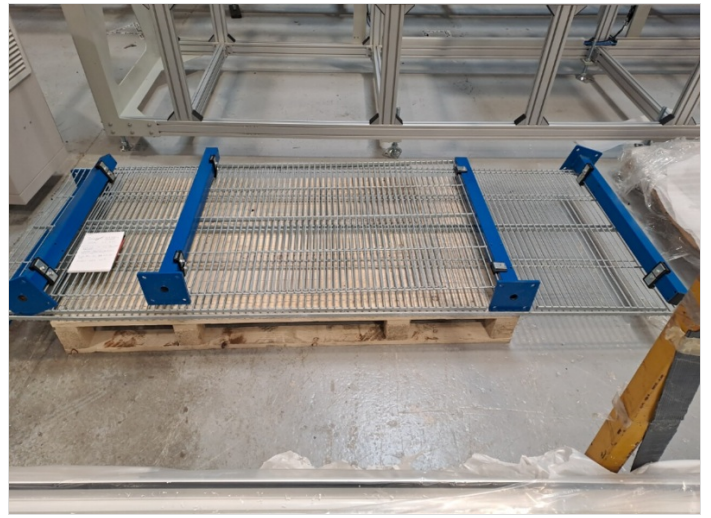


Step 2 - Module A Safety light Curtain

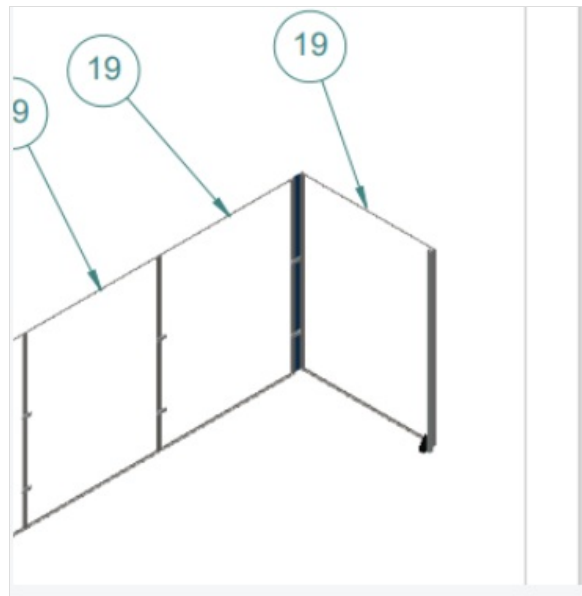


Step 3 - Module A lower fence assembly

Supplied fencing kit is fitted to module A under loader arms



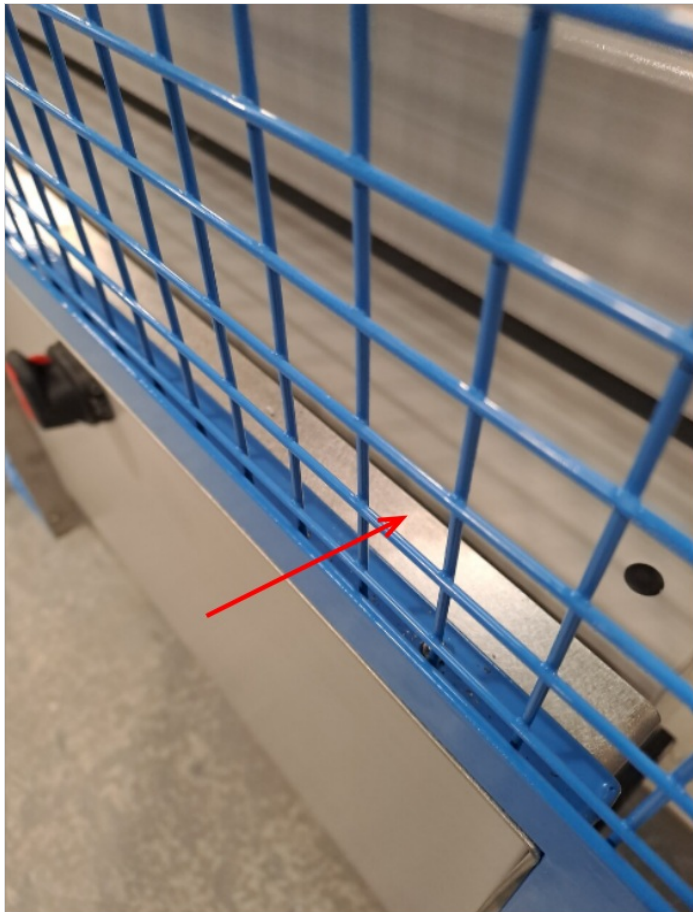
Step 4 - Module A end fence D0015963 and E/Stop



Step 5 - Module A Mid fence E/Stop



Step 6 - Module A cabinet plate D0016036 fitting



Step 7 - Module A / B infill panel



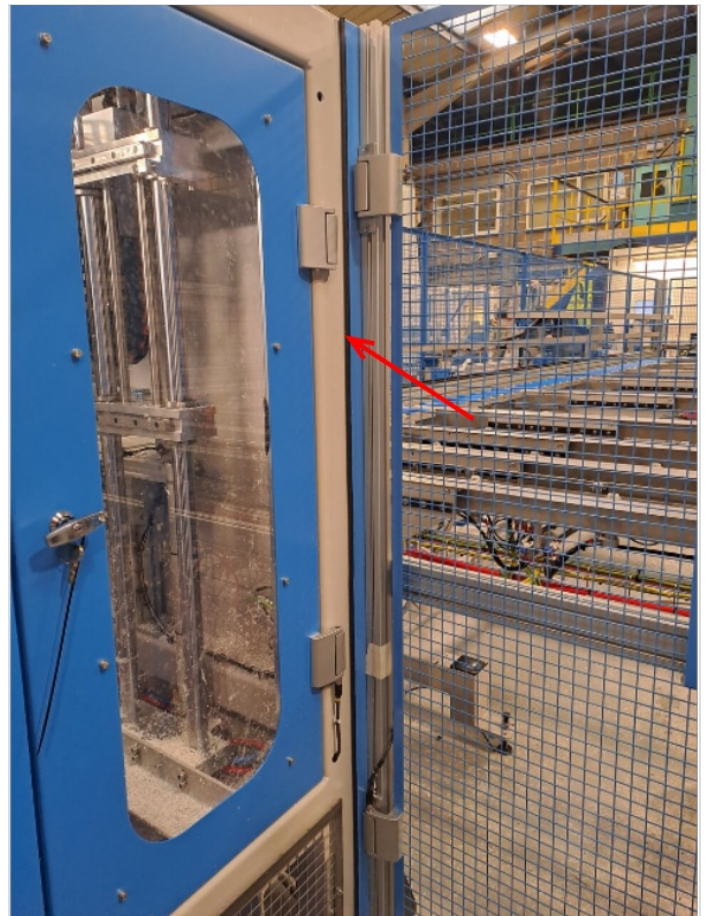
Step 8 - Module B waste bin guard D0015986 1 off per side



Step 9 - Module B/C infill panel
D0016038



Step 10 - Module B/D infill Panel
D0016171



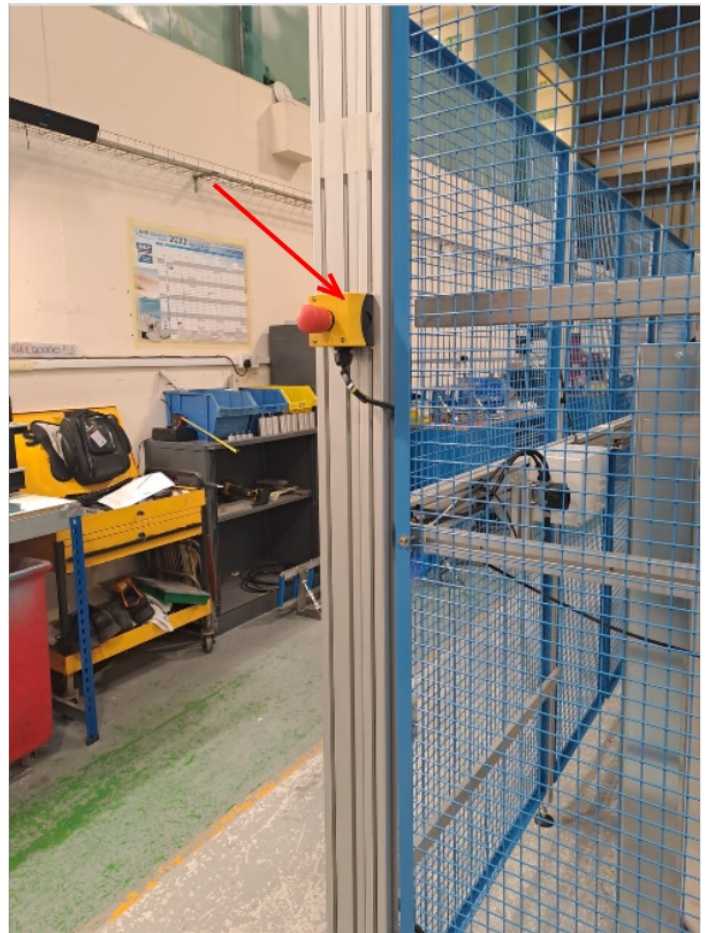
Step 11 - Module C crank guard
D0016051 2 off



Step 12 - Module C E/Stop Middle
position



Step 13 - Module C E/Stop
extraction end position



Step 14 - Module E E/Stop
extraction end position



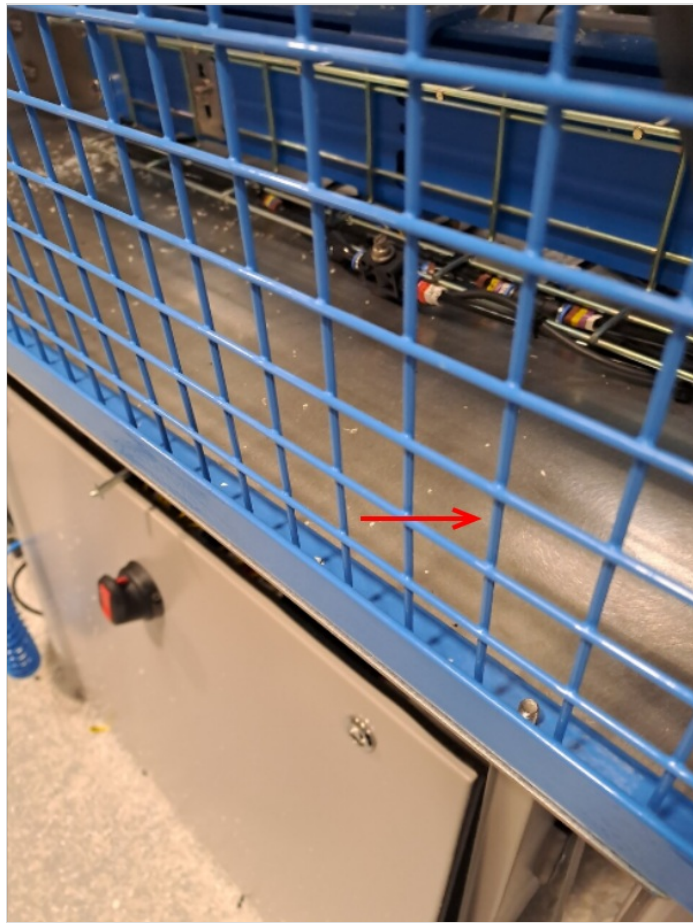
Step 15 - Module E E/Stop middle position



Step 16 - Module E crank guard
D0016051 2 off



Step 17 - Module E/F saw Cabinet infill plate D0016018



Step 18 - Module E fence infill panel D0015526



Step 19 - Module D/F Infill panel D0016172

