

Upgrade - R0000173 Conveyor Motor

Upgrading the motor and associated parts on conveyor R0000173

 Difficulty Easy

 Duration 0 minute(s)

Contents

Introduction

Step 1 - Remove existing motor-g/box and fittings

Step 2 - Fit new conveyor motor mount plate

Step 3 - Fit Motor

Step 4 - Test

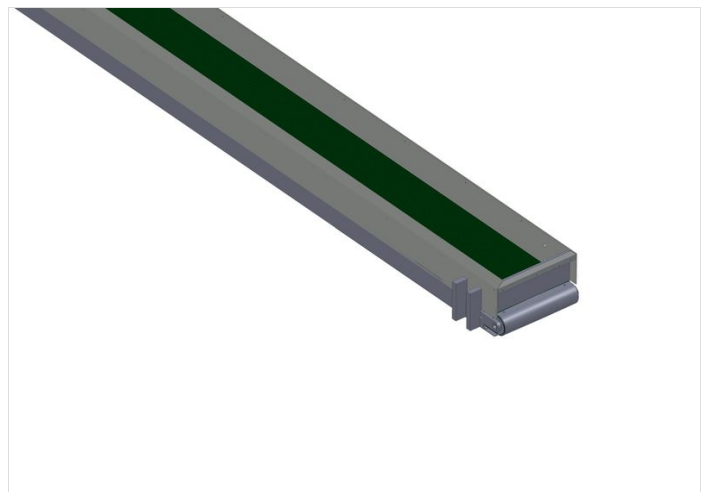
Comments

Introduction

The original style of conveyor is used on many machines, but the motor that powers it is no longer available. This guide will allow a different motor/gearbox to be used.

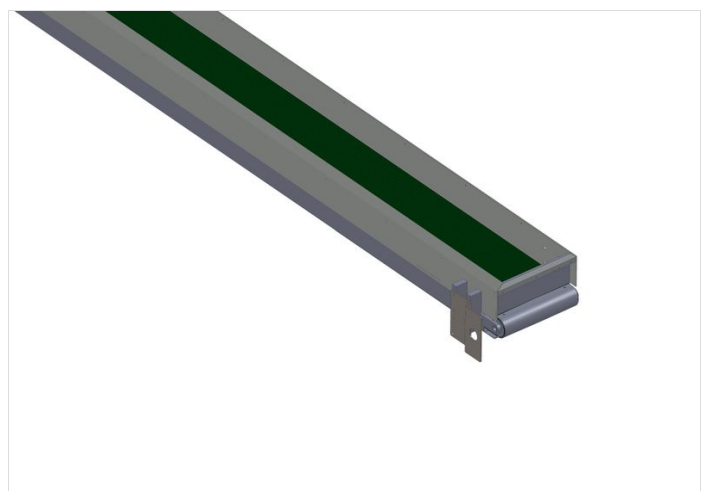
Step 1 - Remove existing motor-g/box and fittings

Remove the existing motor-g/box, shaft and spider coupling



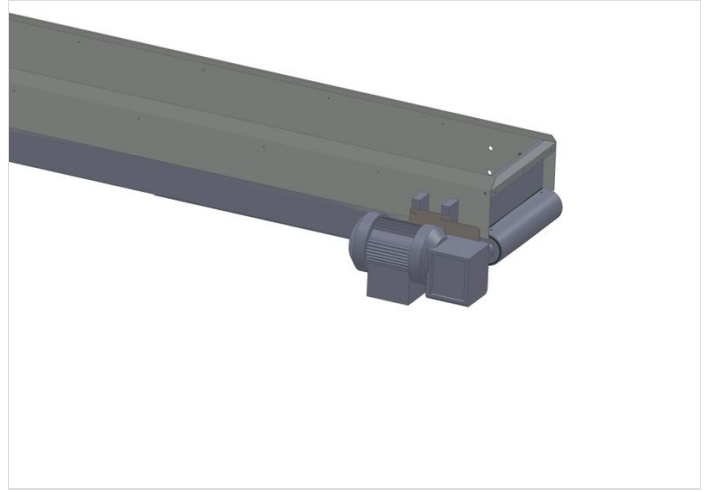
Step 2 - Fit new conveyor motor mount plate

Using supplied fasteners, fit the new motor mount plate to the existing holes on the two upright brackets.



Step 3 - Fit Motor

Fit motor, shaft and spider coupling



Step 4 - Test

Test the motor for application
