


Upgrade - Gripper Slider Mechanism

Upgrade to fit new gripper slide mechanism

 Difficulty **Very easy**

 Duration **60 minute(s)**

Contents

Step 1 - Remove existing slideway and profile lever

Step 2 - Fit the new stronger bearings

Step 3 - Offer up the new profile lever, and fit new shoulder screw

Step 4 - Use the fixtures to firmly attach the profile lever to bearings

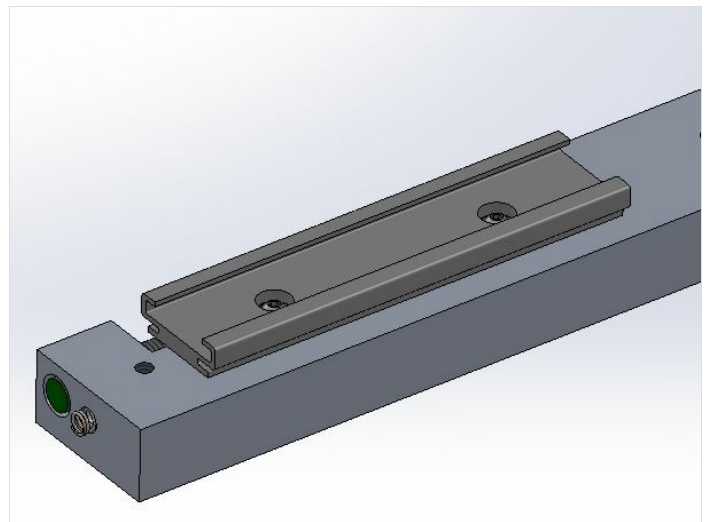
Step 5 - Operational check

Comments

Step 1 - Remove existing slideway and profile lever

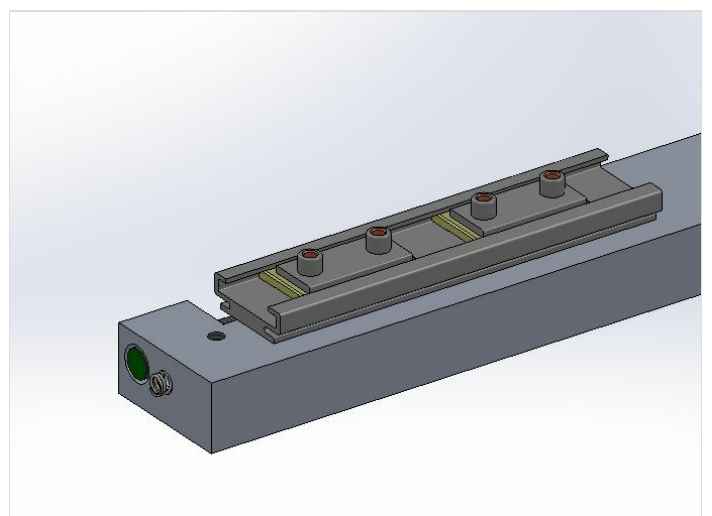
Remove all existing parts, including the profile lever, slideway and bearings, and the spring.

Install new stronger slideway



Step 2 - Fit the new stronger bearings

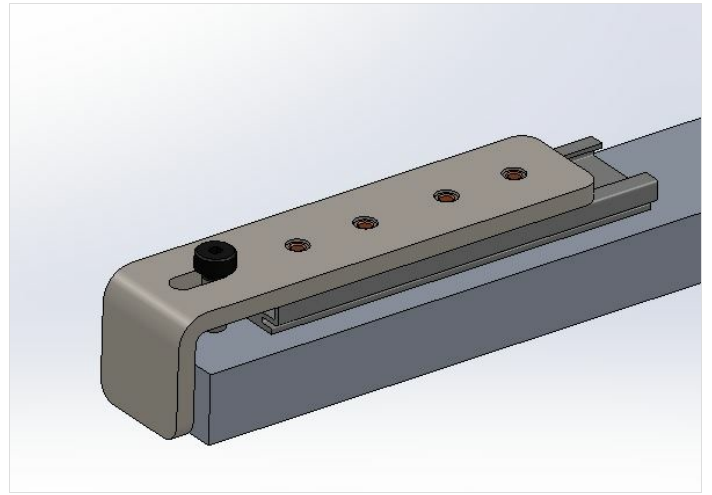
Fit two new stronger bearings, and put new spring into front hole.



Step 3 - Offer up the new profile lever, and fit new shoulder screw

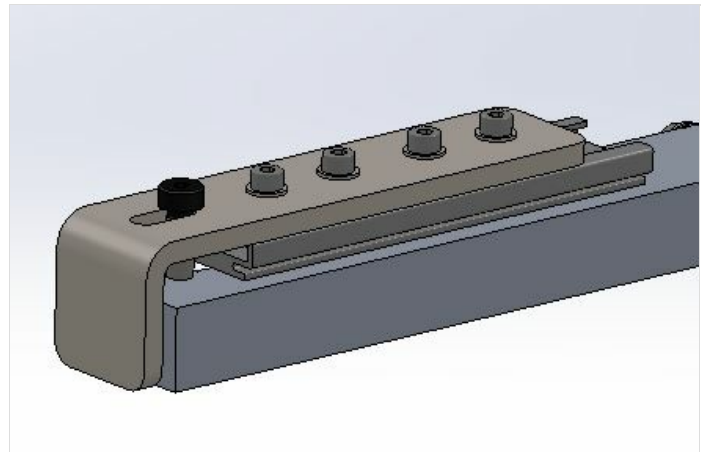
Position the new profile lever over the slideway bearings, so that the bearings positively lock into the holes on the profile lever. Ensure that the spring is encapsulated properly.

Screw in the new shoulder screw and check for forward-backwards movement on profile lever.



Step 4 - Use the fixtures to firmly attach the profile lever to bearings

Screw the profile lever down to the bearings.



Step 5 - Operational check

Check that the profile lever moves backwards under light pressure, and then returns forward via the spring.
