

# Upgrade - Flowline 12 station to 8 station reduction upgrade

This talks through the process of fitting the new transfer arms (complete with float to allow fitment) when upgrading from 12 station to 8 station

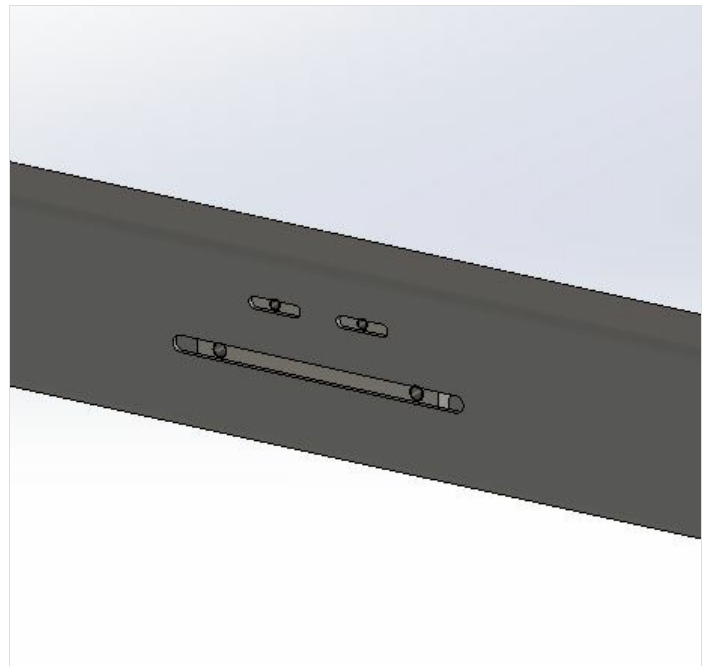
 Difficulty **Medium**

 Duration **30 minute(s)**

## Contents

- Step 1 - Insert backing plate into box section of transfer arm
- Step 2 - Loosely install M6 bolts and washers into backing plate
- Step 3 - Install transfer arm
- Step 4 - Tighten M6 bolts
- Step 5 - Loosely install M6 bolts and washers into backing plate
- Step 6 - Install transfer arm
- Step 7 - Tighten M6 bolts
- Comments

### Step 1 - Insert backing plate into box section of transfer arm



---

### Step 2 - Loosely install M6 bolts and washers into backing plate

This will keep the plate captive, but will allow for movement

---

### Step 3 - Install transfer arm

Transfer arm can then be installed, using the floating M8 tapped holes on the backing plate. Tighten the M8 bolts securely.

---

## Step 4 - Tighten M6 bolts

Once everything is in position, tighten the M6 bolts. This allows the plate to stay in position, even when the machine is broken down for transportation.

---

## Step 5 - Loosely install M6 bolts and washers into backing plate

This will keep the plate captive, but will allow for movement

---

## Step 6 - Install transfer arm

Transfer arm can then be installed, using the floating M8 tapped holes on the backing plate. Tighten the M8 bolts securely.

---

## Step 7 - Tighten M6 bolts

Once everything is in position, tighten the M6 bolts. This allows the plate to stay in position, even when the machine is broken down for transportation.

---