


Upgrade - Ecoline Conveyor Motor

The old motor/gearboxes used are now obsolete, so Stuga is standardising the upgrades to use a regularly used alternative motor/gearbox

 Difficulty Very easy

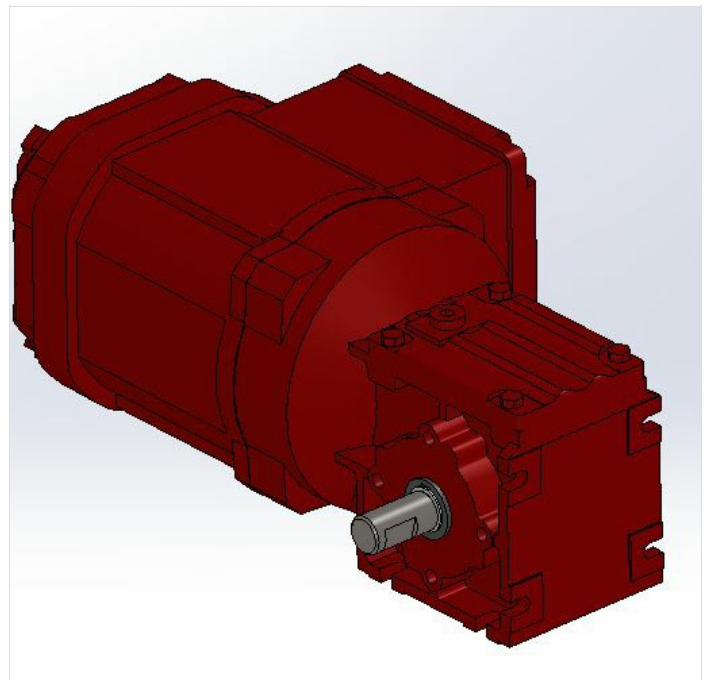
 Duration 10 minute(s)

Contents

- Step 1 - Install shaft and secure
- Step 2 - Mount the motor/gearbox to the mount plate
- Step 3 - Secure the machined coupling on the shaft
- Step 4 - Attach mounting plate to conveyor frame
- Step 5 - Ensure good mesh on shaft
- Step 6 - Electrical connections
- Comments

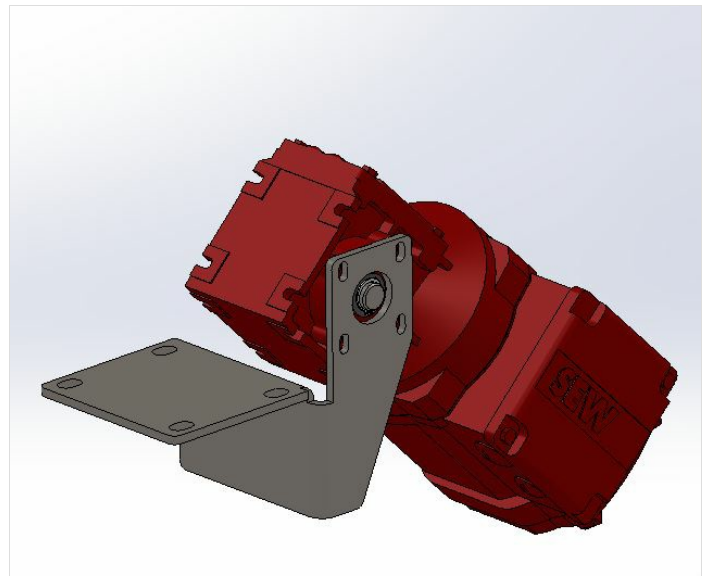
Step 1 - Install shaft and secure

Slide the shaft into the gearbox, and secure in position with the circlips



Step 2 - Mount the motor/gearbox to the mount plate

Secure the motor/gearbox into position on the mount plate, in the orientation shown, using the M6 bolts and washers



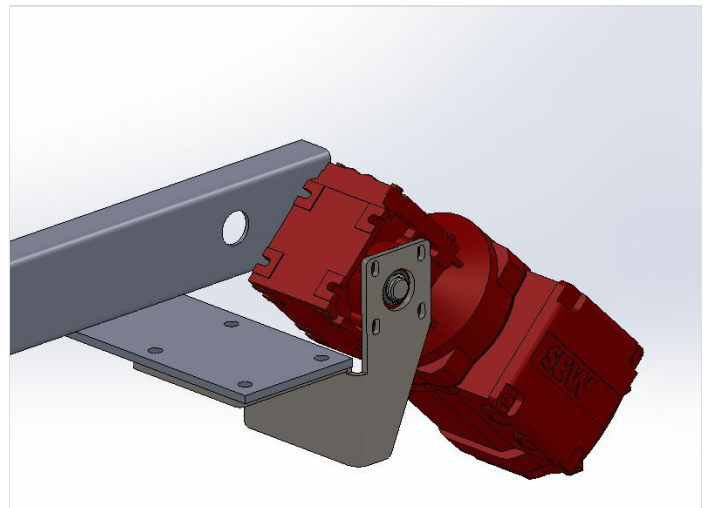
Step 3 - Secure the machined coupling on the shaft

Offer up the machined coupling to the shaft

Step 4 - Attach mounting plate to conveyor frame

Attach the mounting plate to the conveyor frame, noting that the mounting plate goes UNDERNEATH the plate on the frame.

Secure using the M8 nuts, washers and nyloc nuts.



Step 5 - Ensure good mesh on shaft

Ensure good mesh on shaft and secure the coupling on shaft

Step 6 - Electrical connections

Connect the motor up to the electrics, and test.
