



Updating the Touchscreen Driver

This tutorial will walk you through how to update the touchscreen driver on any machine with either one or two touchscreens.

 Difficulty Easy

 Duration 10 minute(s)

Contents

Step 1 - Uninstall the current touchscreen driver

Step 2 - Download the new touchscreen driver

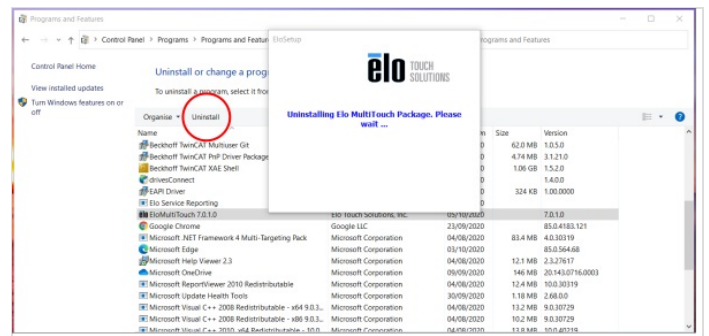
Step 3 - Install the new touchscreen driver

Step 4 - Calibrate the touchscreens

Comments

Step 1 - Uninstall the current touchscreen driver

- Go to Control Panel > Programs and Features > Uninstall a program
- Scroll to 'EloMultiTouch' and click uninstall. Touchscreen will still work at this point as the Windows system takes over. However the new one still needs to be installed to allow for calibration.



Step 2 - Download the new touchscreen driver

- Go to <https://www.elotouch.com/support/downloads#/>
- On 'Select Product Category' (1) select 'Touch Drivers'
- On 'Select Operating System' (2) select whatever operating system the PC you are installing the driver on is running i.e Windows 10.
- On 'Current and Legacy' (3) select 'Current'
- You will be left with two options 'Multi-Touch Driver' and 'Single-Touch Driver'. Click on 'Multi-Touch Driver' (4). This will begin the download.

Drivers, Files & SDK Downloads

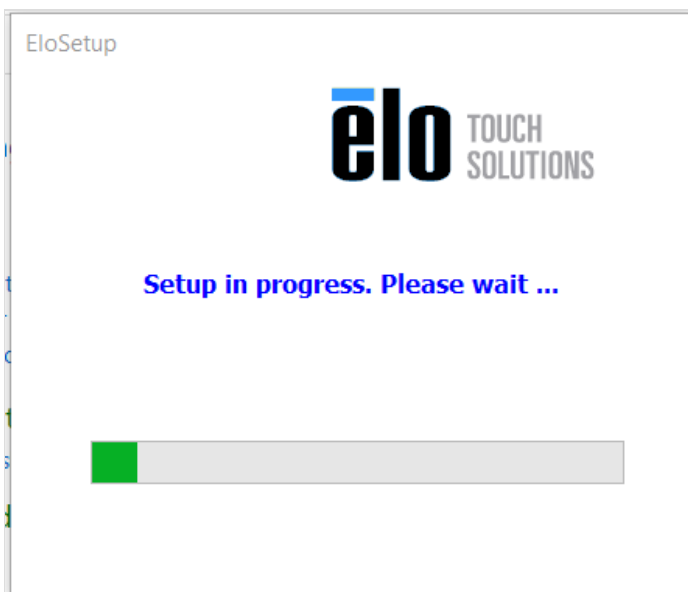
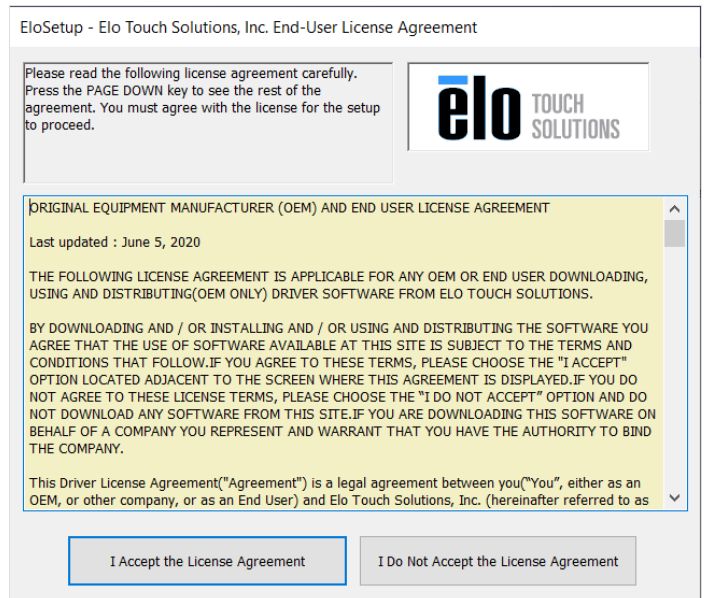
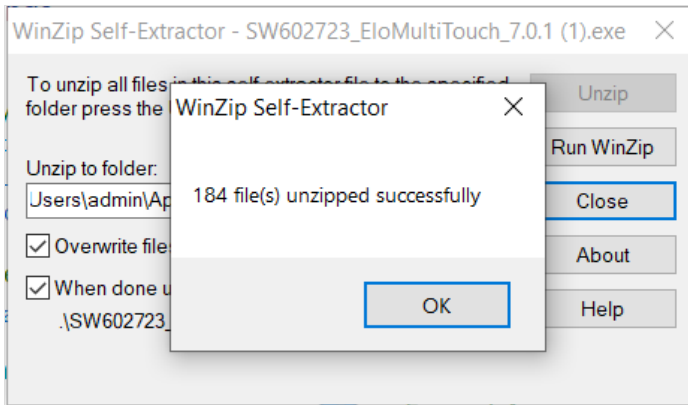
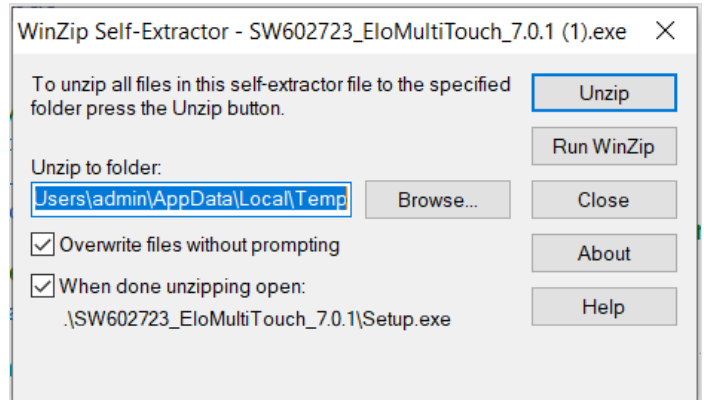
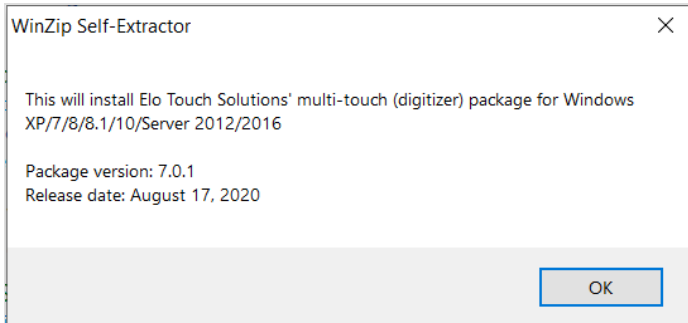
Welcome to our download tool. By downloading a driver, you agree to the terms and conditions of the applicable End User License Agreement (EULA) on behalf of yourself and the company you represent. View the applicable EULA by clicking on the EULA link in the Notes. Choose a category to begin:

Touch Drivers **1** Windows 10 **2** Current **3** Single & Multi-Touch

Driver Download	Version	Supported Technologies	Notes
Multi-Touch Driver 4	7.0.1	TouchPro® (PCAP), IntelliTouch® (SAW), IntelliTouch® Plus (s-SAW), AccuTouch® (Resistive), CarrolTouch® (IR), iTouch/Touch Plus, PulseTouch, Surface Capacitive, Optical	(67.8 MB) Release date: 17-Aug-2020. User Manual EULA Release Notes
Single-Touch Driver	5.8.2	Optional driver for All Elo touch technologies. IntelliTouch® Plus is supported for devices using the 2520/2521 touch controllers only.	(18 MB) Multiple monitor support. Release date: 02-Mar-2018. EULA

Step 3 - Install the new touchscreen driver

- Open the downloaded file. This will begin the install.
- Click 'OK'
- Click 'Unzip'
- Click 'OK'
- Click 'Yes'
- Click 'I Accept the License Agreement'
- Wait for setup to finish
- Click 'OK'



Step 4 - Calibrate the touchscreens

- Open 'Elo Config'
 - Click 'Calibrate Touch Screens..!'
 - On a machine with two touchscreens the crosshairs will appear on each one in turn. Follow the instructions on screen making sure to not touch either the side or any other part of the screen other than the crosshairs.
 - Test the new calibration by touching random parts of the screen and dragging your finger across the screen and making sure the cursor follows it.
 - Accept the result or reject and run the calibration again.
 - On a machine with one touchscreen and one non-touch screen the program may try and get you to calibrate the non-touch screen. Press 'Esc' to skip this screen.
-