



Updating Zebra Firmware on ZD620 model

How to use the ZDownloader to update the Firmware on Zebra ZD620 printers.

 Difficulty Easy

 Duration 15 minute(s)

Contents

Introduction

Step 1 - Locate zip files for downloader + ZPL version file.

Step 2 - Install 'Zdownloader'

Step 3 - Open Zdownloader

Step 4 - Detect Printer

Step 5 - Selecting Firmware file.

Step 6 - Download Firmware file to the printer

Comments

Introduction

Auto calibration upon Power up on the ZD620 printers only works with V84.20.20Z or above, for this reason we may need to check the firmware version on the Printer.

Step 1 - Locate zip files for downloader + ZPL version file.

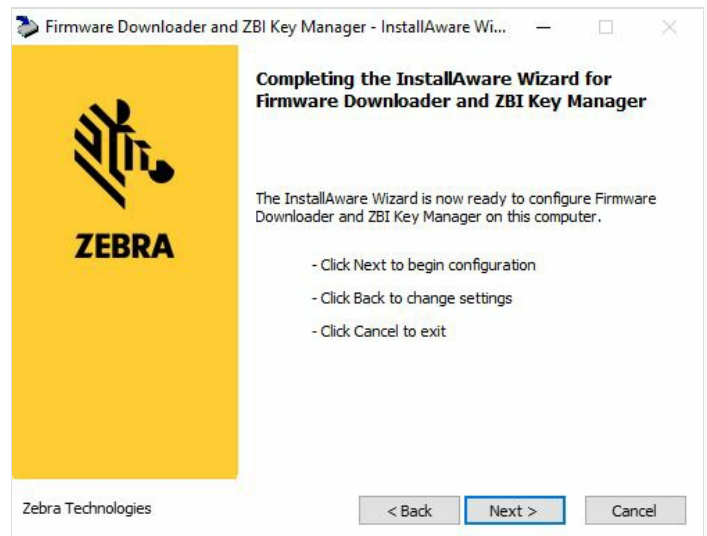
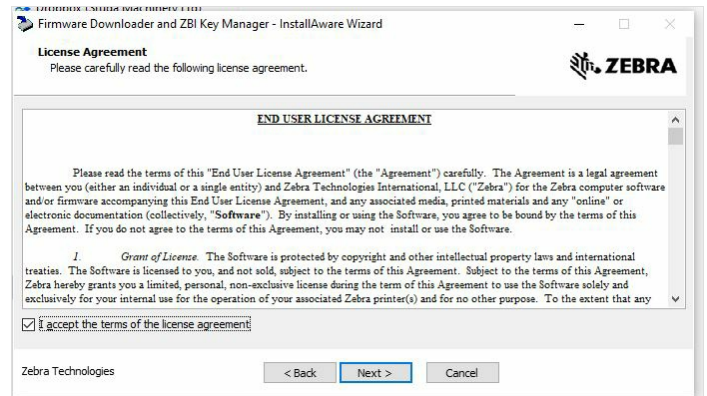
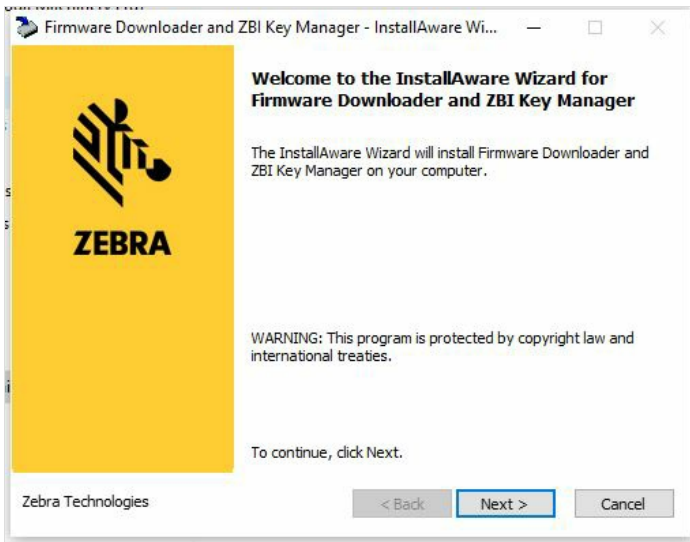
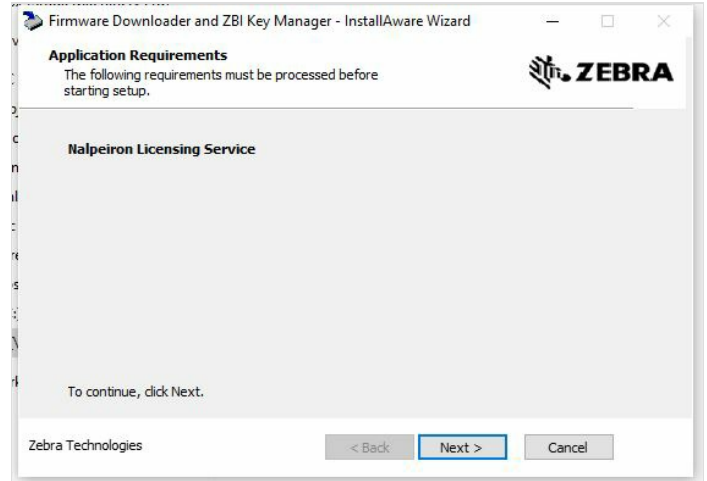
Both the zip files for the install of the Zdownloader and the ZPL version file can be located in G:\Builds\Install Files\Zebra Firmware.

there is a manual for using the Zdonloader in with the zip file containing the ZPL version file .

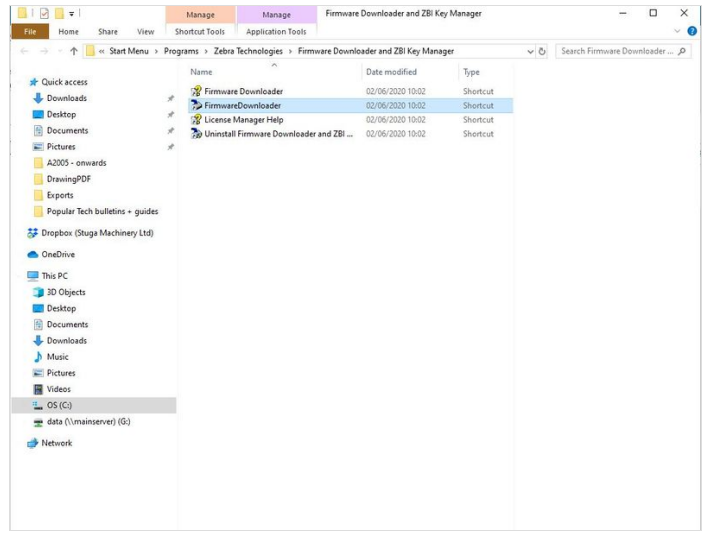
Step 2 - Install 'Zdownloader'

Extract the application from the zip file , run and follow the install wizard.

Name	Type	Compressed size
zdownloader-30128.exe	Application	14,92



Step 3 - Open Zdownloader



Step 4 - Detect Printer

The printer can be detected either through Ethernet connection or USB.

Go To 'Printer' and select 'Auto Detect'

This will detect the printer.

If plugged in by USB as well as Ethernet, the same printer will appear more the once on the list.

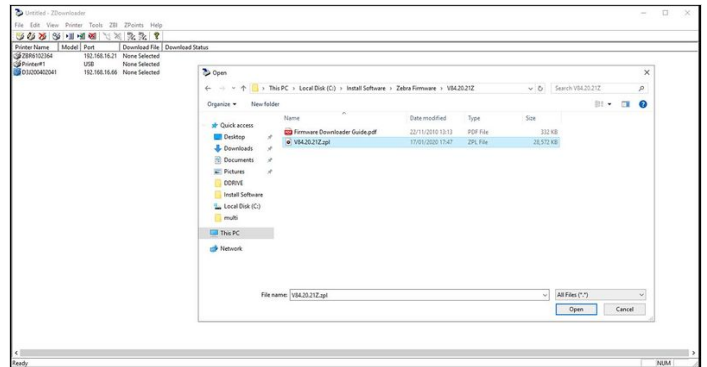
To make sure the correct printer is selected, you can print a test page from the drop down menu when right clicking.



Step 5 - Selecting Firmware file.

On the correct printer right click , then on the drop down menu click 'Select Firmware File'

Find the location of the extracted ZPL version file, click 'Open'



Step 6 - Download Firmware file to the printer

When the Firmware file has been selected the file location will appear in the 'Download File' column.
Right click again on the printer and select 'Download to Selected'

Once complete the firmware version has been downloaded to the Printer, it should then run a calibration and test page off.

The Zdownloader can be exited without saving as it only saves the printer detection list.

