


# Updating Beckhoff TwinCAT3 Backend Version

How to update Beckhoff TwinCAT3 on bechhoff PC

 Difficulty Easy

 Duration 30 minute(s)

## Contents

Introduction

Step 1 - Check the current version

Step 2 - Download the XAR version from G Drive

Step 3 - Run the update

Step 4 - Reload the project

Step 5 - Activate configuration

Step 6 - Ensure the PLC code is running

Comments

## Introduction

The TwinCAT3 bechhoff systems have a special version of TwinCAT installed - the "Runtime" version XAR (eXtended Automation Runtime). This differs from the full "Engineering version XAE that is installed in the front end and camera PCs in that it is the bare bones of TwinCAT for machine running purposes. **It does not have the Visual Studio editor in it.**

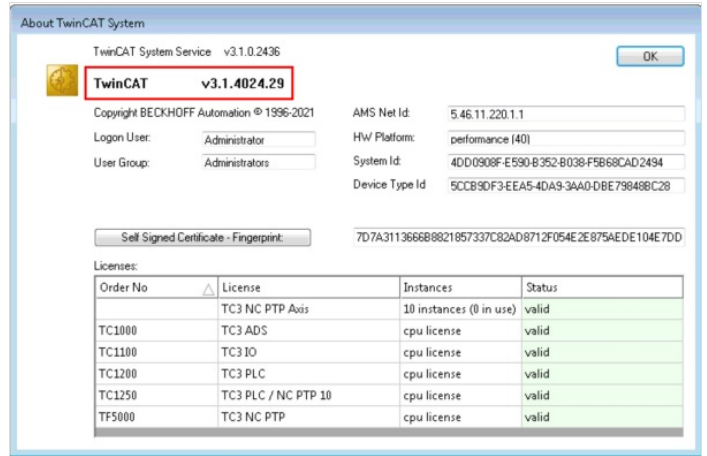
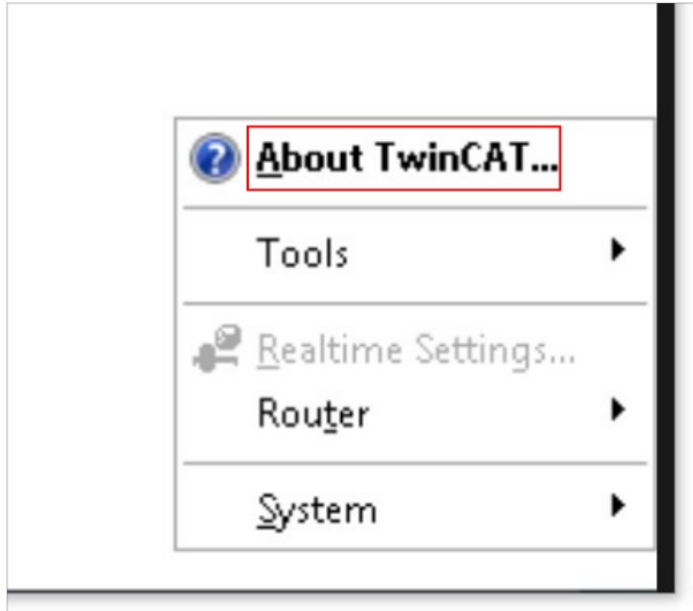
The runtime version may need updating to 3.4024.xx to allow the latest front end and PLC code to work

# Step 1 - Check the current version

On the desktop of the Beckhoff PC, right click the TwinCAT Icon in the taskbar and select "About TwinCAT..."

TwinCAT version is displayed. 3.4024.xx is needed

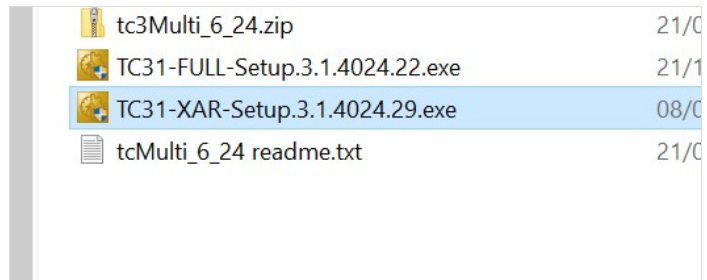
**i** ...The .xx is the build number. Generally, all .xx will be compatible, they release a new build number for bug fixes but will change the main version number when it becomes incompatible



# Step 2 - Download the XAR version from G Drive

The XAR version, not the FULL version

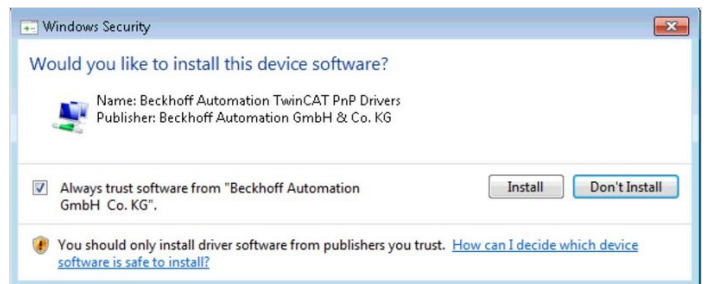
Download it via teamviewer to the desktop of the Beckhoff PC you are updating



# Step 3 - Run the update

Double click to run the update

Click on ok for all defaults and allow all software from Beckhoff

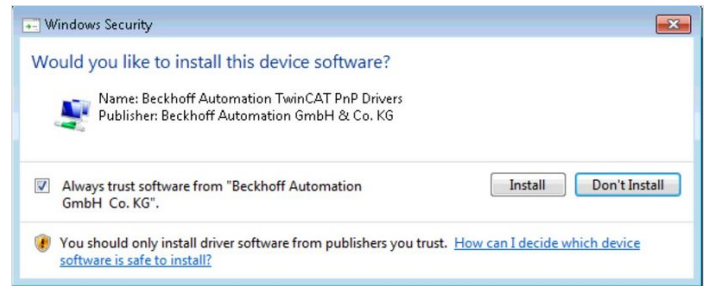


# Step 4 - Reload the project

On the "visual Studio" Pc, restart visual Studio and reload the project.

The system may ask to update the Safety Project (if this is a TwinSAFE machine). This is necessary.

## Step 5 - Activate configuration



## Step 6 - Ensure the PLC code is running

Check the code is running by looking at the version control file.

**i** ...If the code is not running, the number highlighted in the orange boxes (version number) will be 0. Correct running will show the first significant digits of the version number - in this case 6.4

If it is not running, restart the PLC and reload the project and Activate configuration again

If this still does not work, contact Beckhoff or GG

