

Turning Off and Changing Datum Tool

How to turn off a spindle and change the datum tool.

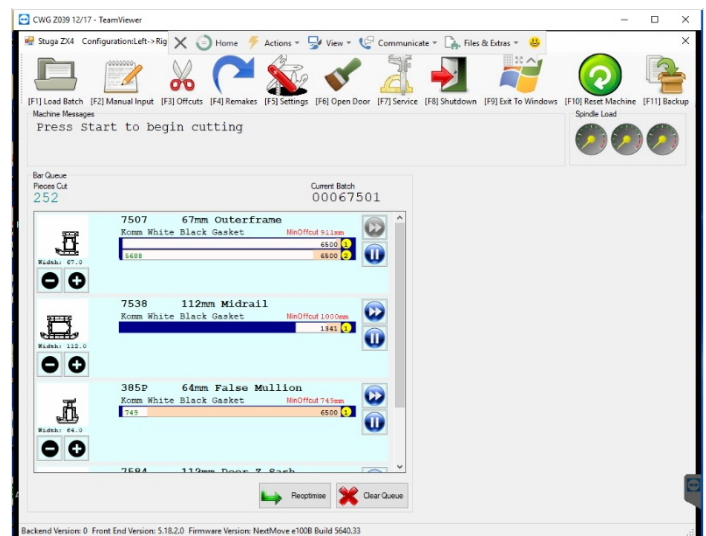
 Difficulty Easy

 Duration 5 minute(s)

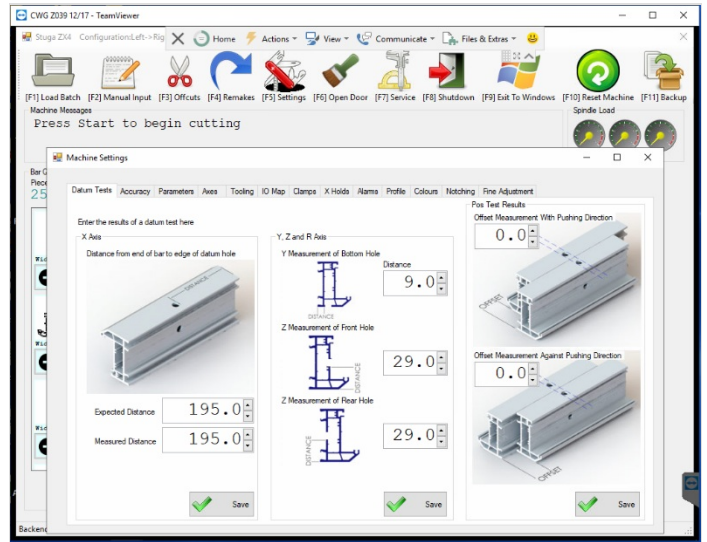
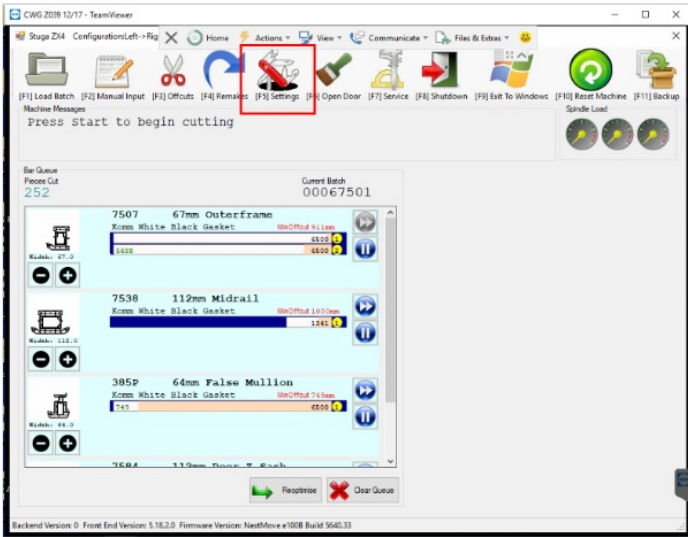
Contents

- Step 1 - Open win Multi
- Step 2 - Press on '[F5] Settings' tab
- Step 3 - Go to the tab "Tooling"
- Step 4 - Turning Spindle Off
- Step 5 - Save Changes
- Step 6 - Changing Datum Spindle. (If necessary)
- Step 7 - Parameters Change
- Step 8 - Setting New Datum Spindle
- Step 9 - Exit software to windows and restart WinMulti.
- Comments

Step 1 - Open win Multi

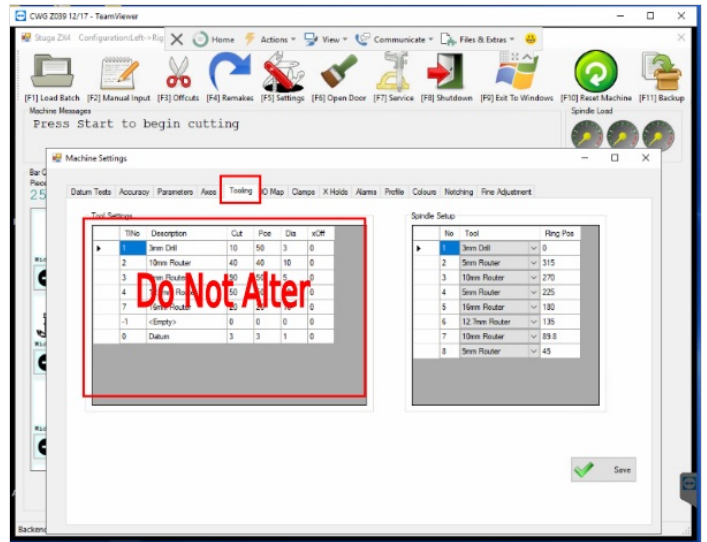


Step 2 - Press on '[F5] Settings' tab



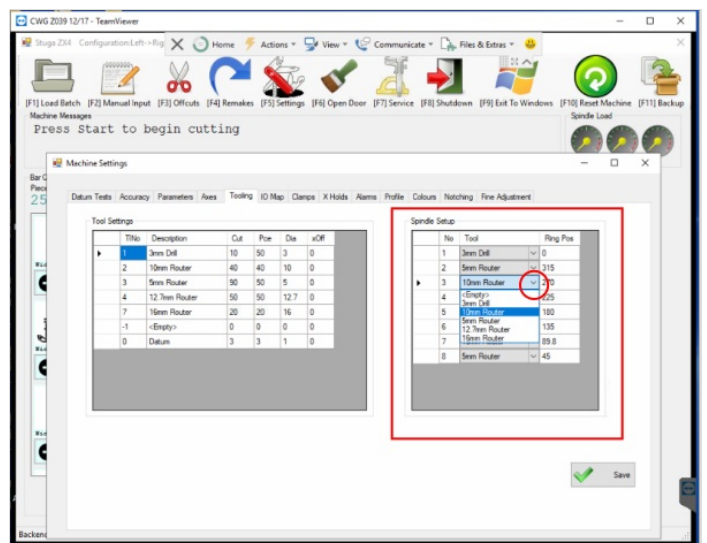
Step 3 - Go to the tab "Tooling"

Do not alter anything on the 'Tool' Settings' side.



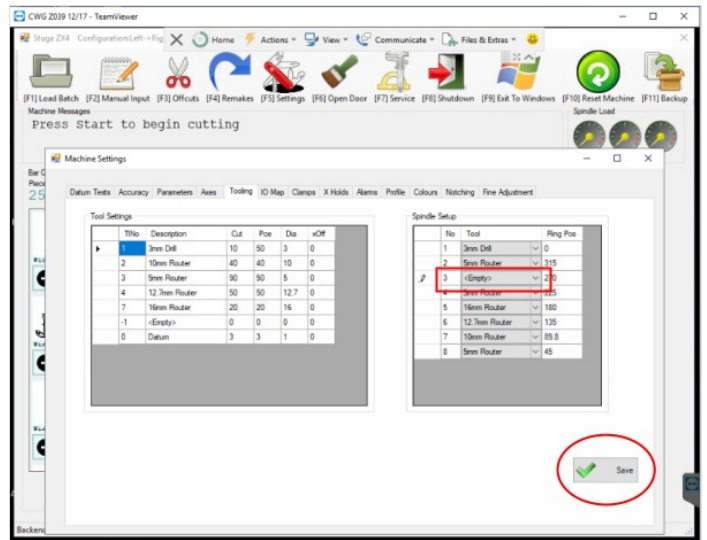
Step 4 - Turning Spindle Off

Using the 'Spindle Setup' menu box, select the spindle to be turned off. Using the drop down arrow circled, change the spindle 'Tool' to <Empty>



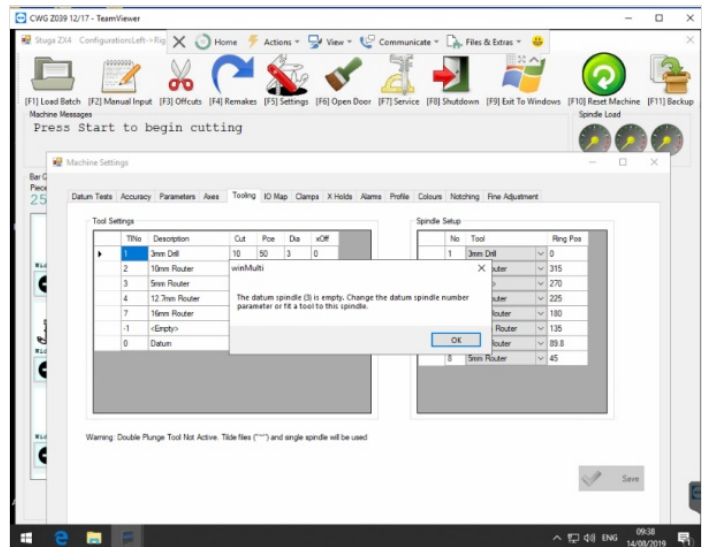
Step 5 - Save Changes

The selected spindle's 'Tool' should now be set to <Empty>. Now press Save.



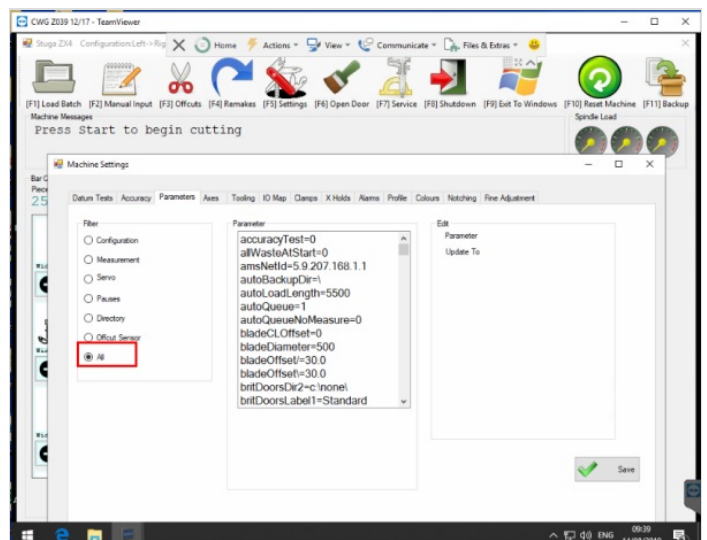
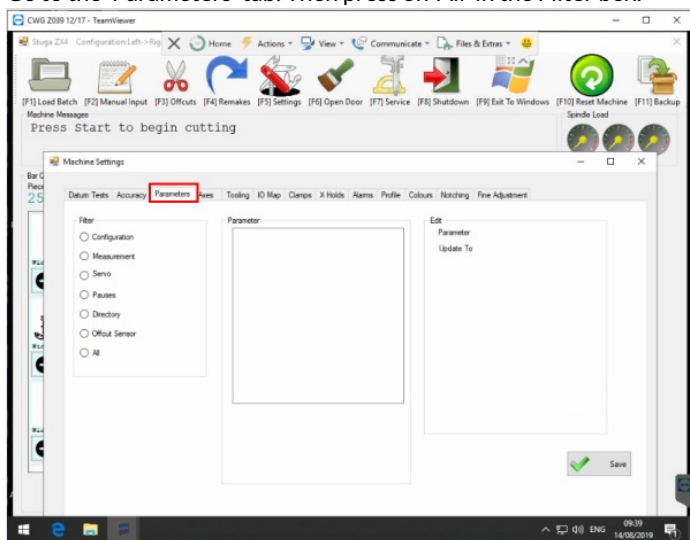
Step 6 - Changing Datum Spindle. (If necessary)

If the changed spindle is the datum spindle, this message will appear. A different spindle must be selected in the machines parameters.



Step 7 - Parameters Change

Go to the 'Parameters' tab. Then press on 'All' in the Filter box.



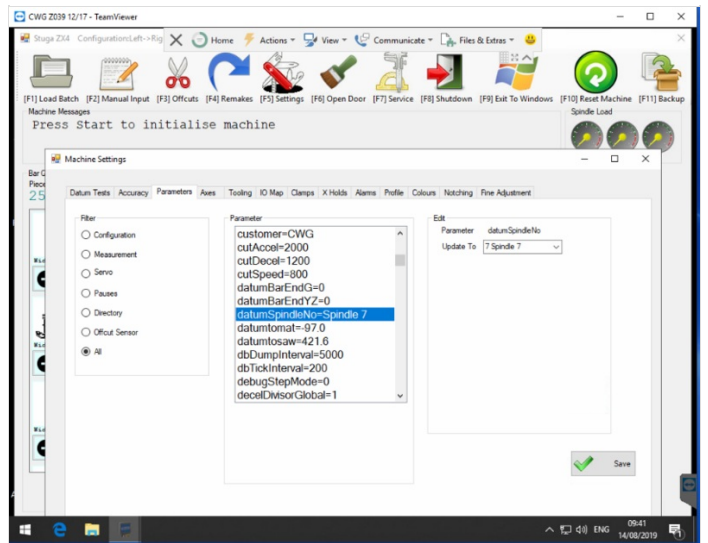
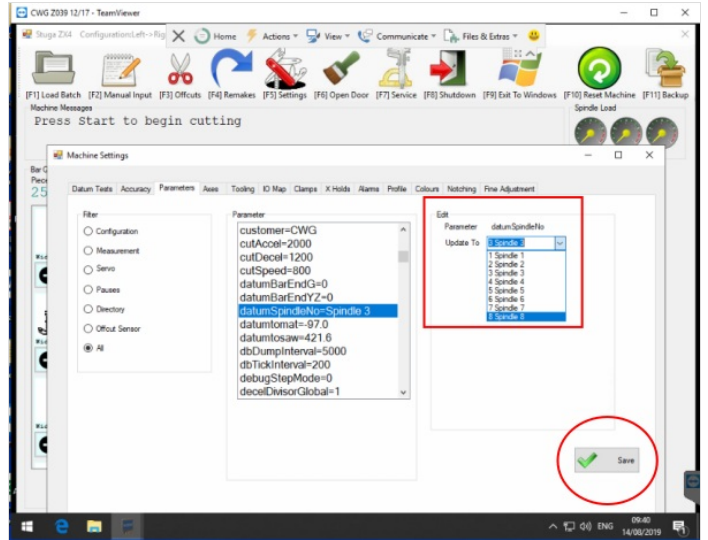
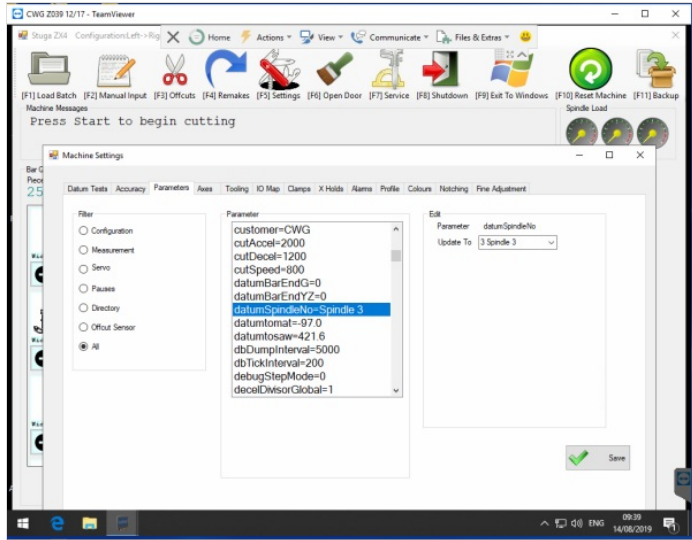
Step 8 - Setting New Datum Spindle

Find the parameter 'Datum Spindle Number' Click to highlight this field.

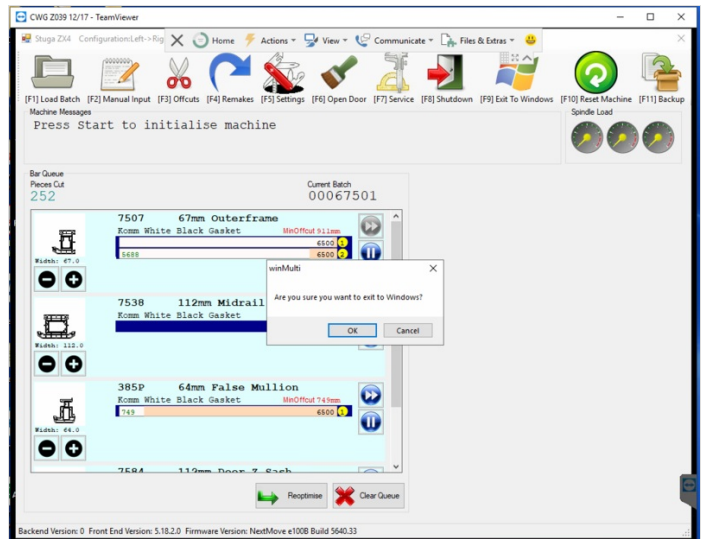
Change the spindle using the drop down box under 'Edit'. Change the datum spindle to a working tool that has not been turned off. Then Press 'Save'

The Parameter will now update.

⚠ Please note the Datum Tool Must be a 10mm router/Drill bit.



Step 9 - Exit software to windows and restart WinMulti.



.....