


# Training Laser on Ecoline

The laser on an Ecoline needs to be specially set up to measure the profile accurately

 Difficulty **Medium**

 Duration **10 minute(s)**

## Contents

Introduction

Items

Step 1 - Remove the lower guard access plate

Step 2 - Remove the laser dust cover

Step 3 - Focus

Step 4 - Sensitivity

Step 5 - Replace Dust cover


Step 6 - Replace lower guard

Comments

## Introduction

The laser needs to be focused on the work area and not the receiver  
The smaller the dot for the profile to break/make the more accurate the laser

## Items

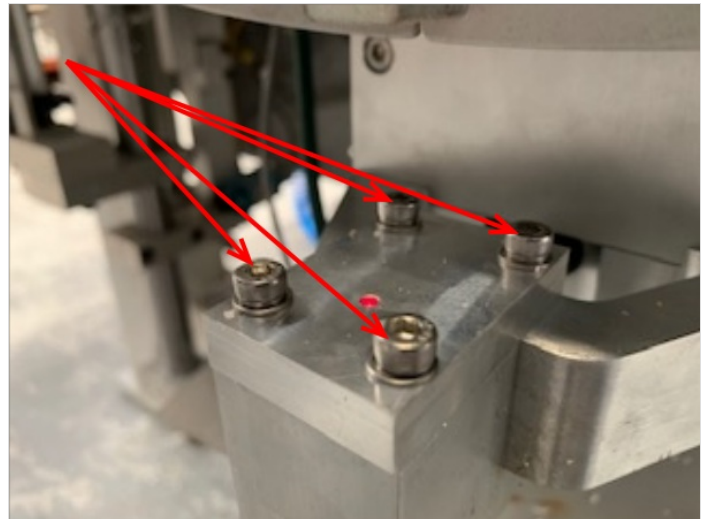
 Laser Focusing Spanner

## Step 1 - Remove the lower guard access plate



---

## Step 2 - Remove the laser dust cover



## Step 3 - Focus

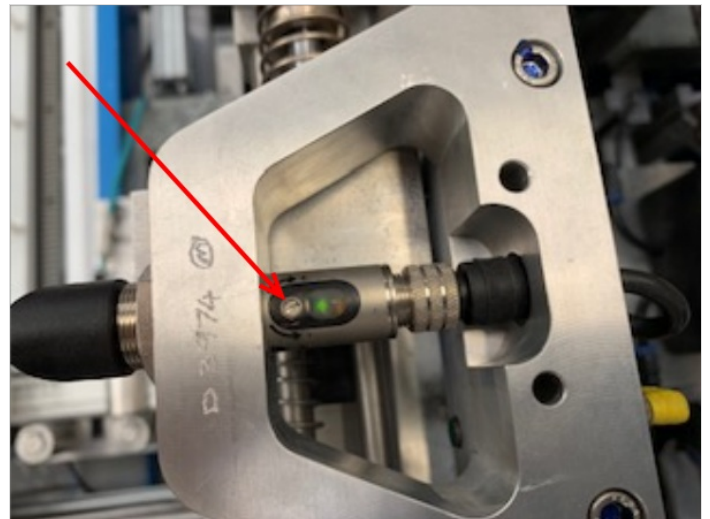
Place a clean, white profile or sheet of paper in the clamps and adjust the Y axis position so the laser dot can be seen below it  
Focus the laser to make the dot as small as possible on the base of the profile



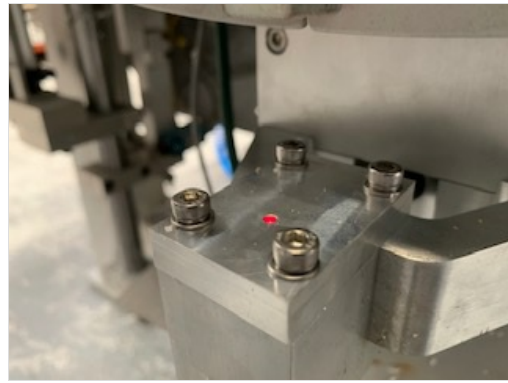
---

## Step 4 - Sensitivity

Sensitivity also needs settings 5 full turns after turning anticlockwise until it goes Sensitivity then turn clockwise until on then the 5 turns.



Step 5 - Replace Dust cover



---

Step 6 - Replace lower guard

---