


# Toshiba - B-EX4T1 Printer Setup

B-EX4T1 Printer Setup for Auto Labeling

 Difficulty Easy

 Duration 20 minute(s)

## Contents

- Step 1 - Inner & Outer
- Step 2 - Rewind Spool
- Step 3 - Printhead access
- Step 4 - Setting Rewinder
- Step 5 - Label Guides
- Step 6 - Sensor Position
- Step 7 - Closing Label Head
- Step 8 - Connecting printer to PC
- Step 9 - Initial Power up
- Step 10 - Using BCP to setup the printer
- Step 11 - Change Settings
- Step 12 - Power printer off and On
- Step 13 - Testing
- Step 14 - Set the IP Address for the Customers network
- Comments

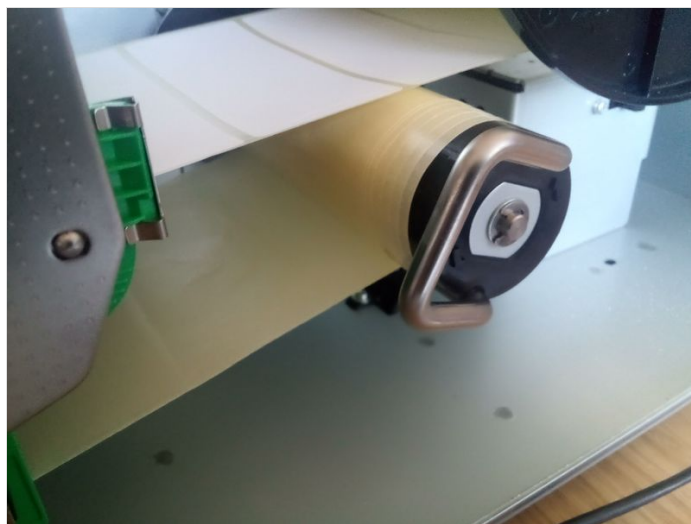
## Step 1 - Inner & Outer

The instructions for both the Inner & Outer wound labels are on the inside of the open lid.



## Step 2 - Rewind Spool

There will be no ribbon and as the settings will be for Peel Off a length of blank backing needs to be fed onto the Rewind spool



---

## Step 3 - Printhead access

To gain access turn the green knob to FREE. You can then pull the front plate down and lift the printer head up.



---

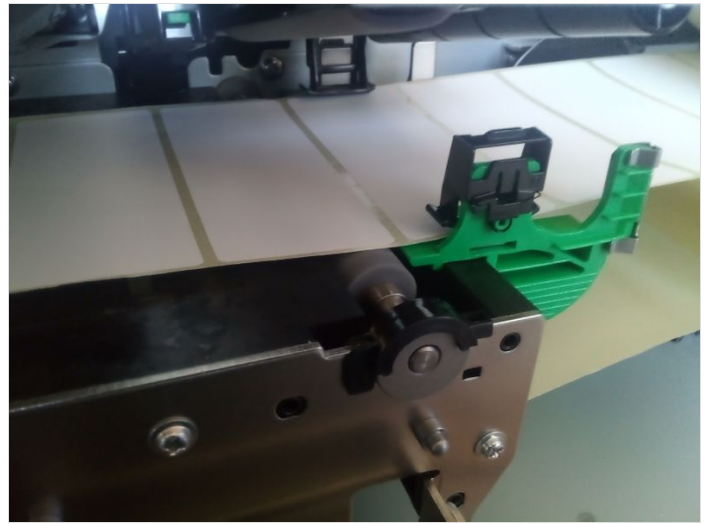
## Step 4 - Setting Rewinder

Ensure the switch is set to REWINDER



## Step 5 - Label Guides

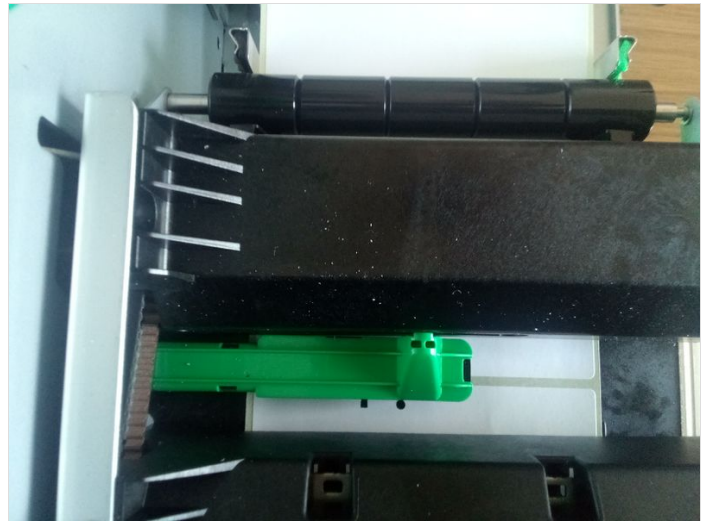
With the Printhead open ensure that the labels are under the small black sprung guides. Slide the green guide to the width of the label.



---

## Step 6 - Sensor Position

Ensure that the sensor head is in the middle of the label



---

## Step 7 - Closing Label Head

When loaded close the Printhead down, lift the front plate up and turn the green knob to LABEL.



---

## Step 8 - Connecting printer to PC

For easy setup use a USB cable (Alternatively everything can be done via the network web interface)

- 1) Connect a USB cable to the PC
- 2) Connect a Network cable to a live DHCP network to obtain an IP address.
- 3) Download and install the BCP setup software: [https://www.toshibatec.com/download\\_overseas/printer/setting\\_tool/BCP\\_Series/](https://www.toshibatec.com/download_overseas/printer/setting_tool/BCP_Series/) [1]

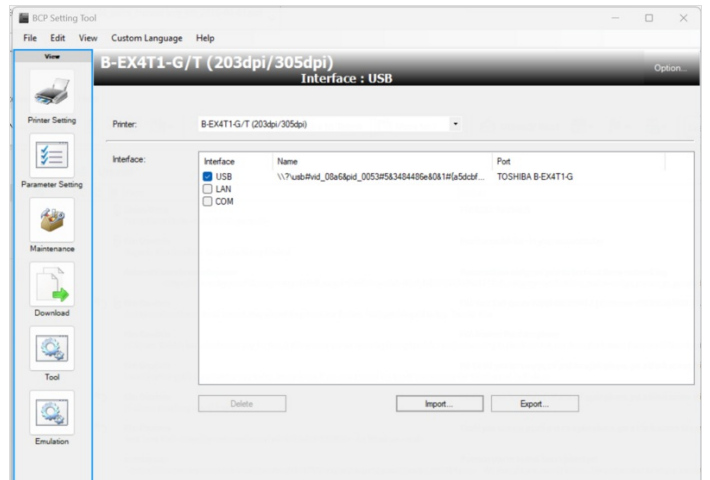
## Step 9 - Initial Power up

If the labels have been fitted properly on power up the calibration process will eject several labels.  
Take a note of the IP address given to the printer on the front panel.



## Step 10 - Using BCP to setup the printer

When you start BCP you should see as picture  
Select USB if not Selected



# Step 11 - Change Settings

Press the Emulation Button and take the top option "Zmode System Parameter Settings"

Then Make the changes

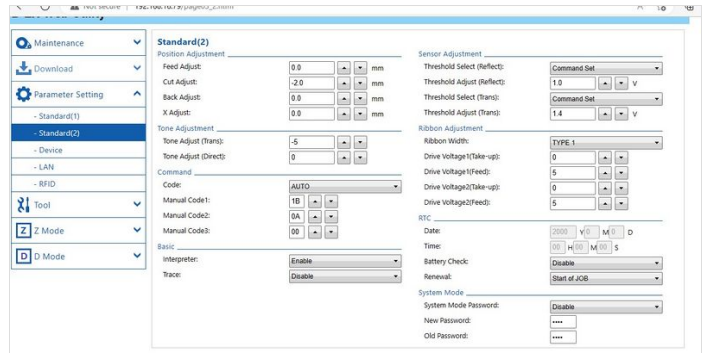
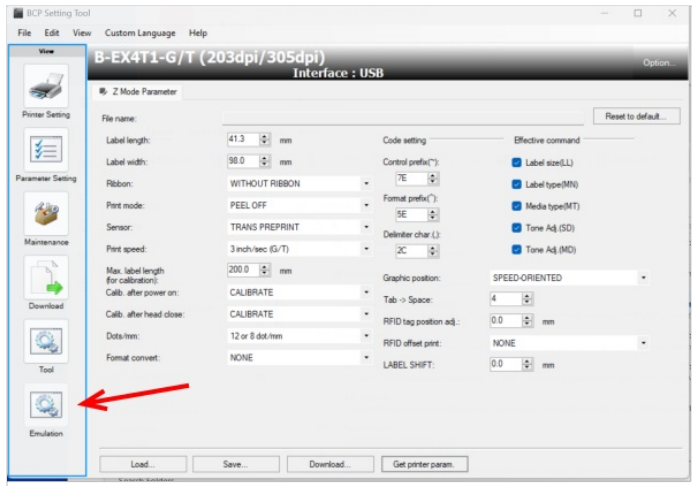
- Label Length **38mm** (after calibration this will be reset to 41.3)
- Label Width **98mm**
- Ribbon **WITHOUT RIBBON**
- Print mode **PEEL OFF**
- Sensor **TRANS PREPRINT**
- Max Label Length (for calibration) **200mm** (this just saves on labels)

Press the **DOWNLOAD** button and check that there are no errors.

Now on the Toshiba side:

- Select Parameter Settings
- Select Standard 2 (General 2 on BCP TOOL)
- Adjust Cut Adjust to -2.0
- Press the submit button

The screen shows the Web version. The adjustment brings the label forward out of the printer to allow collection by the Picking Arm.



# Step 12 - Power printer off and On

...This is often necessary to make sure the printer returns in emulation mode properly

# Step 13 - Testing

- 1) Pressing "Feed" should push out another label regardless.
- 2) Send a label to the printer via the network (or via the Test - Send file within BCP).
- 3) Send more than one file and make sure that each time you remove a label from the output the next one is presented.



## Step 14 - Set the IP Address for the Customers network

1. Within BCP choose "Parameter Settings"
2. Select the LAN tab
3. Enable TCP/IP
4. Enable Wired LAN
5. Set IP Address and Sub Net Mask
6. Press the Set Parameter at the bottom.

