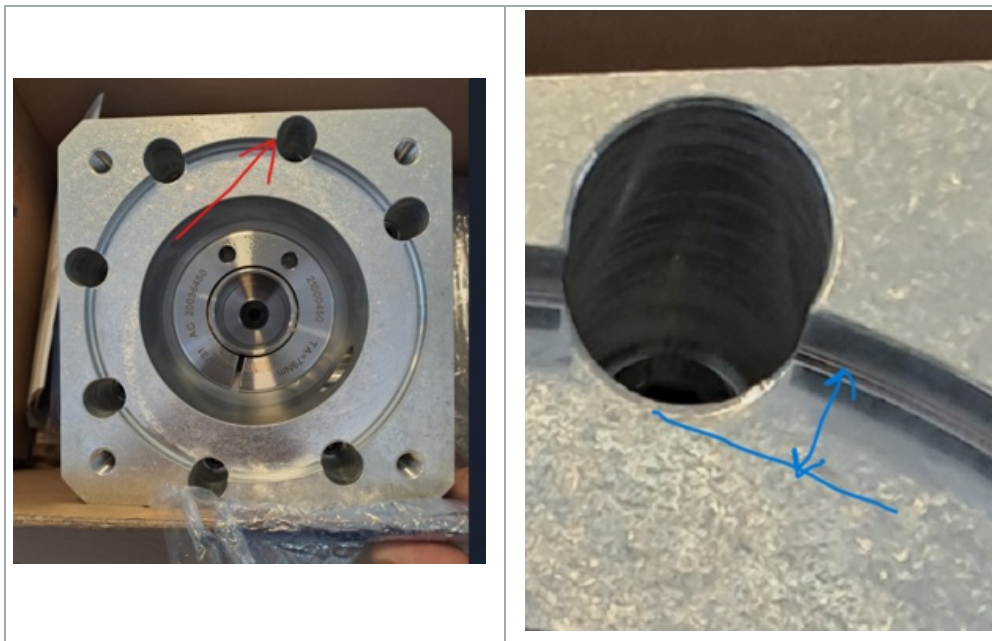


Technical Bulletin - R Axis Motor Swarf Ingress Point

Issue with Swarf Ingress Point on R Axis on Beckhoff Motor / Wittenstein Gearbox Combination

Contents

- Problem
- Maintenance Requirement
- Solution
- Comments



Problem

Whilst carrying out a service on ZX5 it was found that the gearbox / motor coupling area was running in compacted swarf. The end cap was there to stop ingress that way but a gap was found in the top where the 2 parts meet. This allows swarf to enter directly into the housing as all of the routing on the multi is done in this area and it just drops into the hole. This needs to be cleaned and the hole sealed as this could cause damage to the housing / motor / gearbox units.

Maintenance Requirement

- Remove Side Bung
- Blow out via bung hole and entry hole while manually rotating

Solution

- Push in malleable sealant