



TB0452 ZD620 Zebra Printer Setup

This document outlines the setup of the new ZD620 printers to replace the older Zebra 420d printers that are obsolete. Also Applies to ZD420 and ZD421 printers

 Difficulty Easy

 Duration 10 minute(s)

Contents

Items

Step 1 - Auto Power - Power Recovery Mode

Step 2 - Power On

Step 3 - Installing the Peel-Off Module

Step 4 - Load labels

Step 5 - Print a configuration label

Step 6 - Type IP Address in Browser

Step 7 - General Setup

Step 8 - Calibration

Step 9 - Media Setup

Step 10 - Extra checks

Step 11 - Network Settings


Step 12 - Submit + Reset

Step 13 - Width Calibration

Step 14 - Check Firmware is up to date

Comments

Items

 C0001209 Zebra ZD620D Printer

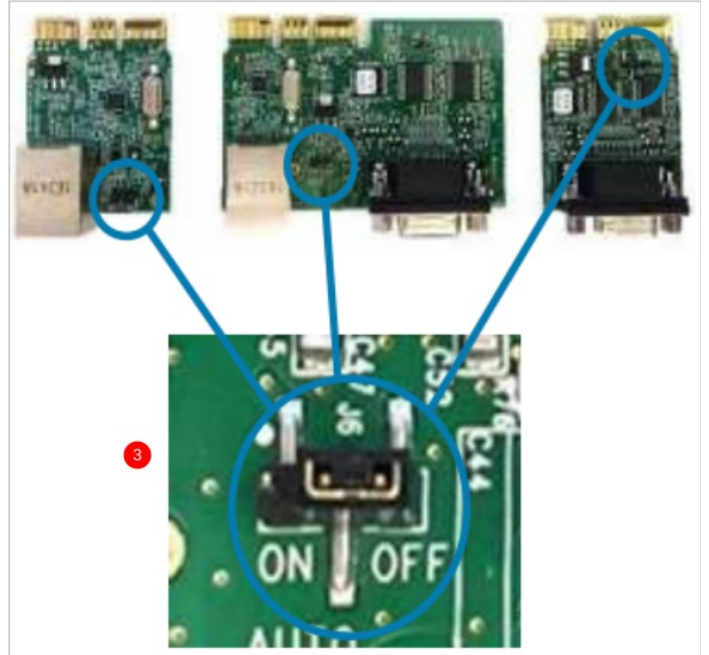
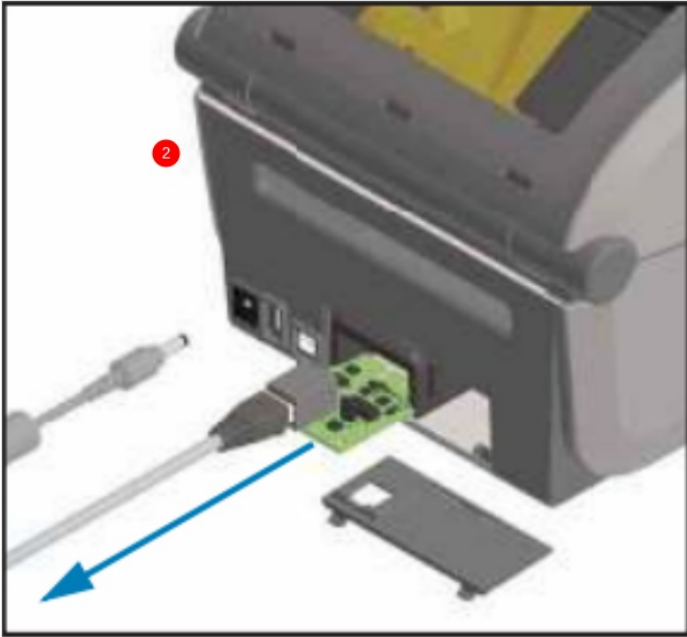
 C0001216 Peel Off Module for ZD620

Step 1 - Auto Power - Power Recovery Mode

One difference between the GX420d and the ZD620d is the lack of a dedicated power switch. The newer ZD620d opts for a power button that must be pressed in order to turn on the printer after power is supplied. As our machines are fully un-powered after a machine is closed down it causes the operator to intervene and manually turn on the printer after power up.

Ideally the Zebra ZD620d has an **Power Recovery Mode** that acts as a permanent switch in case of power failure. We can use this on the machines to allow the printer to turn on upon power up.

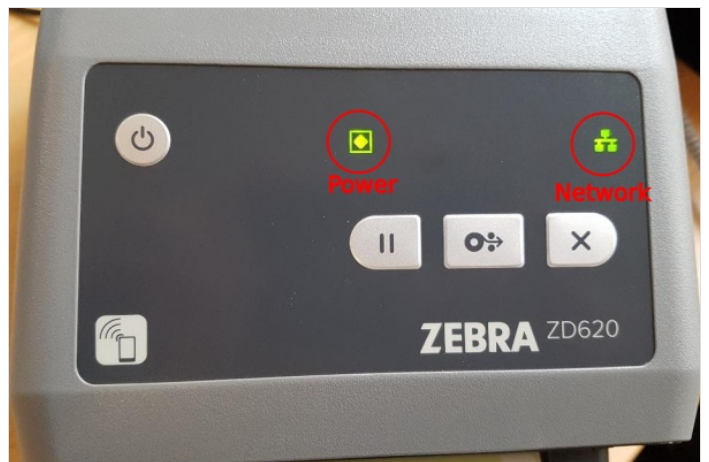
1. Disconnect from power.
2. Remove module door and use Ethernet cable to remove (plug in and pull).
3. Move the switch that is annotated AUTO to the ON position.
4. Reinstall the module.
5. Reconnect power, this should now turn on.



Step 2 - Power On

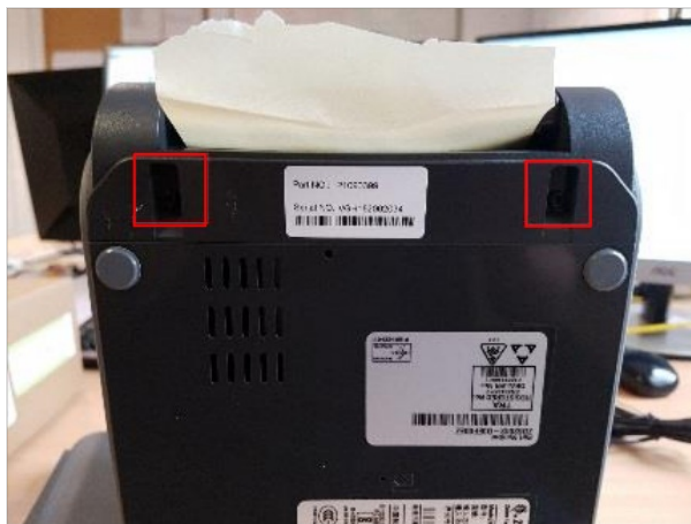
Plug in power and Ethernet cable connected to network to the printer. As the printer boots up there will be a red light displayed on the front. After around 30 seconds this will turn green as the printer completes boot up.

i Also check the Network Light. If this is orange or red there is a connection issue between the printer and the network



Step 3 - Installing the Peel-Off Module

Underneath the printer will be two screws that hold the front label dispenser in place. Undo these using the tool provided in the peel off module box. When these are undone, slide the dispenser downwards to release. When this is off, slide the peel off module onto the printer. Reattach the screws and tighten




Step 4 - Load labels

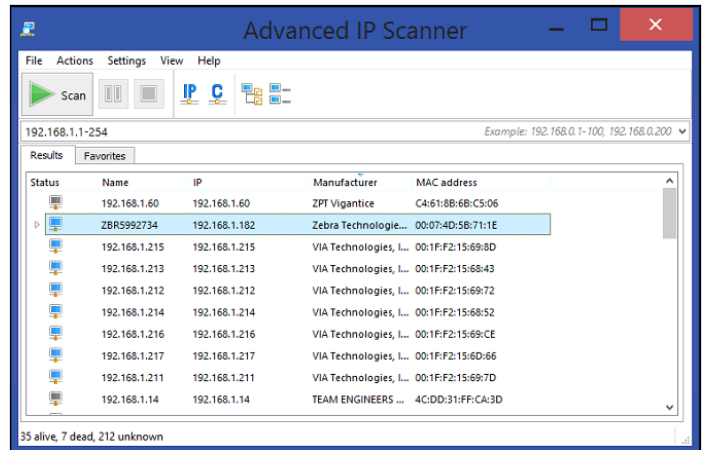
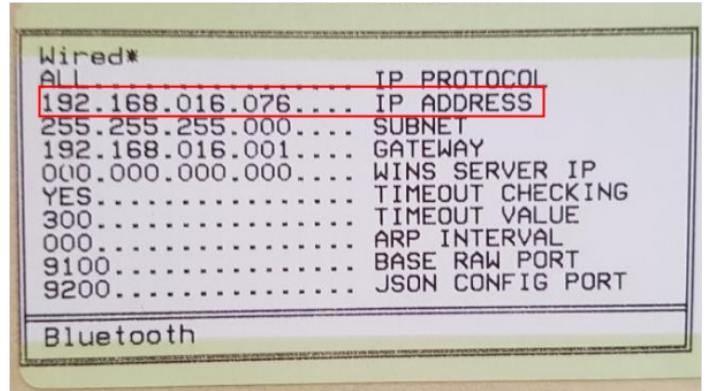
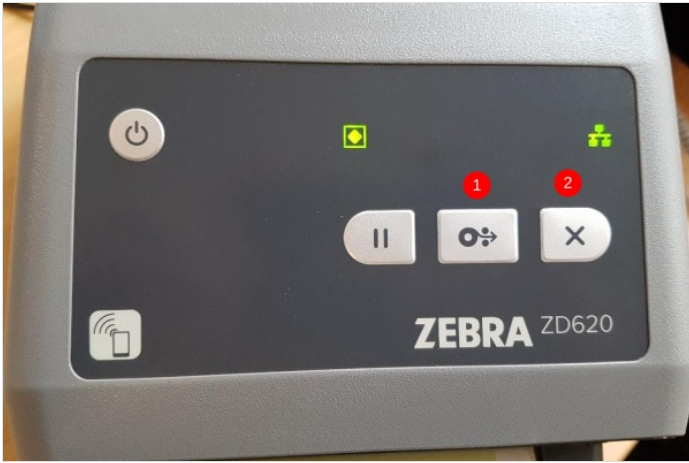
Using the latches on the sides, open the printer and place in a label reel as shown. Open the peel off module using the yellow latch on the front. Thread the labels through the module and tuck labels under latches by the wheel. Check labels are parallel to the printer, close and shut peel off module.



Step 5 - Print a configuration label


Hold down the **dispenser** and **cancel** buttons (1 and 2) for two seconds. This will printout labels with various parameters on them, look for the label with **IP Address** as shown.

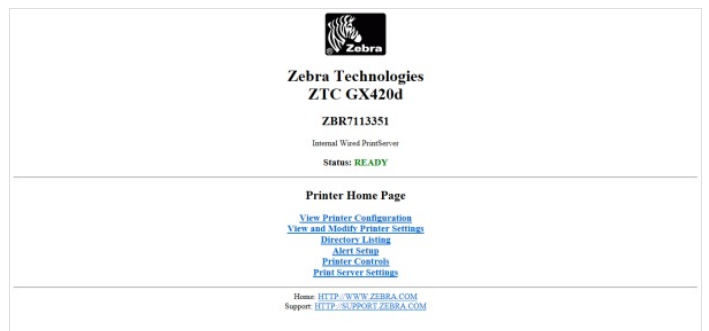
 You can also use the advanced IP address scanner to do this! just be careful to access the correct printer if the customer has more than one.



Step 6 - Type IP Address in Browser

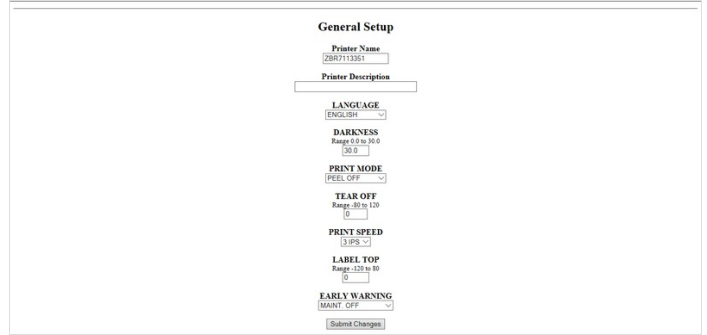
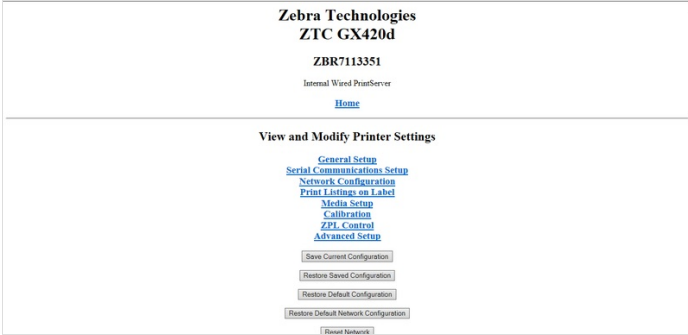
Open the most available browser on the network and type the IP address gathered in the **search bar**. This should open the Zebra Web Home Page.

 If you type the IP address into the browser and get the Bing search engine place **http://** before the IP address.



Step 7 - General Setup

1. From the home page press on **View and Modify Printer Settings**.
2. You maybe prompted for a password type: 1234
3. Go to **General Setup**
4. Put the parameter **Darkness** to 30
5. Put the parameter **Print Mode** to **Peel Off**
6. **Submit Changes**



Step 8 - Calibration

Added March 2023 :

Please check Black mark and Label Gap - Moveable Sensor is near middle of label are and is not pushed to one side.

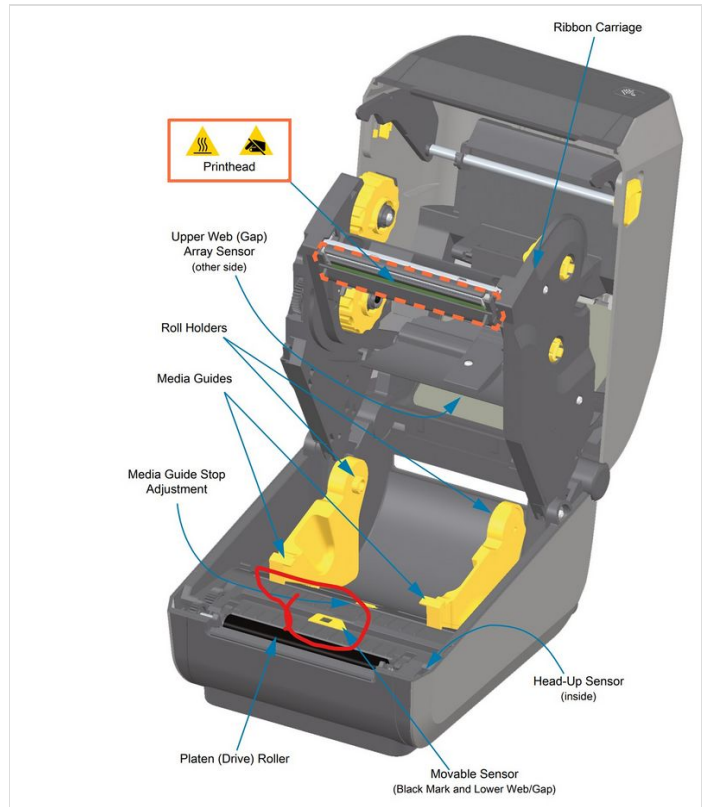
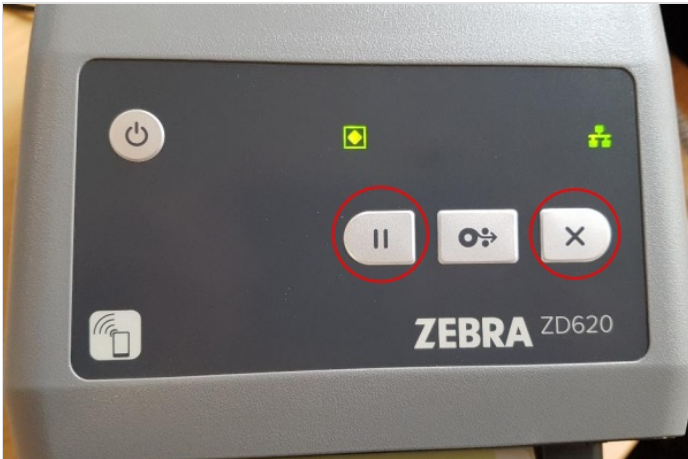
Manual Calibration:

Press and hold Pause and Cancel buttons for 2 seconds then let go.

This will calibrate the label length

Automatic calibration:

1. Go to **Calibration**
2. Change the parameter **Power up** to **Calibration**.
3. Change the parameter **Head Close** to **Feed**.
4. **Submit Changes**.



Zebra Technologies ZTC ZD420-203dpi ZPL

D2J212403365

Internal Wired PrintServer

[Home](#)

Calibration

MEDIA POWER UP

CALIBRATION ▾

HEAD CLOSE

FEED ▾

Web Sensor

Range 0 to 100

Media Sensor

Range 0 to 100

Mark Sensor


Range 0 to 100

Mark Media Sensor

Range 0 to 100

Step 9 - Media Setup

1. Go to **Media Setup**
2. Change the parameter **Print Width** to **800**.
3. **Submit Changes**.
4. Check Media Type is NON-CONT

 Some printers now default to Continuous and not non-continuous . CHECK

Zebra Technologies ZTC GX420d

ZBR7113351

Internal Wired PrintServer

[Home](#)

Media Setup

MEDIA TYPE

NON-CONTINUOUS ▾

SENSOR TYPE

WEB ...

PRINT WIDTH

Range 2 to 312

MAXIMUM LENGTH

Range 0 to 300

Step 10 - Extra checks

1. Backfeed being set to Off rather than Default
2. Tear off position being set to 0
3. Max label length being set to 300, rather than the Max 7967

Step 11 - Network Settings

This should always be done last as changing the IP address to outside of the local range will make the printer settings inaccessible.

1. Go to **Network Settings**.
2. Then **TCP/IP Settings**.
3. Input the desired **IP Address** of the printer.
4. Change **IP Protocol** to **Permanent**.
5. **Submit Changes**.

Setting	Internal Wired
IP ADDRESS	192.168.0.16
IP PROTOCOL	PERMANENT
SUBNET MASK	255.255.255.0
DEFAULT GATEWAY	192.168.0.1
WINS SERVER IP	0.0.0.0
TIMOUT CHECKING	YES
TIMOUT VALUE	300
ARP INTERVAL	0
BASE RAW PORT	9100
CLIENT ID ENABLED	OFF
CLIENT ID TYPE	MAC ADDRESS
CLIENT ID PREFIX	

...The IP address of the printer is determined by the customer's address range. If you are replacing a printer on-site, you need to set the IP to the same as the old printer. You can find this in params.mul - 'printeripaddress='

Step 12 - Submit + Reset

1. Go to **View and Modify Computer Settings**.
2. When done with setup click **Save Current Configuration**.
3. Then click **Reset Network**. The IP address is now fully transferred to the one input on step 10. If already on site test this by putting the new IP address into the browser search bar.

...Very Important to remember to **SAVE CONFIGURATION**

View and Modify Printer Settings

- General Setup
- Serial Communications Setup
- Network Configuration
- Print Listings on Label
- Media Setup
- Calibration
- ZPL Control
- Advanced Setup

Save Current Configuration

Restore Saved Configuration

Restore Default Configuration

Restore Default Network Configuration

Reset Network

Step 13 - Width Calibration

To calibrate the label width, follow the instructions in this video

1. Hold pause until status light only on
2. Press feed once to move to orange pause light
3. Press pause, width calibration labels will start printing
4. Press Feed when correct width is printed (100mm)

Step 14 - Check Firmware is up to date

If firmware is not up to date, follow this link