

# TB0428 Phase Detection Relay

The phase detection relay shuts the power down to the machine if one phase is missing, or if the voltage drops or exceeds a set threshold.

## Contents

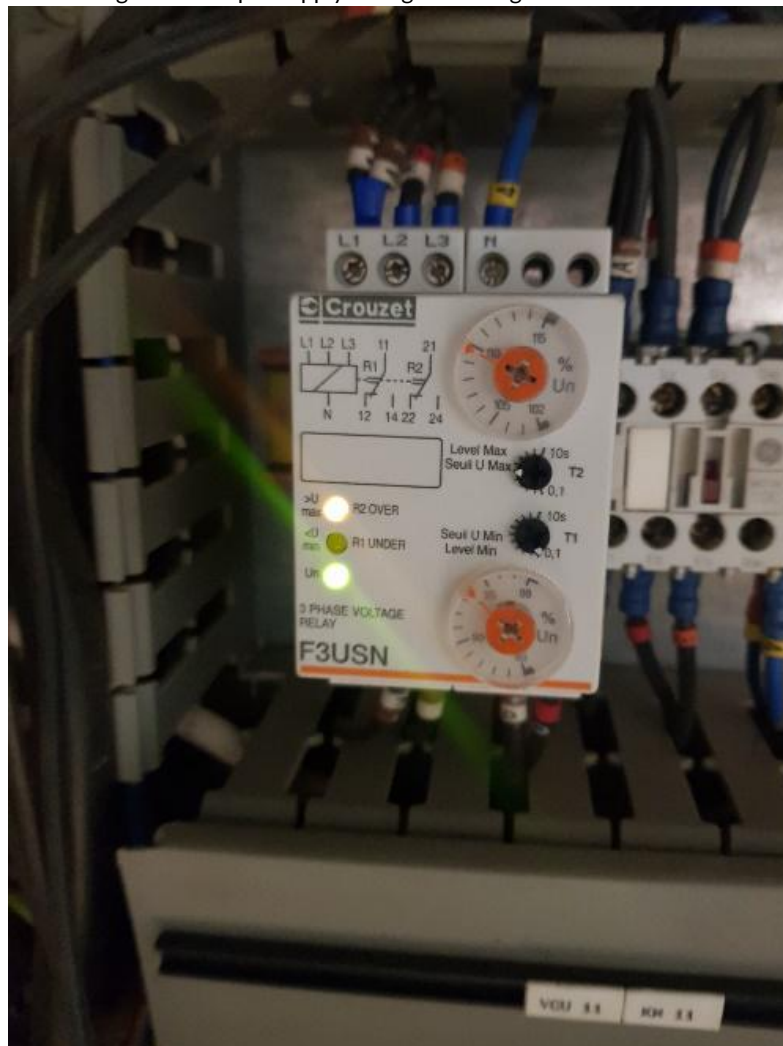
What is a Phase Detection Relay?

Comments

## What is a Phase Detection Relay?

The lamps labelled ">Umax" and "<Umin" indicate if the voltage supply exceeds the percentage set on the dials. The dials are normally set to 90% and 110%.

In the photo, the >Umax lamp is on showing that the input supply voltage is too high.



It will not do any damage to the machine if the threshold needs to be increased to min 85% or max 115% if a customer has a varying supply

If this does not work, competent person can measure the voltage on each phase to see where the issue is.

The dials T1 and T2 set the internal timer to trigger power off after a certain amount of time in fault condition, this should be between 0.1 to 0.5s

