


TB0428 Connecting To Yaskawa with Silex USB

Connecting To Yaskawa with Silex USB

 Difficulty **Medium**

 Duration **10 minute(s)**

Contents

Introduction

What is the Silex DS-510?

Step 1 - Connect to mains

Step 2 - Install SX Virtual Link

Step 3 - Run software

Step 4 - Connect

Step 5 - Run Yaskawa DriveWizard

Step 6 - Find COM Port

Step 7 - Enter into the communications setup

Step 8 - Click on Modify link

Step 9 - Enter COM port

Step 10 - Connect to drive

Comments

Introduction

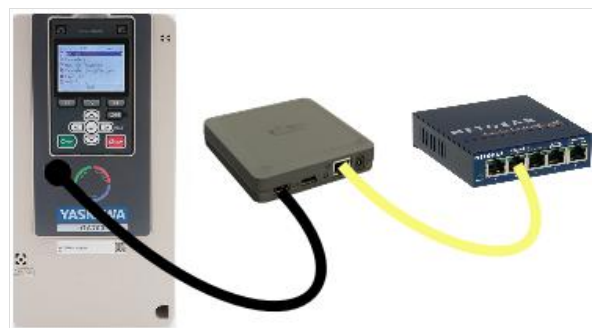
What is the Silex DS-510?

The Silex unit is a USB server, allowing a PC to have a USB port anywhere over an ethernet network. This is useful to connect the PC to a Yaskawa inverter when they are located in different cabinets.

The software sets up a virtual USB port which can then be used to run the Yaskawa DriveWorks software.

Step 1 - Connect to mains

Connect the Silex to mains, onto the network via RJ45 and via USB to the Yaskawa



Step 2 - Install SX Virtual Link

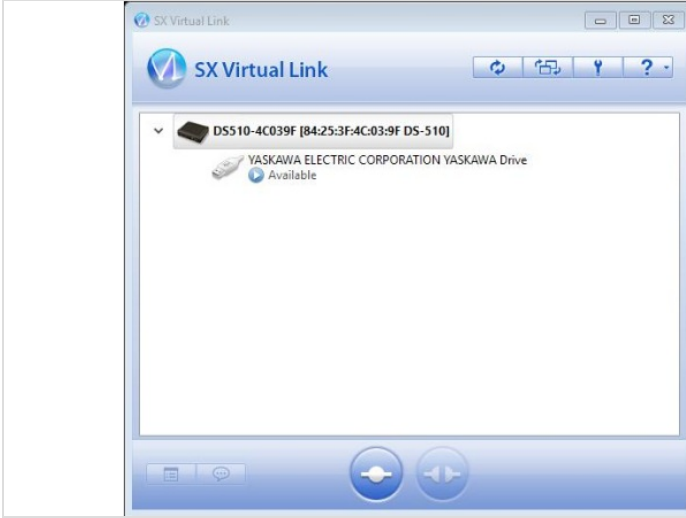
Install SX Virtual Link software on your PC, download [here](#). Keep all defaults during install

Step 3 - Run software

Power on and run the software

Step 4 - Connect

Double click the Yaskawa or click on the button at the bottom to connect



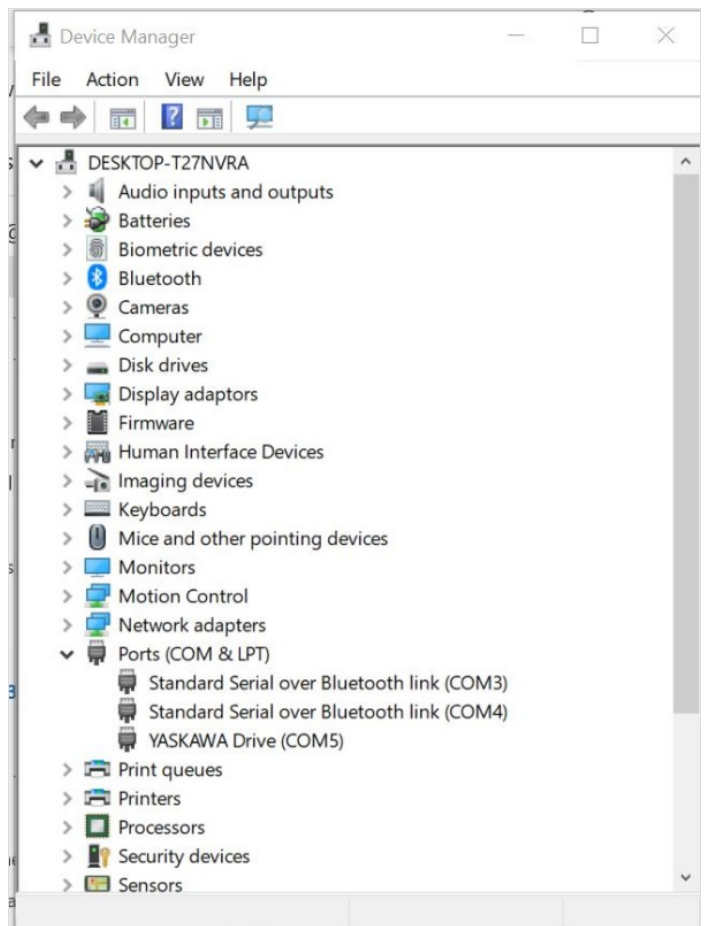
Step 5 - Run Yaskawa DriveWizard

Run Yaskawa DriveWizard (installation file is in Dropbox (Stuga Machinery Ltd)\service\3rd Party Manuals\Inverters\Yaskawa)



Step 6 - Find COM Port

Find the COM Port that has been assigned to the Yaskawa by looking in Windows Device Manager (type in your search box, or through control panel)



Step 7 - Enter into the communications setup

Enter this into the communications setup on DriveWizard



Step 8 - Click on Modify link

Click on Modify link



Step 9 - Enter COM port

Enter the COM port in the drop down box



Step 10 - Connect to drive

Click connect to drive

