


Stuertz VSM 30.20-P Welder Installation

Step by step guide for installing Sturtz Welder

 Difficulty **Medium**

 Duration **4-6 hour(s)**

Contents

- Step 1 - Lift uprights into position
- Step 2 - Run in belts and chain
- Step 3 - Tension chain and belts
- Step 4 - Fit light curtain arms
- Step 5 - Fit guarding
- Step 6 - Connect console
- Step 7 - Connect power and air
- Step 8 - Align safety light curtain
- Step 9 - Fit Beacon
- Step 10 - Lift bottom heads and remove transportation stop bolts
- Comments

Step 1 - Lift uprights into position

Lift uprights into positions and fix with 3 x bolts each side on each upright. Fit 2 x cap heads on each rail each side



Step 2 - Run in belts and chain

Run belts and chains through onto pulleys, tensioner may need to be slackened off to fit the brackets through.

Lift the top head to be able to lower the chain and belt brackets at the rear of the uprights.

Fix brackets to upright.

Always fix chain bracket first. then belt bracket.



Always use fully threaded bolts without a shoulder

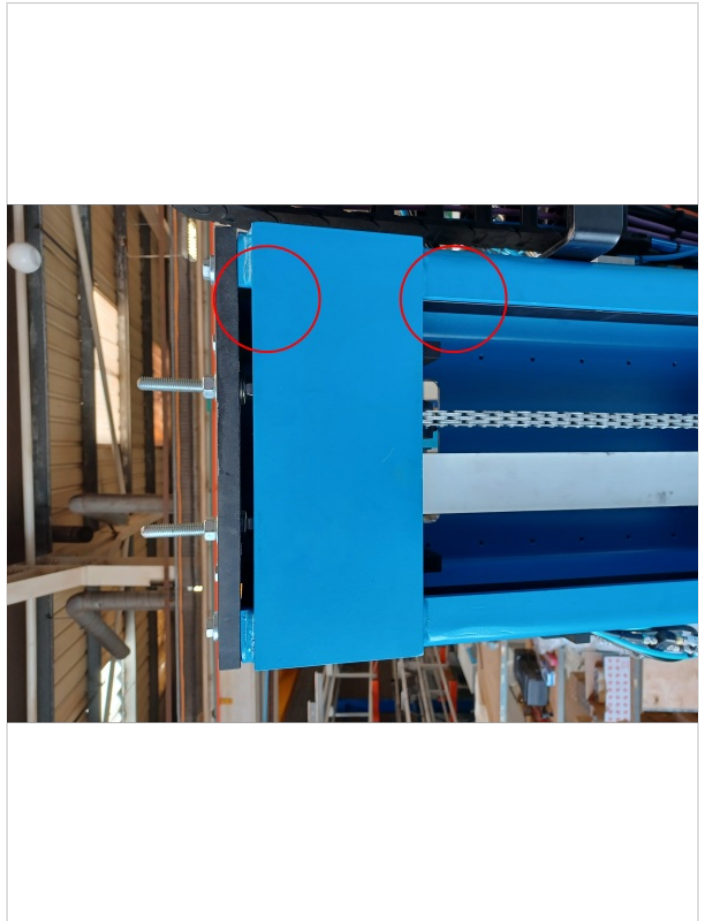






Step 3 - Tension chain and belts

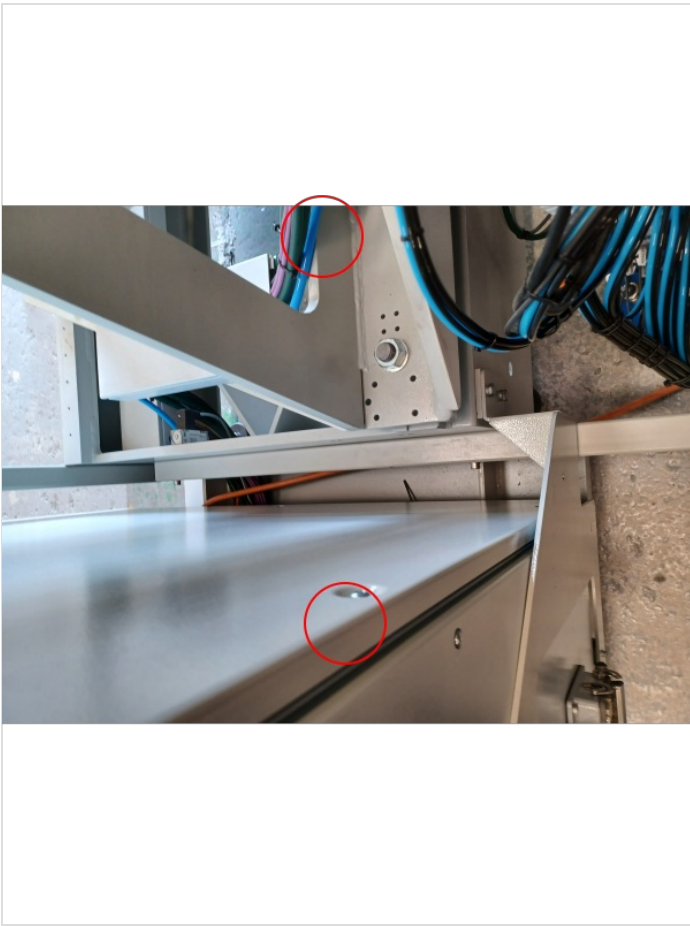
Tension using the threaded bars nuts at the top of the uprights.
Ensure pulley are level.



Step 4 - Fit light curtain arms

Fix in place with 2 x cap head bolts. Cabinet side connect cable to light curtain and clip to arm. Adjust the feet to level the arms.





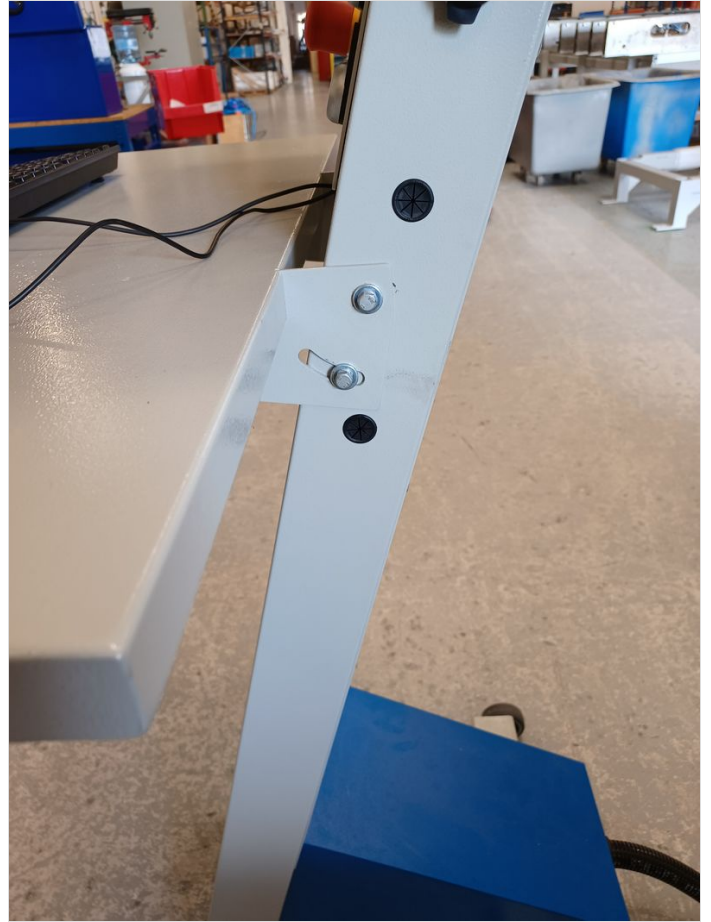
Step 5 - Fit guarding



Step 6 - Connect console

Connect console and network cable.

Also fit keyboard tray and adjust using the fixing bolts each side.



Step 7 - Connect power and air

Step 8 - Align safety light curtain

Step 9 - Fit Beacon

Use M5 bolts and nuts to fit the beacon to the top of the cabinet



Step 10 - Lift bottom heads and remove transportation stop bolts

Once the machine is powered on and ready to move use the referencing process to move the bottom heads away from the stop bolts in the rear of the uprights and then remove them (1 on each upright)

