



Stuertz Infeed - Freeing Roller under Gripper Arm

How to free the roller from under the gripper arm

 Difficulty **Hard**

 Duration **10 minute(s)**

Contents

Introduction

Step 1 - Enter Setup Mode

Step 2 - Ensure the roller is activated Down

Step 3 - In TwinCAT Release the GZ axis Brake

Step 4 - Reset Machine

Step 5 - Ensure the roller is activated Down (again)

Step 6 - Move GZ axis to its maximum

Step 7 - Send Roller Forward

Step 8 - Roller Up

Step 9 - Roller Back

Step 10 - Exit Setup Mode

Comments

Introduction

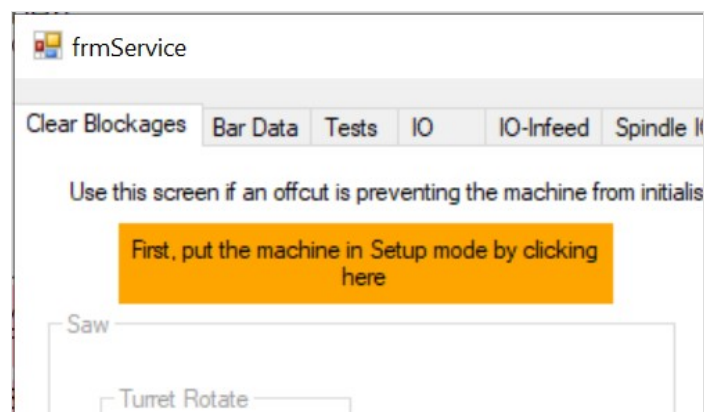
Applies to: A2026-A2030 Autoflow Mk4 with Jetta Locking motors

In certain circumstances, the forward clamp roller arm has stuck itself under the gripper arm. Freeing from this situation requires a set process because the GZ axis motor is braked and probably in an overload condition



...You need to be confident in using TwinCAT on the VM machine to navigate to settings

Step 1 - Enter Setup Mode



Step 2 - Ensure the roller is activated Down

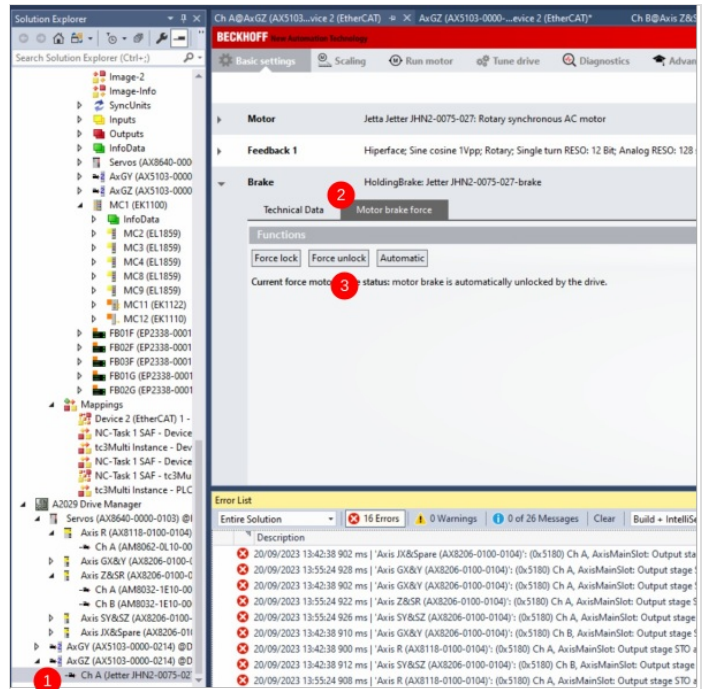
OuA_VorDn = On then Off



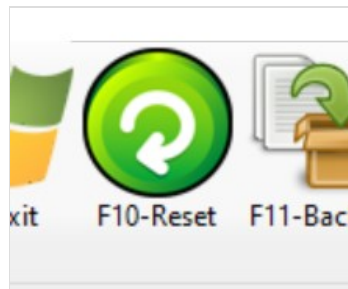
Step 3 - In TwinCAT Release the GZ axis Brake

1. Select the GZ motor in the devices
2. Select Brake and "Motor Brake Force" tab
3. Click "Unlock"

This will release the tension on the roller

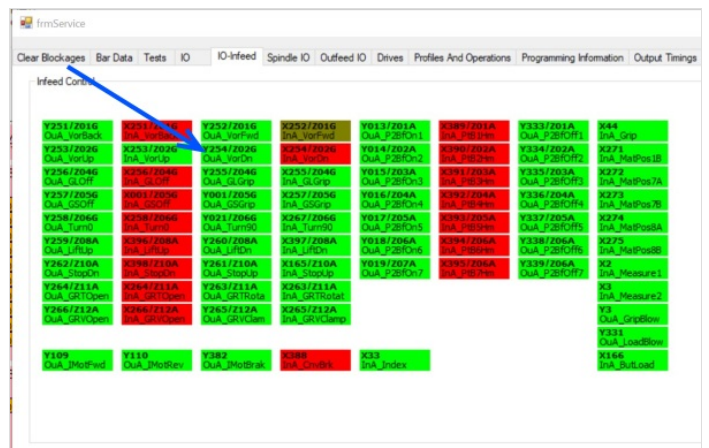


Step 4 - Reset Machine



Step 5 - Ensure the roller is activated Down (again)

OuA_VorDn = On then Off



Step 6 - Move GZ axis to its maximum

1. GZ Maximum is displayed in the box
2. Put this in the move box and press move



Step 7 - Send Roller Forward

OuA_VorFwd = On then Off



Step 8 - Roller Up

OuA_VorUp = On then Off



Step 9 - Roller Back

OuA_VorBack= On then Off



Step 10 - Exit Setup Mode
