


Stowing Stuertz Infeed Table

How to correctly package the Stuertz Infeed table for transportation

 Difficulty **Medium**

 Duration **2 hour(s)**

Contents

Introduction

Step 1 - Ensure the rollers are down

Step 2 - Vertical Roller Clamp

Step 3 - Console Arm

Step 4 - Forward clamp carriage

Step 5 - GY Axis

Step 6 - Horizontal clamp rollers

Step 7 - Gripper carriage metal ties

Step 8 - Gripper carriage

Comments

Introduction

How to ensure the gripper arm and other movements are correctly fixed to prevent damage in transit

Step 1 - Ensure the rollers are down

If there is no power / air on the machine, disconnect Cyl8 black line to release pressure



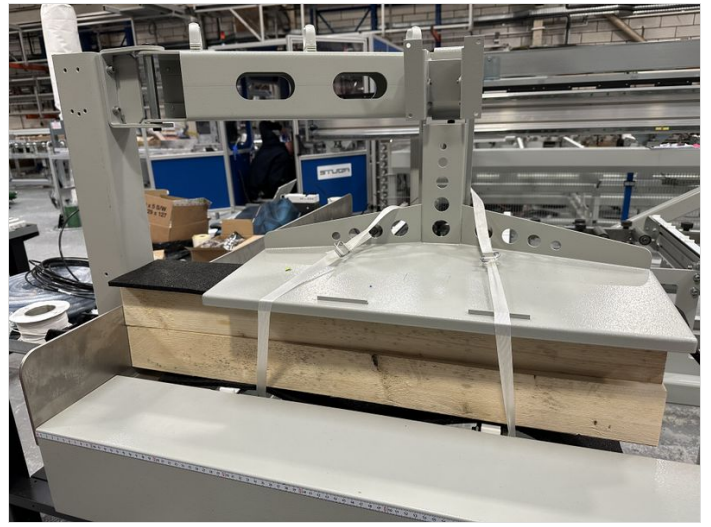
Step 2 - Vertical Roller Clamp

Release any pressure and tie to Roller bed



Step 3 - Console Arm

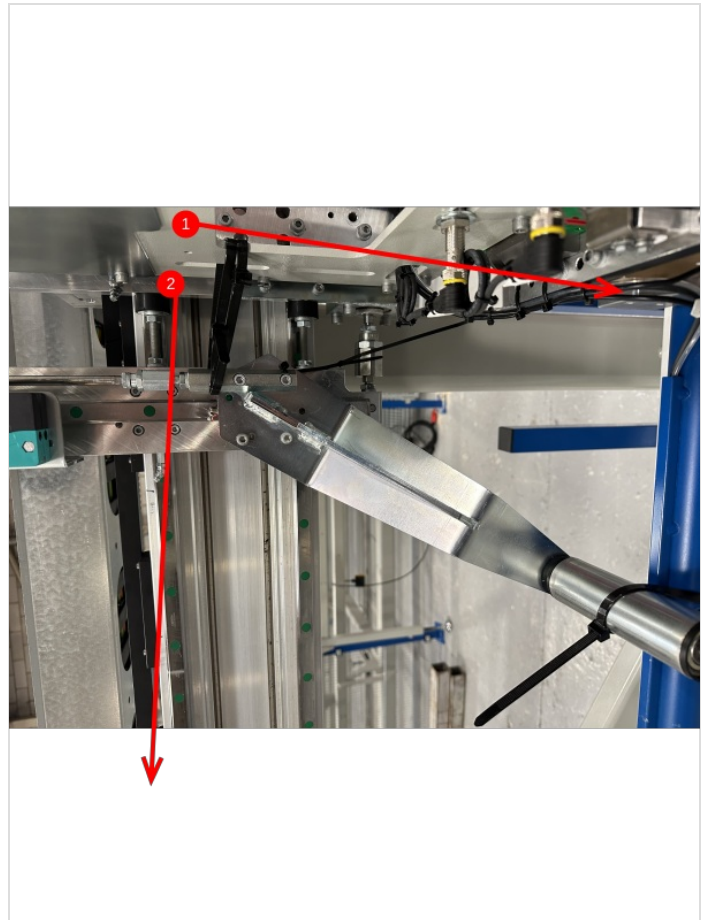
Tie to frame with wooden spacers and cushion with foam



Step 4 - Forward clamp carriage

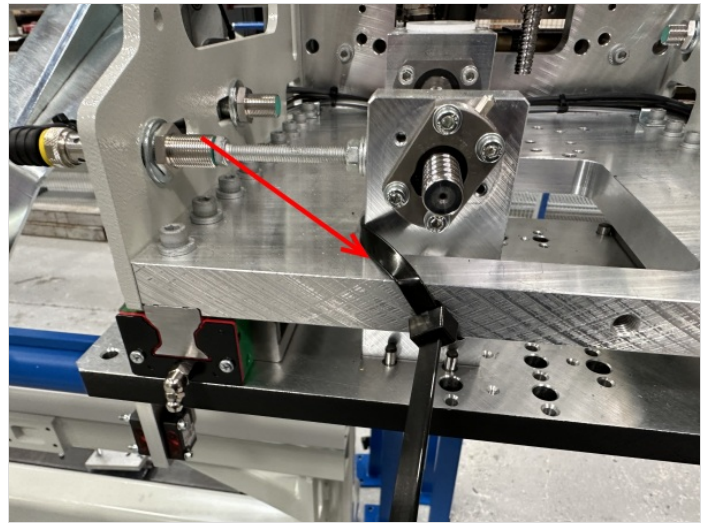
Tie

1. down to gripper arm
2. back to main carriage



Step 5 - GY Axis

Tie together to prevent it moving



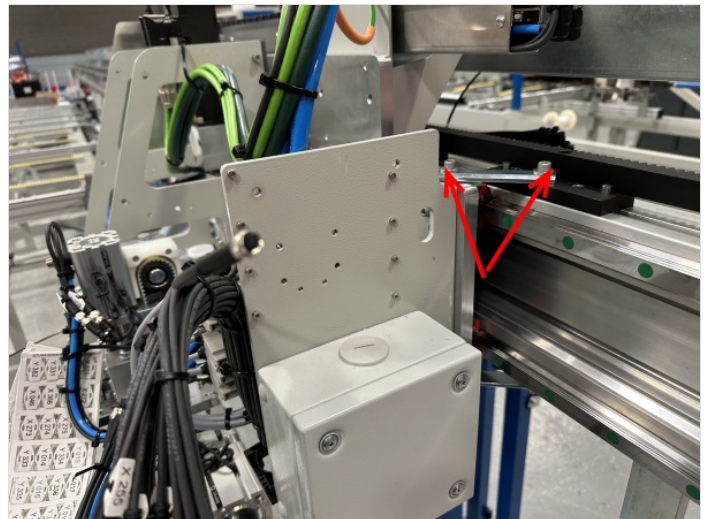
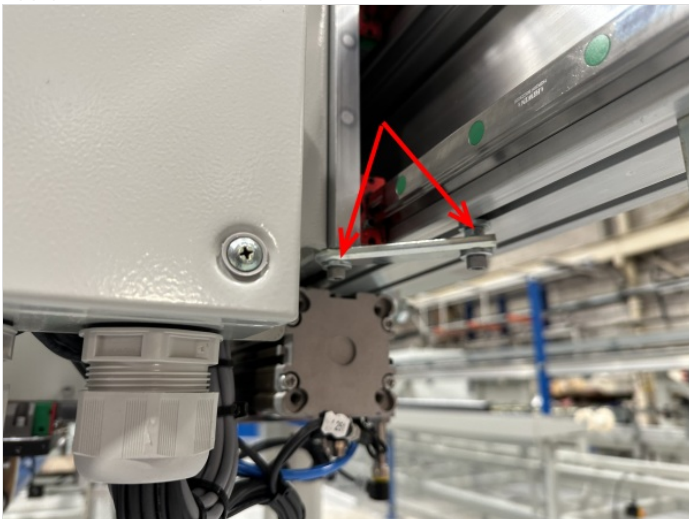
Step 6 - Horizontal clamp rollers

Tie all 7 horizontal clamps closed



Step 7 - Gripper carriage metal ties

Apply the mechanical tie plates (if fitted)



Step 8 - Gripper carriage

Tie the gripper with a wooden spacer to the roller bed

