



Setting Gripper Nose

How to correctly set the gripper nose mechanics

 Difficulty **Medium**

 Duration **20 minute(s)**

Contents

Introduction

Step 1 - Temporary Instructions

Step 2 - Ensure the profile bottoms out on the gripper nose not holder

Comments

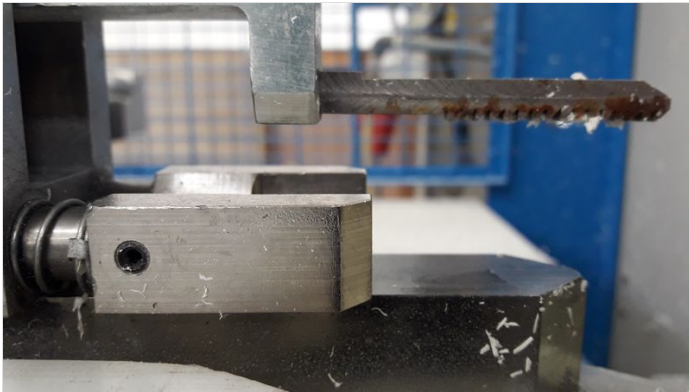
Introduction

It is very important to ensure the gripper nose and heel is correctly set up. This assembly is subject to a lot of wear and tear and maintenance is very important. Incorrect setting or play in this assembly is a major cause of accuracy issues

Step 1 - Temporary Instructions

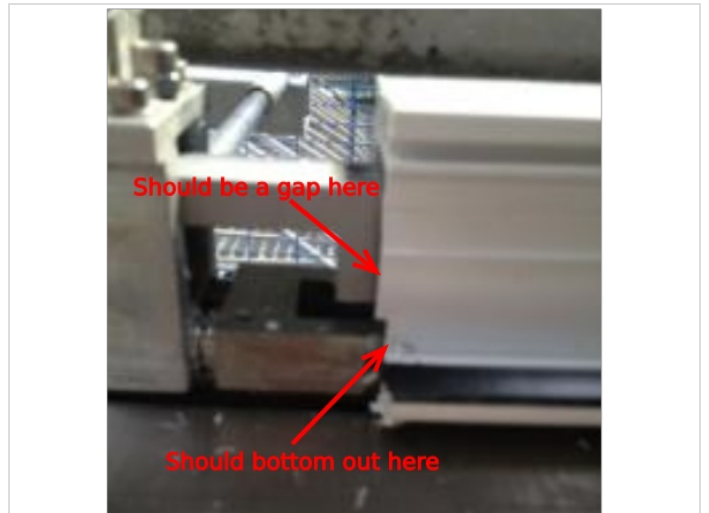
when it is in this position - Fully bottomed make sure the Grip on comes down but doesn't catch the Grip nose.

Notice the Dead stop bolt at bottom is hard up then set grip switch bolt so that the dead stop bolt gap is no more than 1mm when grip switch goes off.



Step 2 - Ensure the profile bottoms out on the gripper nose not holder

See - Mk10 Gripper Setup



.....