


# Recovery of Bar Queue following winMulti Crash

Recovering the bar queue to match the number of bars on transfer table following a crash on winMulti

 Difficulty Very easy

 Duration 2 minute(s)

## Contents

Introduction

Step 1 - Check the bar queue on the saw screen

Step 2 - Open the Bar Edit Screen

Step 3 - Select the Bar Detail Tab

Step 4 - Find the last Uncut Bar and Click "Queue"

Step 5 - Click Yes to confirm you want to create the bar

Step 6 - Double check that the Queue is now correct

Comments

## Introduction

There have been cases of software crashing on the Stuga front end software, but the machine will continue to cut the holes and slots on the bar and eject it to the transfer table.


This creates the situation that the bar is physically finished, but the software has not registered it as finished.

This can lead to confusion for the operator and put the bar queue out of sync, which can lead to wasted profile

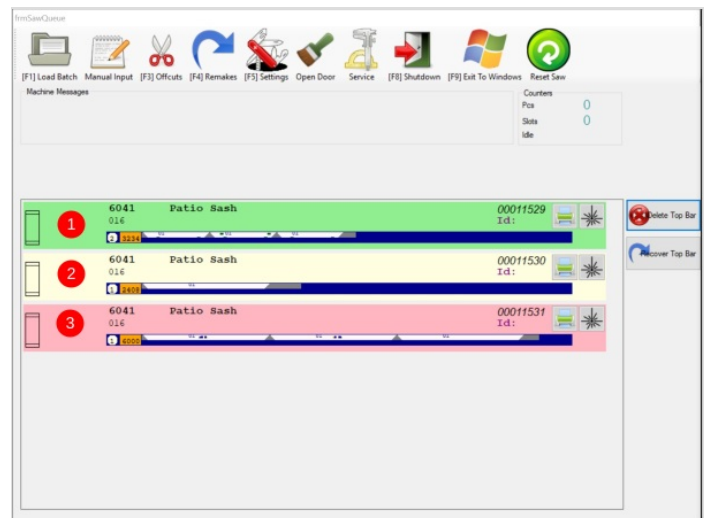
## Step 1 - Check the bar queue on the saw screen

First you need to check out the bar queue to see if it is the same as the actual bars on the transfer table

1. Restart winMulti
2. Count the total number of bars on the saw infeed and transfer table
3. Compare with the number of bars on the saw queue

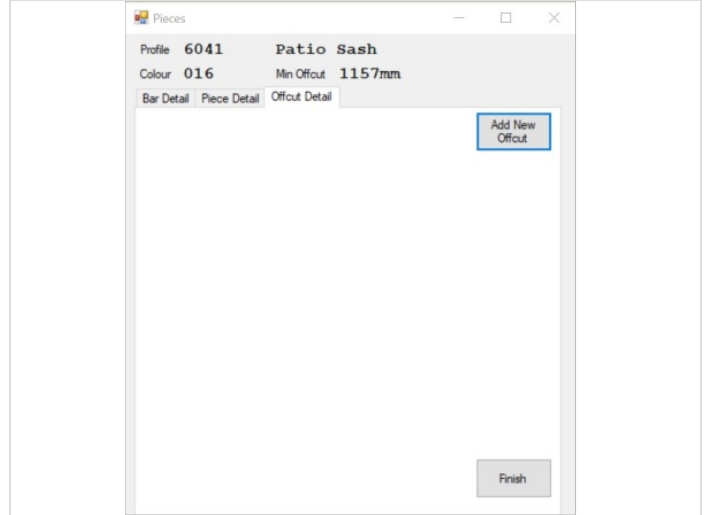
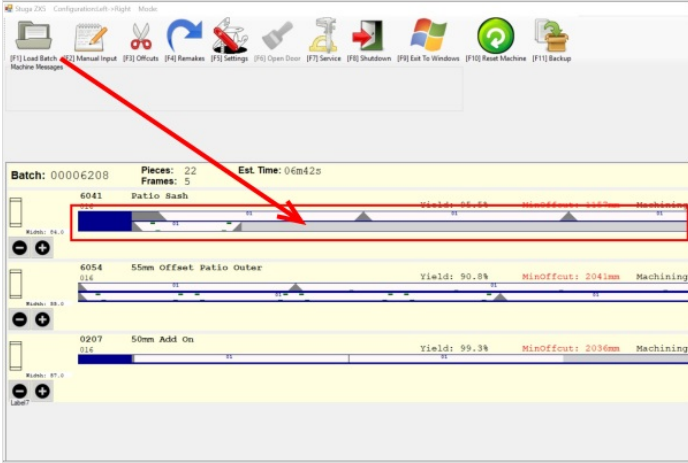
 ...If you have some offcuts on the screen, this can help identify the queue position by looking at the length of the offcut

If there is **one more bar** actually on the table than on the bar queue screen, follow the process below to add the missing bar to the queue.

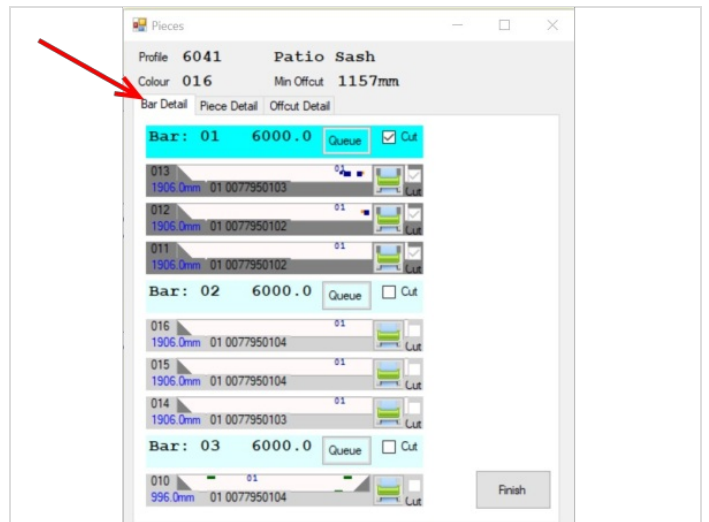


## Step 2 - Open the Bar Edit Screen

On the machining centre side, click anywhere on the top profile in the queue  
This opens the bar edit screen on the "Offcuts" tab



## Step 3 - Select the Bar Detail Tab

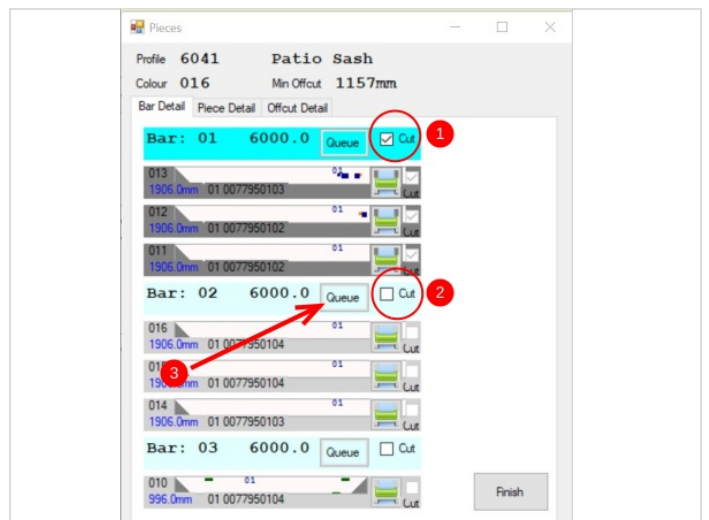


## Step 4 - Find the last Uncut Bar and Click "Queue"

When a bar has been properly registered as "Cut, the tick box will be ticked (as in (1))

The first one that is "Uncut" needs to be queued, so

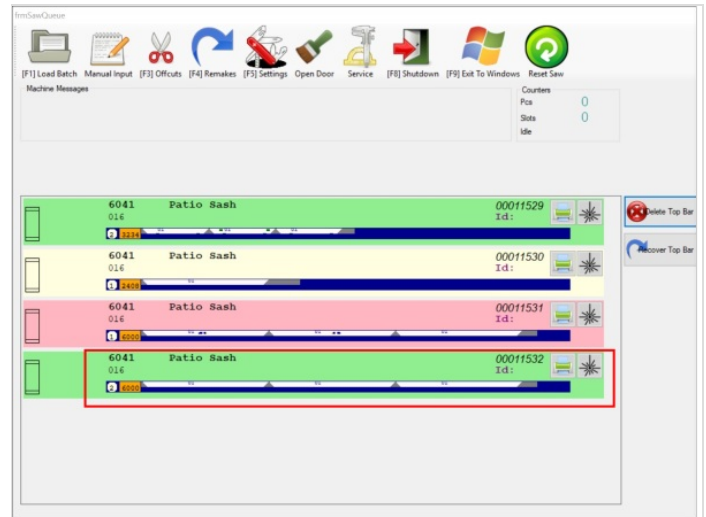
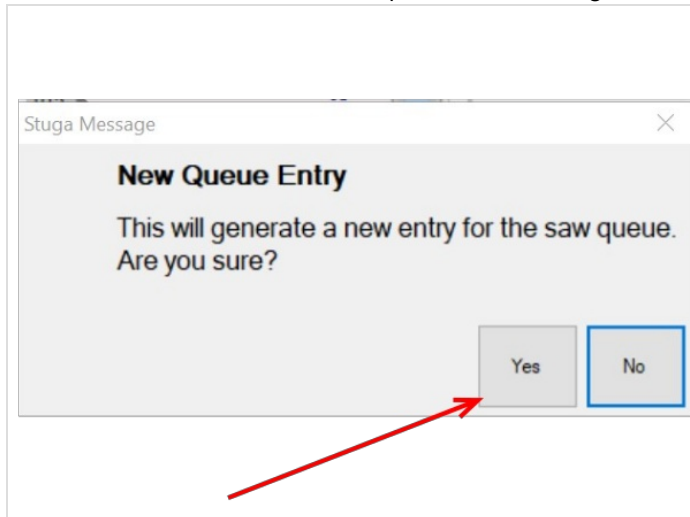
- (2) Click on "Cut"
- (3) Click on the Queue Button



## Step 5 - Click Yes to confirm you want to create the bar

Click Finish

This will create a bar on the saw side queue for the missing bar



## Step 6 - Double check that the Queue is now correct

Same number of bars on the table as on the screen

