


R0015351 Mount monitor to Frame

Instructions to mount monitor to main frame

 Difficulty **Medium**

 Duration **1 hour(s)**

Contents

Introduction

Step 1 - Unless otherwise stated

Step 2 - Fit mounting post to frame

Step 3 - Attach monitor mount arm

Step 4 - Fit Bracket to monitor

Comments

Introduction

Tools Required

Standard spanner set

Standard hex key set

Parts Required

D0015142 monitor mount post

E0001186 Monitor 32"

M0001060 monitor mount

Step 1 - Unless otherwise stated

Use loctite 243 on all fasteners

Use Loctite 572 on all threaded pneumatic connections

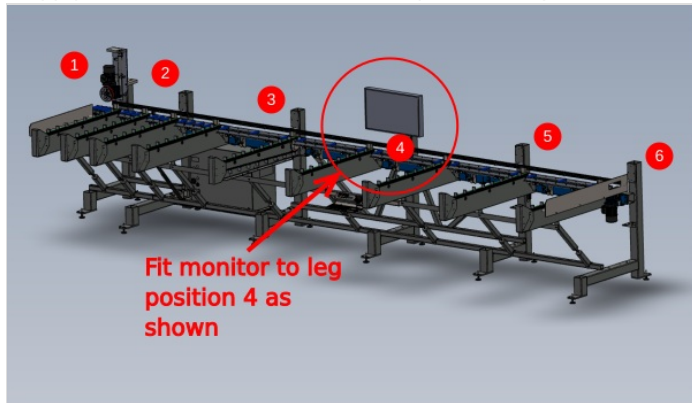
Pen mark all bolts to show finalised

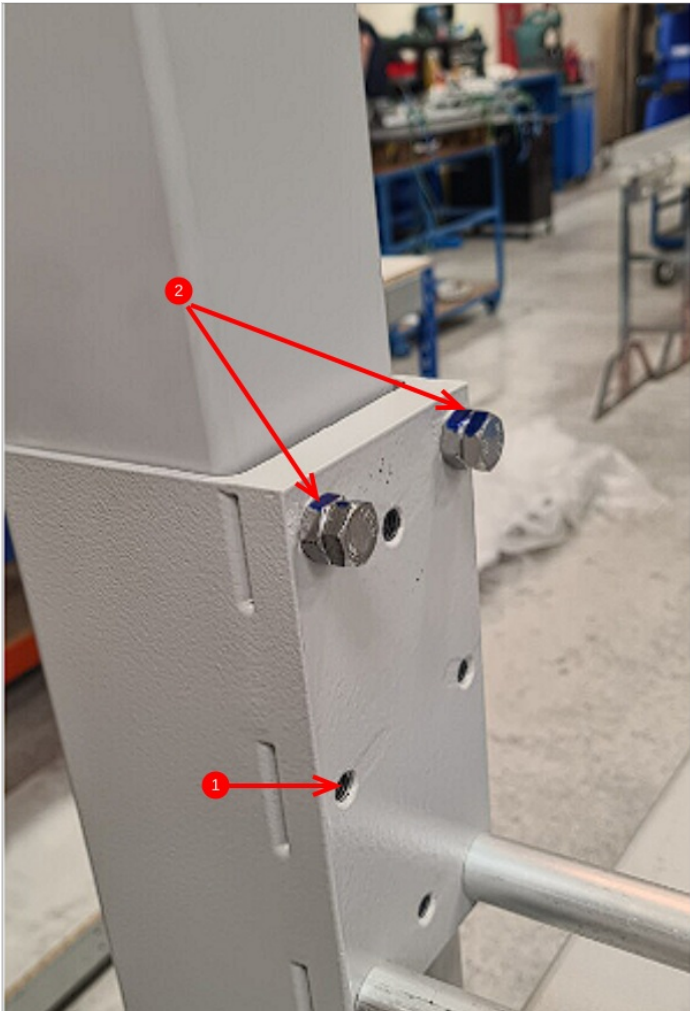


Step 2 - Fit mounting post to frame

1 slide in monitor mount D0015142 into frame until bottom of post is visible through second set of holes (indicated)

2 Apply tension to M10 x 30 set bolts to pin monitor post and lock tension with the M10 nuts







Step 3 - Attach monitor mount arm

Attach Monitor mount as shown using M6 x 20 countersink bolts and lock off inside the post with M6 nyloc nuts



Step 4 - Fit Bracket to monitor

Attach Monitor to Bracket using M4 x 12 socket caps and A form washers

