

R0015348 Fit Flexible Ducting

Assembly details for flexible ducting installation

 Difficulty **Medium**

 Duration **2 hour(s)**

Contents

Introduction

Step 1 - Unless otherwise stated

Step 2 - Pre cut flexible ducting

Step 3 - Connect A from 3 way branch

Step 4 - Connect B from 3 way branch

Step 5 - Connect conveyor

Comments

Introduction

Tools Required

Utility knife
Side cutters
Tape measure
Standard screwdriver set

Parts Required

M0000113 Flexible Ducting 125mm PVC x 10
M0000114 Jubilee Clip 110-140mm x 6
M0000036 ear defender sticker x 1

Step 1 - Unless otherwise stated

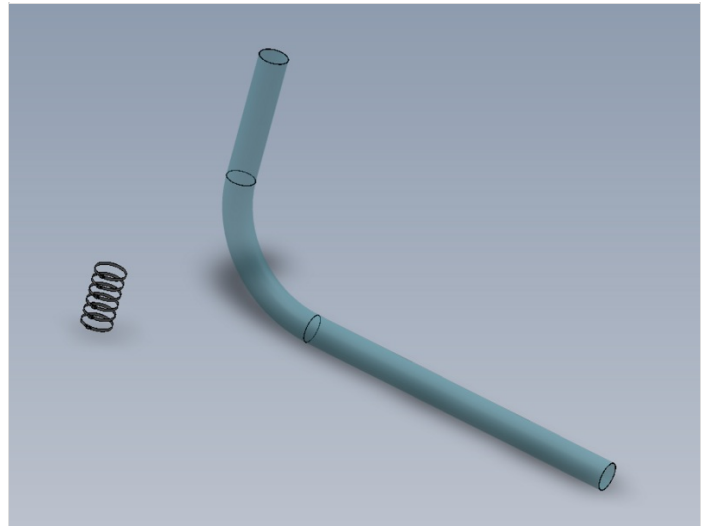
Use Loctite 243 on all fasteners
Use Loctite 572 on all threaded pneumatic connection
Pen mark all fasteners to show finalised



Step 2 - Pre cut flexible ducting

Cut 3 off lengths of flexible ducting to suit machine

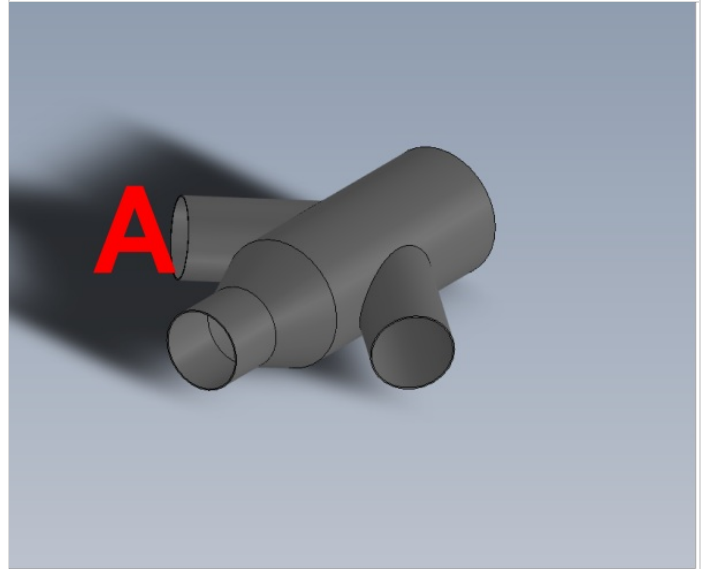
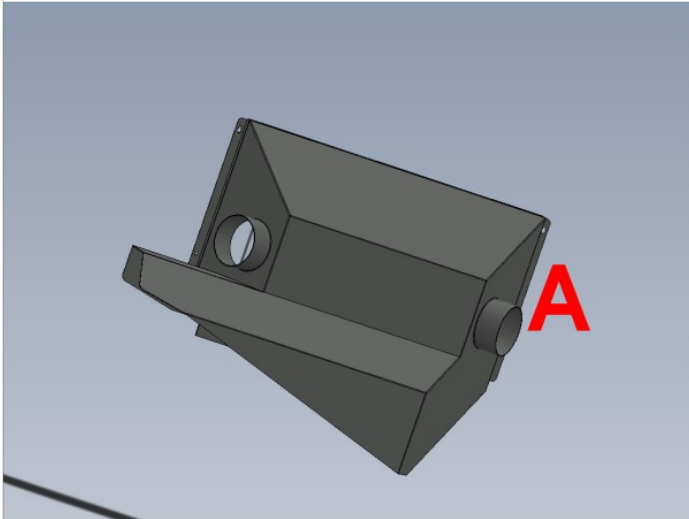
Please provide lengths of 3 sections for cutlist please



Step 3 - Connect A from 3 way branch

Connect from 3 way branch to saw read door point A

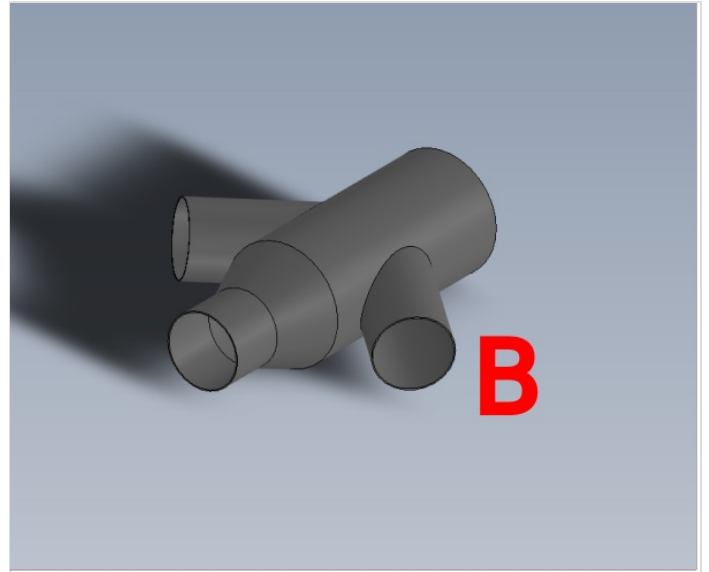
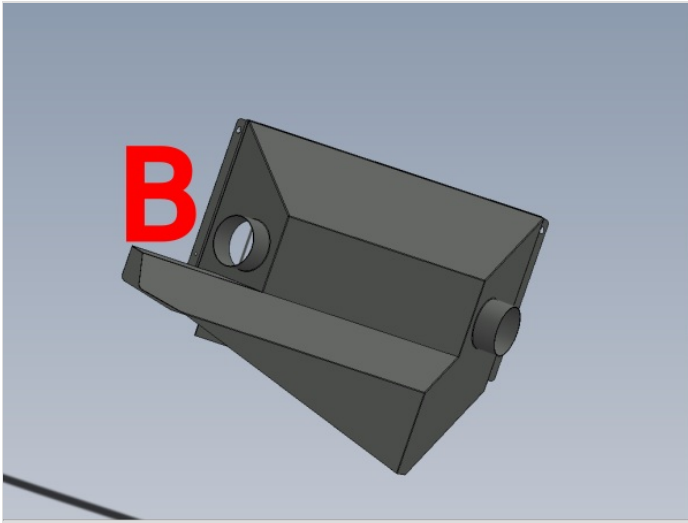
Fix with 2 off jubilee clips



Step 4 - Connect B from 3 way branch

Connect from 3 way branch to saw read door point B

Fix with 2 off jubilee clips



Step 5 - Connect conveyer

Connect conveyer hard pipe to branch point C

Fix with 2 off jubilee clips

Please detail accurate and correct route for ducting

