

R0015347 Bench Assemble Duplex extraction unit

Assembly details for duplex extractor unit

 Difficulty **Medium**

 Duration **2 hour(s)**

Contents

Introduction

Step 1 - Unless otherwise stated

Step 2 - Attach mounting plates

Step 3 - Lift Extractor body

Step 4 - Attach legs

Step 5 - Set leg positions

Step 6 - Cloth bag inspection

Step 7 - Fit extraction cloth bags

Step 8 - fit waste bags

Step 9 - Remove manufacturer logos

Step 10 - Fit ear defence sticker

Step 11 - Fix Power connection

Comments

Introduction

Tools Required

Standard Spanner set

Lifting platform

standard screwdriver set

Parts Required

M0000151 Extractor Poly Bags 700G 31.5" Layflat 50" Long x 2

M0000274 Extraction Unit Duplex 2off 8' Bags (No Starter) 1850mm x 1

M0000036 ear defence sticker x 1

Step 1 - Unless otherwise stated

Use Loctite 243 on all fasteners

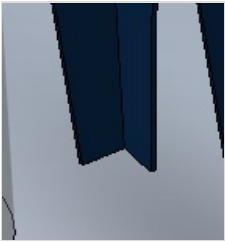
Use Loctite 572 on all threaded pneumatic connection

Pen mark all fasteners to show finalised



Step 2 - Attach mounting plates

Loose fit 4 off mounting plates to legs with supplied fixings in kit





Step 3 - Lift Extractor body

Use Red lift trolley to raise extractor body to an appropriate height for fitment of legs

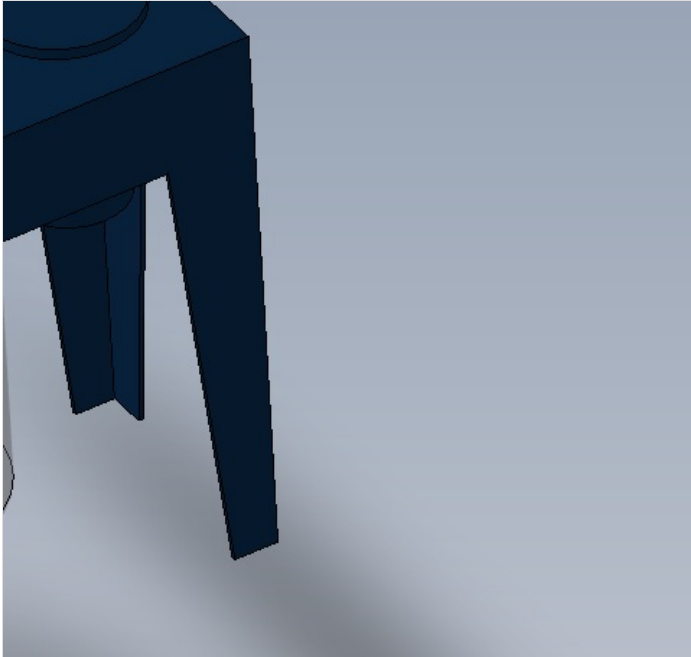


Step 4 - Attach legs

Loose fit 4 off legs to extractor unit when being supported by lifting platform

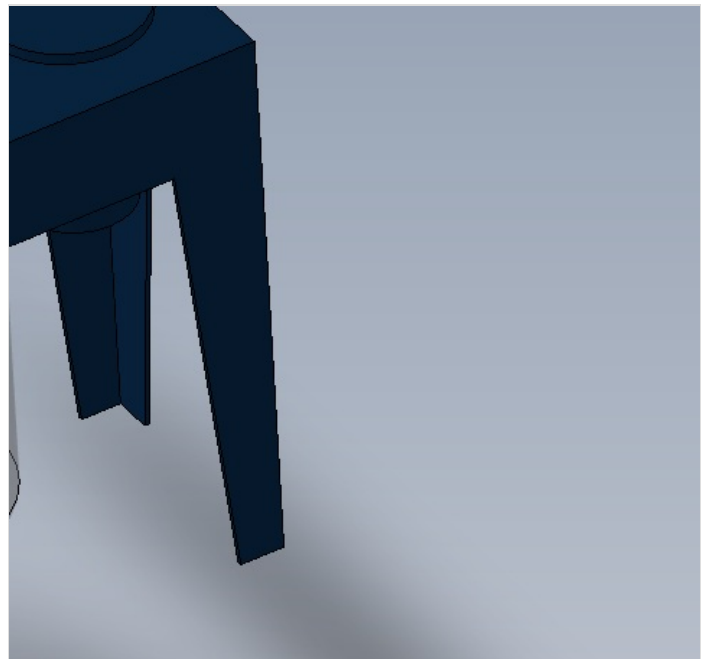
Use supplied fixings within kit.

Note some fasteners will fit to a rivnut, some will be backed off with nuts. Take note when removing fixings to enable correct refitting when mounting legs to unit



Step 5 - Set leg positions

Sit assembled extractor on floor and add final tension to all legs and mounting plates to ensure unit sits flat on floor



Step 6 - Cloth bag inspection

The cloth bags need inspecting before fitting to extractor unit. There has been instances of bags varying in length, and this needs to be checked before fitting

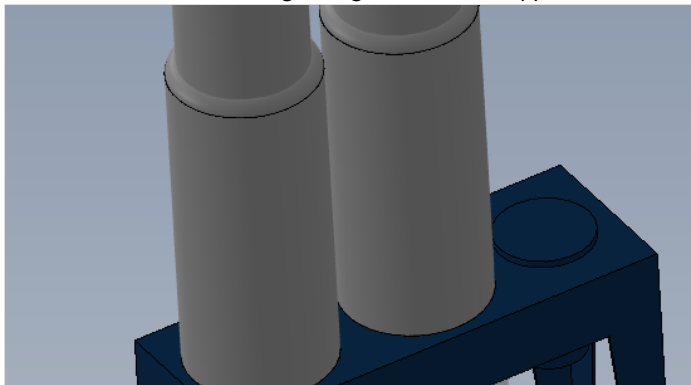
Lay both cloth bags out and check that they are the same length as each other ($\pm 25\text{mm}$)

Report any discrepancies through NCR system



Step 7 - Fit extraction cloth bags

Fit 2 off cloth extraction bags using metal bands supplied with kit

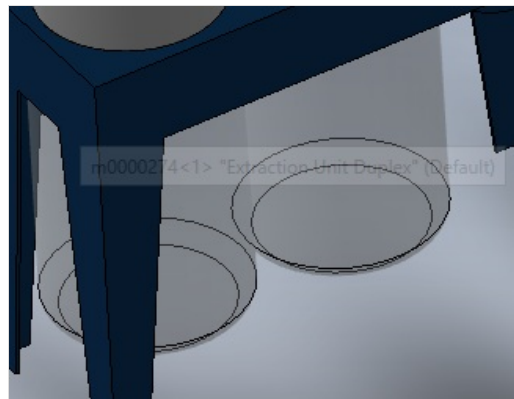




Step 8 - fit waste bags

fit 2 off clear waste bags using ratchet straps supplied with kit

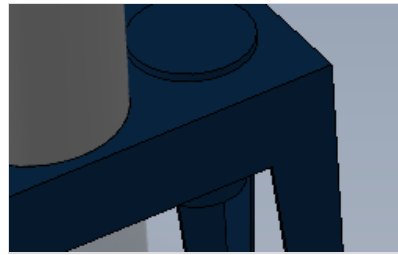
Photos please



Step 9 - Remove manufacturer logos

Remove all logos from supplier on extraction unit

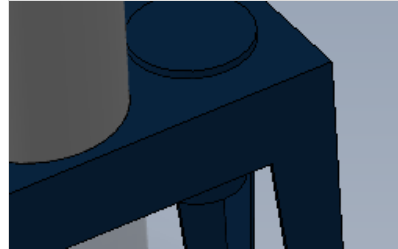
Photos Please



Step 10 - Fit ear defence sticker

Fit ear defender sticker to extractor unit

Photos please



Step 11 - Fix Power connection

1 Position for R-L machine

2 Position for L-R machine

3 Position and drill pre assembled plug (from electrical, ID as 3F1) M4

4 Connector is positioned 270mm from top of extraction unit and central on leg

