

R0015345 Conveyor Mounting Brackets

Details for fitting of conveyor mounting brackets

 Difficulty **Medium**

 Duration **0.5 hour(s)**

Contents

Introduction

Step 1 - Unless otherwise stated

Step 2 - Fit adjustable feet

Step 3 - Fit lower bracket

Step 4 - Fit upper bracket

Comments

Introduction

Tools Required

Standard hex key set

Standard spanner set

Parts required

D0001968 Conveyor Support Bracket x 1

D0001969 Conveyor Foot Mount x 1

M0000516 Adjustable Foot Ø60 M14 x 2

Step 1 - Unless otherwise stated

Use Loctite 243 on all fasteners

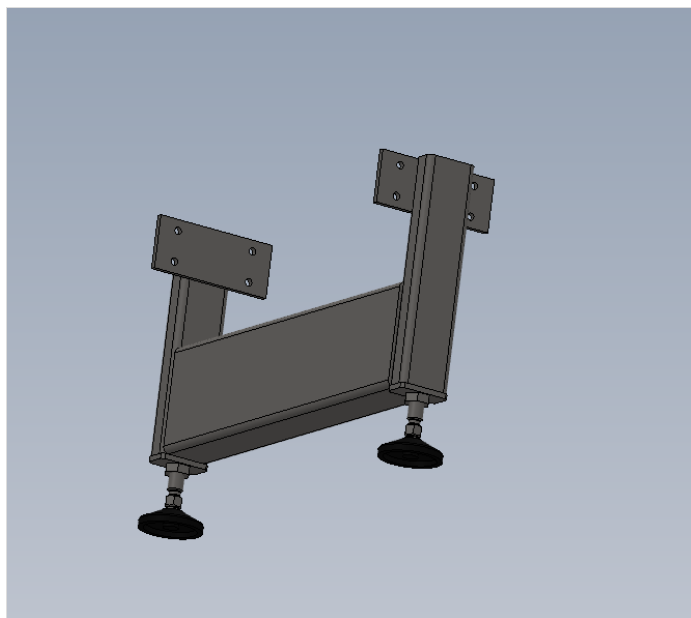
Use Loctite 572 on all threaded pneumatic connection

Pen mark all fasteners to show finalised



Step 2 - Fit adjustable feet

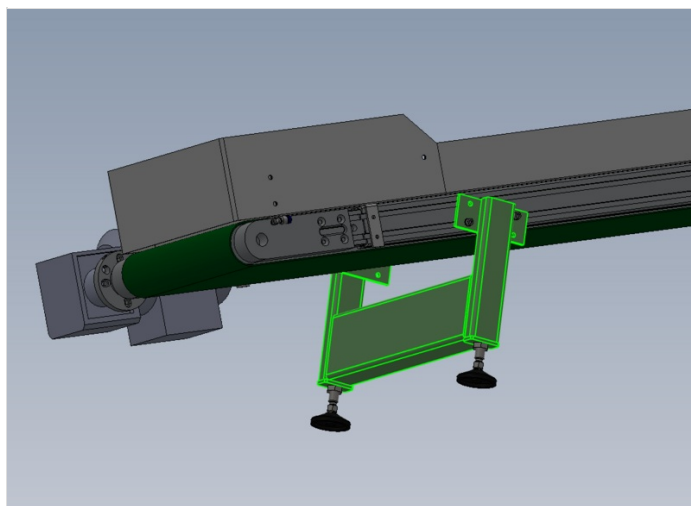
Fit adjustable feet to lower bracket



Step 3 - Fit lower bracket

Fit lower bracket to conveyor .

Use M6 x 12 socket caps , M6 A Form washers and slim M6 d nuts



Step 4 - Fit upper bracket

fit upper bracket Use M6 x 12 socket caps , M6 A Form washers and slim M6 d nuts

