

# R0015340 Drill, Assemble and Mount Electrical Cabinet

Details for drilling and fitting cabinet assembly

 Difficulty **Medium**

 Duration **2 hour(s)**

## Contents

Introduction

Step 1 - Unless otherwise stated

Step 2 - Fit braces to main frame

Step 3 - Measure pitching

Step 4 - Fit cabinet top brace

Step 5 - Position and mark lower brace

Step 6 - Drill cabinet

Step 7 - Fit cabinet

Step 8 - Check circlips

Comments

## Introduction

### Tools Required

Standard hex key set  
Standard spanner set  
Standard HSS drill set  
1000mm rule

### Parts Required

A0000164K Electrical Cabinet (Machined Door) x 1  
D0010746 Cabinet Main Mount x 2  
D0010747 Cabinet Brace x 2  
D0010771 Electrical Cabinet Swing Arm Pin x 2

## Step 1 - Unless otherwise stated

Use Loctite 243 on all fasteners

Use Loctite 572 on all threaded pneumatic connection

Pen mark all fasteners to show finalised



---

## Step 2 - Fit braces to main frame

attach 2 off braces to frame

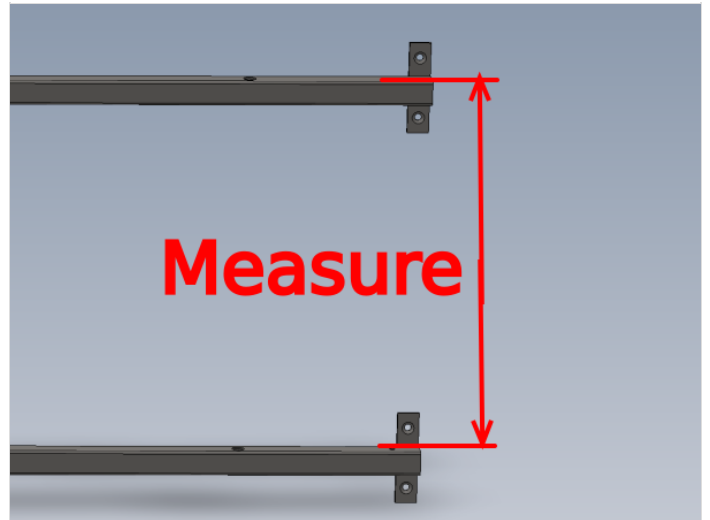
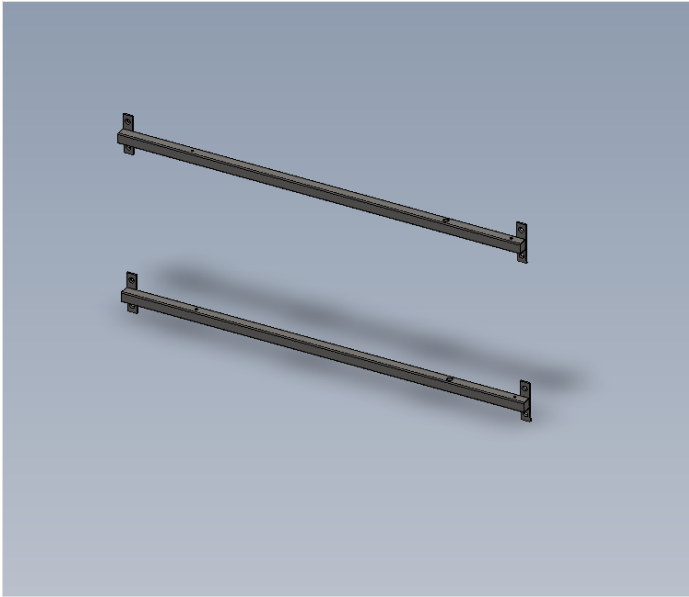


## Step 3 - Measure pitching

Measure pitching of mounted braces

Check bars are parallel .

Report any discrepancy to supervisor

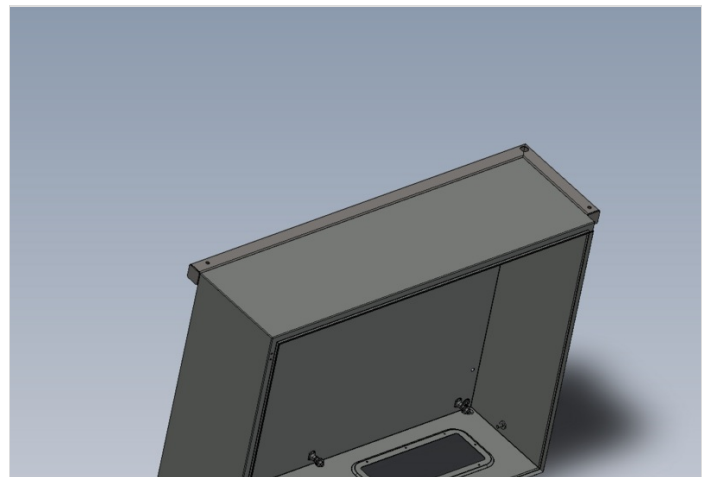


---

## Step 4 - Fit cabinet top brace

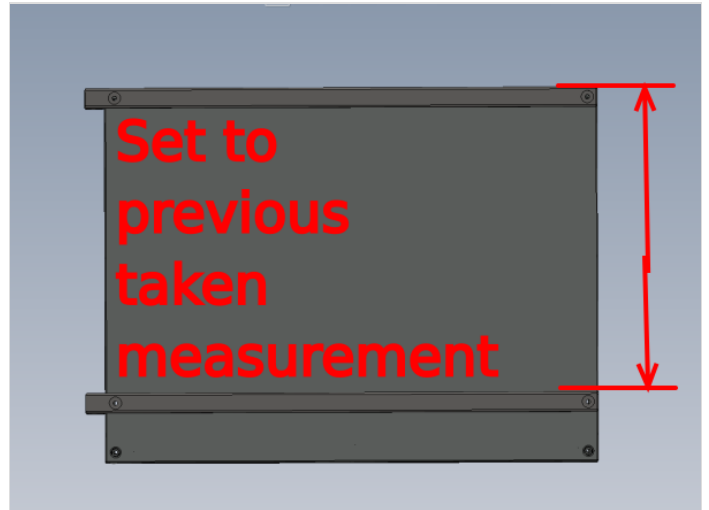
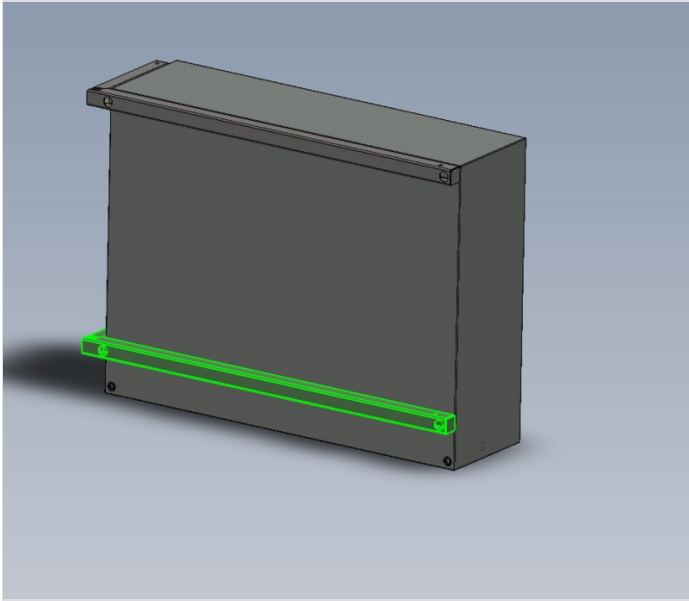
Fit cabinet top brace as shown using original cabinet mounting holes

Use 2 off M8 x 30 socket caps , 4 off M8 motor plate washers and 2 of M8 nyloc nuts



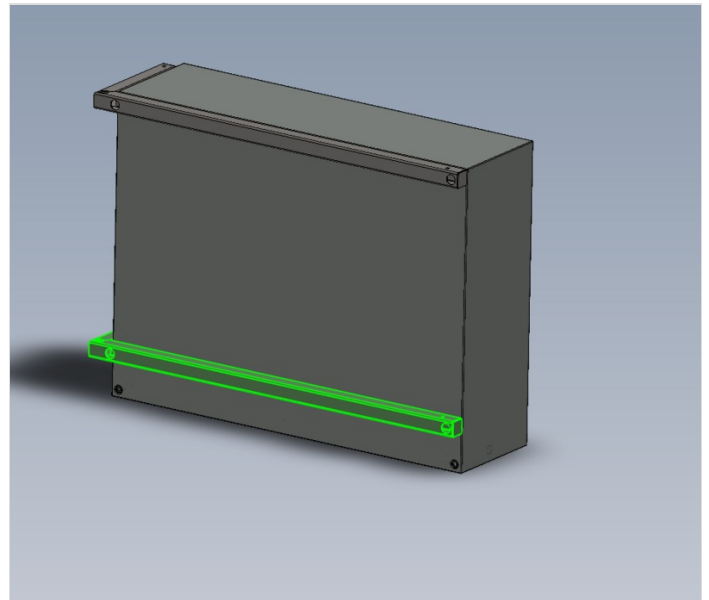
## Step 5 - Position and mark lower brace

Position lower bar and set to same pitch measurement taken on mounted frame braces



## Step 6 - Drill cabinet

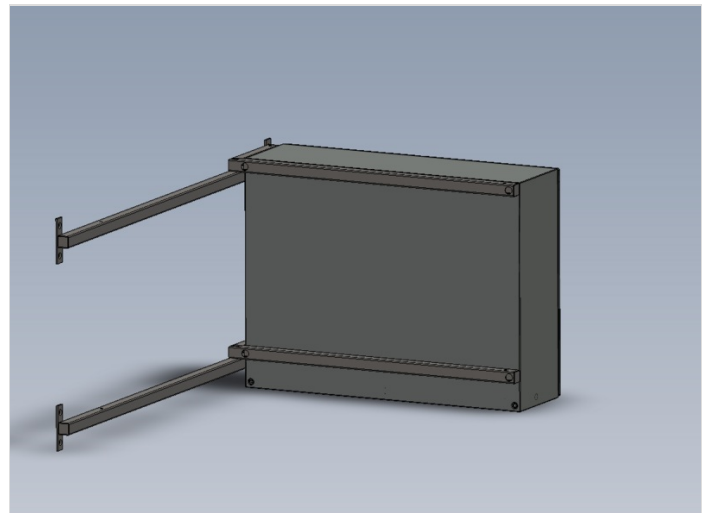
Drill off marked holes for lower brace and fit brace



## Step 7 - Fit cabinet

Fit cabinet as shown

Secure with 2 off cabinet pins



## Step 8 - Check circlips

fit 20mm external circlips to cabinet pins to ensure correct fitment

