

# R0015337 Bench Assemble Guarding Components

Assembly details for bench assembly of guarding

 Difficulty **Medium**

 Duration **1 hour(s)**

## Contents

Introduction

Step 1 - Unless otherwise stated

Step 2 - Cut Acoustic foam

Step 3 - Fit acoustic foam

Step 4 - Door Handle mounting

Step 5 - Fit door hinges

Step 6 - Fit panel edging

Step 7 - Quality instance

Step 8 - Fit stickers to front

Comments

## Introduction

### Tools Required

Standard hex key set

Standard spanner set

Standard HSS drill set

Acoustic mat cutting board and straight edge

Utility blade

### Parts Required

D0000770 Door Hinge (M0016) x 2

D0001886 Front Door Saw Mk 4 x 1

M0000002 12mm Grey Acoustic Foam with Black PVC Facing x 1

M0000539 Handle Black Nylon 200mm M8 Fixings x 1

M0000031 panel edging ( consumable stock )

M0000150 Stuga sticker clear x 1

M0000154 Stuga service sticker x 1

## Step 1 - Unless otherwise stated

All bolts to have Loctite 243 adhesive applied unless otherwise stated

All Threaded Pneumatic connections to have Loctite 570 applied

All bolts to be pen marked once adhesive applied and correct tension added



---

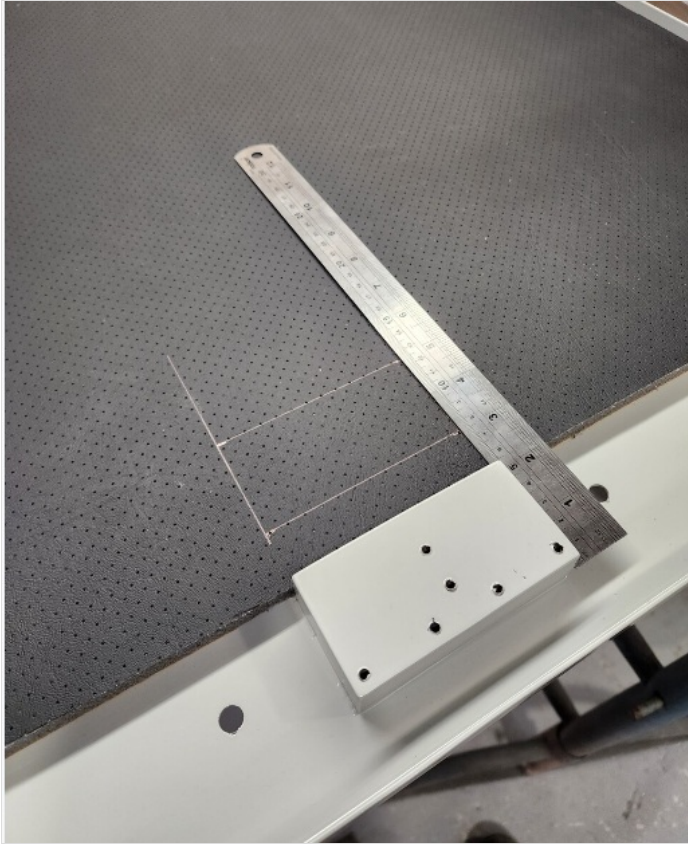
## Step 2 - Cut Acoustic foam

Measure and cut acoustic foam to internal area of front door using cutting board and straight edge

Cut Acoustic foam to clear switch mounting block

Approximate size 755 x 845mm . Measure to define exact measurement





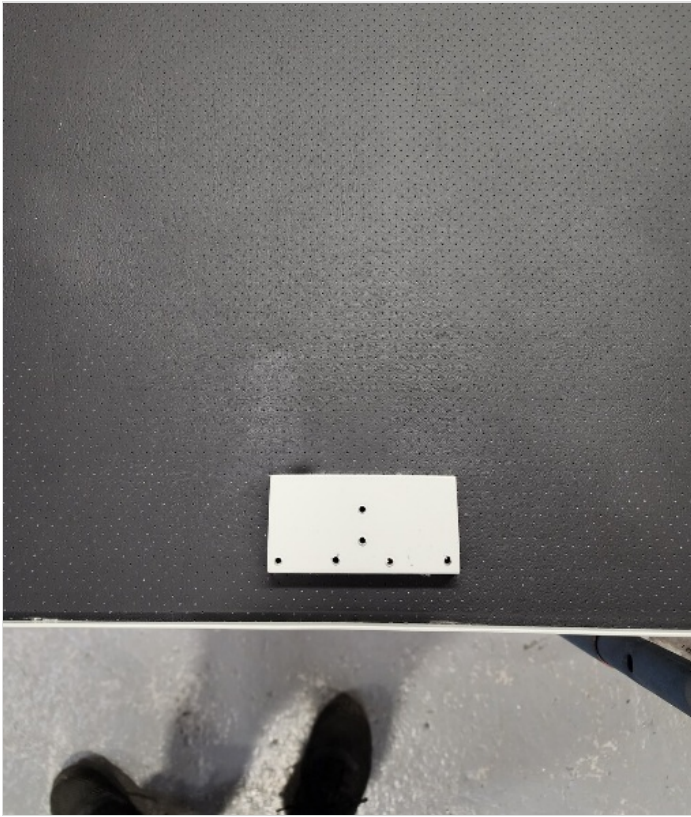
---

### Step 3 - Fit acoustic foam

Peel back small area of acoustic foam backing

Position and neatly align within door aperture

Remove all adhesive backing and finalise acoustic foam



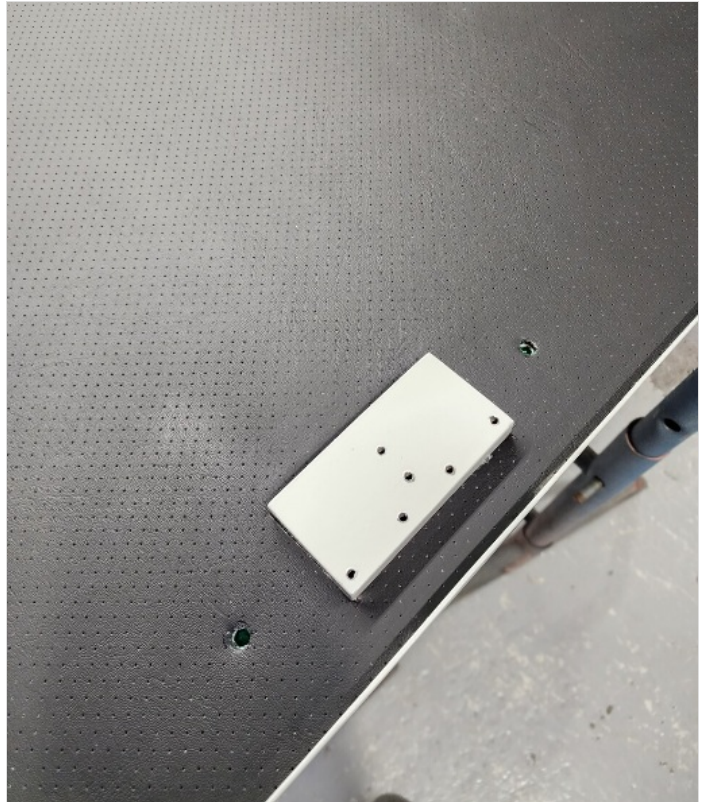
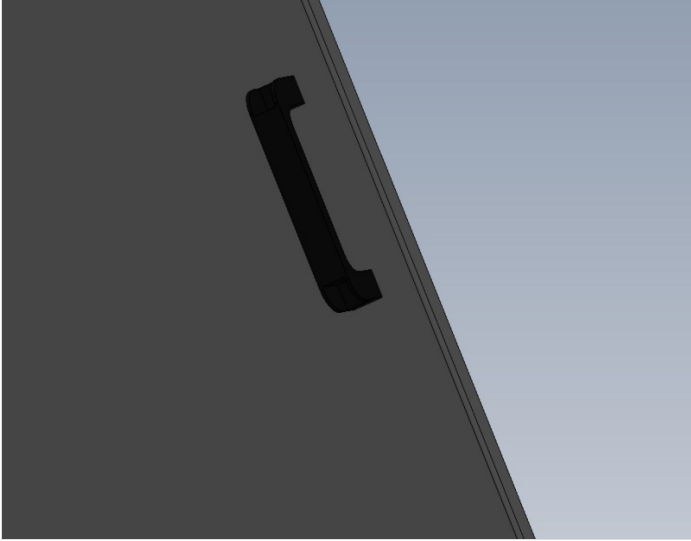


---

## Step 4 - Door Handle mounting

Drill through pre drilled holes 8.5mm in door to create clearance holes for mounting of door handle

Fix with M8 x 16 socket caps only



---

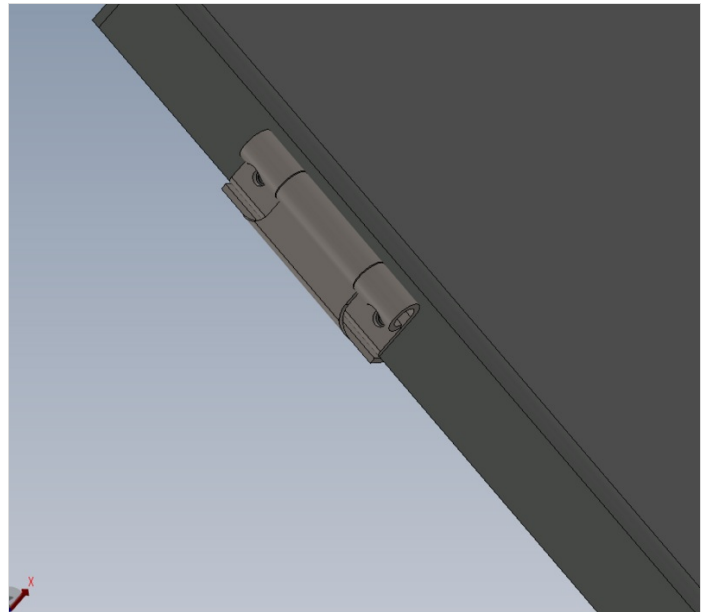
## Step 5 - Fit door hinges

Fit 2 off door hinges using

**M4 x 12 button head**, **A form washers**, **Shakeproof washers and standard nuts** (please use these fasteners)

Do not use A form washer under button head on hinge

Ensure hinges are mounted parallel

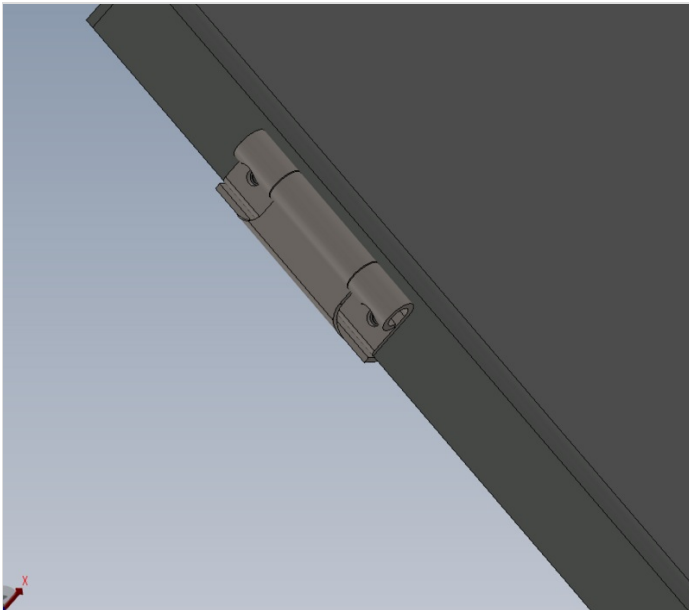


---

## Step 6 - Fit panel edging

Fit panel edging to all edges that are not covered by hinges or switch mounting block

ensure corners are pressed in flat and hinges have edging strip cut out around them







## Step 7 - Quality instance

Please ensure that when the following step is carried out, attention is paid to the straightness of the sticker when applied

Measure from both corners indicated to ensure sticker is parallel to top of door



---

## Step 8 - Fit stickers to front

Fit Large Clear stuga sticker and Stuga service sticker to front of door

Fit stuga sticker 300mm down from top face of door and central

Fit service sticker butted against bottom of stuga sticker and central

