


R0015323 Mount Electrical Cabinet

Details for final mounting of electrical cabinet

 Difficulty **Medium**

 Duration **0.5 hour(s)**

Contents

Introduction

Step 1 - Unless otherwise stated

Step 2 - Attach frame braces

Step 3 - Position Cabinet

Step 4 - Fit cabinet pins

Step 5 - Check operation

Comments

Introduction

Tools Required

External circlip pliers

Standard hex key set

Parts Required

Pre assembled electrical cabinet

Step 1 - Unless otherwise stated

Use Loctite 243 on all fasteners

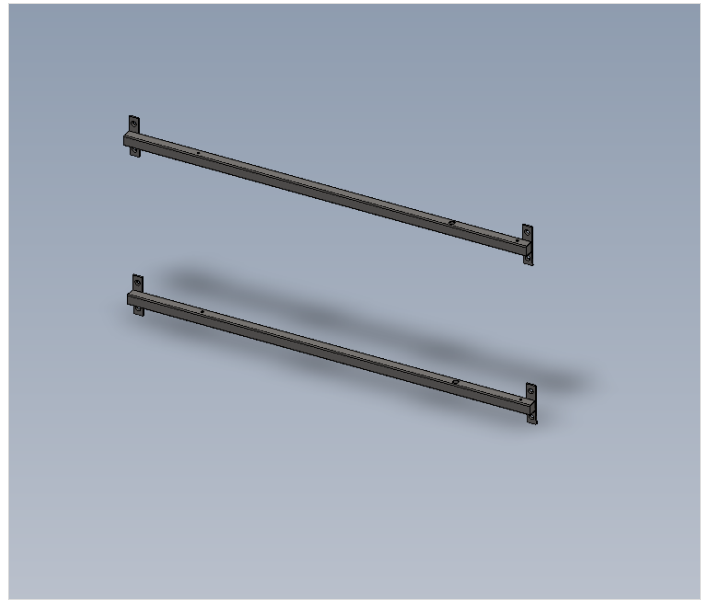
Use Loctite 572 on all threaded pneumatic connection

Pen mark all fasteners to show finalised



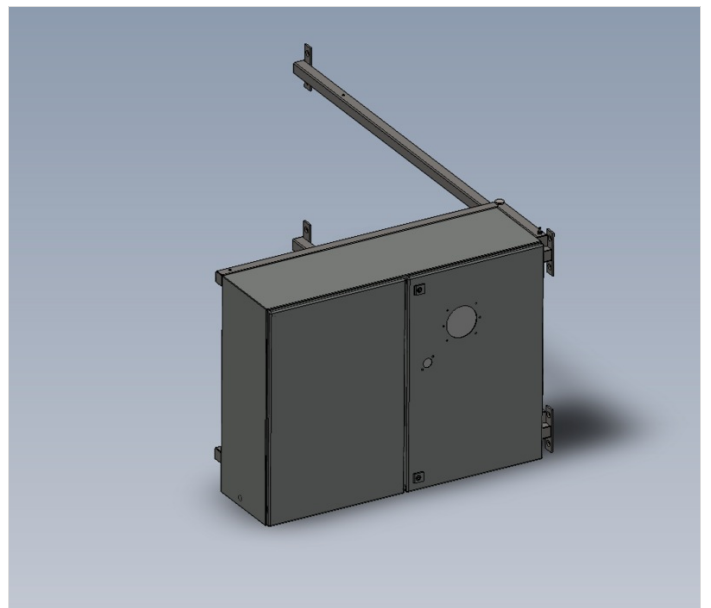
Step 2 - Attach frame braces

attach frame braces and finalise Fasteners



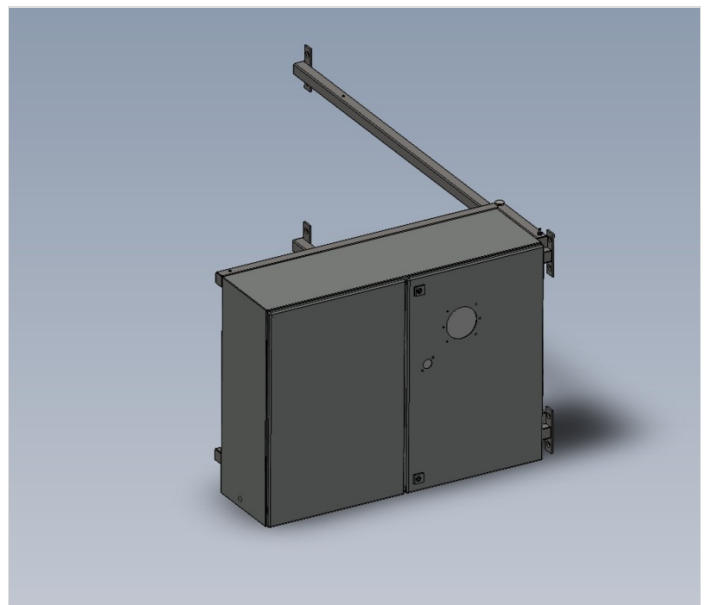
Step 3 - Position Cabinet

Position assembled cabinet onto braces



Step 4 - Fit cabinet pins

Fit cabinet pins and fit 20mm external circlips



Step 5 - Check operation

Check cabinet fully closes and opens

Ensure locking ;points are aligned and useable

