



R0015315 Fit Y Axis Drive components

Fitting instructions for Y Axis drive

 Difficulty **Medium**

 Duration **0.5 hour(s)**

Contents

Introduction

Step 1 - Unless otherwise stated

Step 2 - Fit Y axis sleeve assembly

Step 3 - Fit stepper housing block

Step 4 - Position leadscrew

Step 5 - Fit bearings

Step 6 - Final leadscrew position

Step 7 - Temporary fix leadscrew nut

Step 8 - Check movement

Step 9 - Fit servo adapter block

Step 10 - Fit servo motor

Step 11 - Finalise servo adapter block

Step 12 - Re fit servo motor

Step 13 - Fit keyway locking grub screw

Step 14 - Check movement

Step 15 - Fit Blanking plug

Step 16 - Remove leadscrew nut fixing

Comments

Introduction

Tools Required

Standard hex key set

External circlip pliers

Parts Required

B0000344 Circlip 15mm External x 1

D0001927 Intermediate Housing (AM3032) x 1

D0006487 Y Stepper Housing x 1

R0000962E Bench assemble Y axis Components

Step 1 - Unless otherwise stated

Use Loctite 243 on all fasteners

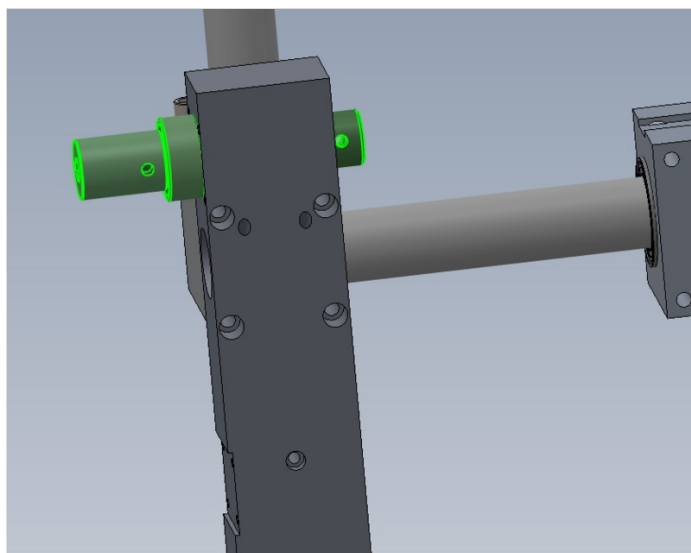
Use Loctite 572 on all threaded pneumatic connection

Pen mark all fasteners to show finalised



Step 2 - Fit Y axis sleeve assembly

Insert pre built Y axis sleeve as shown



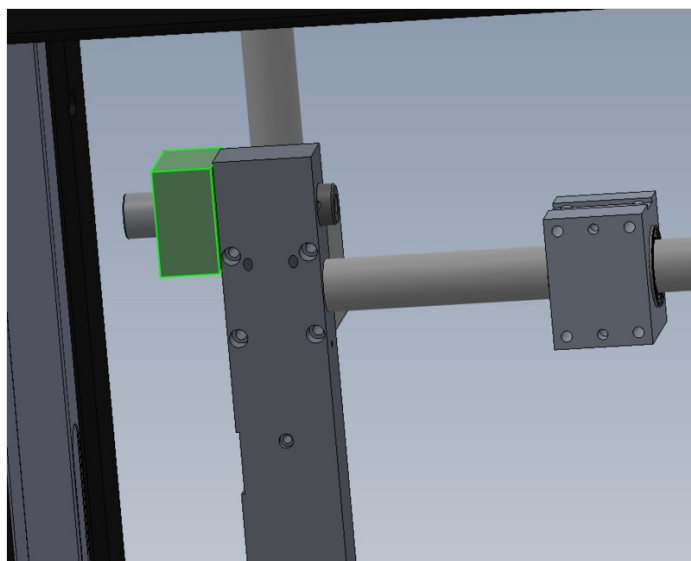
Step 3 - Fit stepper housing block

Fit Y axis stepper housing block as shown

Ensure block is mounted square and true

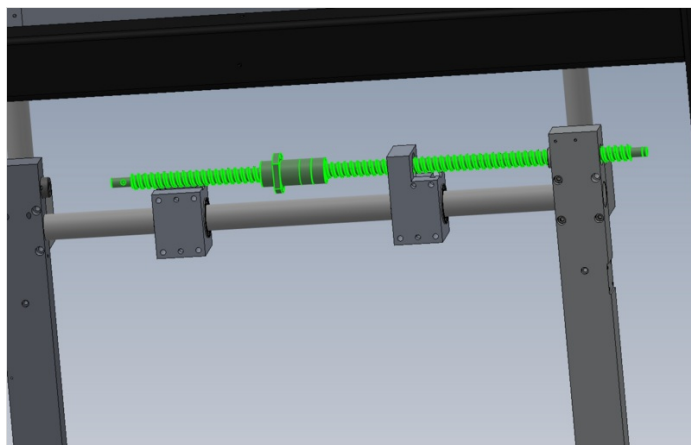
Pay attention to bearing fit

If bearing is loose, used solvent and bearing fit adhesive



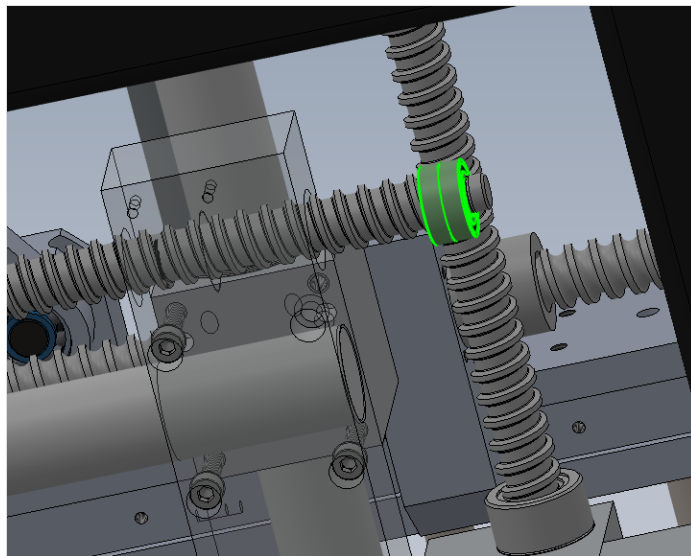
Step 4 - Position leadscrew

Slide leadscrew into position shown



Step 5 - Fit bearings

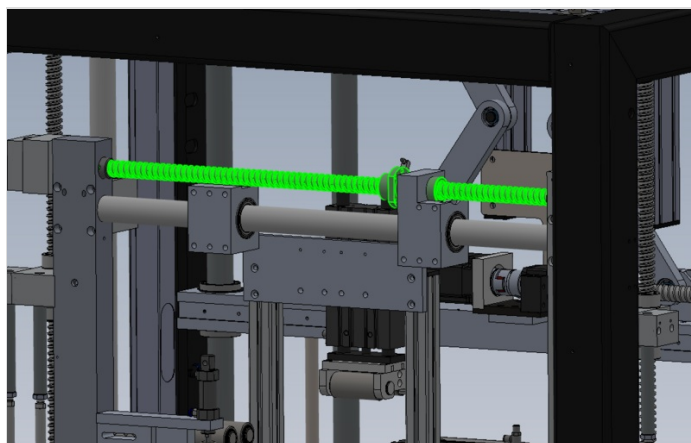
Fit 2 off bearings and captivate with circlip



Step 6 - Final leadscrew position

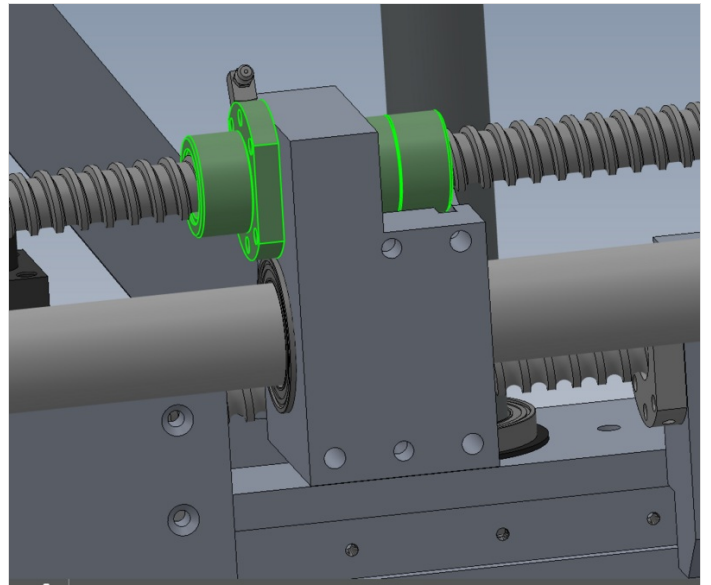
Slide leadscrew into final position

Add M8 x 12 kcp grub screws to secure leadscrew to sleeve



Step 7 - Temporary fix leadscrew nut

Temporarily fix position of leadscrew nut using 4 off M6 socket caps and a form washers



Step 8 - Check movement

Check axis movement along entire length .

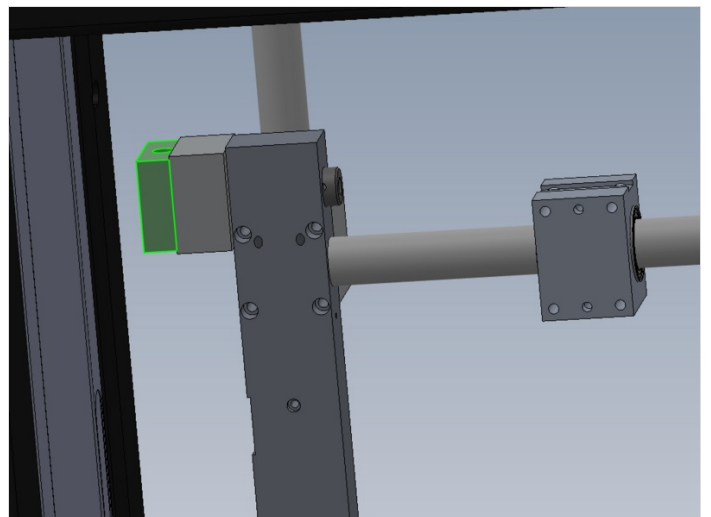
Movement should be free and consistent



Step 9 - Fit servo adapter block

Dry fit servo adapter block

do not add final tension to this block

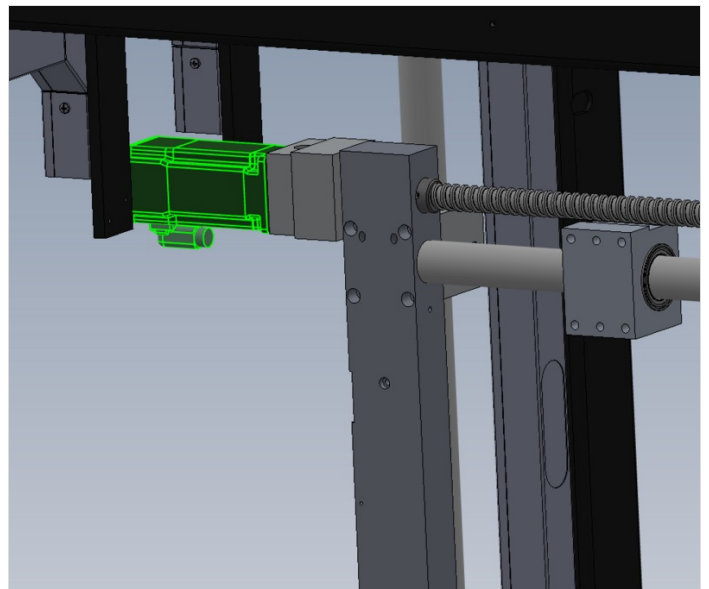


Step 10 - Fit servo motor

Fit servo motor to adapter block

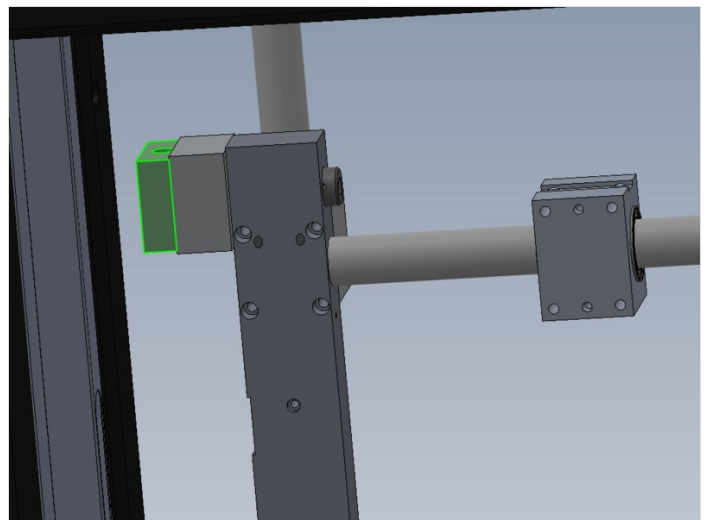
Servo should fit easily into servo adapter block

~Adjust position of adapter block if fit is not correct



Step 11 - Finalise servo adapter block

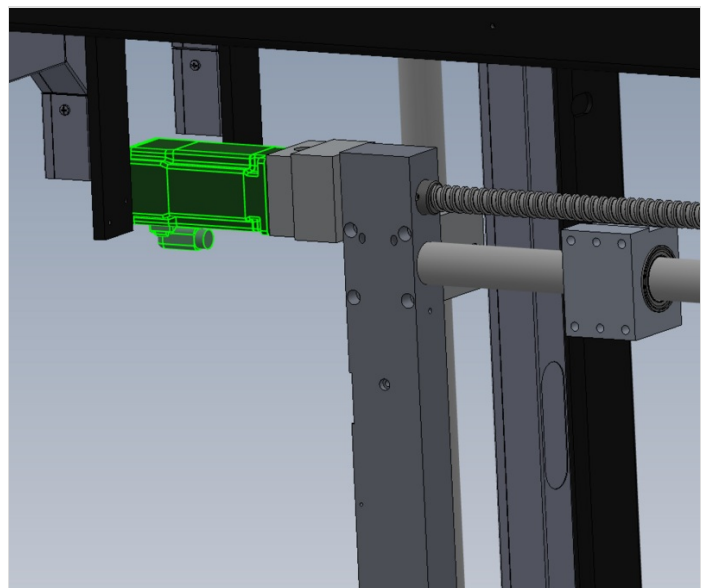
Remove servo motor and finalise fasteners on servo adapter block



Step 12 - Re fit servo motor

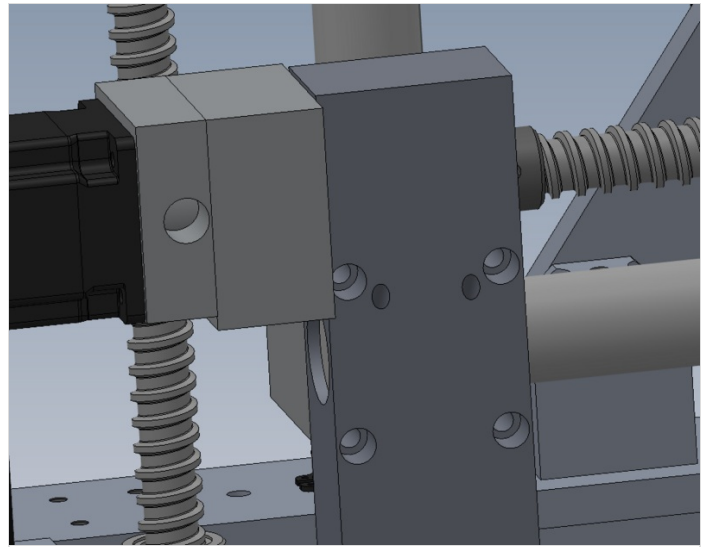
Ensure motor is orientated correctly , servo plug facing down

Finalise socket caps fixing motor to adapter block



Step 13 - Fit keyway locking grubscrew

Fit locking grubscrew accessed through indicated hole



Step 14 - Check movement

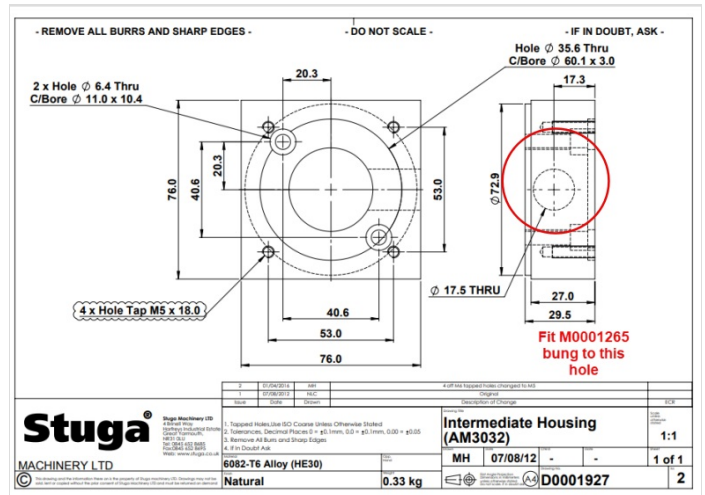
Check Axis movement again. There should be no change in consistency of movement or force required

If changes are evident, investigate!



Step 15 - Fit Blanking plug

Fit M0001265 blanking plug to seal access hole once motor is fitted and checked



Step 16 - Remove leadscrew nut fixing

Remove 4 off fasteners attaching leadscrew nut to bearing block

This is required for rotary ring installation at a later stage

