

R0015303 Fit backplates and covers

Fitting of final parts to rotary ring after electrical installation and function testing

 Difficulty **Medium**

 Duration **2 hour(s)**

Contents

Introduction

Step 1 - Unless otherwise stated

Step 2 - Prepare backplates D0007777

Step 3 - Ring Rotation

Step 4 - Fit 1st Backplate A

Step 5 - Fit 1st Backplate B

Step 6 - Fit 2nd backplate

Step 7 - Refit Access panel

Step 8 - Fit connection box covers

Comments

Introduction

Tools Required

Standard screw driver set

Standard hex key set

Countersink tool

Parts Required

D0007777 Back plate x 2

D0007844E Connection box lid x 8

Step 1 - Unless otherwise stated

Use Loctite 243 on all fasteners
Pen mark all bolts to show finalised



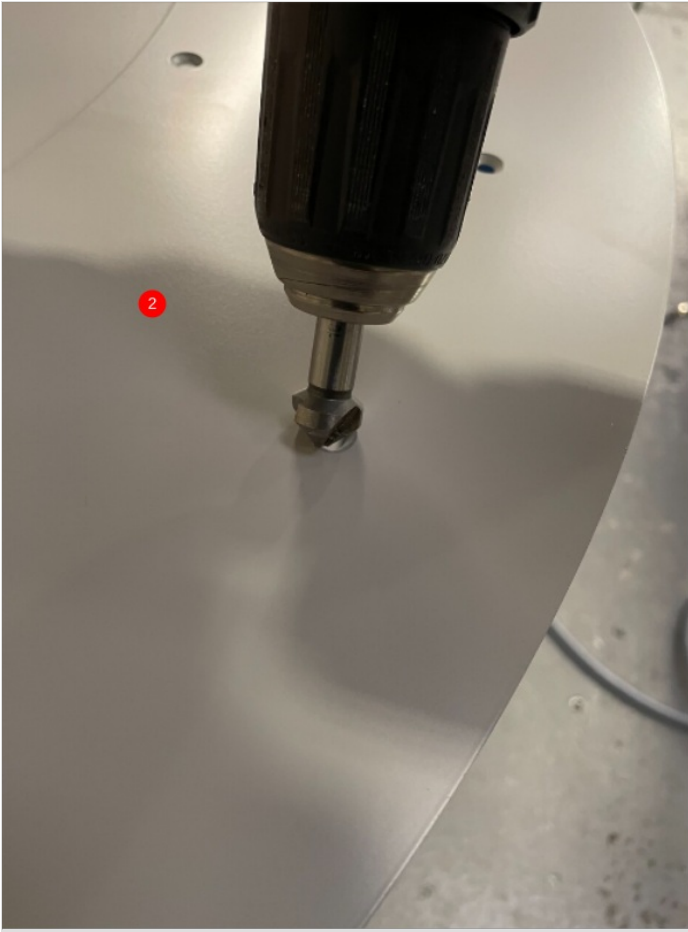
Step 2 - Prepare backplates D0007777

D0007777 backplate 2 off need checking before fitment to rotary ring. M5 countersink bolt should be flush when fitted .

1 Fastener should be as shown

2 If fastener sits proud, rework plates with countersink tool to ensure correct seating of fastener



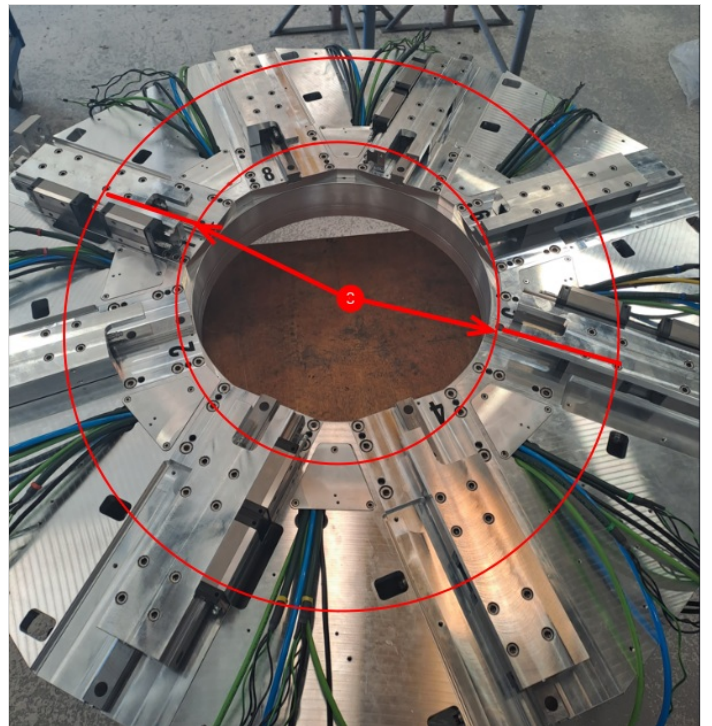
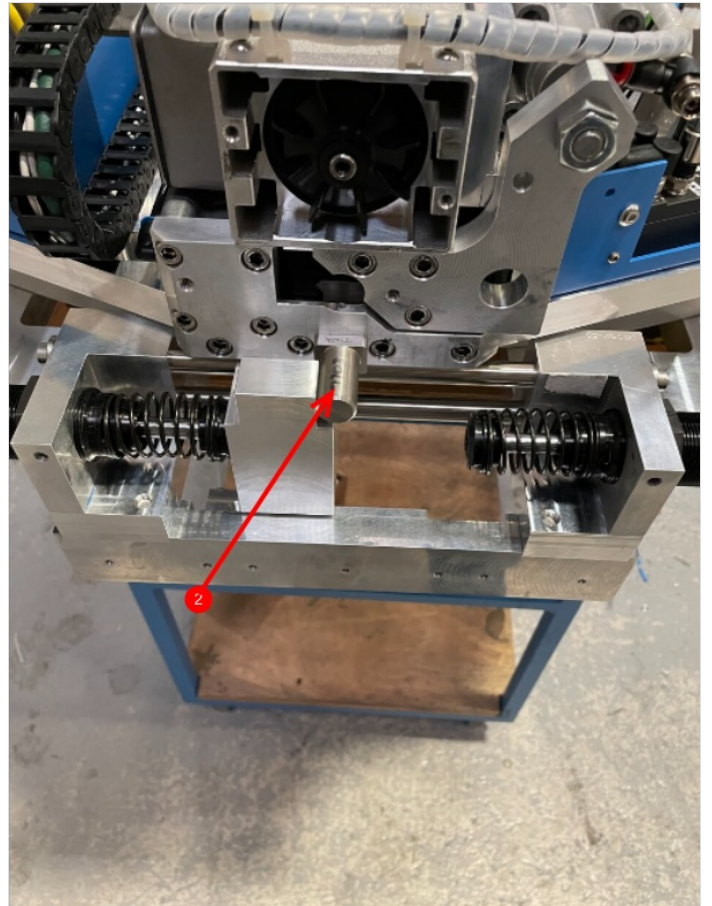
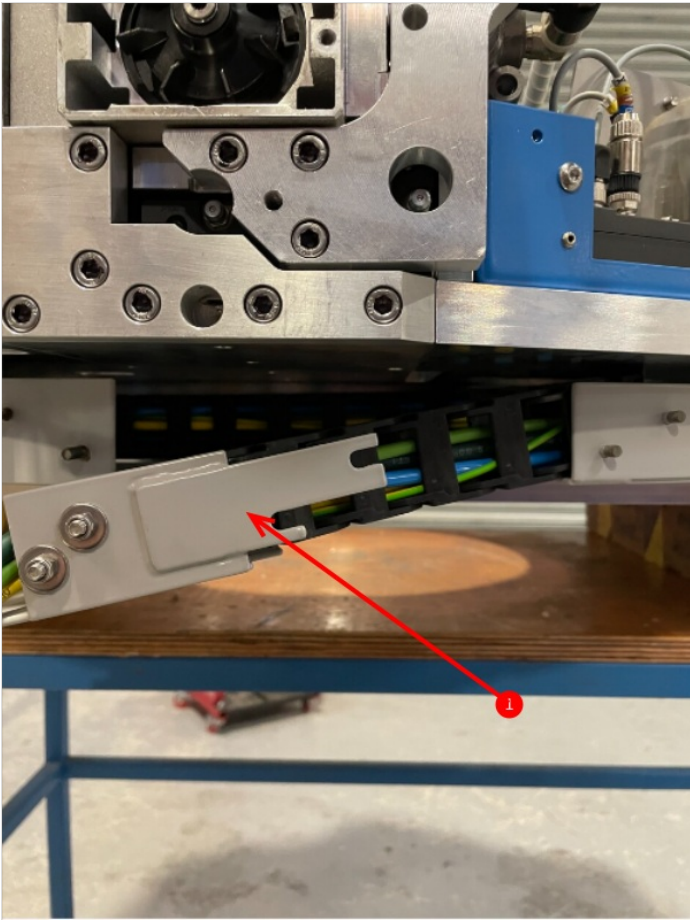


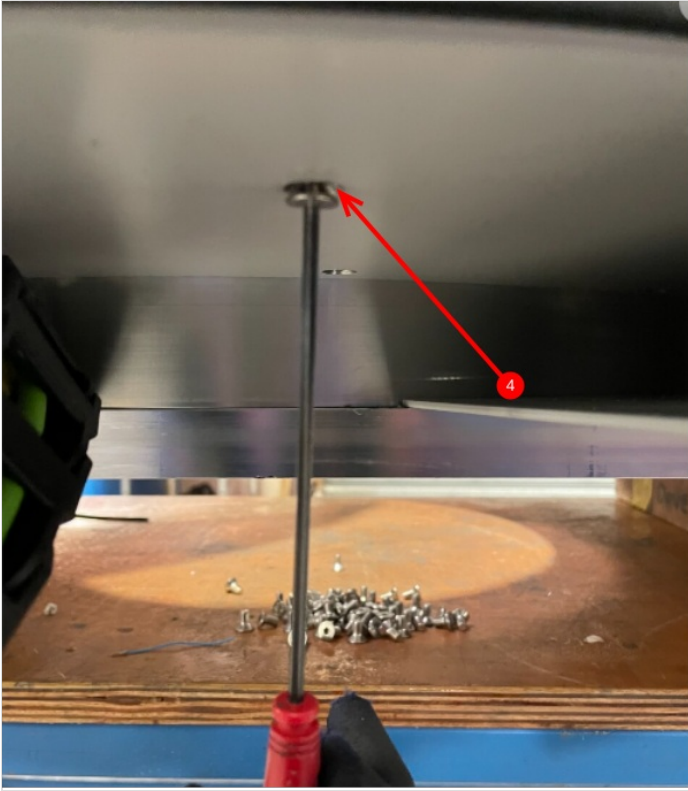
Step 3 - Ring Rotation

⚠ ...Always take care when rotating the ring at this stage. Ensure rotary trunking is monitored at all points when rotating, and any tight spots or issues should be investigated immediately. Rotary trunking damage is easy when access panel is loose

Step 4 - Fit 1st Backplate A

- 1 Detach rotary trunking inspection cover.
- 2 Rotate ring to set datum pin as shown
- 3 Slide backplate into position between points indicated
- 4 Use m5 x 10 countersink fasteners and add 1 off to point that is available in current position



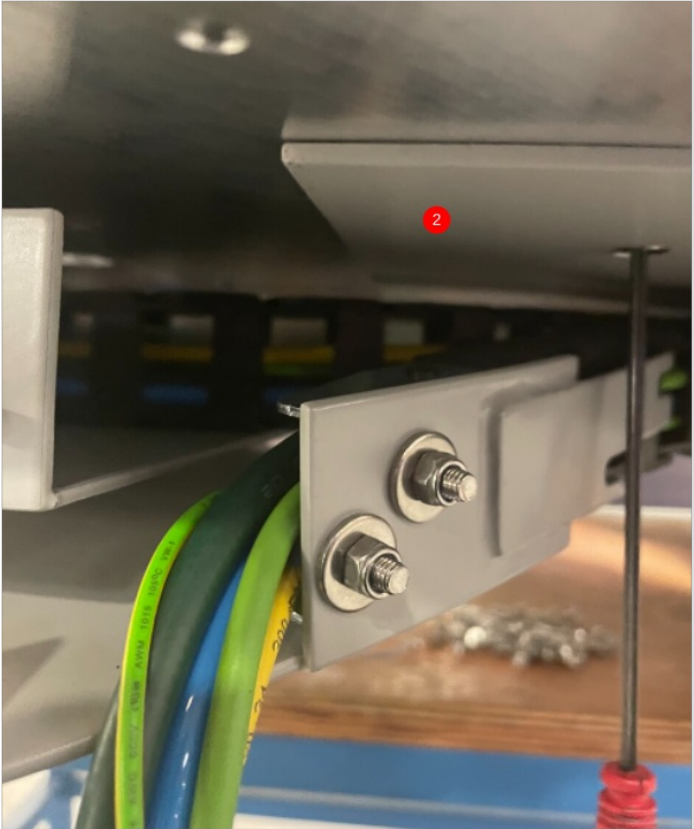


Step 5 - Fit 1st Backplate B

1 Now rotate ring to position one end of fitted backplate at access point, and add 2 off fasteners

2 Rotate ring until other end of back plate is above access point , and add 2 off fastener

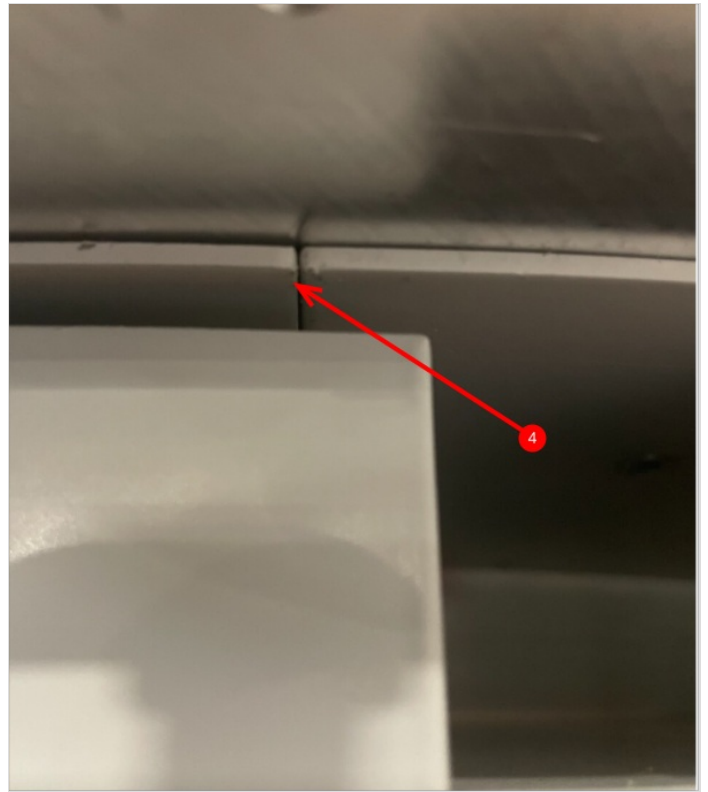
3 Now add remaining fasteners to fitted backplate , rotating the ring to provide access at each point



Step 6 - Fit 2nd backplate

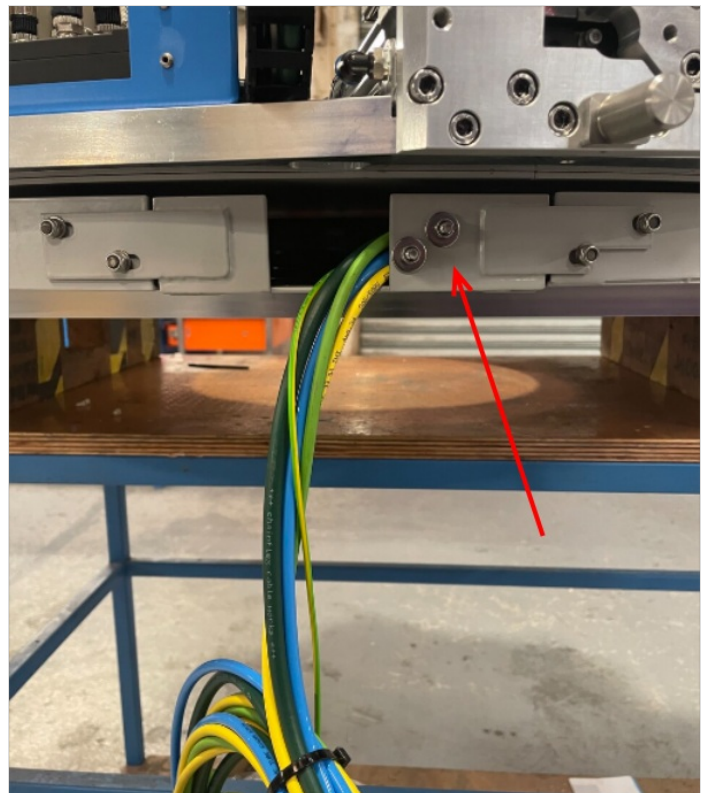
- 1 Rotate ring to allow backplate 2 to be slid into correct position
- 2 Add 1st faster at point available, then rotate ring to add fasteners to both ends of back plate
- 3 Rotate and add remaining fasteners
- 4 Ensure backplate joins sit flush to each other

i ...There will be 2 fixing points that will not be accessible at any point. These points do not require fasteners adding



Step 7 - Refit Access panel

Refit cover with m5 Nyloc nuts and washers



Step 8 - Fit connection box covers

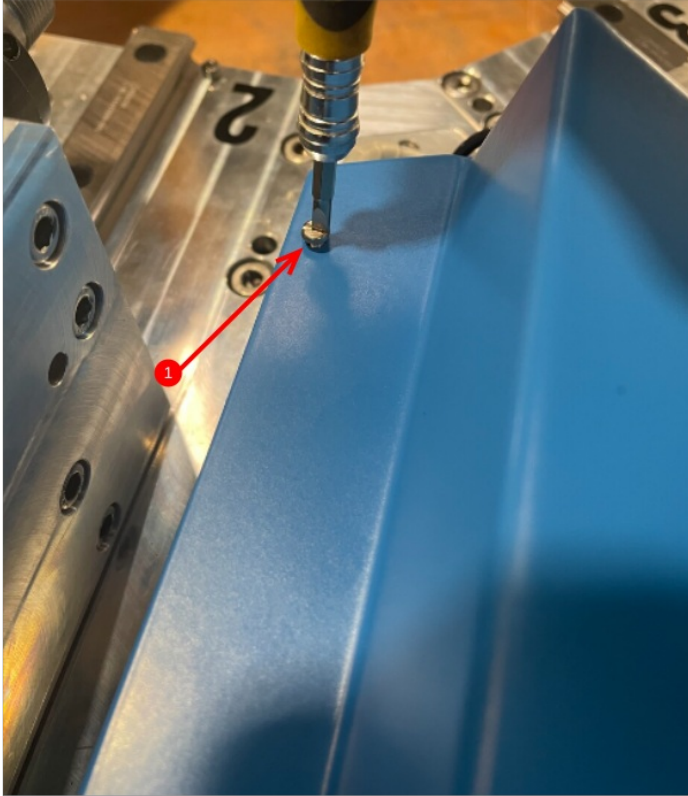
8 off D0007844E Connection box covers now need fitting

1 Position cover over connection box, and add 1 off m3 x 10 pan head fastener to point indicated

2 Add 2 off m3 x 12 socket caps with a form washer to point indicated

3 Check spindle slide movement on both assemblies that sit next to the fitted cover to ensure no contact occurs with fitted lid and slide assemblies

Repeat for 7 off remaining connection boxes



.....