


# R0015293 Install Flap Sensor Beam

Correct installation , setting and quality checks for installation of material sensor beam

 Difficulty **Hard**

 Duration **1 hour(s)**

## Contents

Introduction

Step 1 - Unless otherwise stated

Step 2 - Attach mounting brackets to module C and E

Step 3 - Position and fix Assembled beam

Step 4 - Set height of assembled beam

Step 5 - Setting Height

Step 6 - Repeat at point B

Step 7 - Finalise fasteners

Step 8 - Set sensor positions

Comments

## Introduction

### Tools Required

Standard hex key set

2 Meter straight edge

### Parts Required

R0015060 Bench Assemble Flapper Beam

M0001016 Angle 74 x 38 x 2

## Step 1 - Unless otherwise stated

Use Loctite 243 on all fasteners

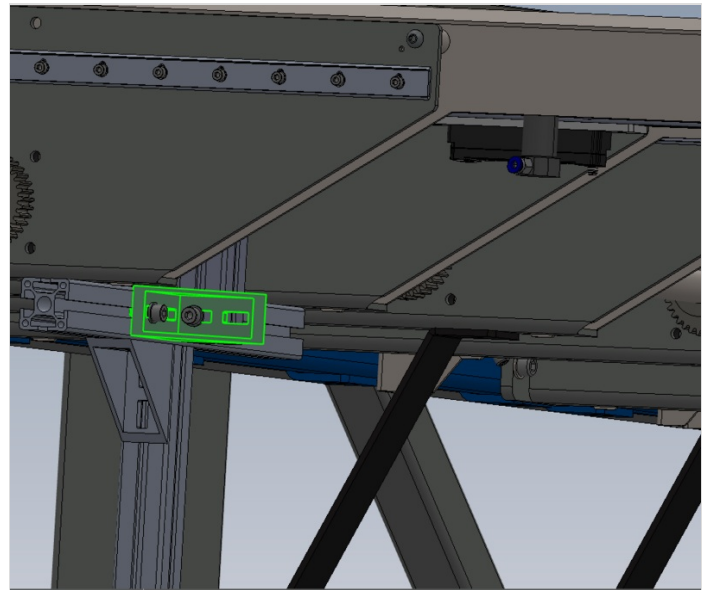
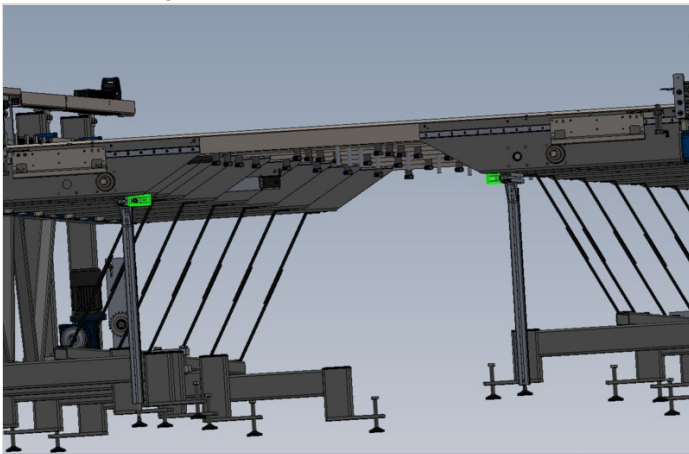
Use Loctite 572 on all threaded pneumatic connection

Pen mark all fasteners to show finalised



## Step 2 - Attach mounting brackets to module C and E

Attach mounting brackets as shown

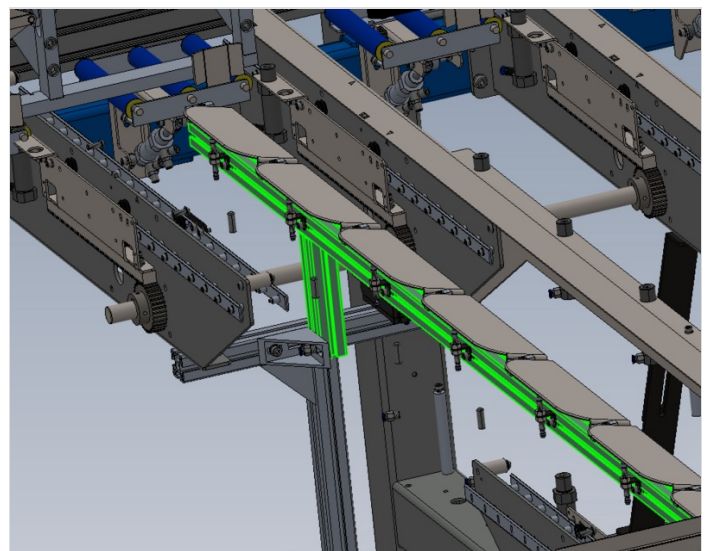


## Step 3 - Position and fix Assembled beam

(front transfer beam removed for clarity)

Fix assembled beam to supports as shown

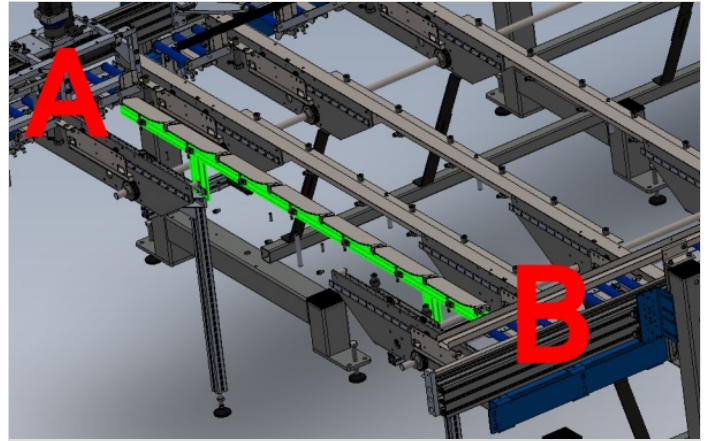
Do not finalise fasteners



## Step 4 - Set height of assembled beam

Use sliding adjustment on maytec angles /frame to adjust height of assembly

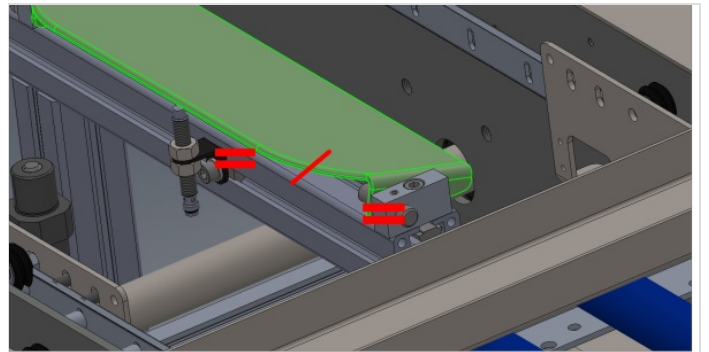
To determine correct height Set end A and B separately



## Step 5 - Setting Height

Span over transfer beams 1 and 2 with straight edge at point A

Lift or lower sensor rail assembly to match the following criteria  
When straight edge is pushed to meet radius of sensor plate, it must strike at indicated point of halfway around radius on paddle



## Step 6 - Repeat at point B

Repeat height setting at point B using same criteria

Once point B is set, check that point A has not altered



## Step 7 - Finalise fasteners

Once correct settings have been achieved, double check and finalise all fasteners used for adjusting and mounting .

Ensure all fasteners have 243 applied to threads and are pen marked as complete



## Step 8 - Set sensor positions

Repeat for each individual Sensor and paddle

1 Place straight edge over transfer beams and above sensor paddle to be set

2 Adjust sensor to touch paddle in this position

3 Wind sensor back 1/2 turn

4 tighten lock nuts to finalise, checking that shakeproof washers have been fitted to sensor

