



# R0015289 Bench Assemble Pipe Connection Rail

Details for bench assembly of pneumatic rail

 Difficulty **Medium**

 Duration **3 hour(s)**

## Contents

Introduction

Step 1 - Unless otherwise stated

Step 2 - Attach Tee connectors on support rail one L-R configuration

Step 3 - Attach Tee connectors on support rail one R-L configuration

Step 4 - Attach Tee connectors on support rail two L- R configuration

Step 5 - Attach Tee connectors on support rail two R-L configuration

Step 6 - Connecting pipes L-R configuration

Step 7 - Connecting pipes R-L configuration

Step 8 - Insert blanking plugs

Comments

## Introduction

### Tools Required

Standard hex key set  
Pipe cutters

### Parts Required

D0015557 Pneumatics Support Bar 1 x 1  
D0015579 Pneumatics Support Bar 2 x 1  
P0000159 Fitting: Stem Blanking Plug 6mm x 12  
P0001030 Fitting: SMC 6mm Equal Tee x 48

## Step 1 - Unless otherwise stated

Use Loctite 243 on all fasteners

Use Loctite 572 on all threaded pneumatic connection

Pen mark all fasteners to show finalised



---

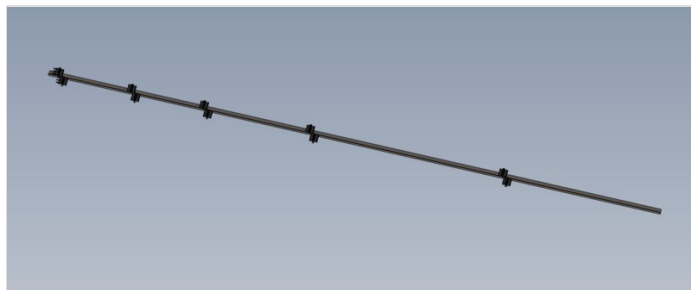
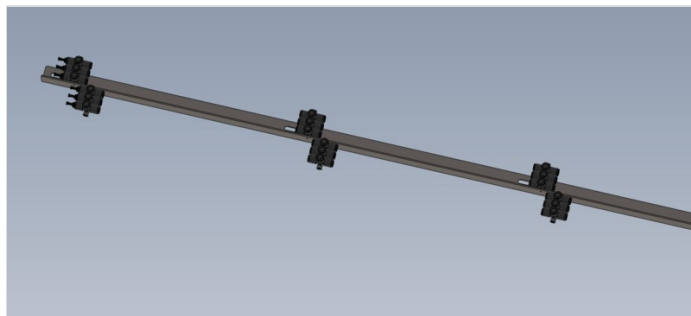
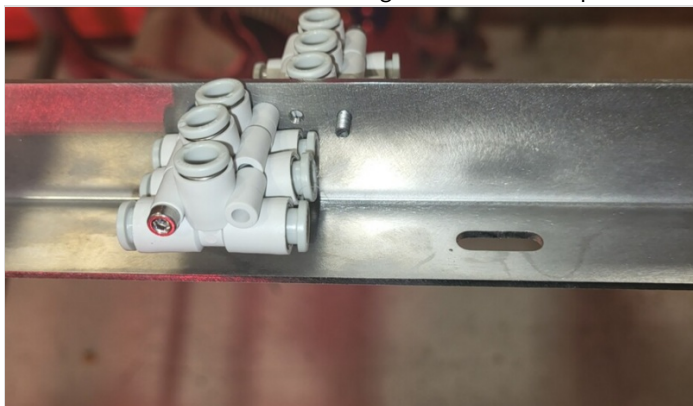
## Step 2 - Attach Tee connectors on support rail one L-R configuration

Attach Tee connectors as shown using M3 x 40 socket caps



## Step 3 - Attach Tee connectors on support rail one R-L configuration

Attach Tee connectors as shown using M3 x 40 socket caps



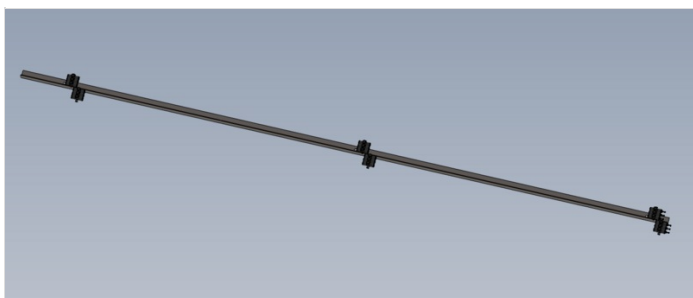
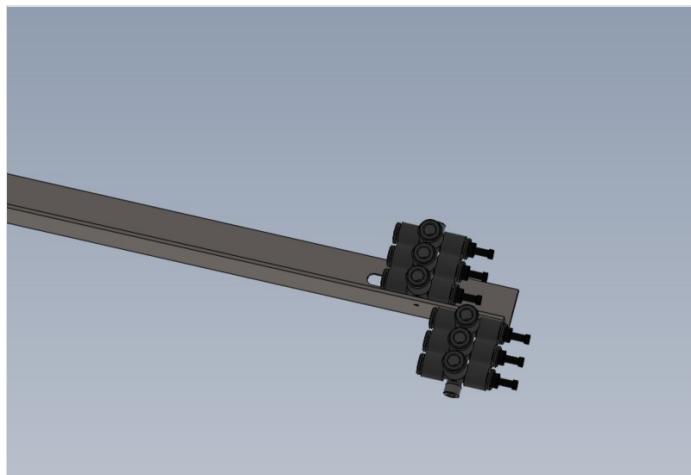
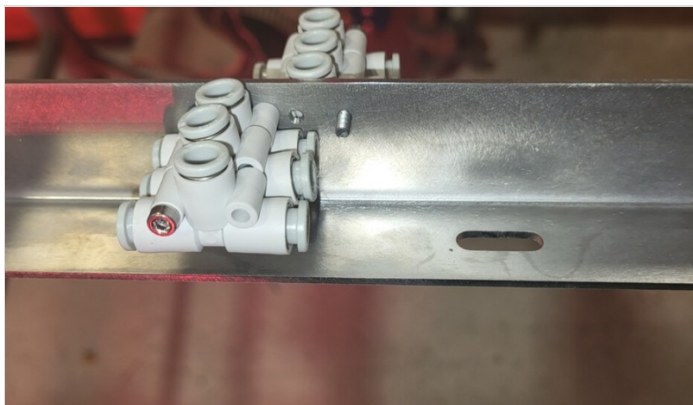
---

## Step 4 - Attach Tee connectors on support rail two L- R configuration

Attach Tee connectors as shown using M3 x 40 socket caps



## Step 5 - Attach Tee connectors on support rail two R-L configuration



## Step 6 - Connecting pipes L-R configuration

Connect pipes between Tee fitting

- 2299
- 2309
- 2319
- 2329
- 2339
- 2349



## Step 7 - Connecting pipes R-L configuration

Pipe identification

2299  
2309  
2319  
2329  
2339  
2349



---

## Step 8 - Insert blanking plugs

Insert blanking plugs into redundant ports

