

R0015268 Pneumatic module Test

Instructions for performing pneumatic test on completed module

 Difficulty **Medium**

 Duration **2 hour(s)**

Contents

Introduction

Step 1 - Prepare area for testing

Step 2 - Connect mains air supply

Step 3 - check home positions

Step 4 - Test Y154 output

Step 5 - Test Y157 Output

Step 6 - Test Y375 Output

Step 7 - Disconnect air supply

Step 8 - Fit brace 1

Step 9 - Fit brace 2

Step 10 - Fit brace 3

Comments

Introduction

Tools Required

Parts Required

D0015513 Arm brace x 2

D0015514 Arm brace x 1

Step 1 - Prepare area for testing

Ensure area is clear and free from personnel

Step 2 - Connect mains air supply

Connect mains air supply and check for any leaks present in components natural state

Step 3 - check home positions

Check home positions are correct in natural state

Loader wheel Y154 should be up away from roller beds in home position

Roller beds Y157 should be in the up position in home position

Blowers Y375 should be switched off in the home position

Step 4 - Test Y154 output

On valve bank, manually fire Y154 output.

Check for air leaks when output is fired

Check regulator shows pressure when fired by increasing pressure with adjusted .Once confirmed correct operation, adjust regulator to 1 bar or 0.1 mpa

Step 5 - Test Y157 Output

On valve bank, manually fire valve Y157 roller lift output

All rollers should drop down into position. When fired, check there are no air leaks present in the active position

Step 6 - Test Y375 Output

Manually fire Y357 output Check each blowers flow regulator can adjust flow rate when turned . Once confirmed , fully close flow regulator and wind out 2 turns

Step 7 - Disconnect air supply

Step 8 - Fit brace 1

Fit D0015513 at load motor end of frame .

Use M8 x 35 socket caps, M8 motor plate washers and M8 nyloc nuts .



Photo
Required

Step 9 - Fit brace 2

fit second brace D00155122



Photo
Required

Step 10 - Fit brace 3

Fit D0015514 at final position . Add M8 motor plate washer as spacer as shown

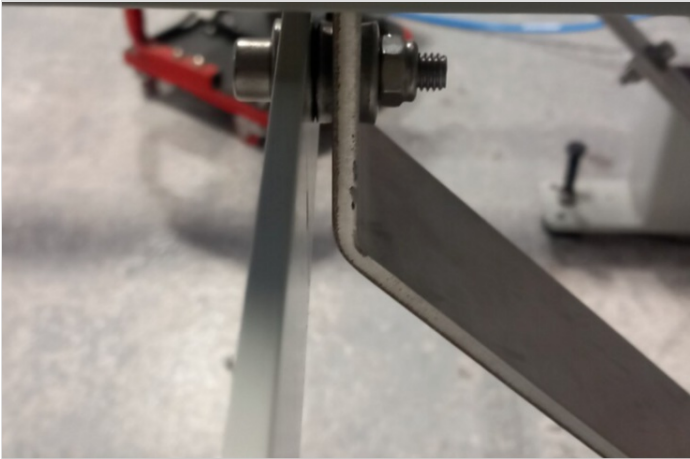


Photo
Required