



# R0015267 Assemble Backfences, Fit and Align

Alignment requirements and details for Backfence

 Difficulty **Medium**

 Duration **2 hour(s)**

## Contents

Introduction

Step 1 - unless otherwise stated

Step 2 - Ensure mains air is connected to module

Step 3 - Assemble backfences

Step 4 - Mount backfences to frame

Step 5 - Retract middle positions of backfences

Step 6 - Wire line setting

Step 7 - Quality

Comments

## Introduction

### Tools Required

Standard Hex Key set

Wire Line

150mm Rule

### Parts Required

D0015420 M/C Infeed Backfence Plate x 9

D0015468 Infeed Backfence Bracket x 9

## Step 1 - unless otherwise stated

All bolts to have Loctite 243 adhesive applied unless otherwise stated

All Threaded Pneumatic connections to have Loctite 570 applied

All bolts to be pen marked once adhesive applied and correct tension added



---

## Step 2 - Ensure mains air is connected to module

Connect mains air to module to allow setting of roller beds

---

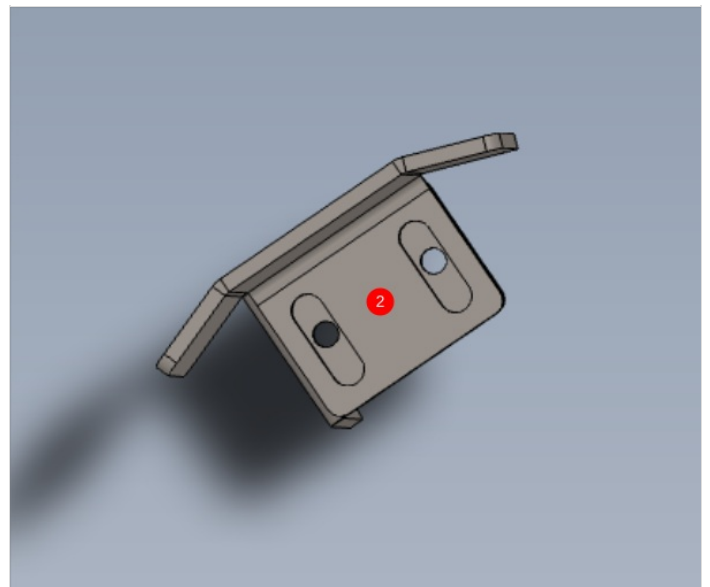
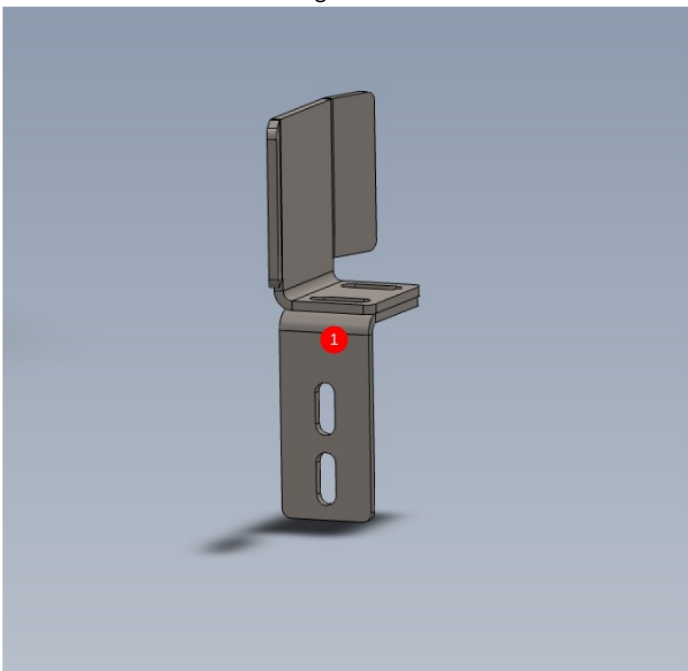
## Step 3 - Assemble backfences

1 Mount D0015420 M/C Infeed Backfence Plate to D0015468 Infeed Backfence Bracket as shown

2 position at middle slot as shown

Use 2 off M6 x 12 Socket cap and A form washers to fix parts together

Do not add adhesive at this stage



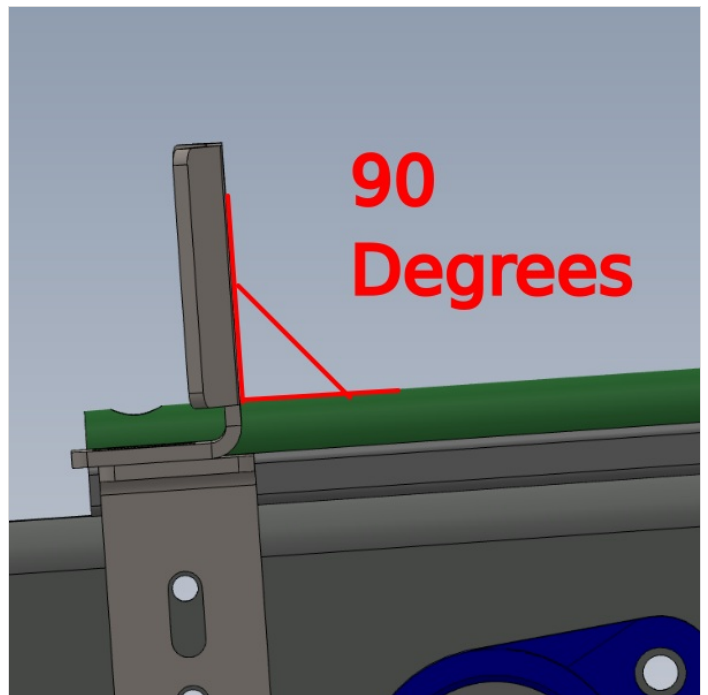
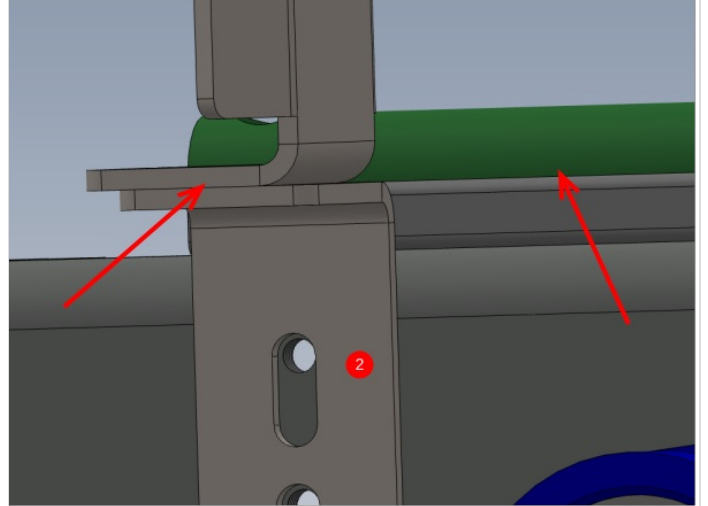
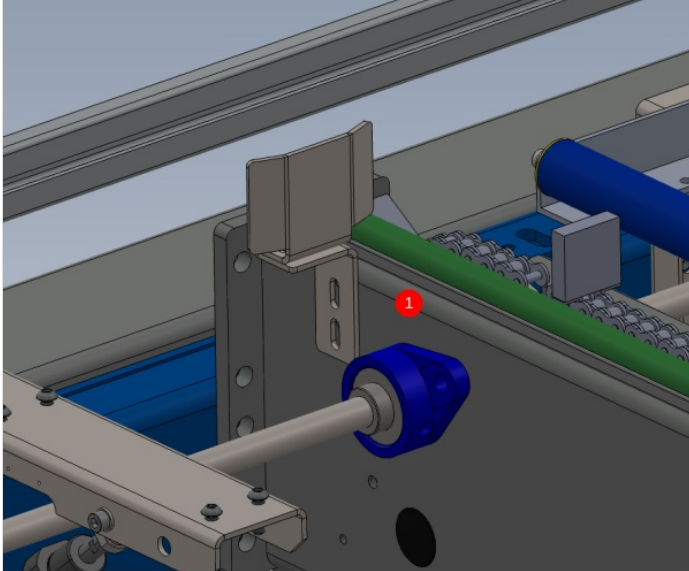
## Step 4 - Mount backfences to frame

1 Mount assembled backfences to frame in position shown on each loader arm  
(parts removed for clarity)

Use M6 x 16 Socket caps with m6 penny washers to fix

2 Set height to be as shown

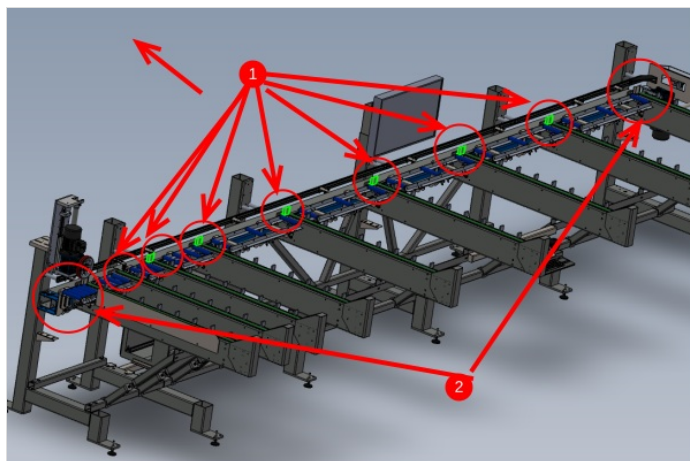
3 Ensure back fence is vertical and at 90 degrees to green runner strip



## Step 5 - Retract middle positions of backfences

1 retract indicated backfences in the direction shown to maximum movement in slot

2 Check positions shown are middle slot



---

## Step 6 - Wire line setting

Use dokit Alignment guide using wire line for correct process

Set wire line between 1st and last backfence and adjust middle 7 to correct position

Once aligned , add adhesive to all bolts one at a time

Check that no movement occurs when finalising fixings

---

## Step 7 - Quality

Sign off required once alignment is complete

