

R0015096 (c) Bench Assemble Transfer Drive Assembly

Instructions for bench assembly of transfer drives

 Difficulty **Medium**

 Duration **2 hour(s)**

Contents

Introduction

Step 1 - Unless otherwise stated

Step 2 - Assemble chain tensioner

Step 3 - Attach to mounting plate

Step 4 - Attach Base

Step 5 - Check motor assembly configuration

Step 6 - Fit Drive shaft

Step 7 - Quality check

Step 8 - Check Configuration of clutch

Step 9 - Fit clutch to motor

Step 10 - Mount motor to base

Step 11 - Attach clamps

Comments

Introduction

Tools Required

External circlip pliers

Internal circlip pliers

Standard hex key set

Standard spanner set

Parts Required

H0007576 x 2

B0000139 x 2

D0007577 x 2

D0015626 x 2

D0015561 x 2

D0015562 x 2

B0001167 x 2

D0015024 x 2

B0001100 x 6

B0001166 x 2

B0000229 x 2

D0015610 x 4

Step 1 - Unless otherwise stated

Use Loctite 243 on all fasteners

Use Loctite 572 on all pneumatic threaded connections

Pen mark all bolts to show finalised



Step 2 - Assemble chain tensioner

2 off

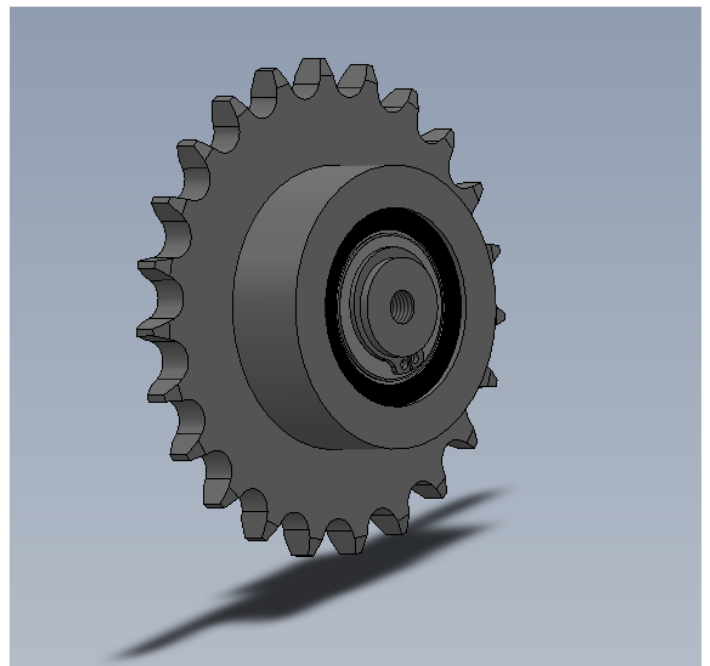
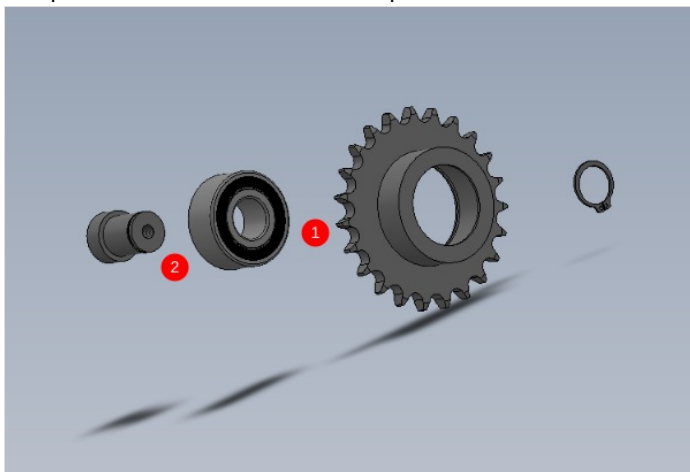
1 Press bearing B0000139 into sprocket H0007576.

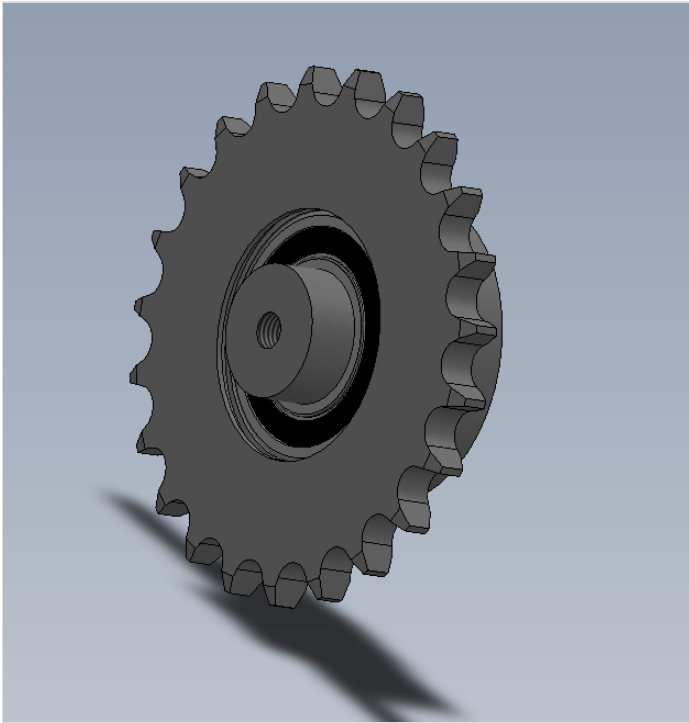
If fit is loose, use FE10 solvent to degrease parts and apply bearing fit to fix.

If fit is tight, inspect parts to Drawing to confirm correct sizes

2 Press D0007577 into sprocket and follow above for correct fitment .

3 Captivate with 20mm external circlip

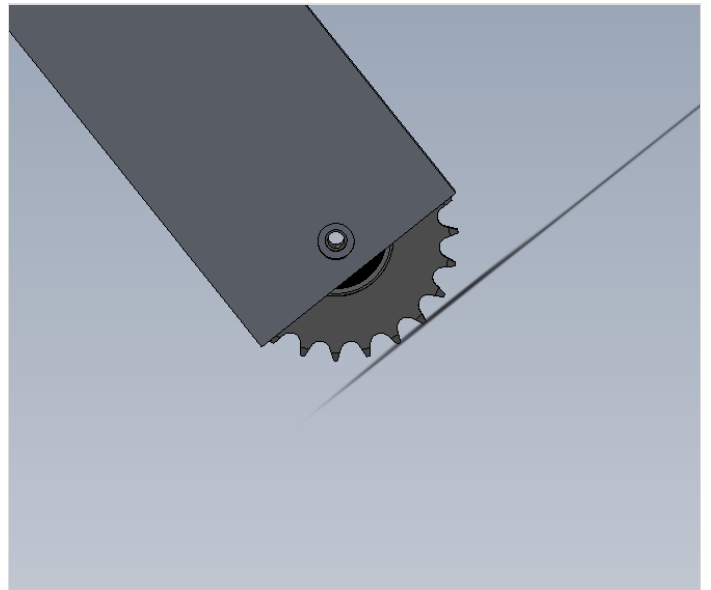
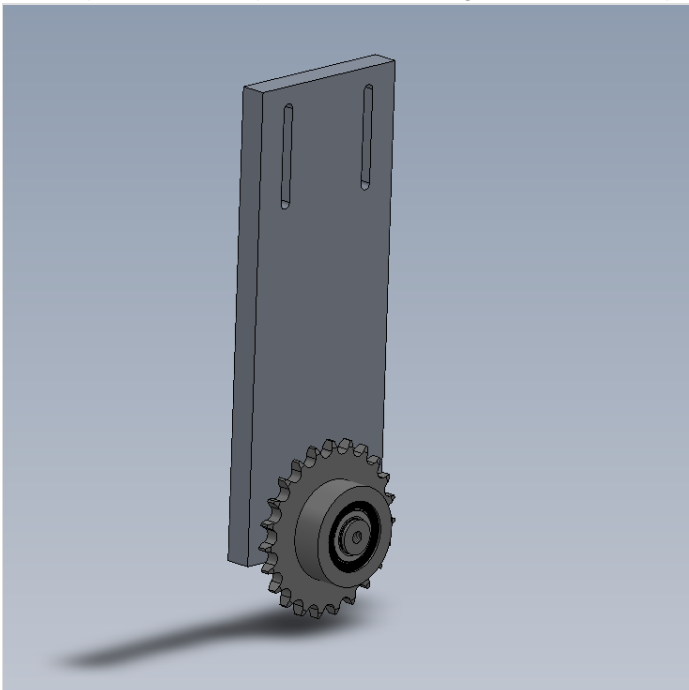




Step 3 - Attach to mounting plate

2 off

Attach sprocket assembly to D0015626 Using M8 x 35 Socket cap

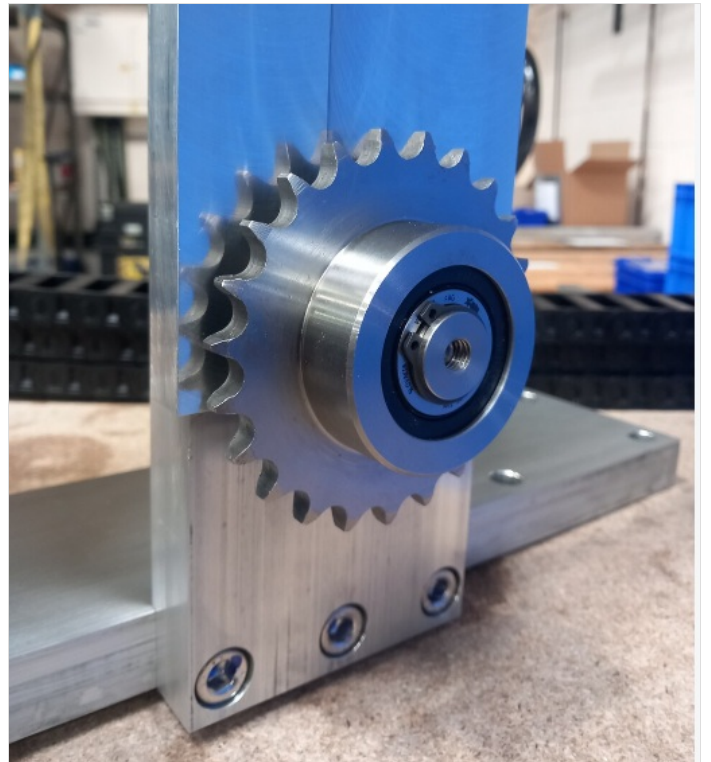
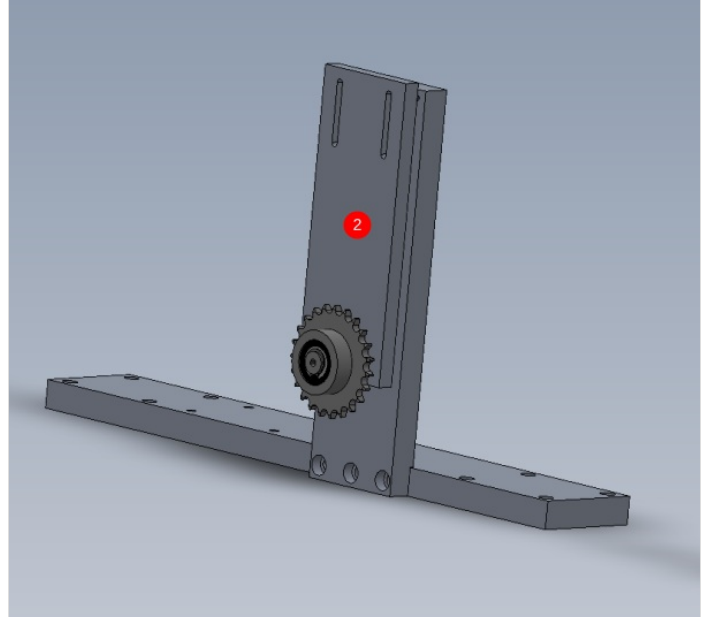
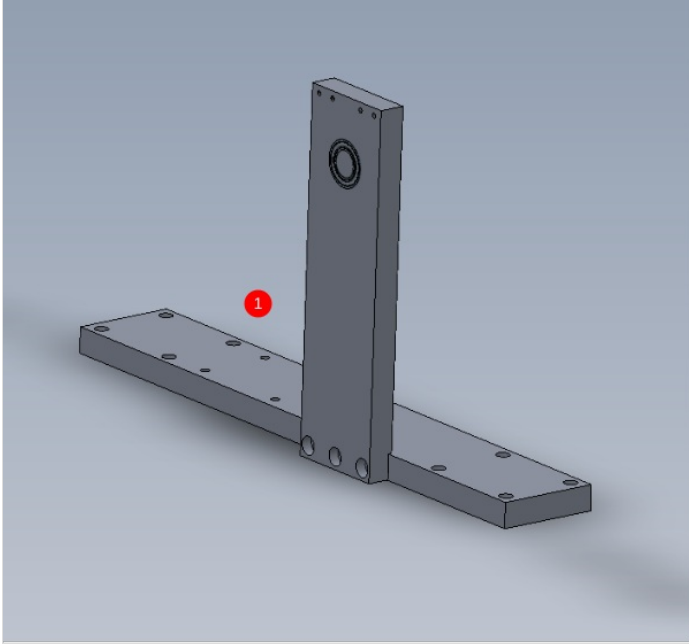


Step 4 - Attach Base

2 off

1 Attach D0015561 to D0015562 as shown using 3 off M10 x 30 socket caps

2 Mount assembled sprocket plate using M6 x 30 socket caps and heavy F0000247 M6 washers

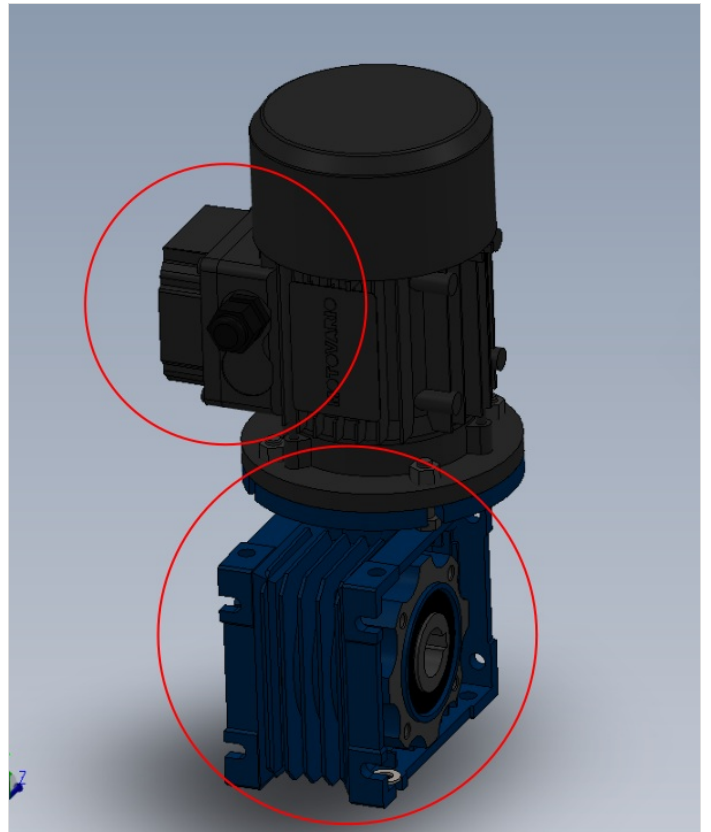


Step 5 - Check motor assembly configuration

Check motor has been supplied in the shown configuration.

Gearbox may need rotating on supplied motor assembly to match orientation shown.

Motor terminal box position is vital

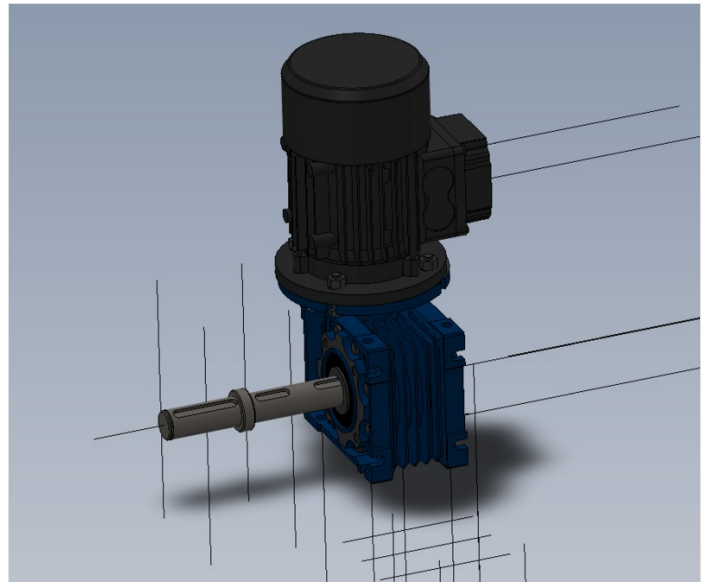
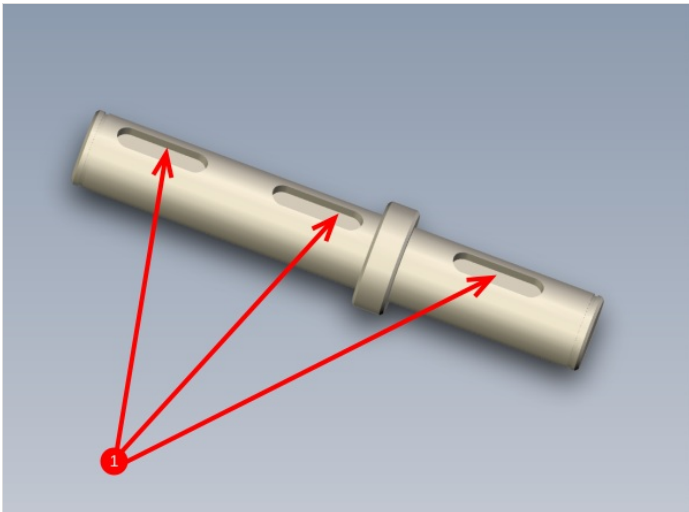


Step 6 - Fit Drive shaft

2 off

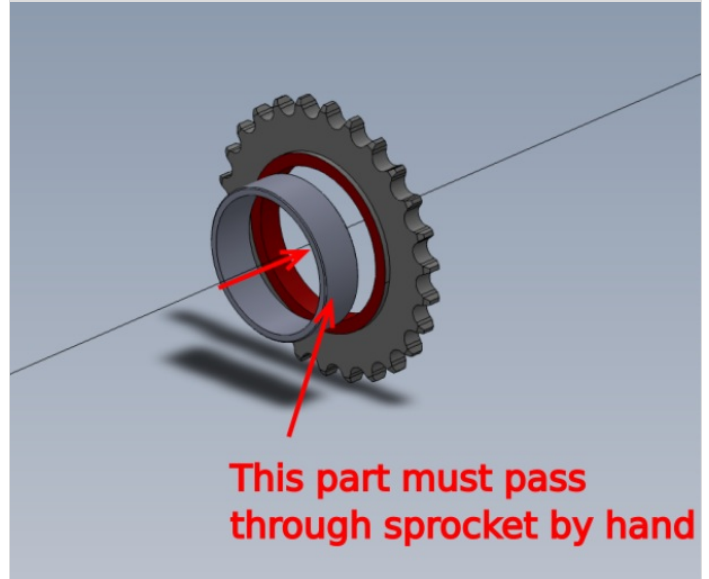
1 Insert 3 off B0001100 key into driveshaft

2 Insert driveshaft D0015024 as shown and captivate either side with external circlip



Step 7 - Quality check

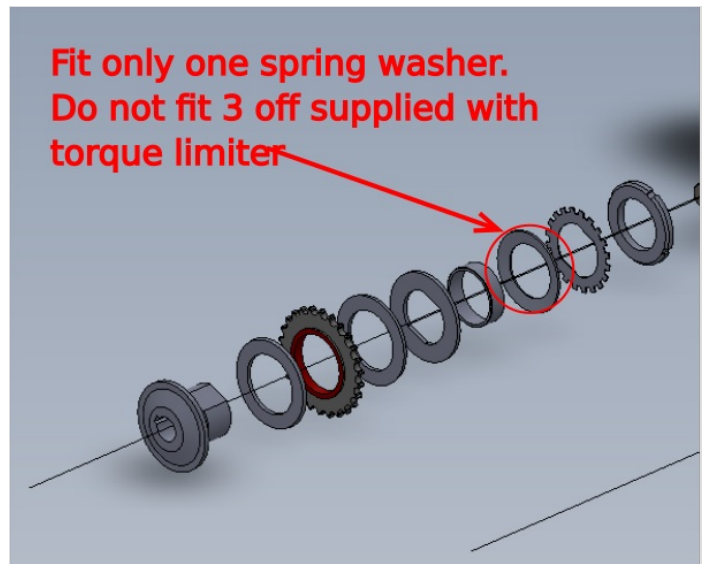
It is vital that the alignment bush can pass through the drive sprocket by hand



Step 8 - Check Configuration of clutch

Check B0000229 has been assembled in the correct order

- 1 C Spanner pressure nut
- 2 Locking washer
- 3 Spring washer 3 off
- 4 Spreader plate
- 5 Friction washer
- 6 Centralise boss
- 7 Drive sprocket
- 8 Main Flange



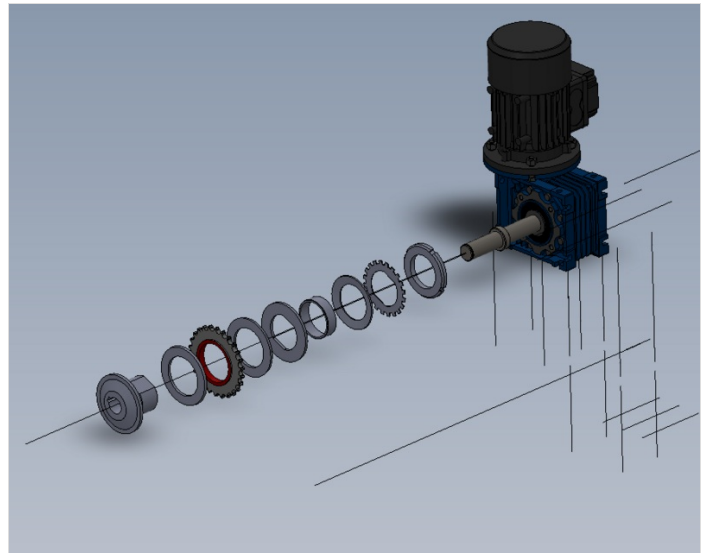
Step 9 - Fit clutch to motor

2 off

Mount clutch assembly as shown and captivate with 25mm external circlip

ECR raised 12/06/23 to address problem of grub screw lock off missing key fitted.

Until corrected, use M6 x 10 kcp grub screw to lock on to shaft

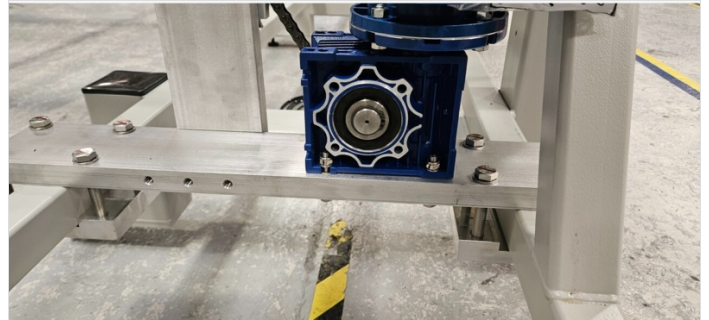


Step 10 - Mount motor to base

2 off

Attach motor to base as shown

Use M8 x 50 hex set bolts, A form washers and M8 nyloc nuts to secure 4 off mounting points



! ...Ensure fasteners are long enough to pass through nyloc section of nut

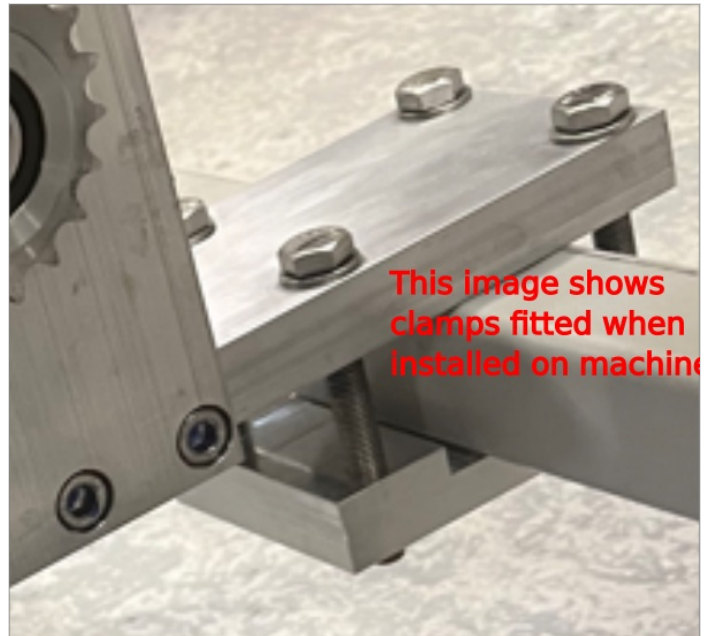
Step 11 - Attach clamps

2 off per assembly

2 off assemblies

Use M12 x 100 hex set bolts (check size) and A form washers to attach 2 off clamp plates D0015610 to assembly as shown

Chain to be fitted on assembly to frame



i ...Do not apply adhesive to these as they will be removed for installation later on