


R0015091 Mount Outfeed Beam Sensor

Assembly and fitting details for material clear outfeed sensor assembly

 Difficulty **Medium**

 Duration **1 hour(s)**

Contents

Introduction

Step 1 - Unless otherwise stated

Step 2 - Assemble reflector assembly

Step 3 - Assembly Sensor assembly

Step 4 - Attach reflector assembly

Step 5 - Attach sensor assembly

Comments

Introduction

Tools Required

Standard hex key set

Tape measure

Parts Required

D0015546 Reflector Mounting Plate x 1

D0015701 Maytec Post x 2

D0016322 Welded 90° Bracket: 76mm x 38mm x 38mm x 2

E0000279 Spare Reflectors for E0265 x 1

E0001139 Sensor: Outfeed Beam x 1

M0001059 Sensor Mount Bracket E1139 x 1

Step 1 - Unless otherwise stated

Use Loctite 243 on all fasteners

Use Loctite 572 on all threaded pneumatic connection

Pen mark all fasteners to show finalised



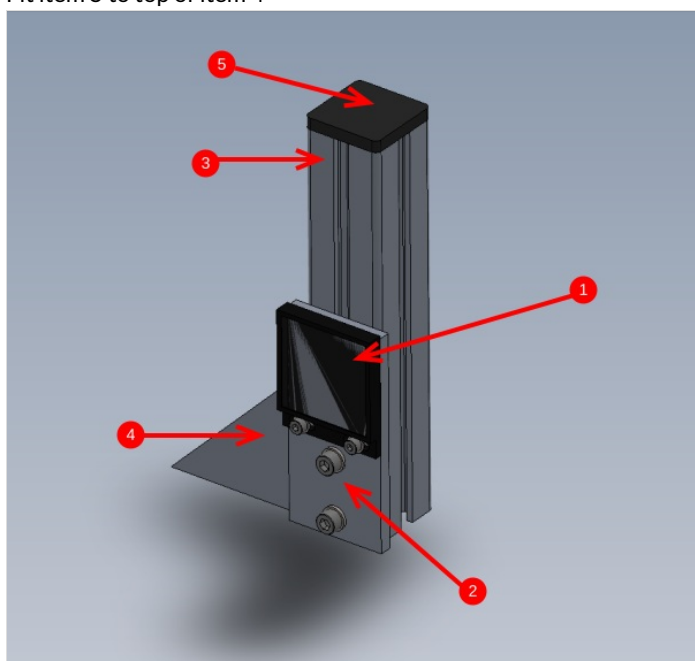
Step 2 - Assemble reflector assembly

Assemble 1 onto 2 using M4 x 10 pan heads and M4 A Form washers

Fix item 2 to 3 using M6 D nuts and M6 x 16 socket caps and M6 A form washers

Fit item 4 Using 2 off M8 x 16 socket caps, 2 off M8 motor plate washers and 2 off M8 d Nuts

Fit item 5 to top of item 4



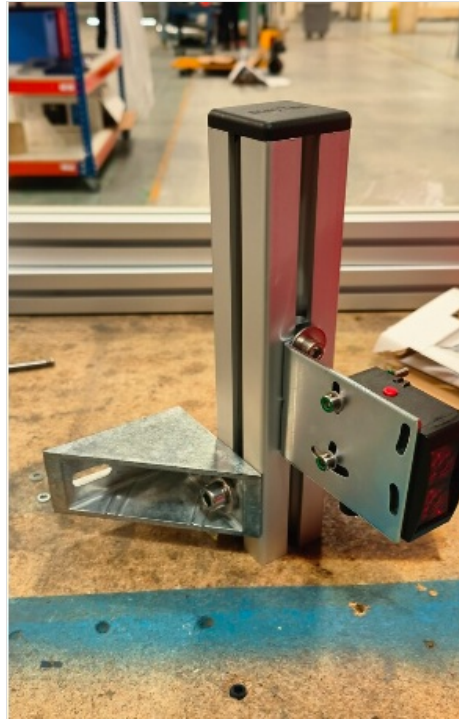
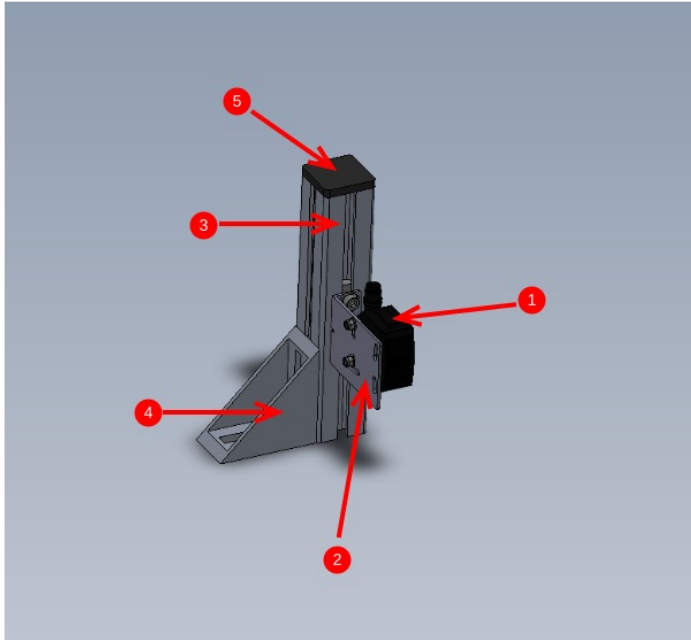
Step 3 - Assembly Sensor assembly

Fit Item 1 to item 2 using 2 off M4 x 40 socket caps, 4 off M4 A Form washers and 2 off M4 Nyloc nuts

Fit item 2 to item 3 using 2 off M6 x 12 socket caps, 2 off M6 A Form washers and 2 off M6 d nuts

Attach item 4 to item 3 using M8 x 16 socket cap, M8 motor plate washer and M8 D nut

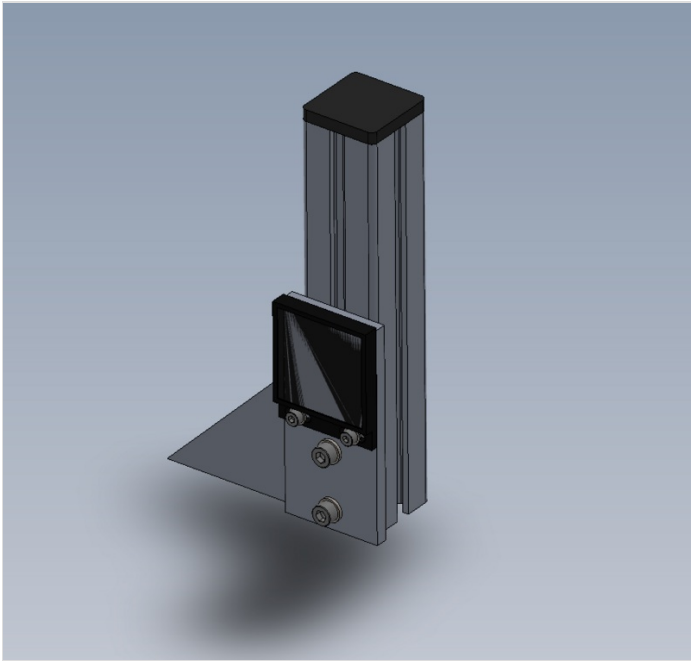
Fit item 5 to item 4



Step 4 - Attach reflector assembly

Attach reflector assembly to front buffer beam . Use 2 off M8 D Nuts, 2 off M8 x 16 socket caps and 2 off M8 motor plate washers

Please provide Details required for mounting position on buffer beam



Step 5 - Attach sensor assembly

Attach sensor assembly to rear buffer beam using 2 off M8 D Nuts, 2 off M8 x 16 socket caps, and 2 off M8 motor plate washers

Please provide Details required for mounting position

