


R0015086 Pneumatic connections

Instructions for adding pneumatic circuits to main frame

 Difficulty **Medium**

 Duration **8 hour(s)**

Contents

Introduction

Step 1 - Unless otherwise stated

Step 2 - Y154 Loader Wheel

Step 3 - Y157 Roller beds

Step 4 - Y375 Blowers

Step 5 - Cabinet Pneumatic connections

Step 6 - Mains supply 12mm blue

Comments

Introduction

Tools Required

Standard spanner set
Standard Hex key set
Pipe Cutters

Part Required

P0000160 Fitting: Flow Controller In Line 6mm x 1
P0001023 Fitting: SMC 6mm mini Y x 2
P0001030 Fitting: SMC 6mm Equal Tee x 16
P0001053 8-6 reducer x 1P0001106 reducer 12-8 x 1
P0001107 12mm Y connector x 1
P0001108 Tee connector 12mm x 2

Step 1 - Unless otherwise stated

Use loctite 243 on all fasteners

Use loctite 572 on all threaded pneumatic connection

Pen mark all fasteners to show finalised



Step 2 - Y154 Loader Wheel

Pictures please

6mm black air pipe

1542 to base of cylinder runs to out port of regulator on electrical cabinet

1541 connects to nose of cylinder, add P0000160 close to cylinder, then run connection to port 2 on valve bank for Y154 connection
Connect IN port of regulator with 1541 and connect to port 4 on valve bank

6mm blue airpipe

Connect check valve fitting to main blue 12mm feed line using 12- 8 reducer, 8-6 reducer and 12mm Y connector

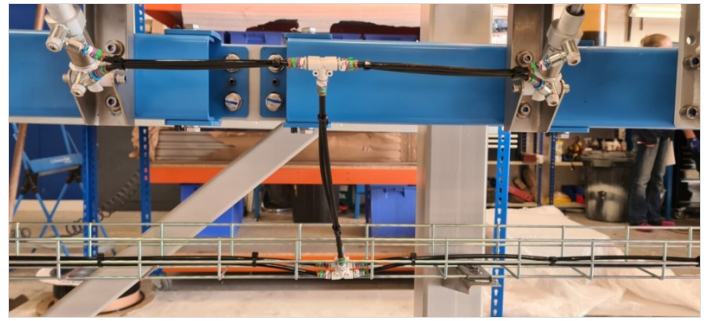


Step 3 - Y157 Roller beds

Pictures please

1579 Connects from nose of cylinder to port 4 on valve bank

1571 connects to base of cylinder and port 2 of valve bank



Step 4 - Y375 Blowers

Pictures please

3759 connect to port 2 of pilot valve

Connect to blowers. Must have P0000160 flow regulator fitted close to blower points

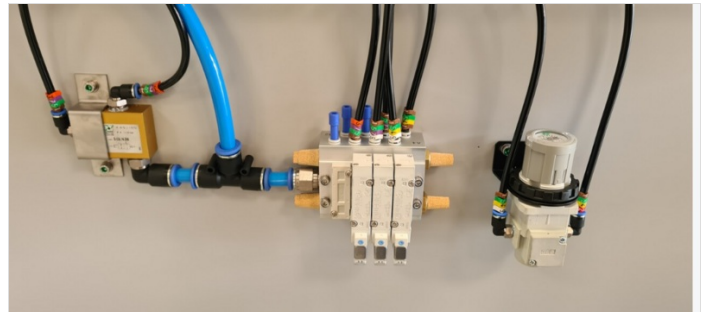
Step 5 - Cabinet Pneumatic connections

pilot valve

Port 1 connected to 12mm ring main

Port 2 3759 connects to blower

Port 12 3759 connects to port 4 on valve bank



Step 6 - Mains supply 12mm blue

12mm blue pipe runs from cabinet supply to Y near connection for load wheel 6mm. 12mm carries on ready to plug into M/C

