

Toggle navigation



Search

- [Categories](#)
- [Manuals](#)
- [Items](#)
- [Answers](#)

Create a page

**Permission Denied**

**Oops !** You do not have permission to edit this page because your are not log in. To edit this page [create an account](#) or [log in](#).

- [English](#)
- - [Log in](#)

# R0015066 Bench Assemble Saw Motor Assembly

- [Page](#)
- [Comments](#)0
- [History](#)

Star

0

I did It

0

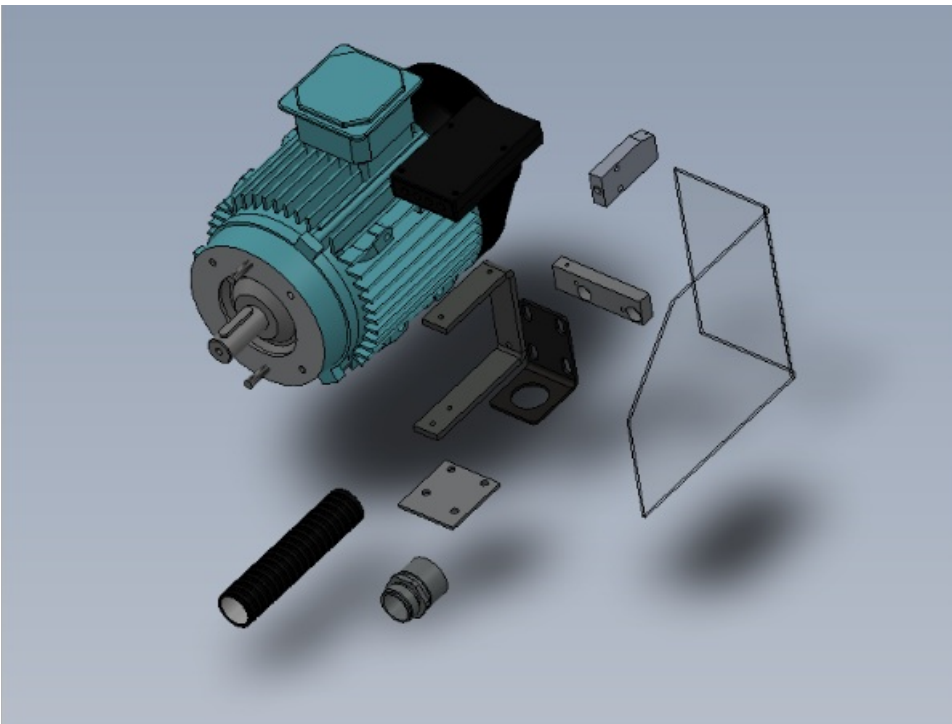
- [...](#)
  - [Export PDF](#)
  - [Embed this tutorial](#)
  - [Generate a QR code](#)

This page contains [changes](#) which are not marked for translation.

instructions to assemble motor assembly



Author [Gareth Green](#) | [Last edit](#) 5/09/2024 by [Gareth Green](#) being drafted



Difficulty  
Medium  
Duration  
1 hour(s)

instructions to assemble motor assembly

Difficulty  
Medium  
Duration  
1 hour(s)

## Contents

- [1 Introduction](#)
- [2 Step 1 - Unless otherwise stated](#)
- [3 Step 2 - Cut chute Flap](#)
- [4 Step 3 - Assemble chute flap](#)
- [5 Step 4 - Prepare conduit](#)
- [6 Step 5 - Attach fixed end brackets](#)
- [7 Step 6 - Tap Holes in Motor R-L and L-R Machine positions](#)
- [8 Step 7 - Mount connection box R-L](#)
- [9 Step 8 - Mount connection box L-R](#)
- [10 Step 9 - Secure lid](#)
- [11 Step 10 - Orientate Motor box](#)
- [12 Step 11 - Attach conduit mount](#)
- [13 Step 12 - Attach conduit to motor](#)
- [14 Comments](#)

## Introduction

### Tool Required

Standard hex key set  
Standard spanner set  
Cutting disc  
Standard hand taps

### Parts Required

A0000013 32mm Conduit Adaptor x 1  
A0000027 Flexible Conduit Ø32mm x 1  
D0004079 Saw Motor (Modified Front Flange) x 1  
D0004437 Motor Conduit Bracket x 2  
D0004835 Flex conduit plate x 1  
D0004997 Connector Support Block (5360) x 1  
D0004999 Reed Switch Terminal Box x 1  
D0005219 Turntable Nozzle x 1  
D0008198 Chute Flap x 1  
H0008200 Chute Flap Bracket x 1  
P0000295 Elbow Adaptor 6mm - 1/8 BSPT (Metal type) x 1

## Step 1 - Unless otherwise stated

All bolts to have Loctite 243 adhesive applied unless otherwise stated

All Threaded Pneumatic connections to have Loctite 570 applied

All bolts to be pen marked once adhesive applied and correct tension added



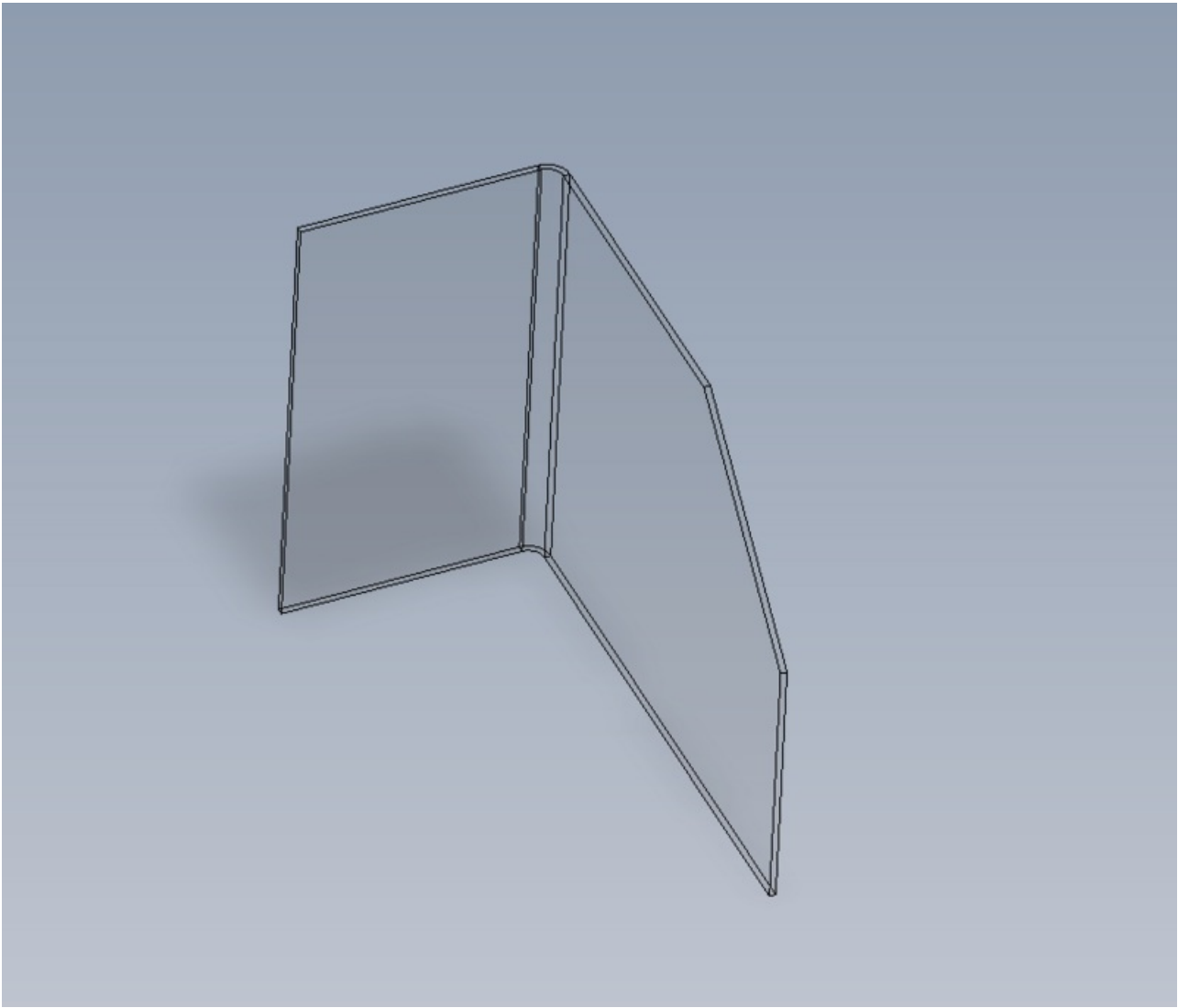


## Step 2 - Cut chute Flap

Use jig to cut safety flap

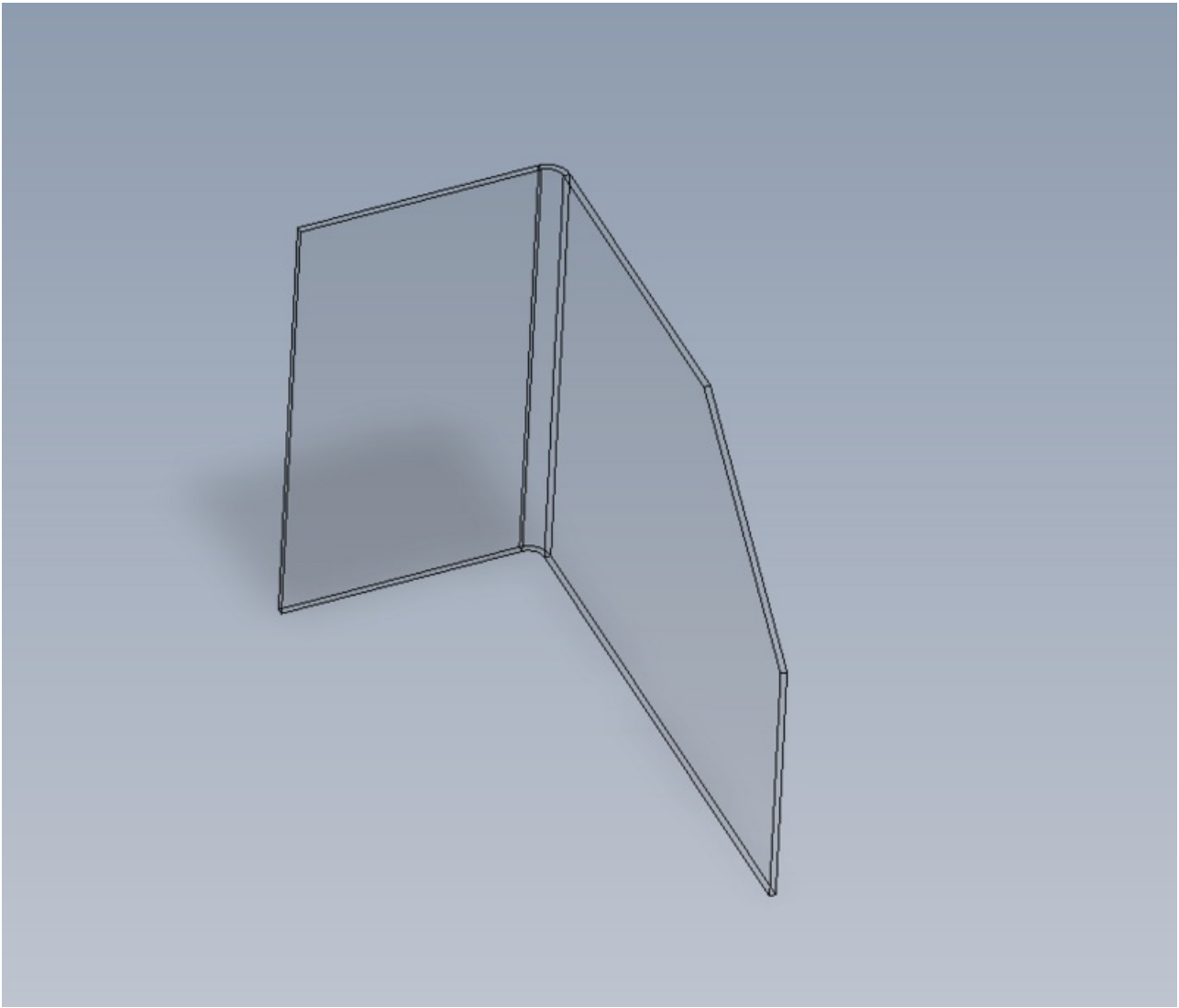
Remove additional 8mm from bottom of cut piece as shown once cut

(Jig requires amending to new correct size -8mm)









1.





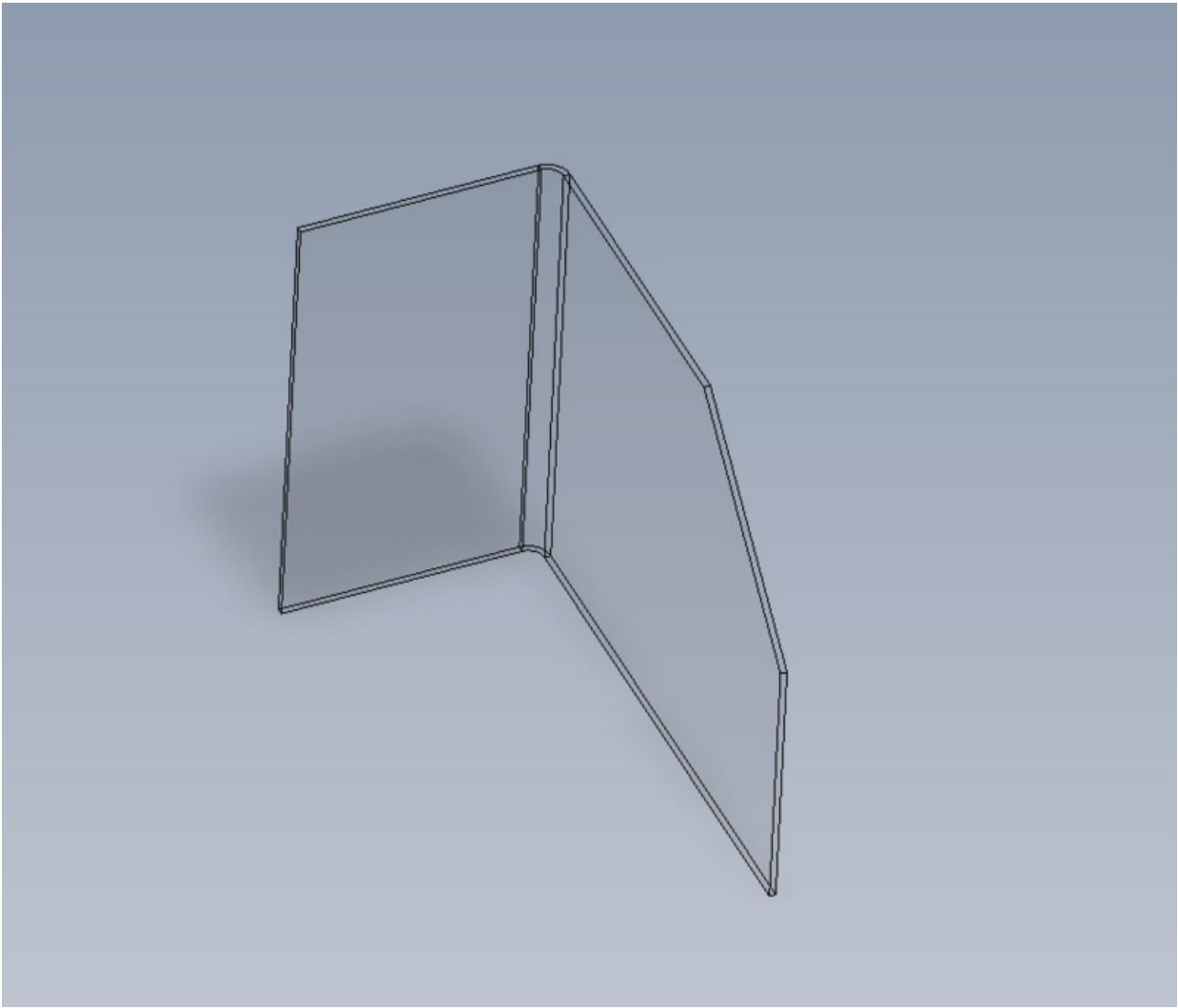
2.



3.



4.







### Step 3 - Assemble chute flap

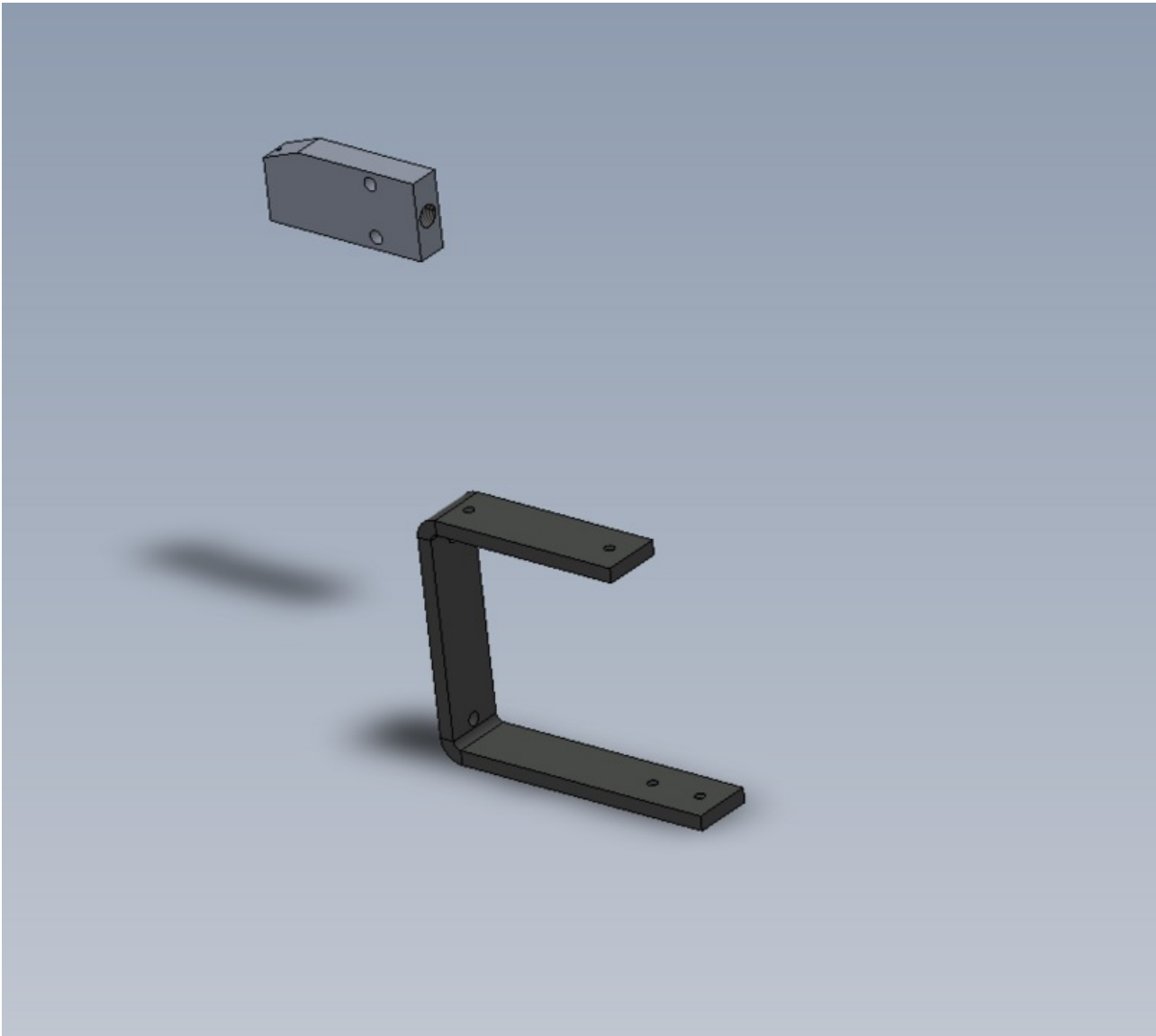
1 tap holes in chute bracket

2 Orientated pre cut flap onto bracket orientated as shown. Mark 4 off holes and drill to 6.8mm . Mount to bracket using M5 x 10 socket caps 2 off and M5 penny washer 2 off

Insert 2 off M5 x 20 socket caps and 2 off M5 a form washers into bracket ready for main frame fixing

3 Assemble blower . fit p0000295 fitting to D0005219 Turntable Nozzle

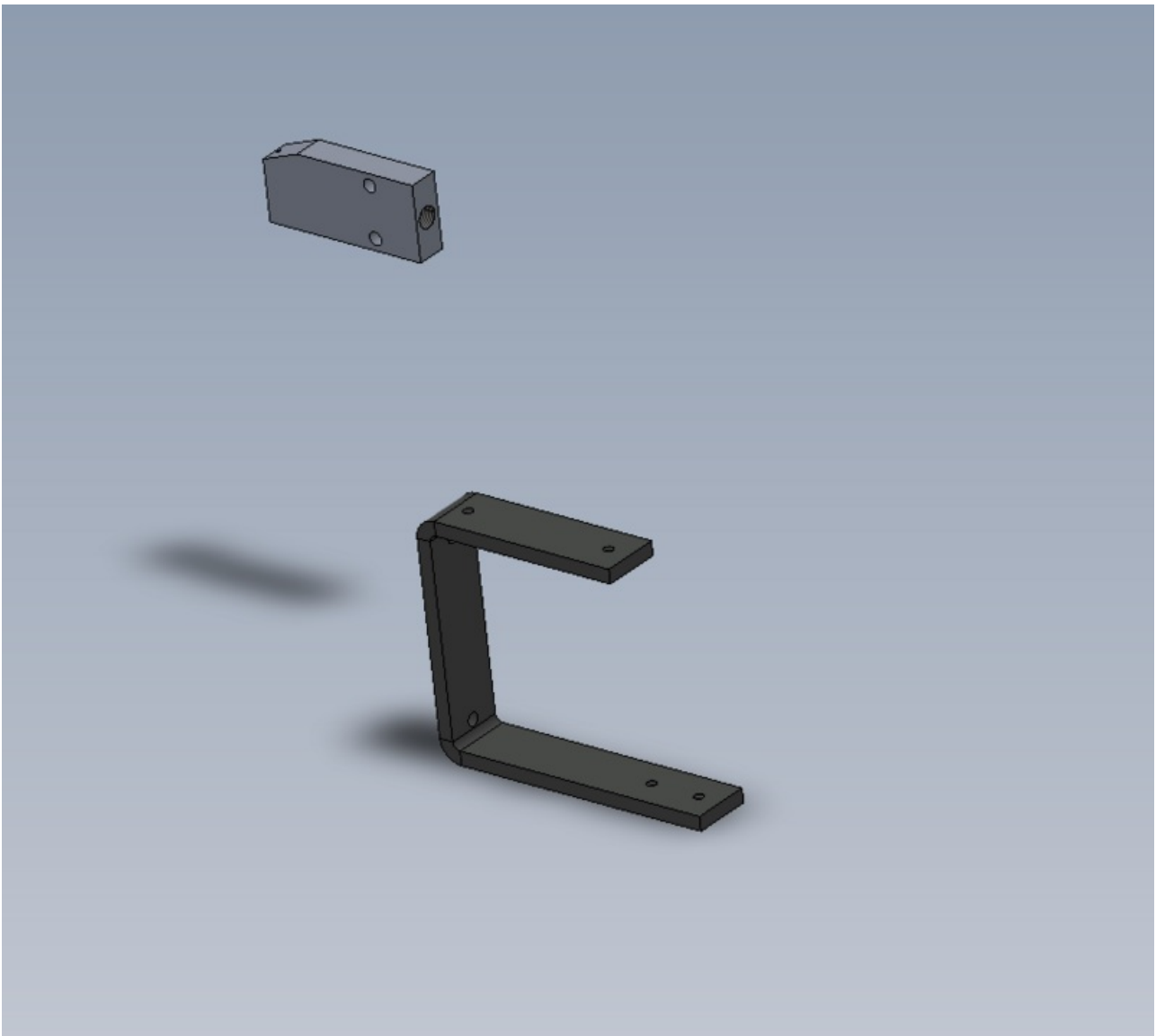
4 Mount blower to bracket using M5 x 20 socket cap 2 off and 2 off M5 A form washer 2 off











1.



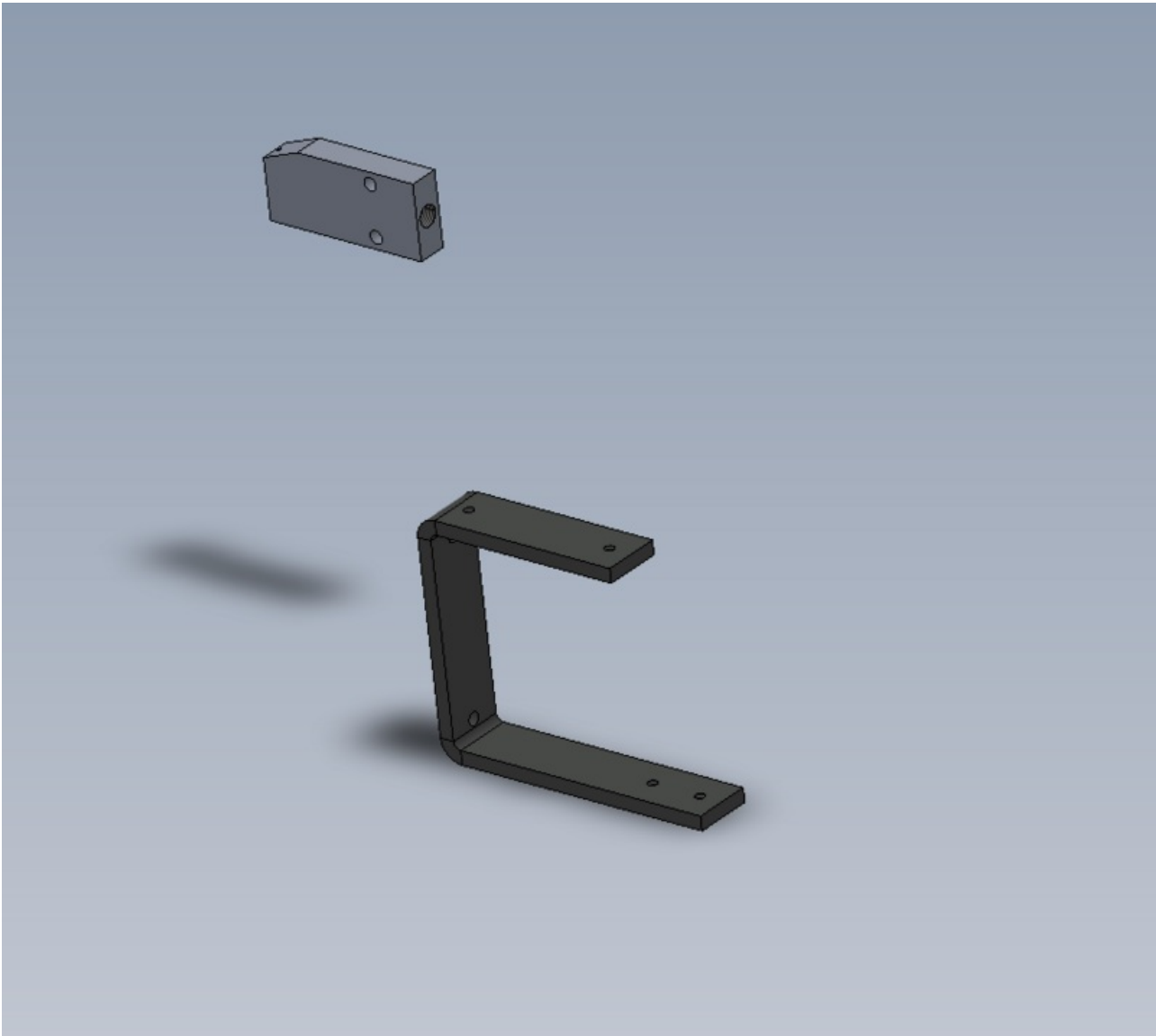
2.



3.



4.







## Step 4 - Prepare conduit

1 Cut length of 32mm conduit for saw motor at 850mm Long using disc grinder

2 Fit collar as shown . Ensure static variant has been issued, not rotating

3 Fit insert as shown

4 Tighten in vice

5 Repeat for other end















1.



2.



3.



4.



5.



6.









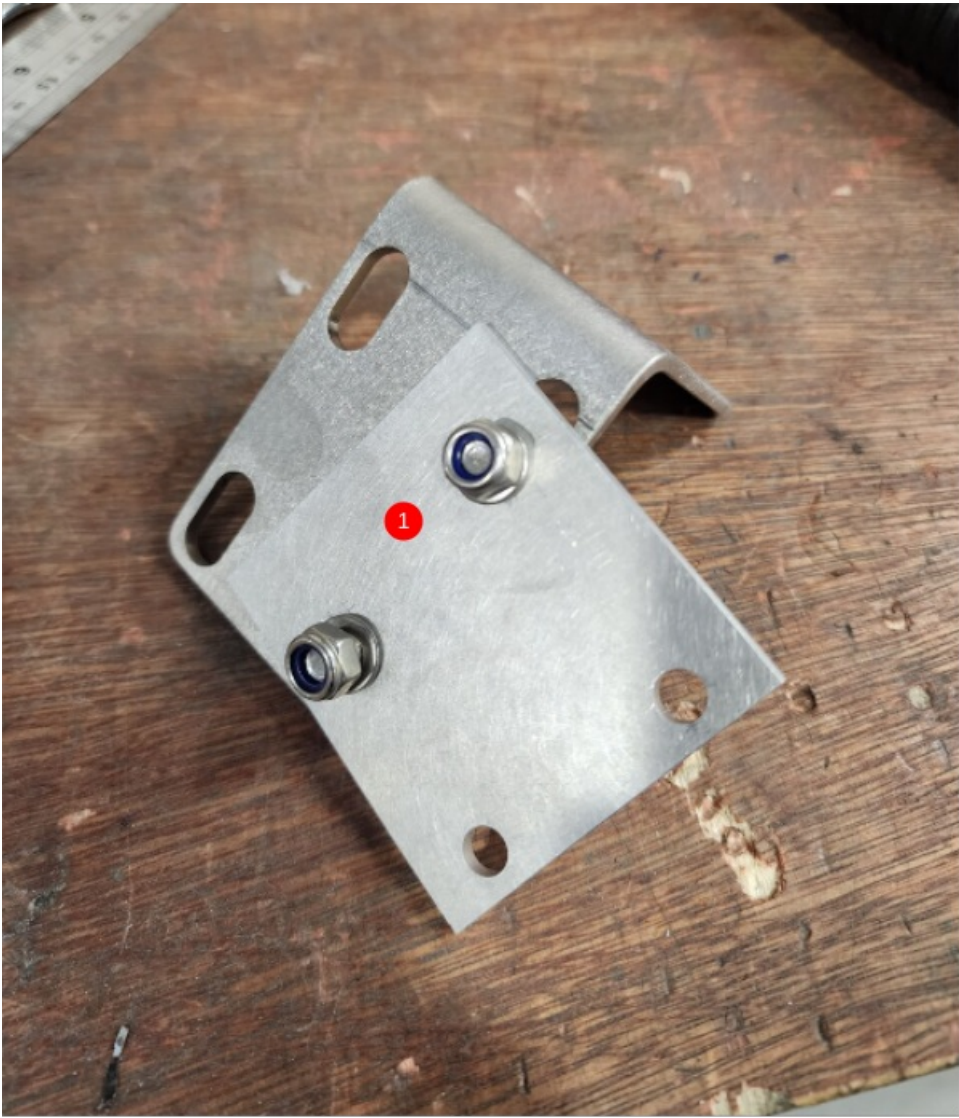


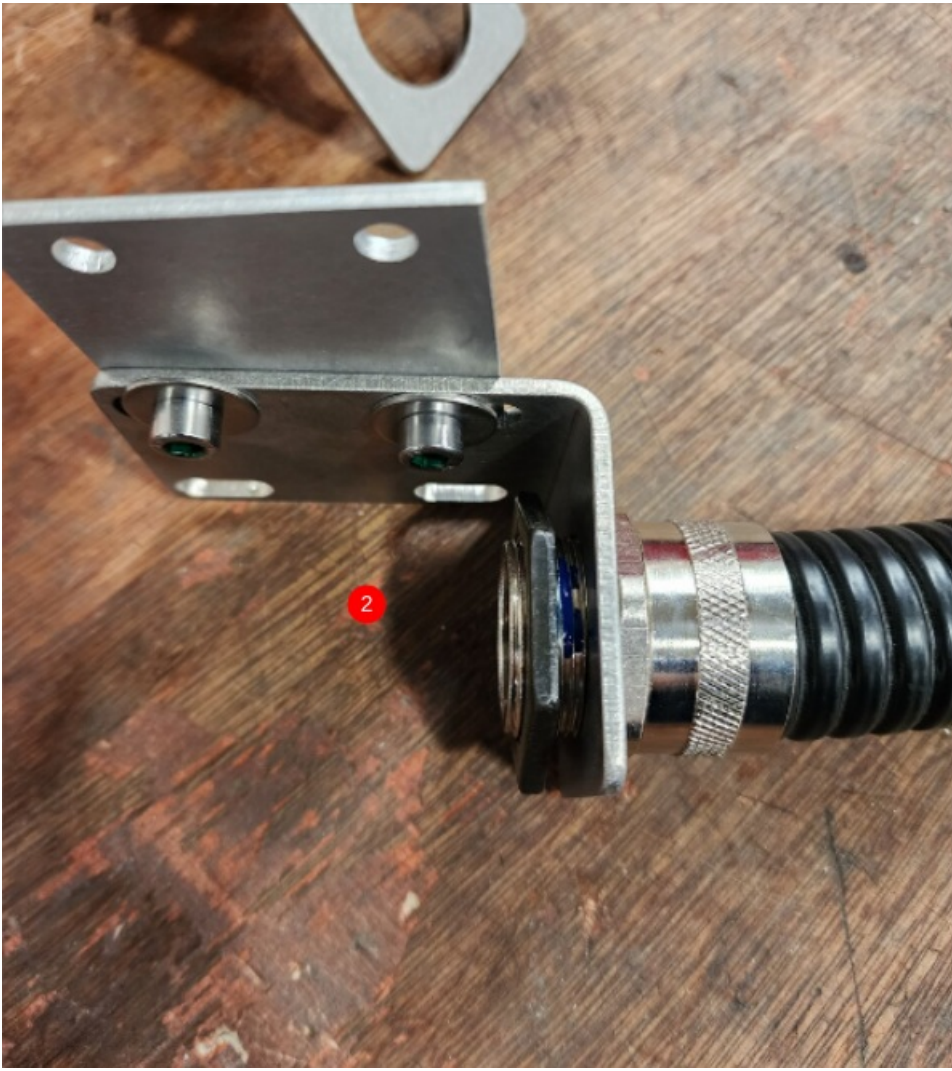


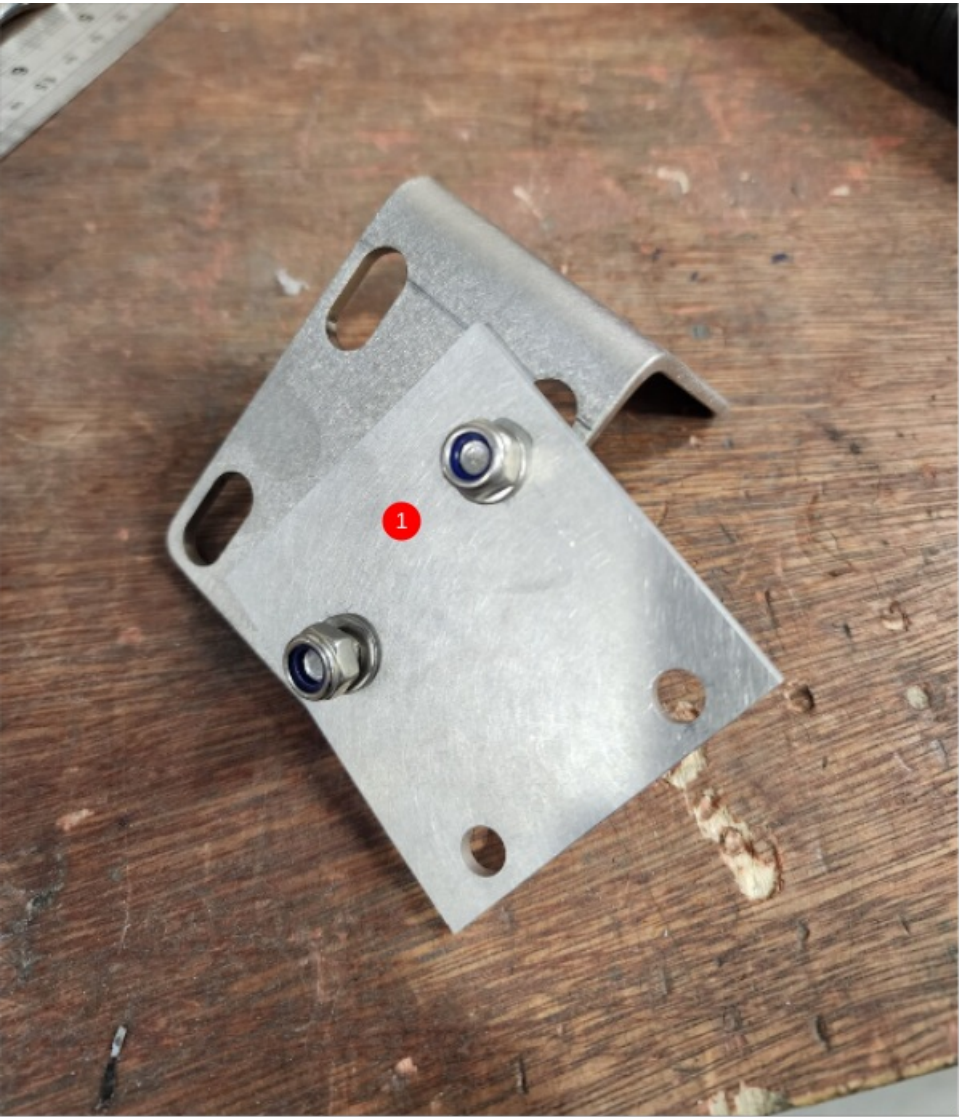
## Step 5 - Attach fixed end brackets

1 Assemble D0004437 Motor Conduit Bracket and D0004835 Flex conduit plate as shown using M6 x 16 socket cap 2 off, M6 A form washers 2 off , M6 Penny washer 2 off and M6 nyloc nut 2 off

2 Attach pre built anaconda as shown , using loctite 243 on fixing nut

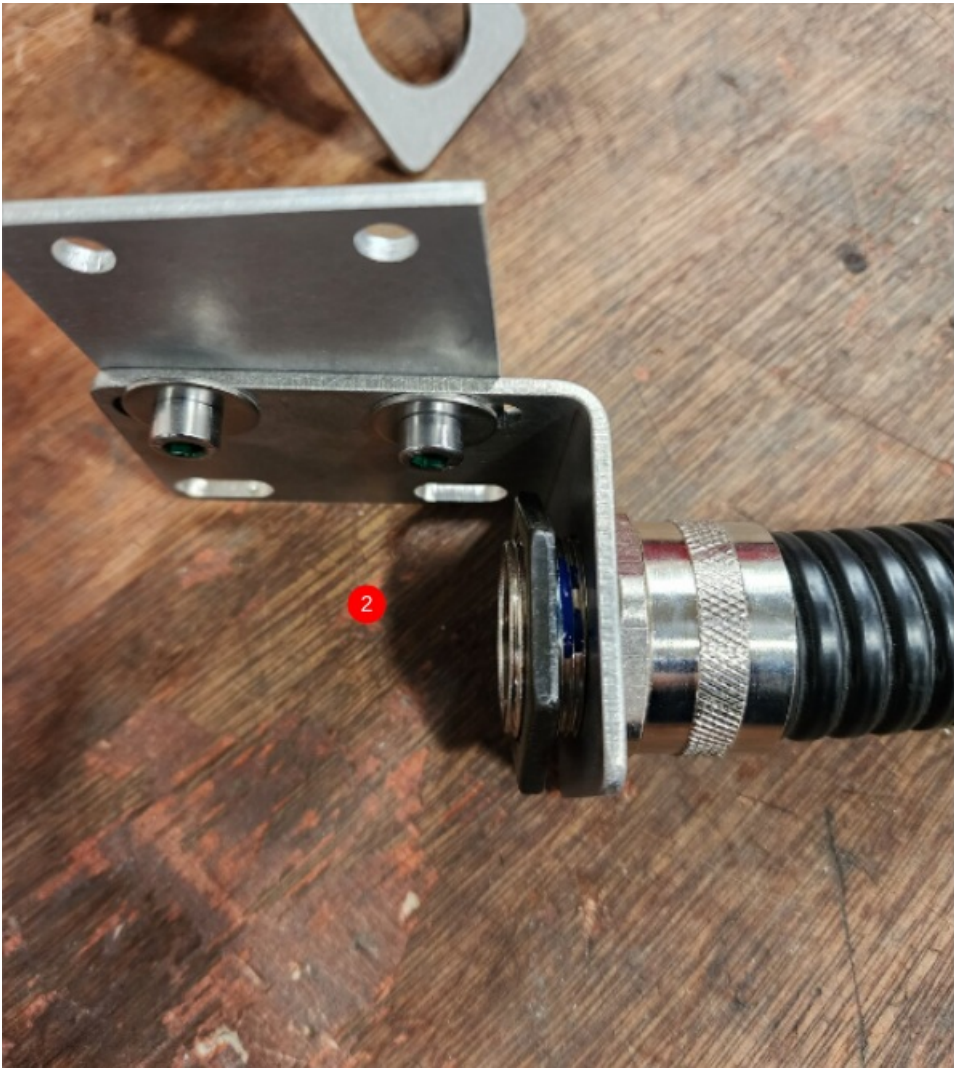






1.

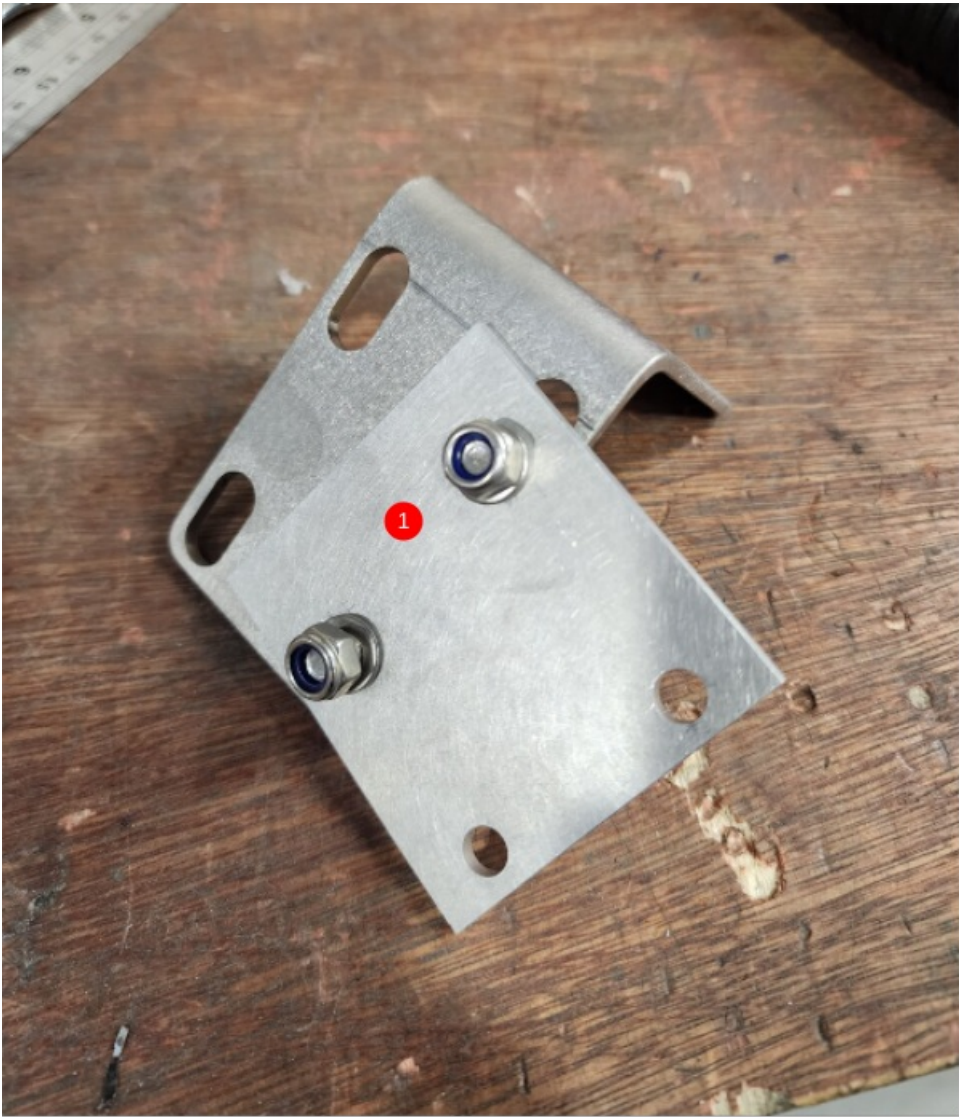


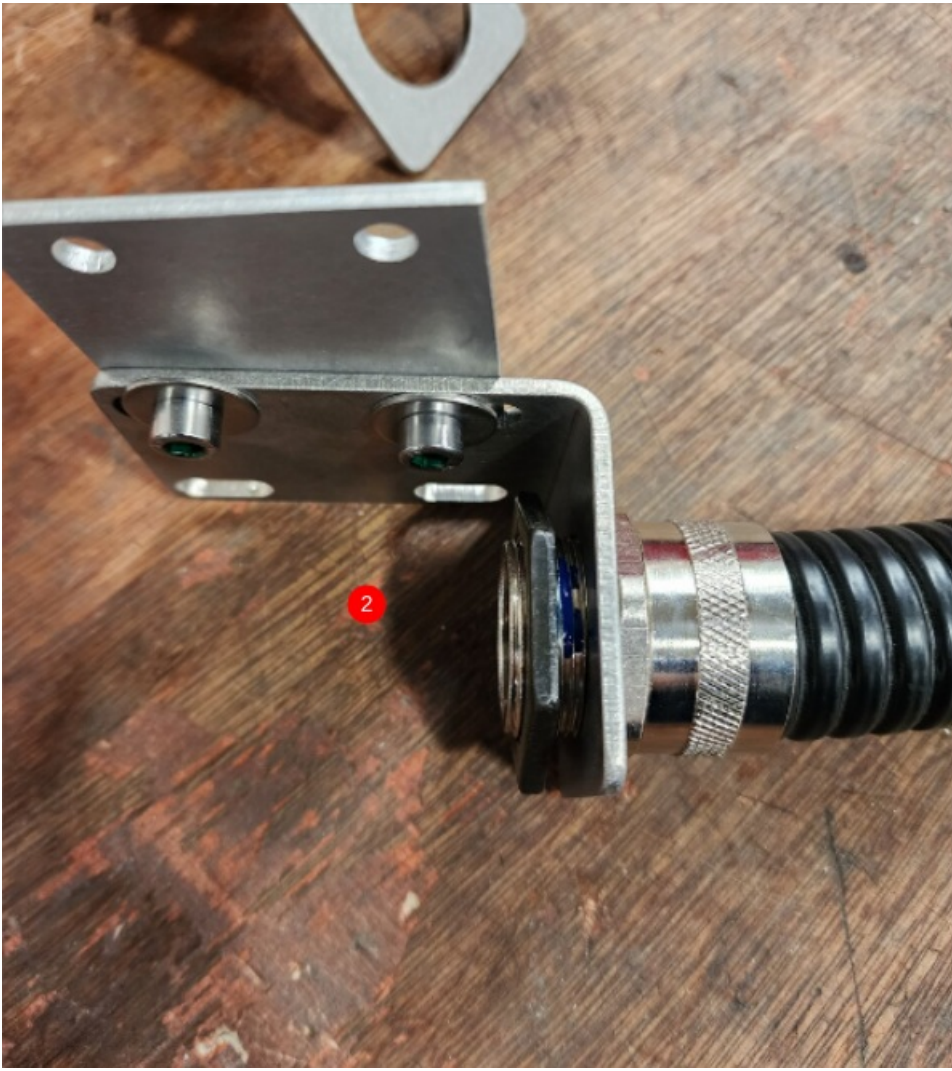


2.



3.

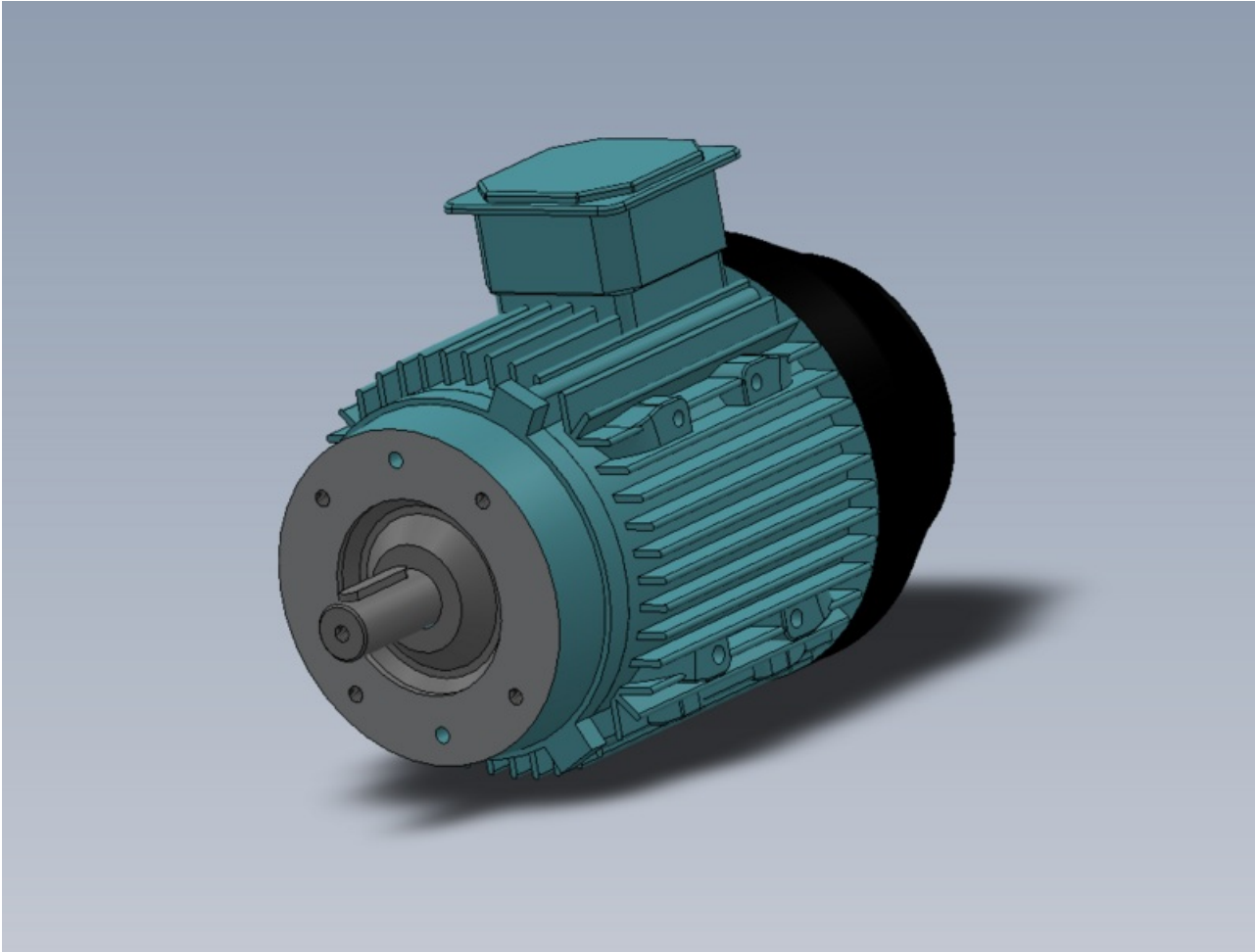




## Step 6 - Tap Holes in Motor R-L and L-R Machine positions

Ensure correct holes are tapped for correct hand of machine being assembled

Tap indicated holes in main motor to M8





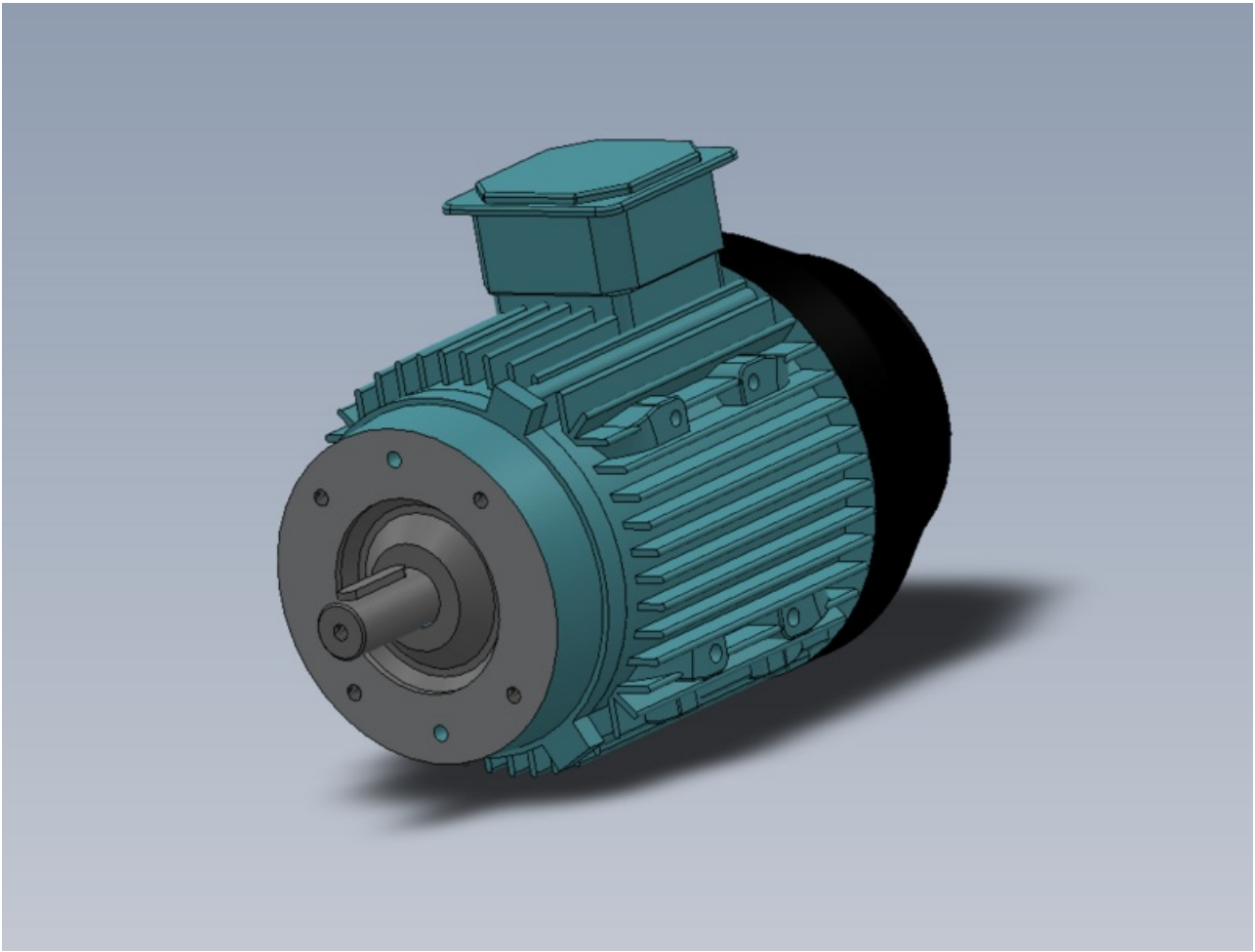
**R-L**











1.



2.



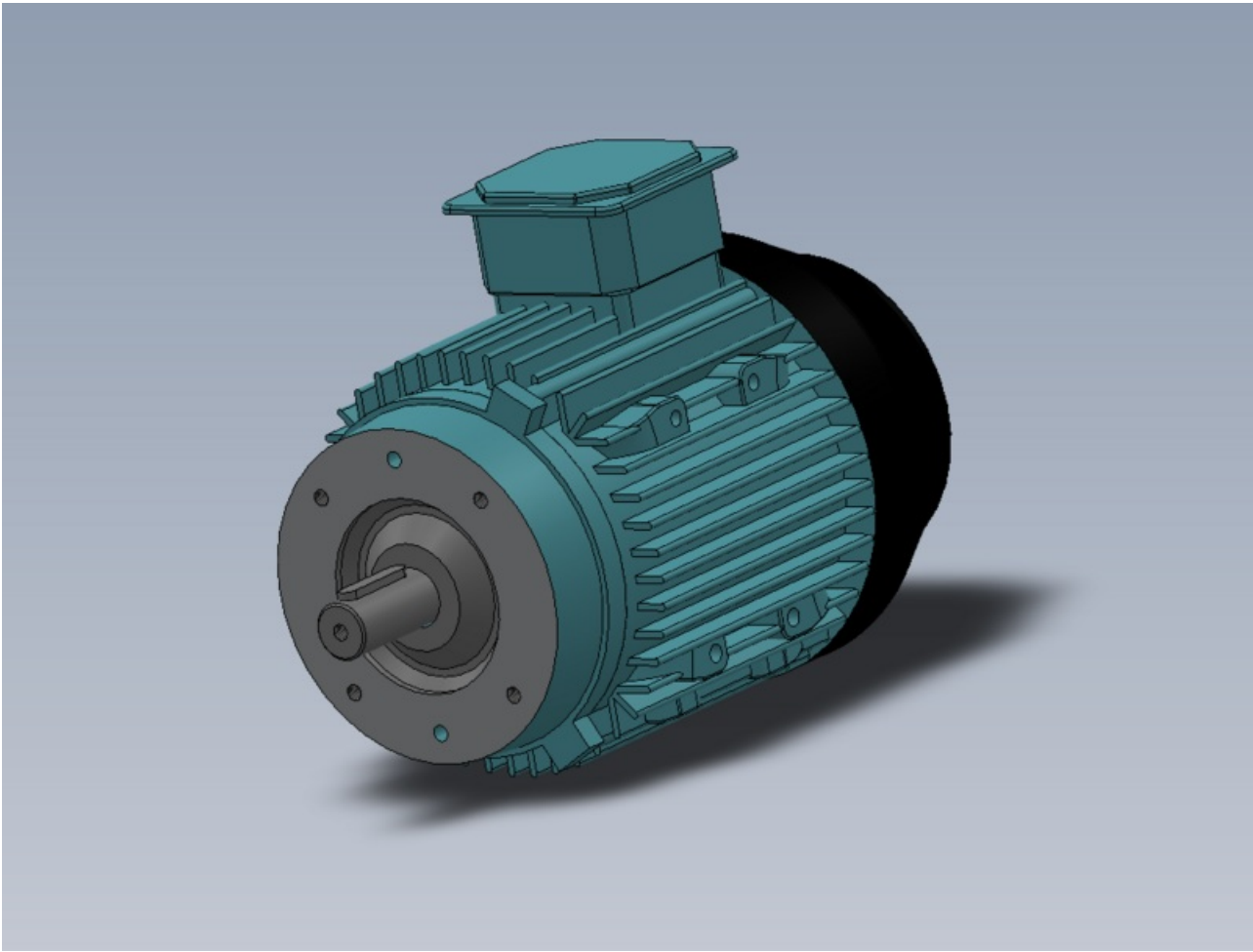
3.



4.



5.





**R-L**



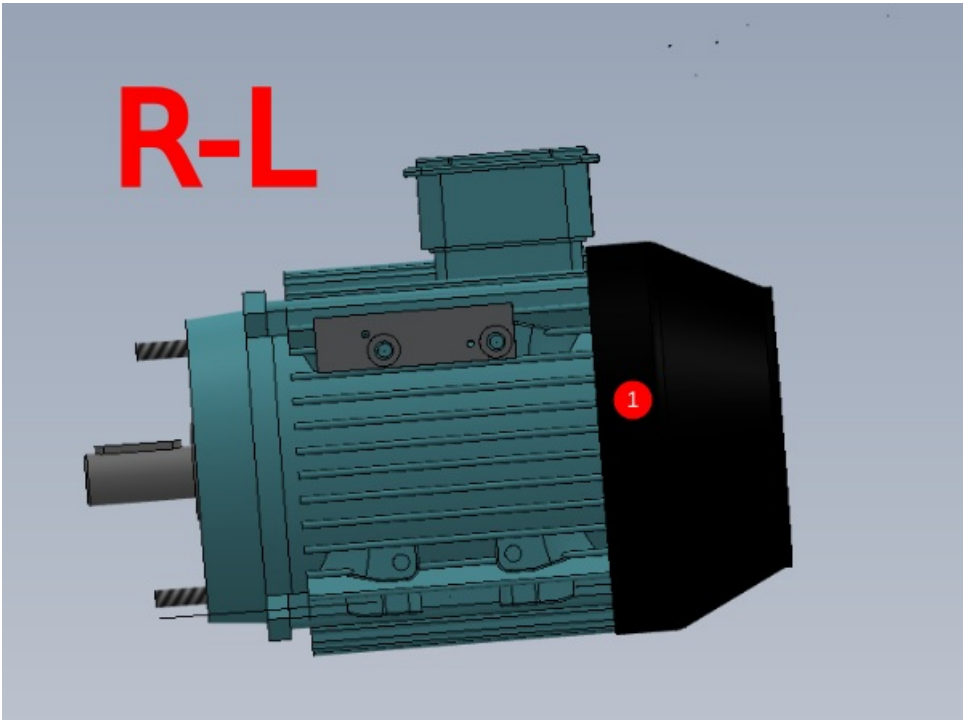
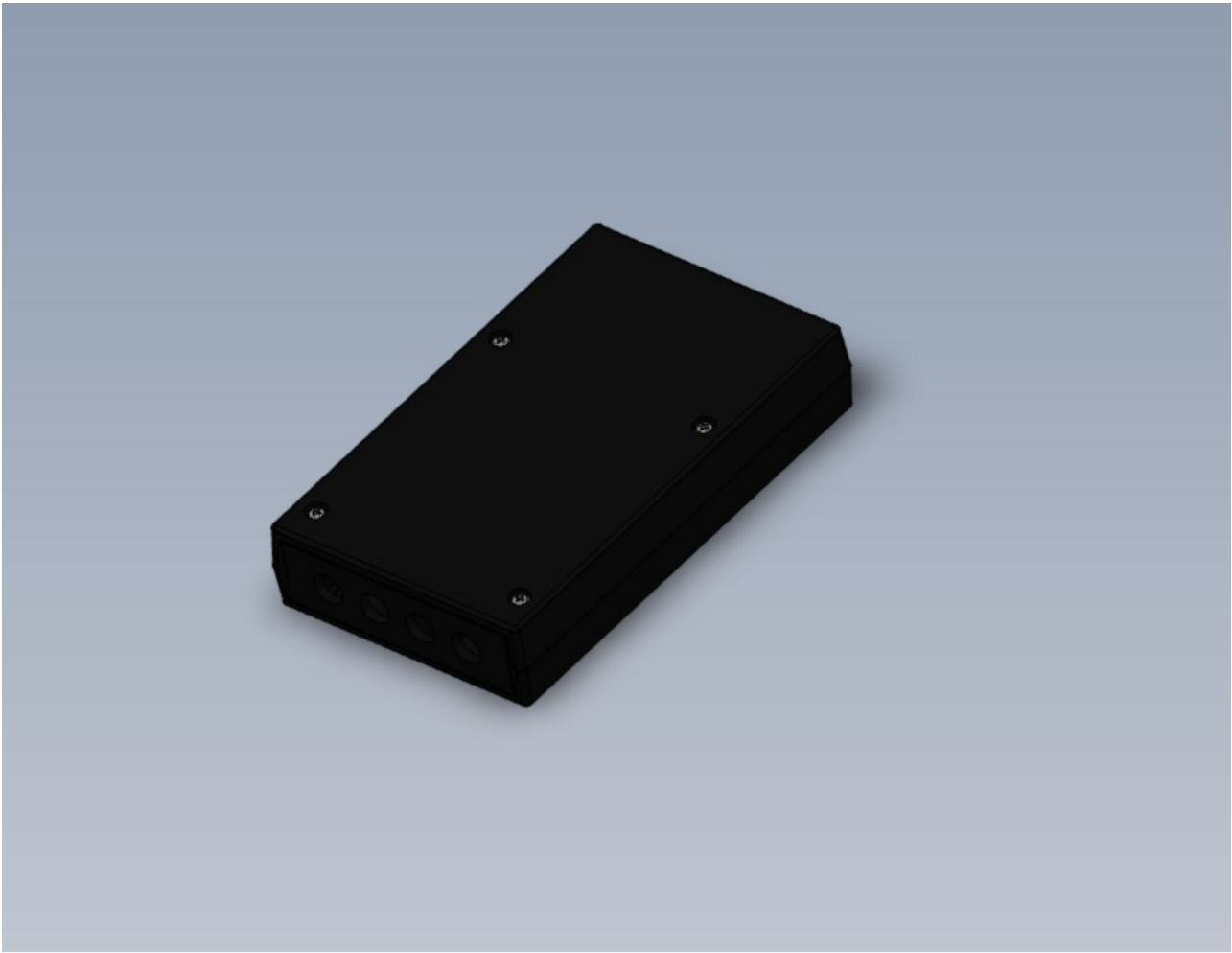






## Step 7 - Mount connection box R-L

- 1 Attach terminal mounting block to saw motor as shown using 2 off M8 x 16 socket caps
- 2 attach connection box using 2 of M4 x 12 button hex and 2 off M4 A form washers

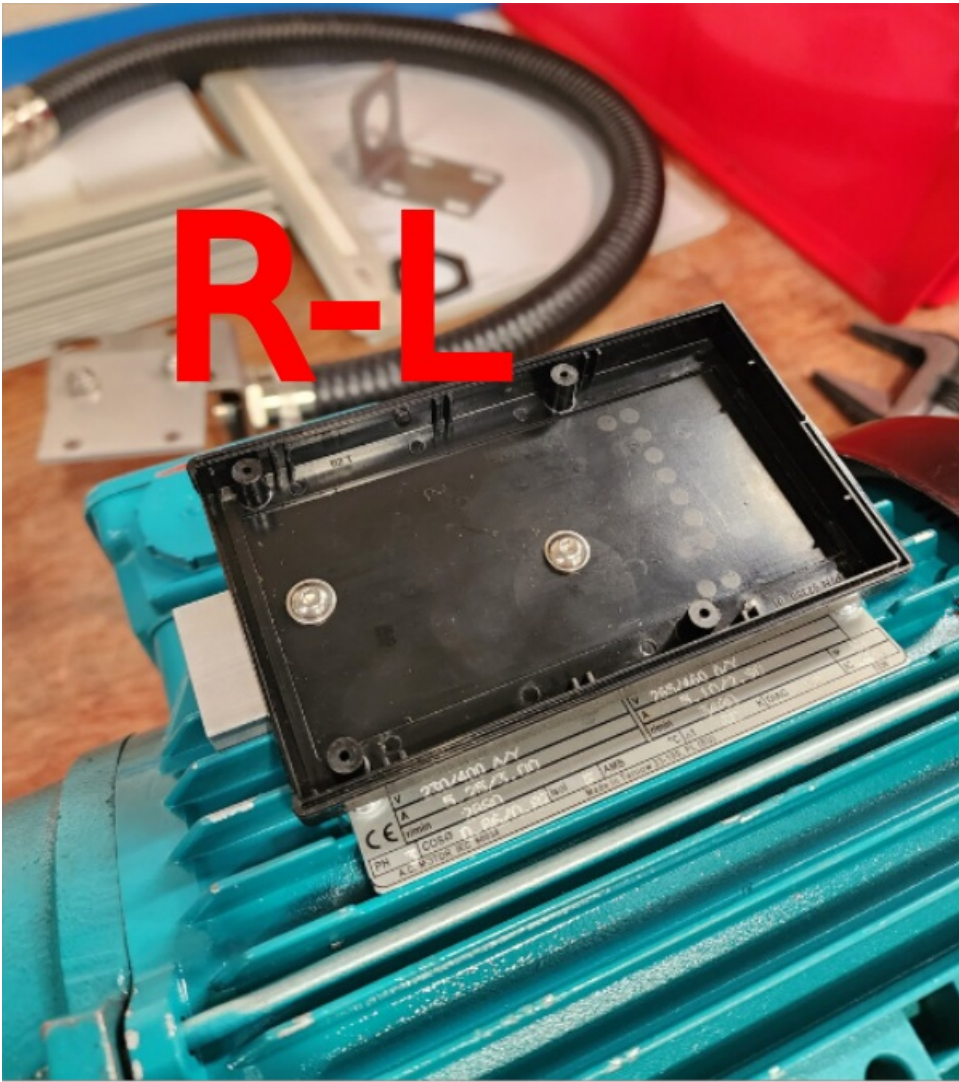


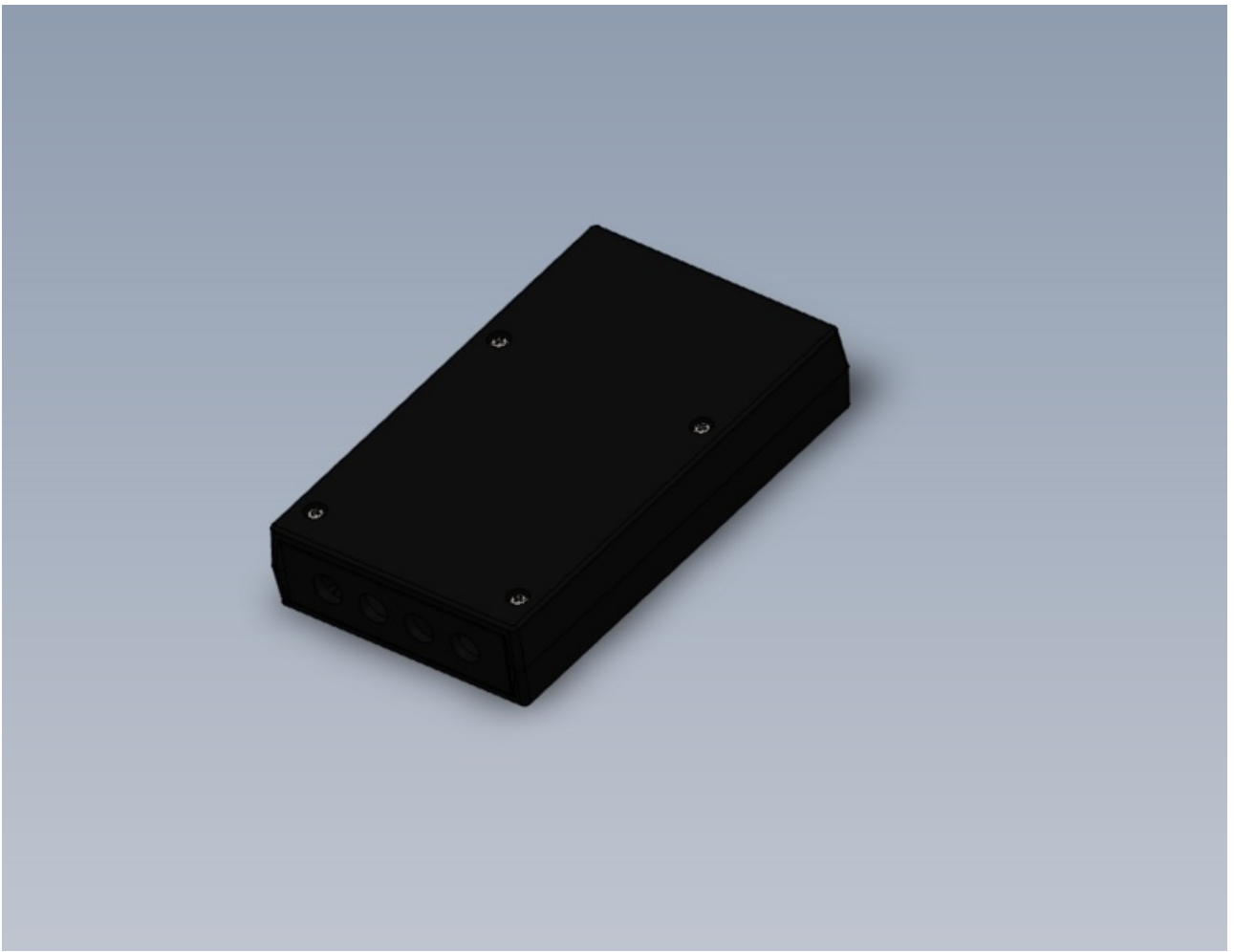
# R-L



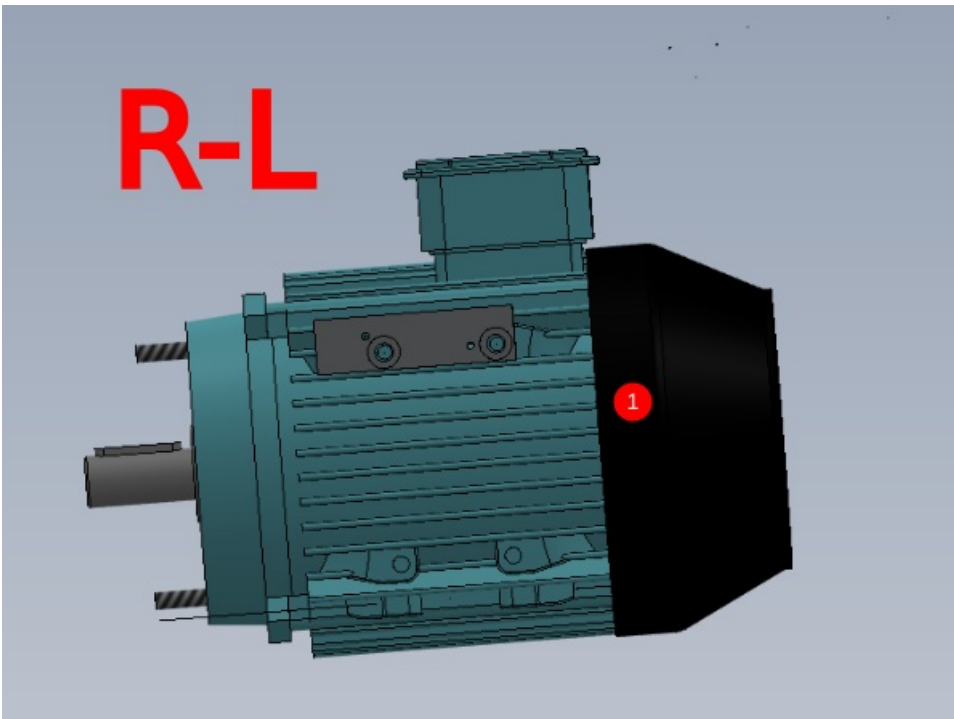
# R-L







1.



2.

# R-L



3.

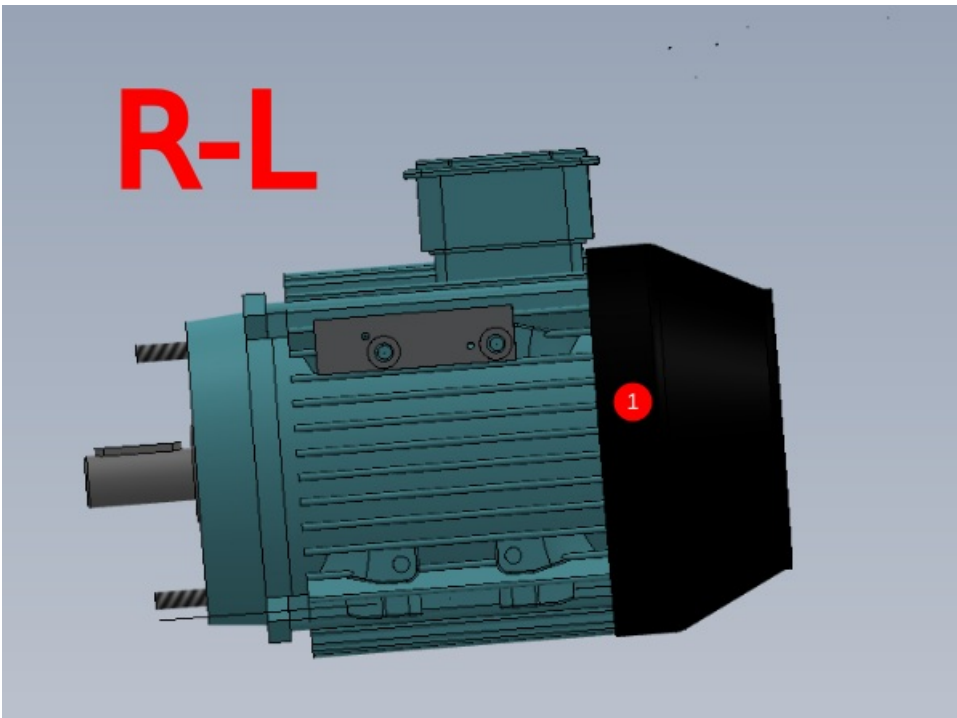
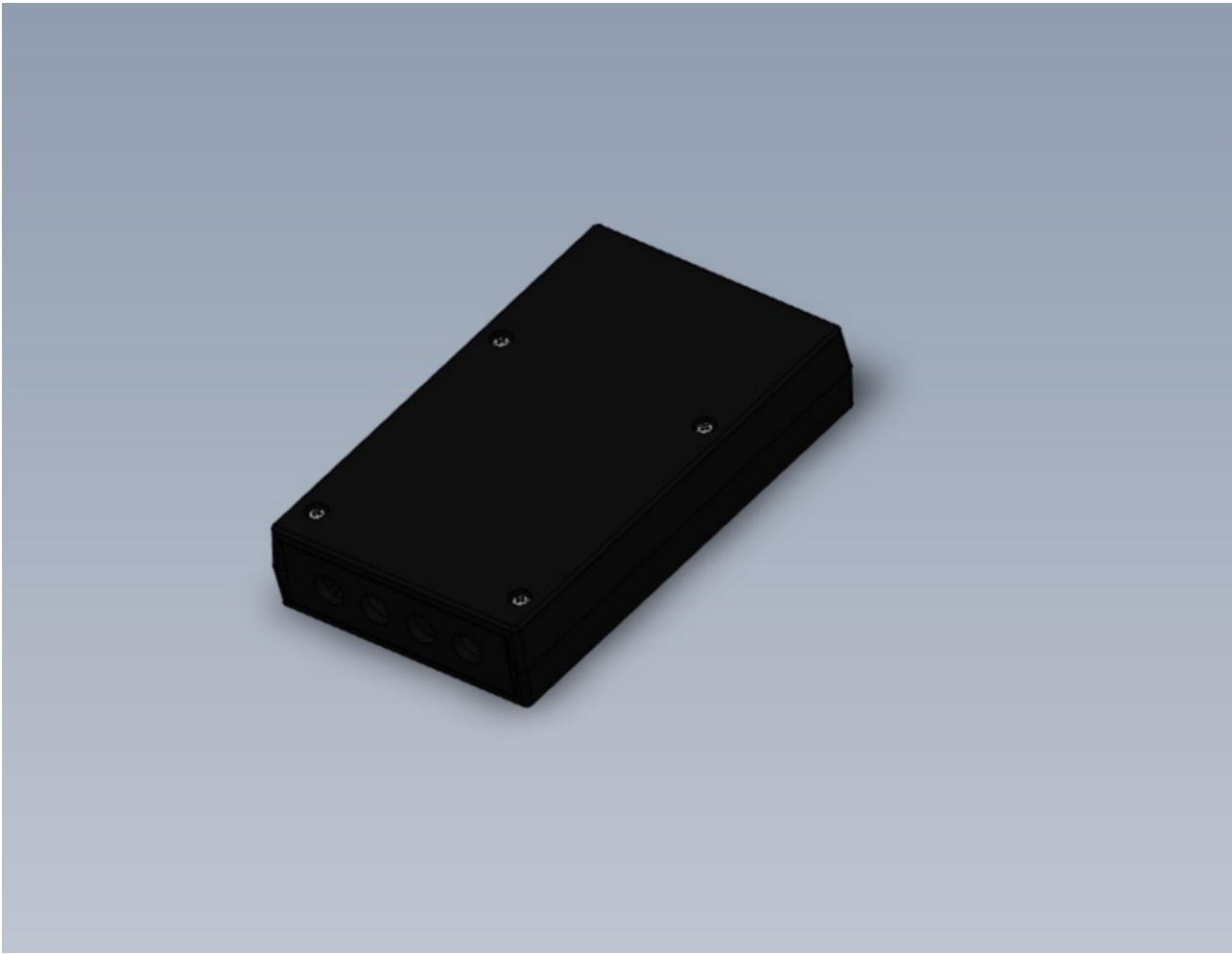




4.



5.

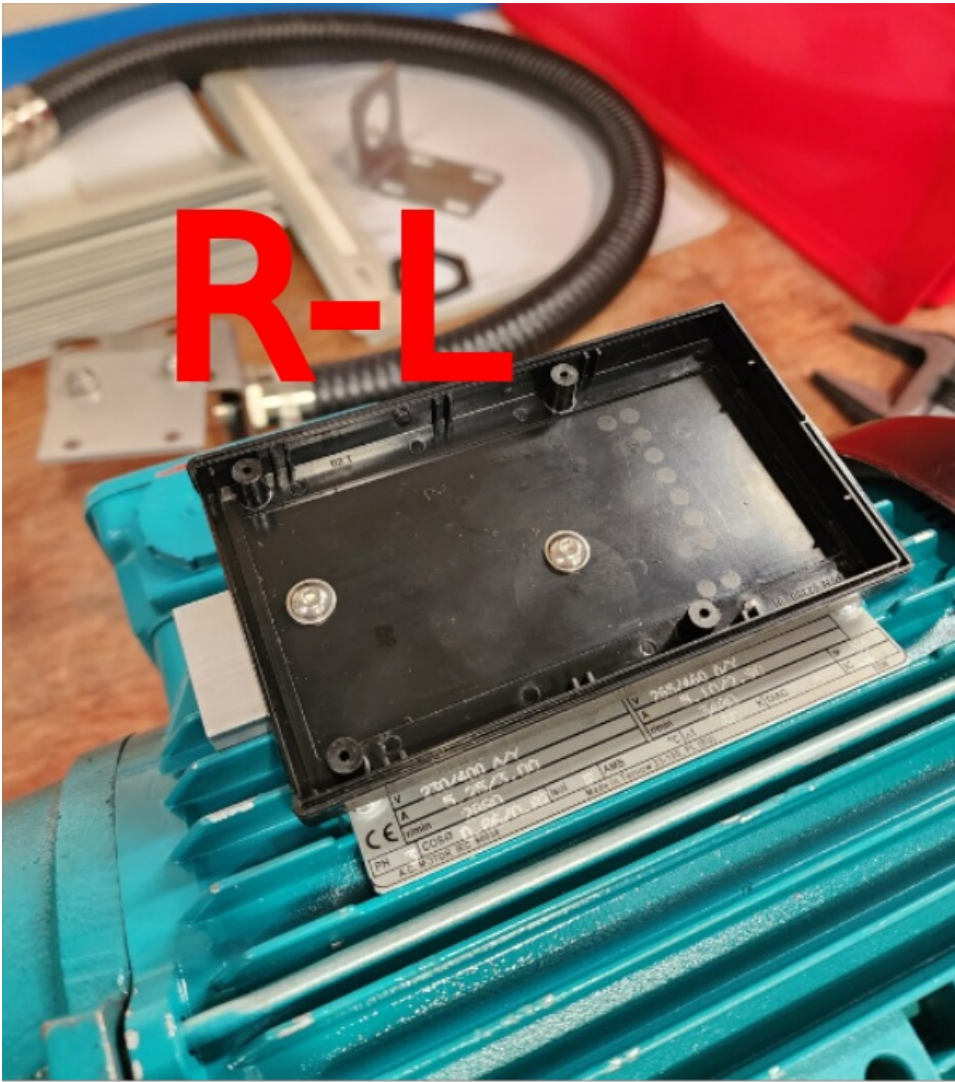


# R-L



# R-L





**Step 8 - Mount connection box L-R**



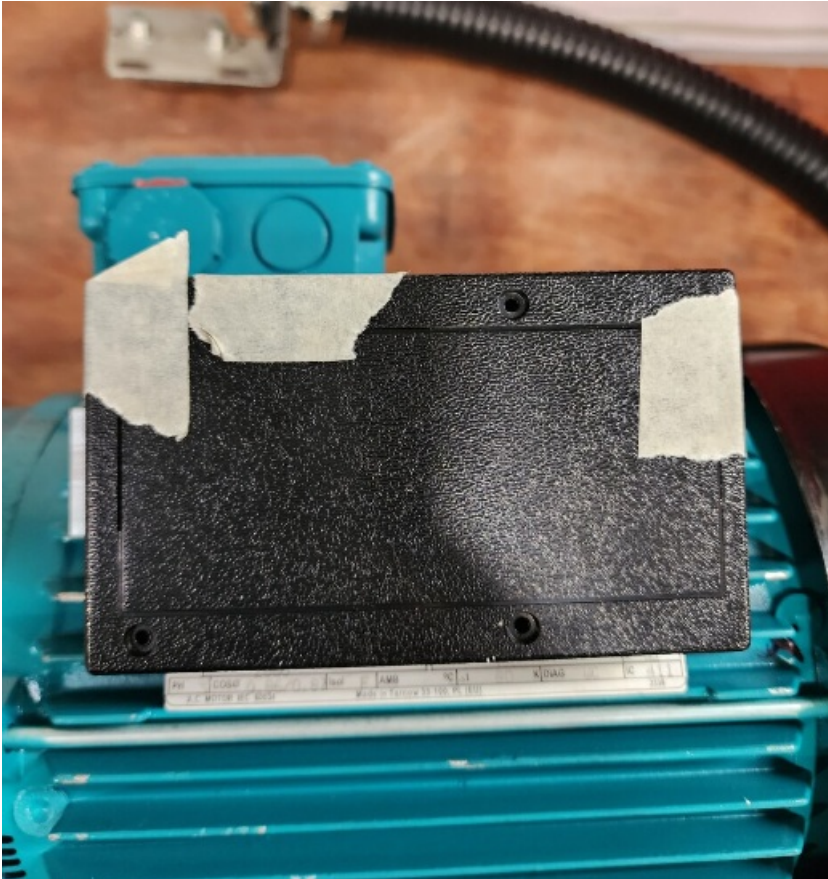
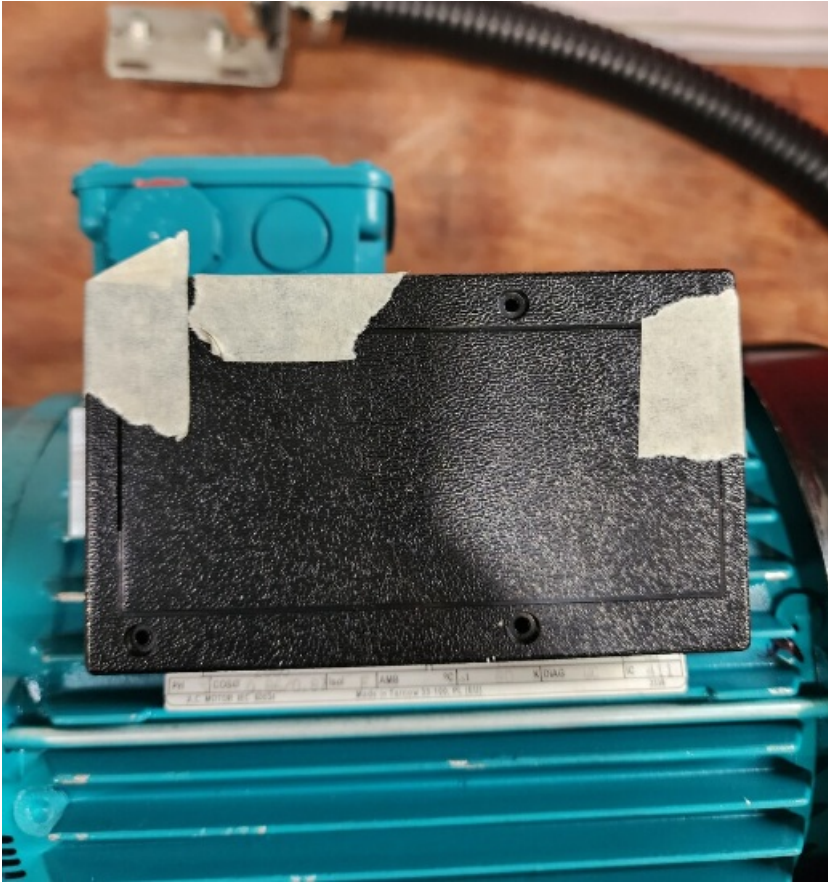


## Step 9 - Secure lid

Use making tape to secure lid, cable entry plate and screws safely together .



Do not use provided screws to fix lid



## Step 10 - Orientate Motor box

Check orientation of motor connection box shown

Glands should face black connection box

To rotate box

1 Remove lid

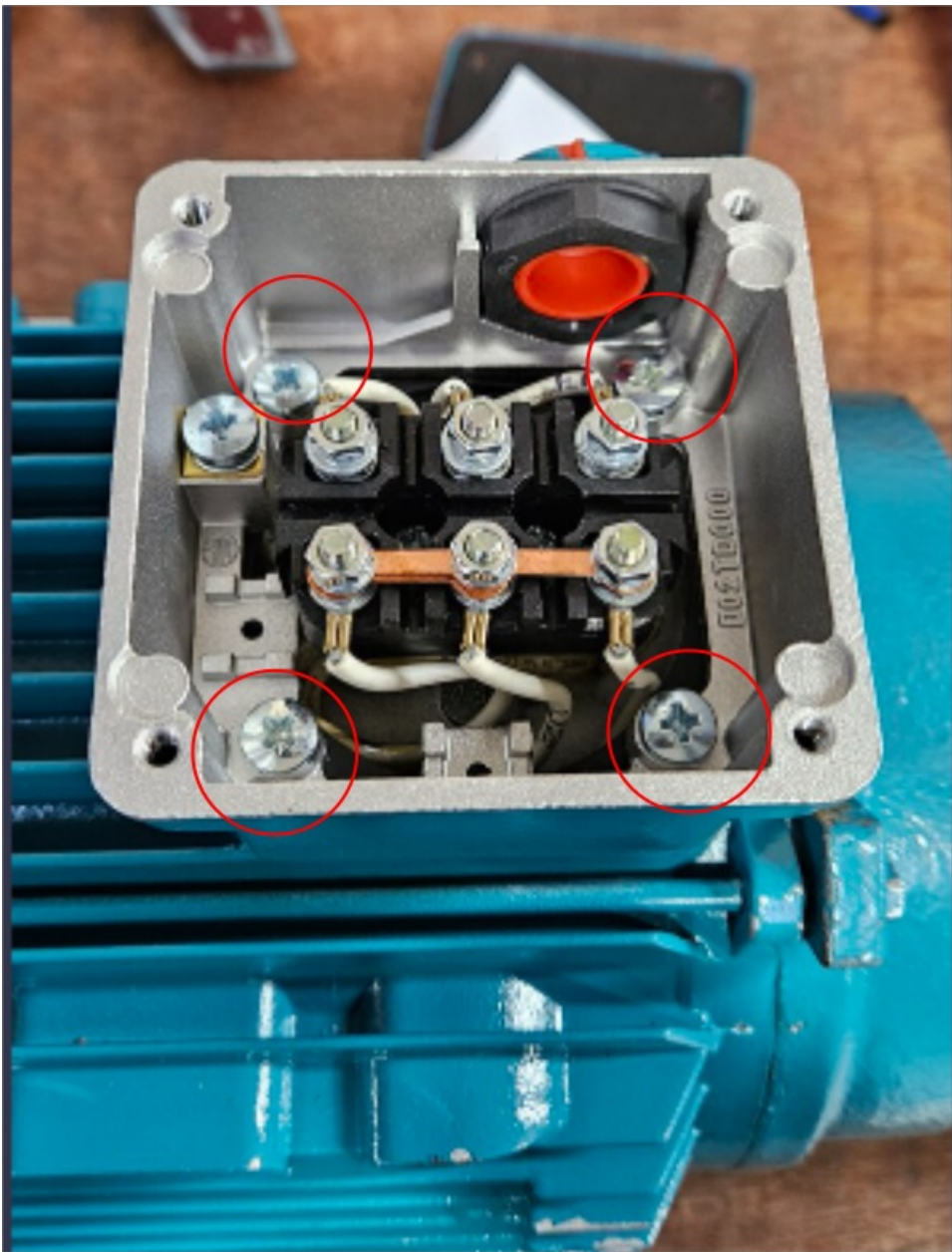
2 Remove 4 off screws shown

3 Rotate connection box

4 Refit 4 off screws

5 Refit lid

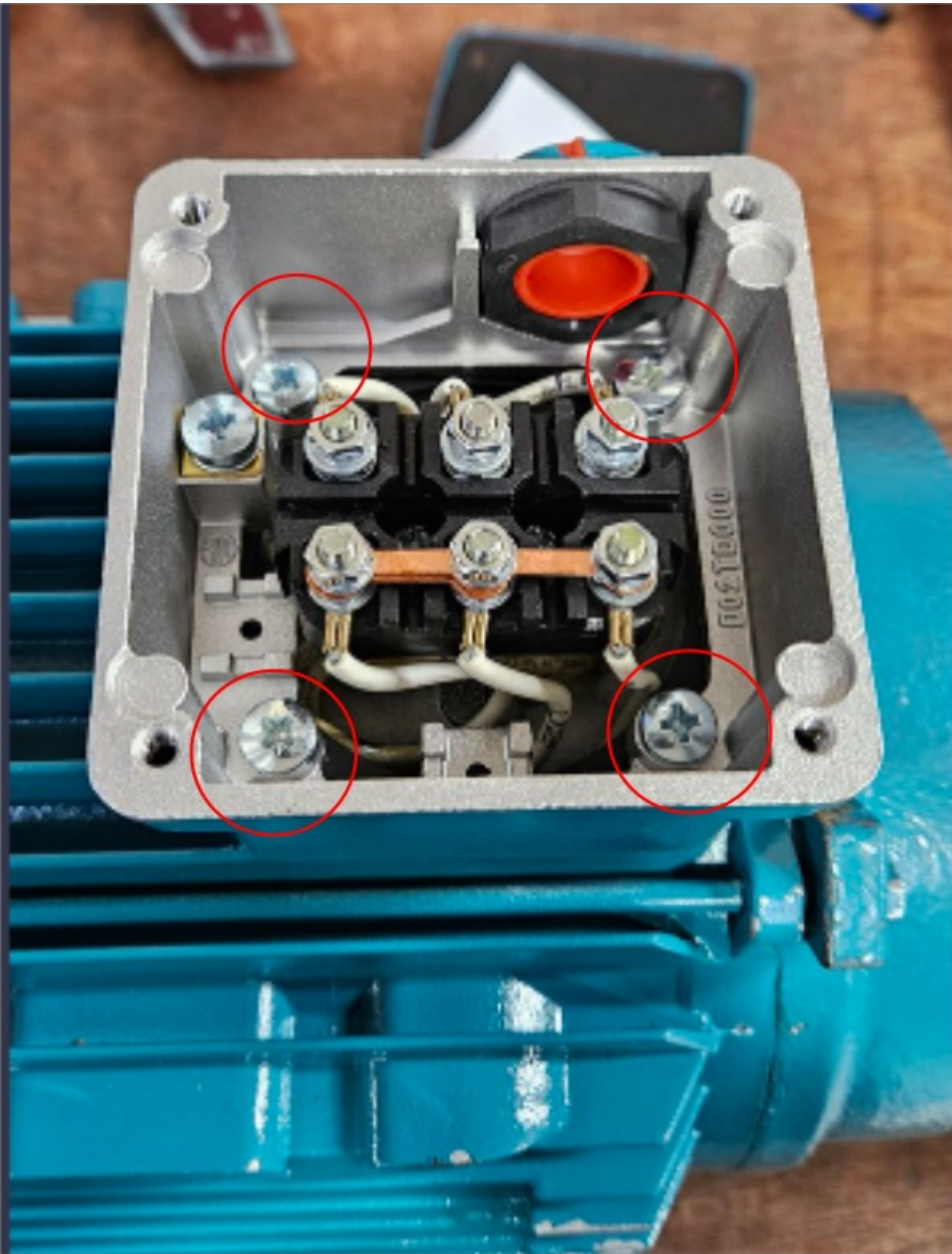




**These gland holes  
should face  
towards black  
connection box**

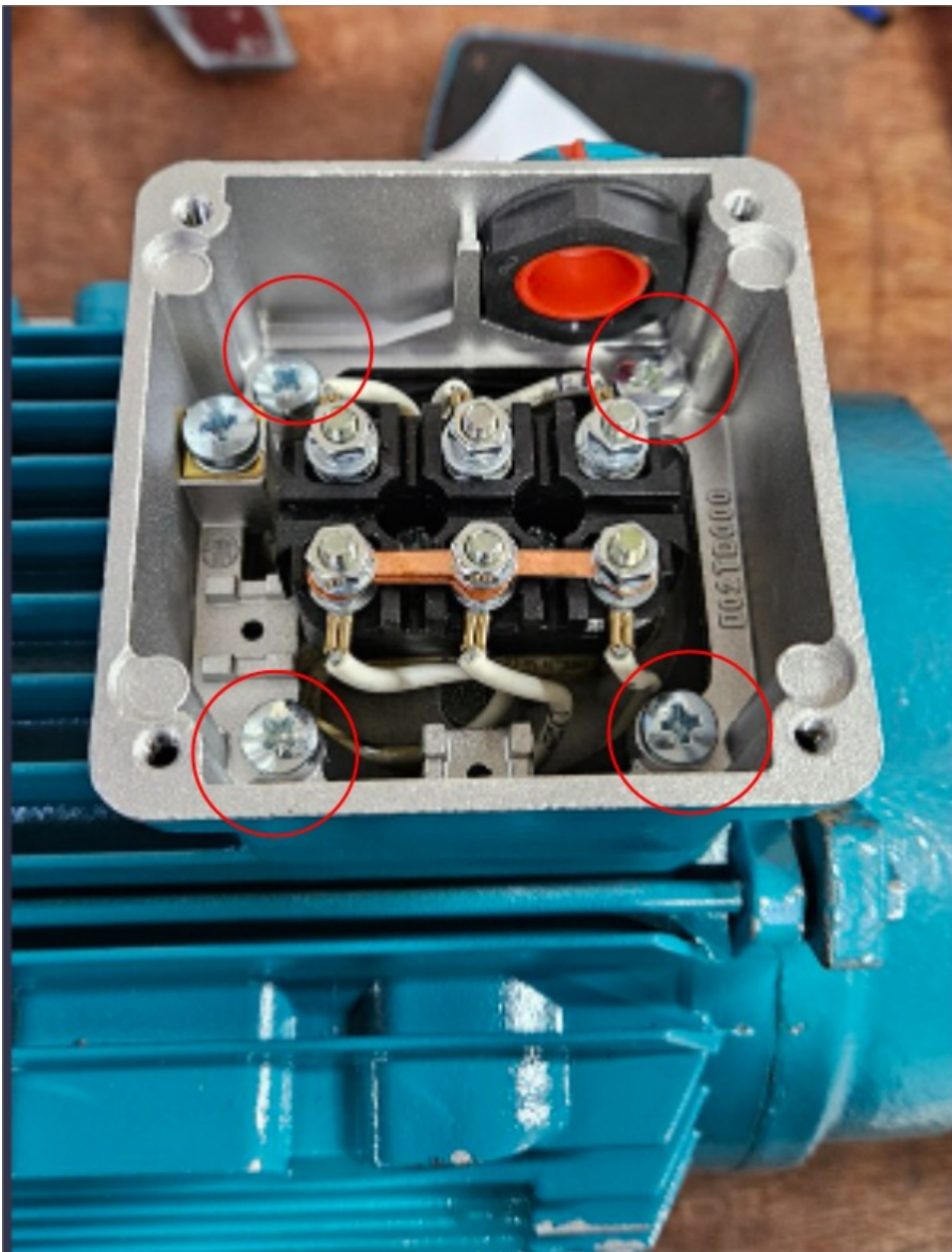


1.



2.

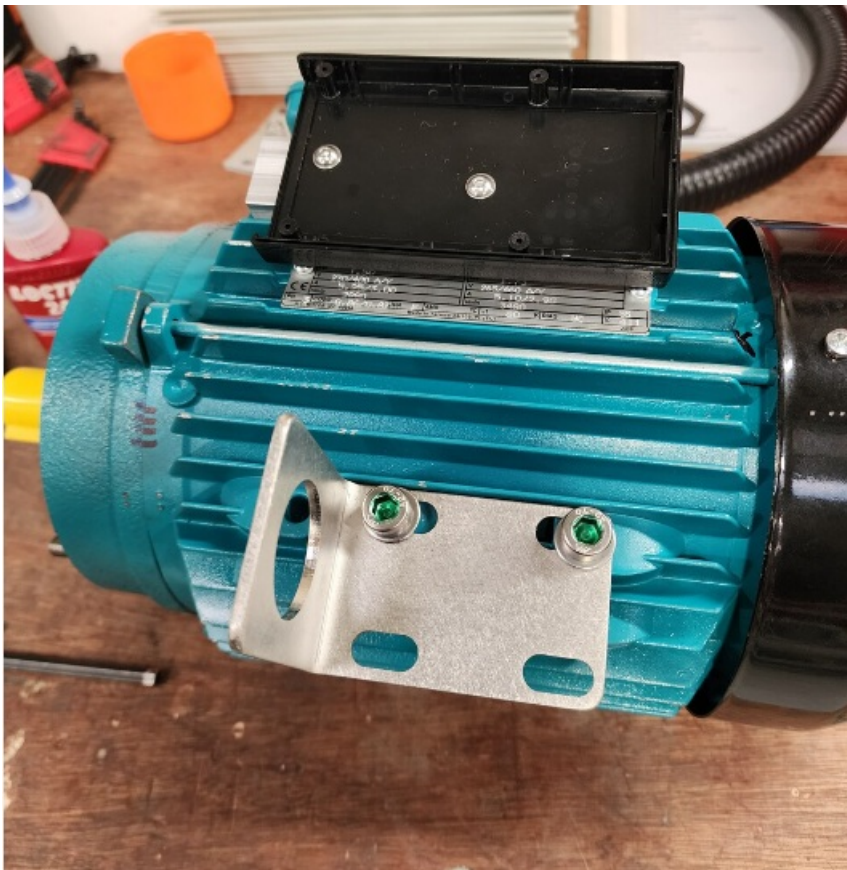
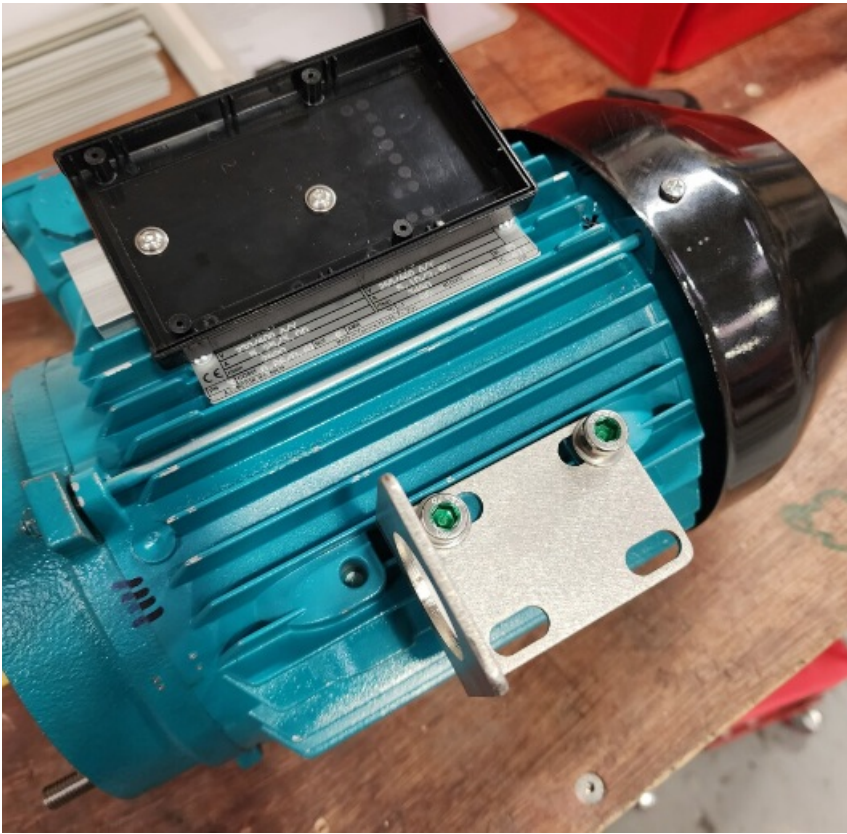




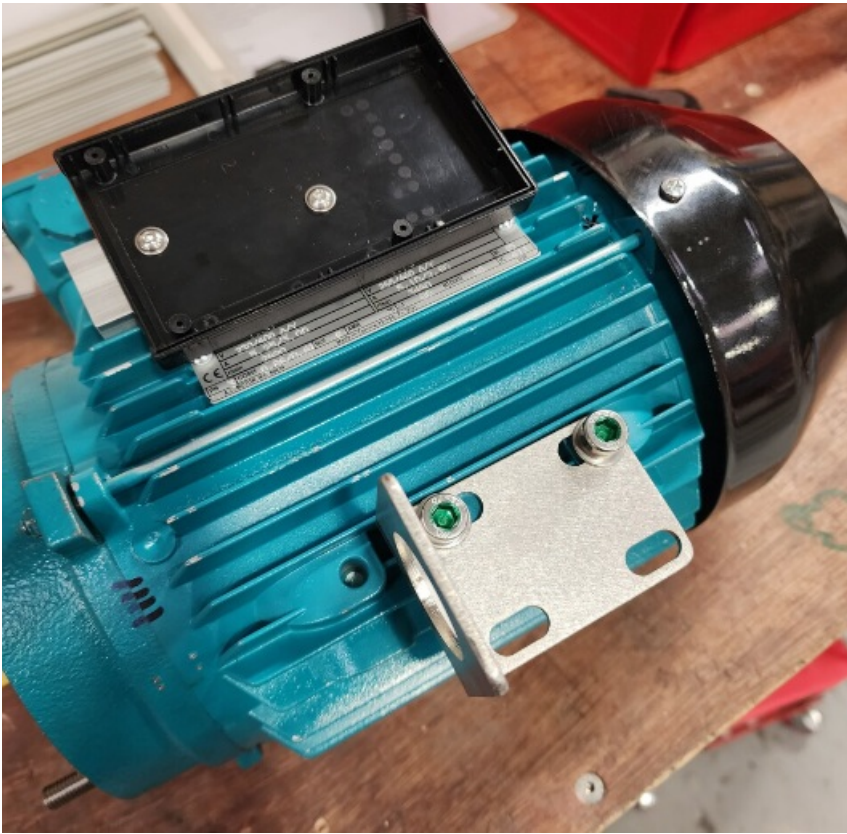
## Step 11 - Attach conduit mount

Attach conduit mount to main motor orientated as shown

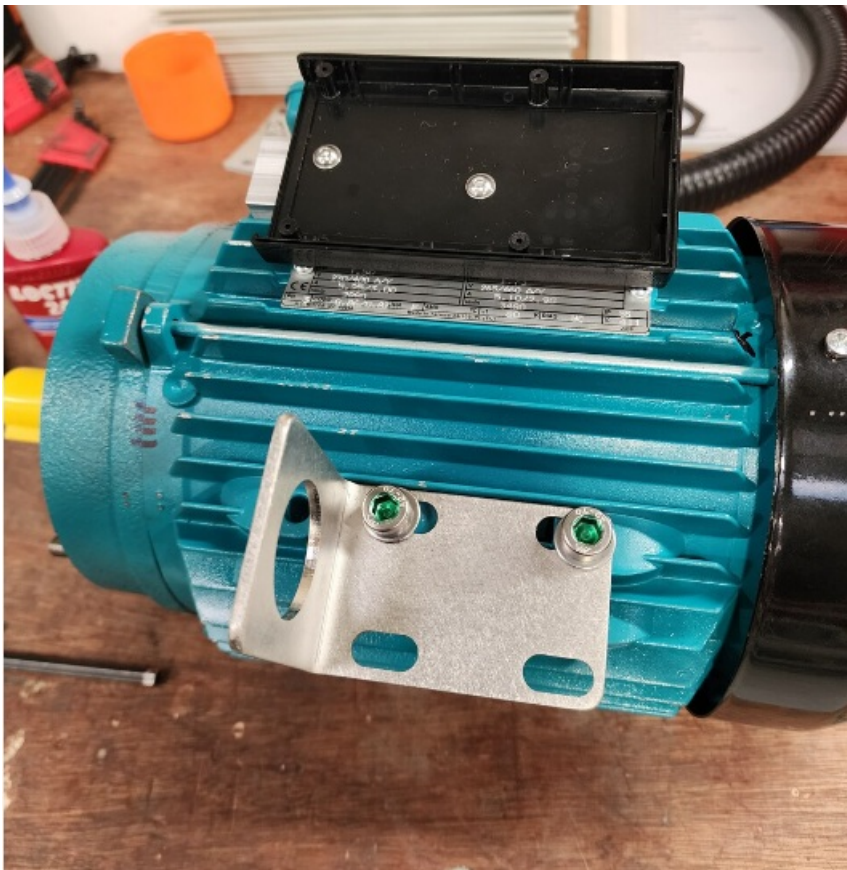
Use 2 off M8 x 16 socket caps and A form washers to fix



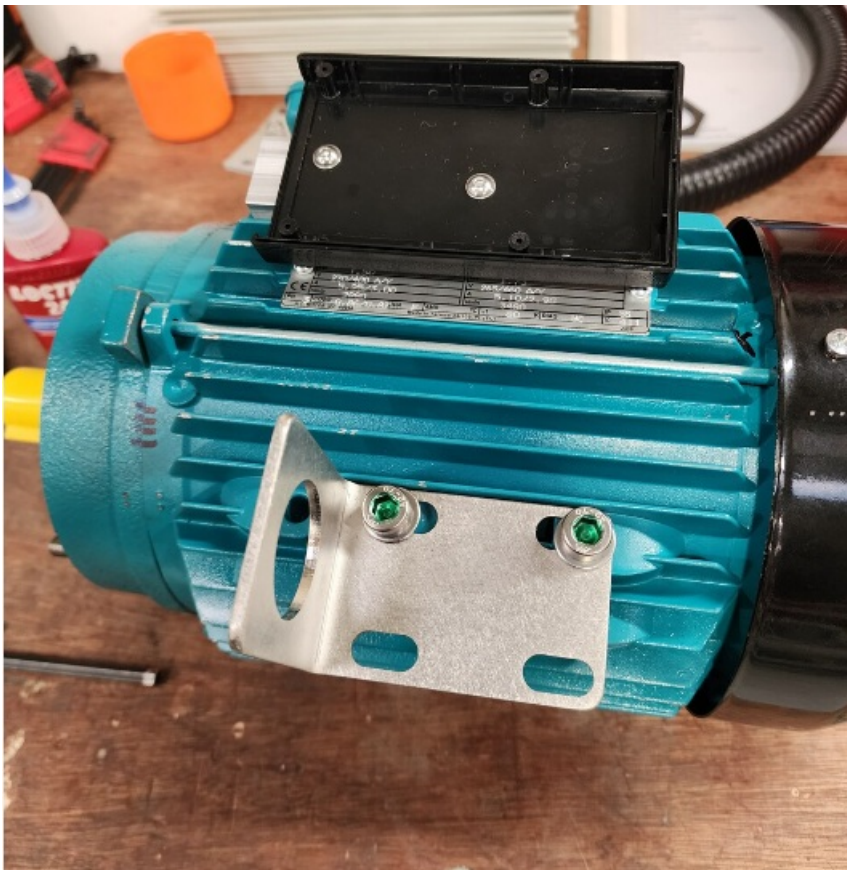
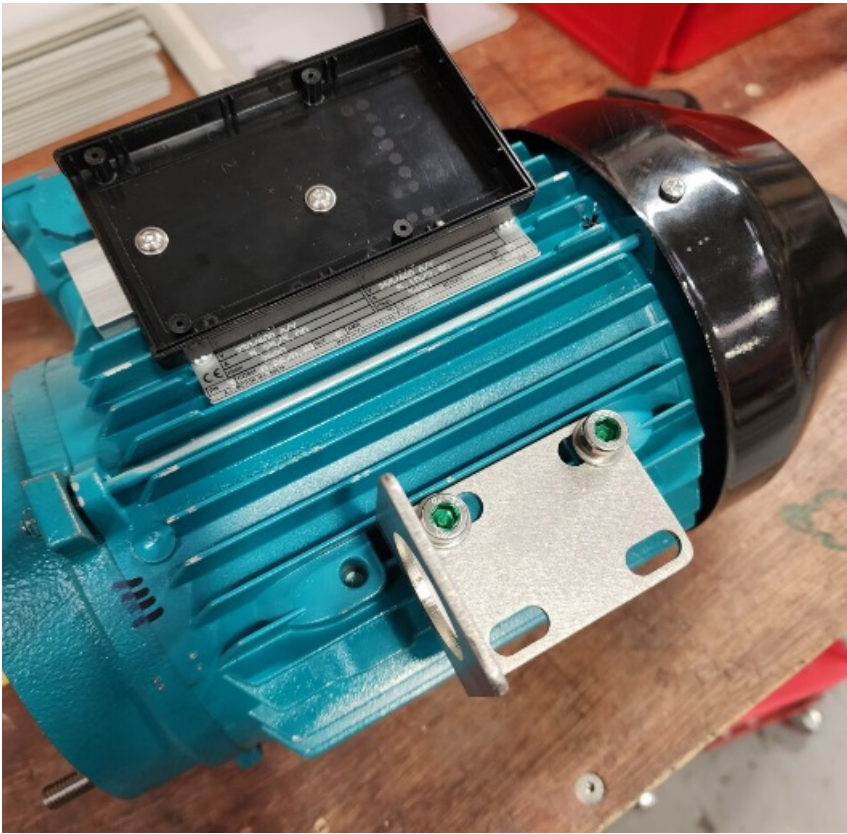




1.

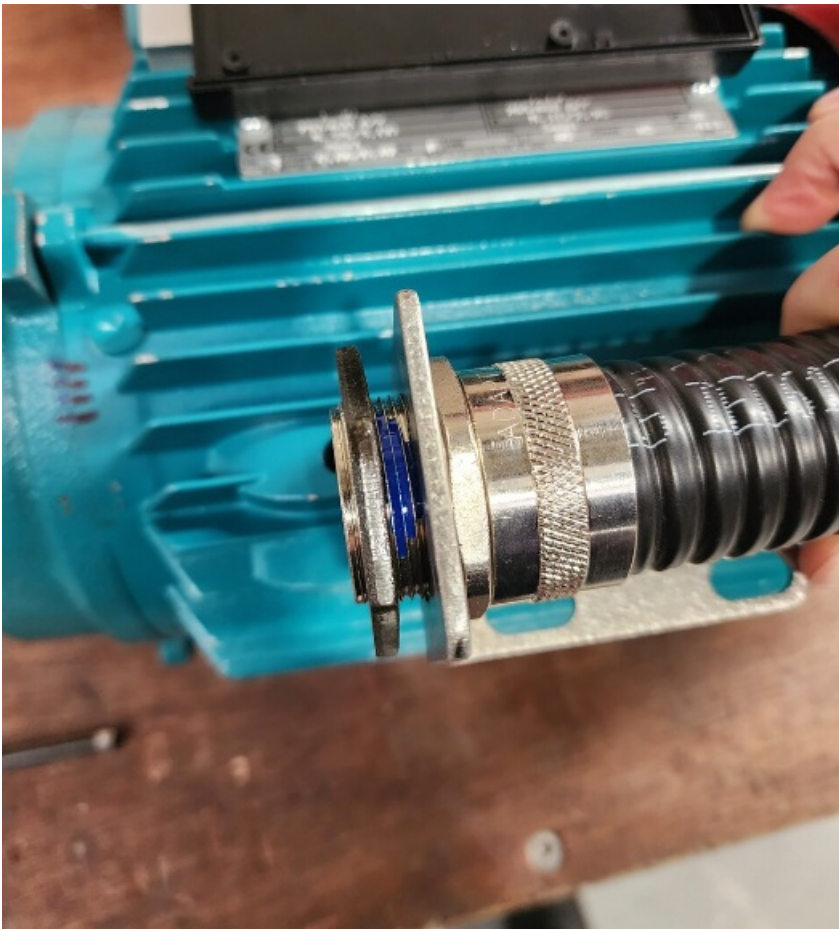
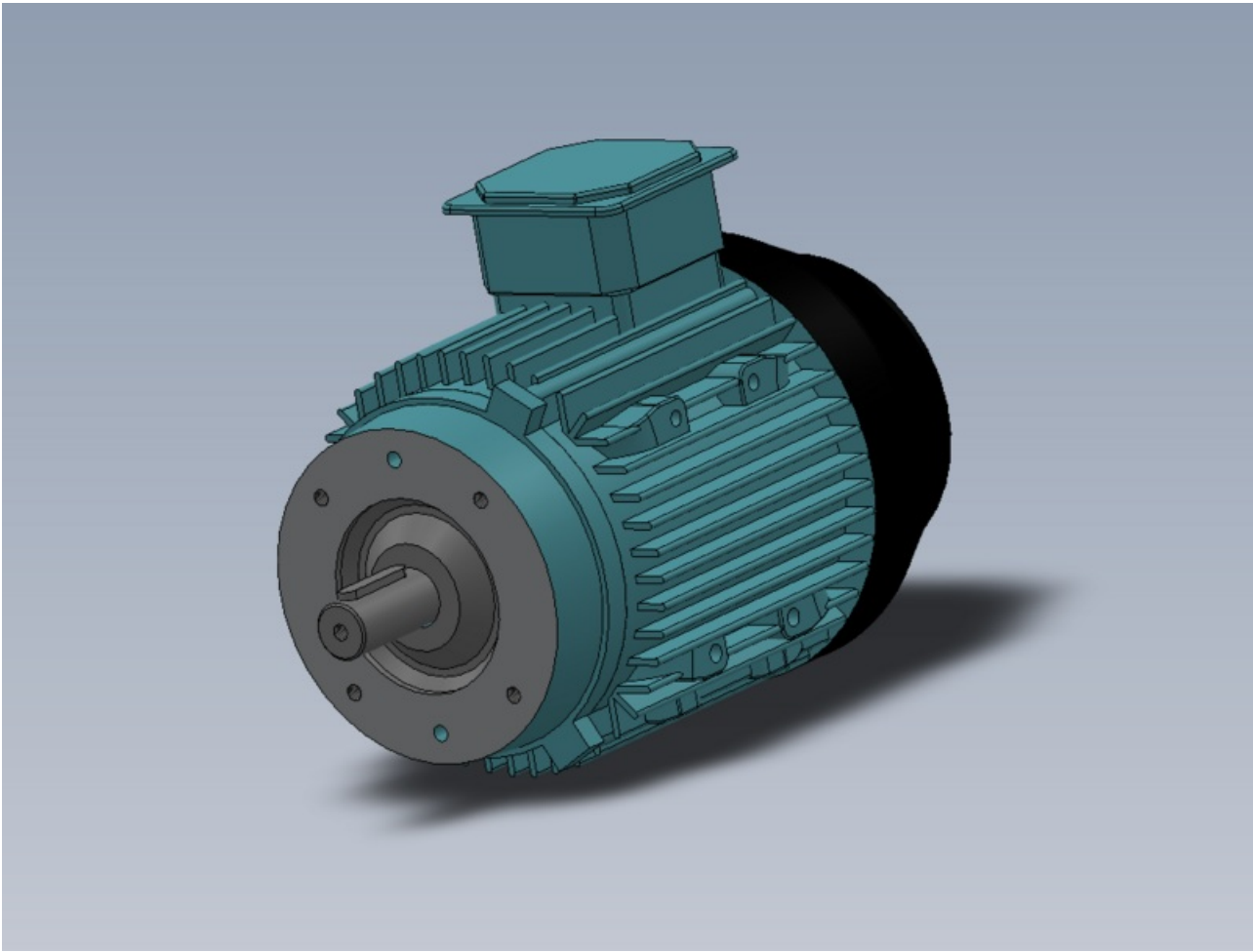


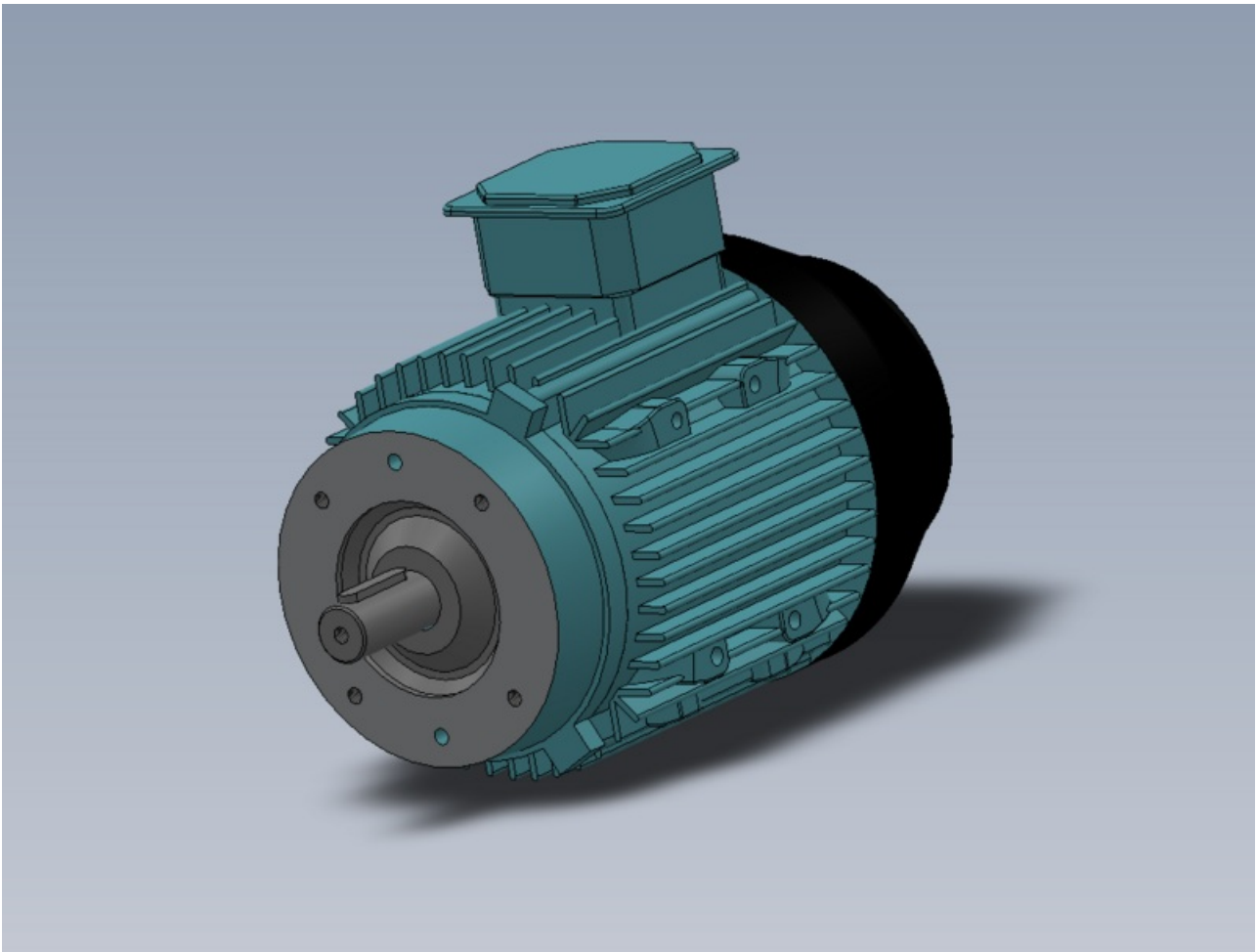
2.



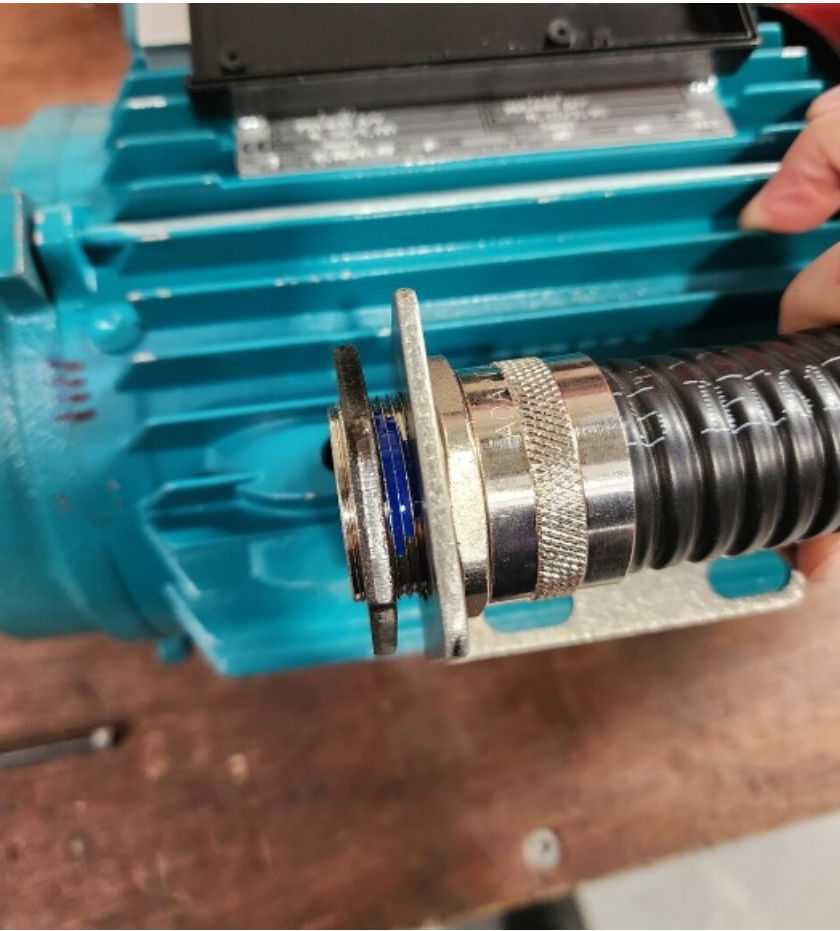
## Step 12 - Attach conduit to motor

Attach conduit to motor as shown . Ensure loctite 243 is used





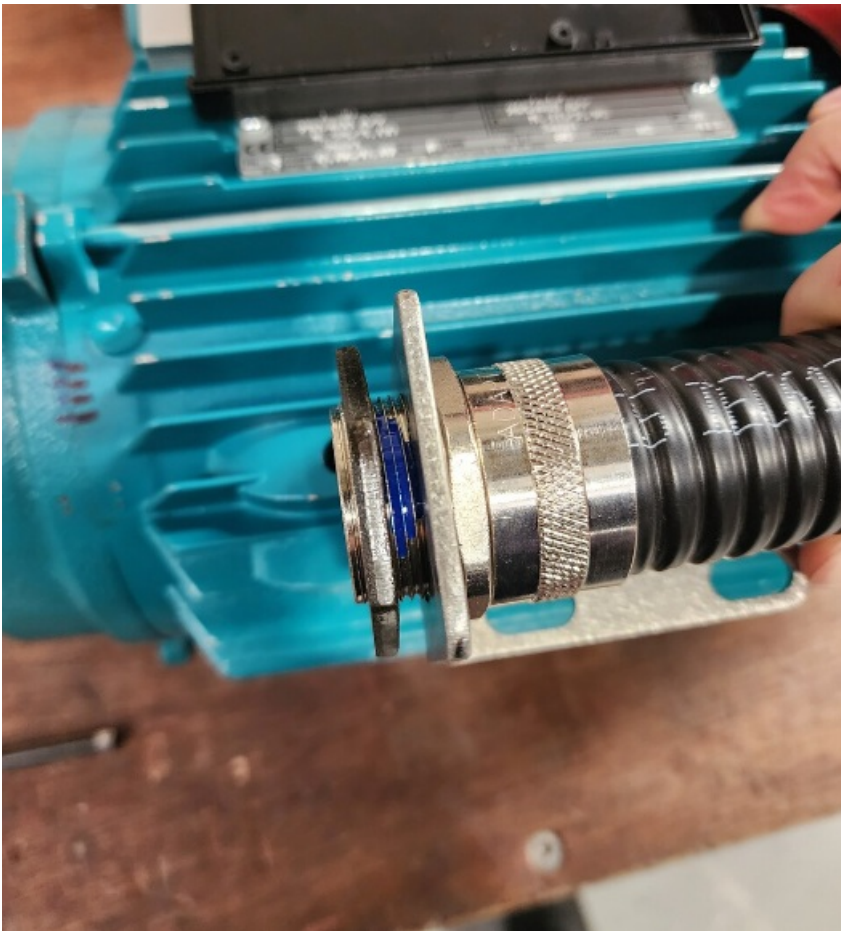
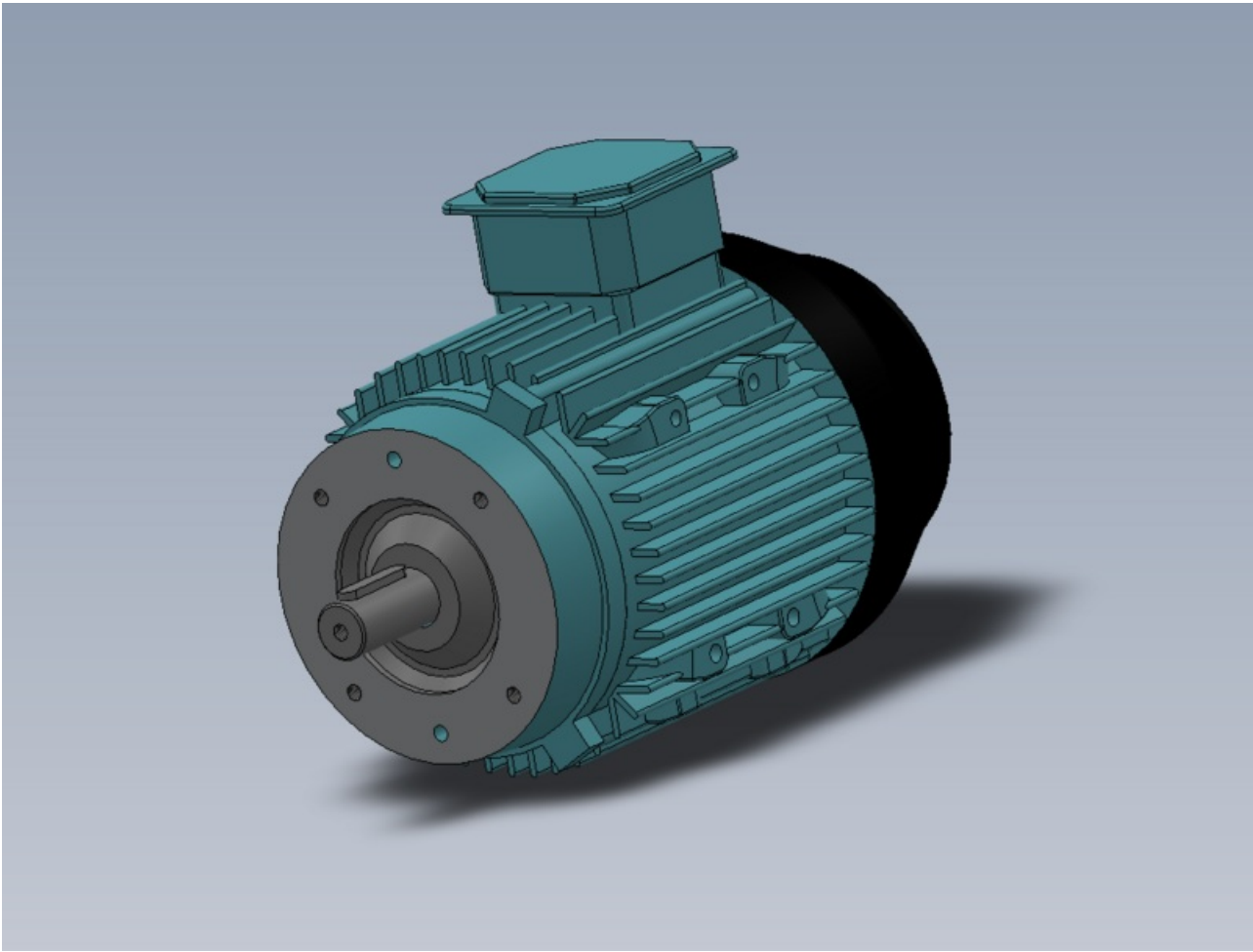
1.



2.



3.





## Comments

Draft

×

### Error in page name

You entered an invalid page name, with one or many of the following characters :

< > @ ~ : \* € £ ` + = / \ | [ ] { } ; ? #

×

### Log in

You doesn't have an account ? Subscribe to get the best of the platform !

×

### Embed this tutorial on your website

Player size


Color

---

Copy-paste the code below on your webpage

×

### Select a language

-  Français
-  English
-  Deutsch
-  Español
-  Italiano
-  Português

Cancel

Retrieved from "[https://stuga.dokit.app/w/index.php?title=R0015066\\_Bench\\_Assemble\\_Saw\\_Motor\\_Assembly&oldid=14389](https://stuga.dokit.app/w/index.php?title=R0015066_Bench_Assemble_Saw_Motor_Assembly&oldid=14389)"  
[Categories:](#)

- [Production](#)
- [Tutorials](#)

© 2017 - 2024 Dokit, SAS.

- [Terms of Use](#)
- [Privacy policy](#)
- [Recent changes](#)
- [Help](#)
- [About](#)