



R0015029D Hepco Beam Alignment Part 2

Instructions to correctly align and mount hepco drive beam

 Difficulty **Hard**

 Duration **1 minute(s)**

Contents

Introduction

Step 1 - Unless otherwise stated

Step 2 - fit blowers

Step 3 - Quality Check

Step 4 - Add mounting brackets

Step 5 - Adjust and fix brackets to hepco Beam

Step 6 - Add fixing dowels

Step 7 - Remove setting jigs

Comments

Introduction

Tools Required

Engineers level
Hepco flat spanner
Hepco Box spanner
Standard hex key set
Incremental shim pack
Torque wrench

Parts Required

B0000184 Journal Cap Seal 34 x 4
B0000185 Double Row Long Stud Journal Eccentric x 2
B0000186 Double Row Long Stud Journal Concentric x2
B0001102 Double Edge Spacer Slide and Beam 7600mm x 1
D0015072 Carriage Plate x 1
D0015492 Vertical Beam Adjustment Plate x5
D0015493 Lateral Beam Adjustment Plate x 5
P0000200 Elbow Adaptor 6mm - M5 x 2
F0000529 T-Nut M6 (slot 10) x 3
F0000530 T-nut M8 (slot 10) x1

Step 1 - Unless otherwise stated

Always Use Loctite 243 on all fasteners

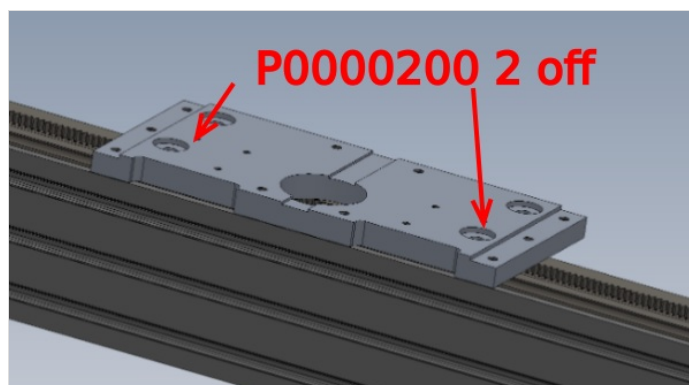
Always use Loctite 570 on all threaded pneumatic connections

Pen mark all fasteners to show finalised



Step 2 - fit blowers

Fit 2 off P0000200 5mm 6mm elbows to indicated points



Step 3 - Quality Check

Sign off is required at this point to double check and ensure quality .

Supervisor approval required

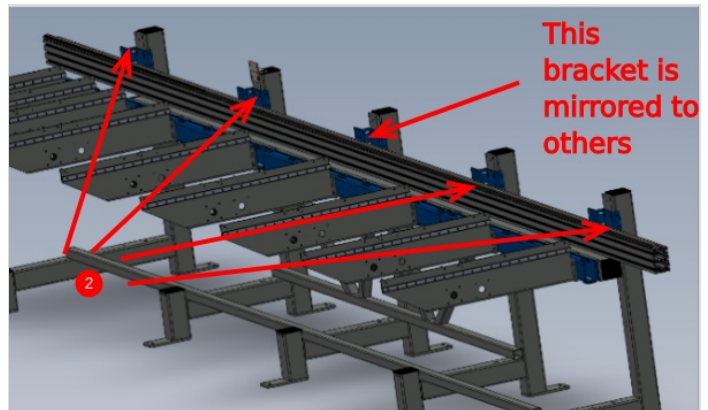
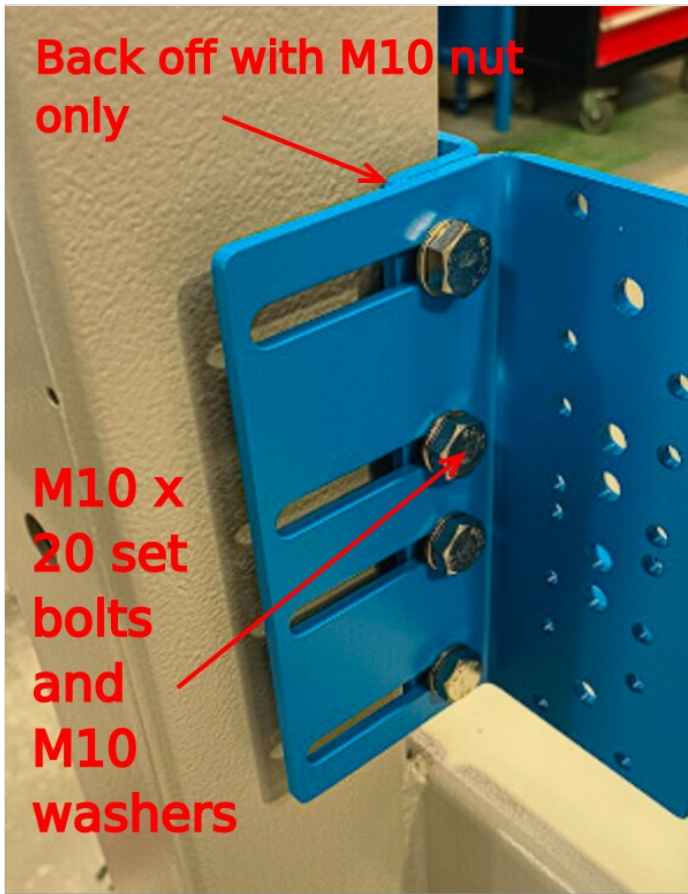
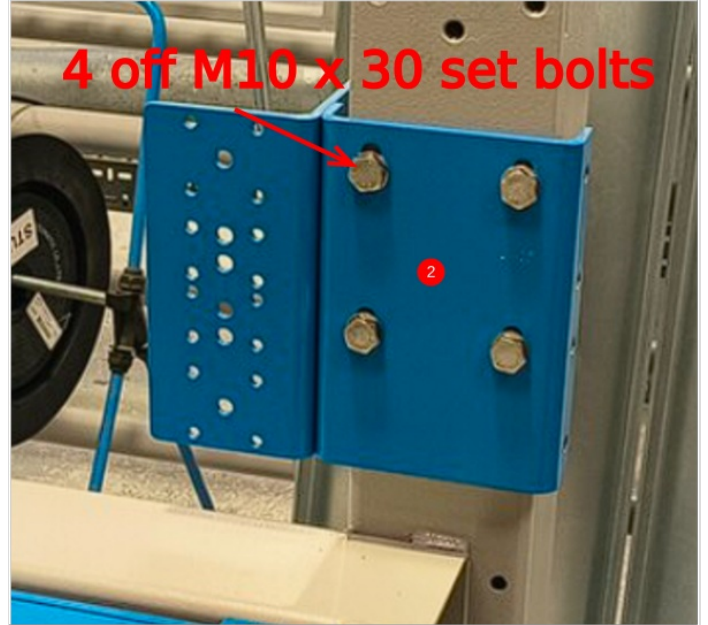


Step 4 - Add mounting brackets

1 Ensure brackets D0015492 Vertical Beam Adjustment Plate x5 and D0015493 Lateral Beam Adjustment Plate x 5 are cleaned with appropriate taps to remove any debris

⚠ ...Note central upright has bracket assembly fitted reverse to others

2 Assemble brackets as shown in positions indicated. Use M10 set bolts and back off with M10 nuts only (no washers) where indicated

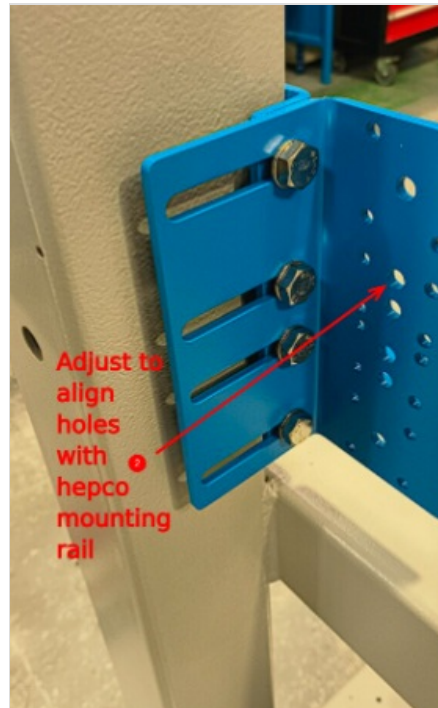


Step 5 - Adjust and fix brackets to hepco Beam

1 Use plate fixings to secure hepco beam to mounting brackets

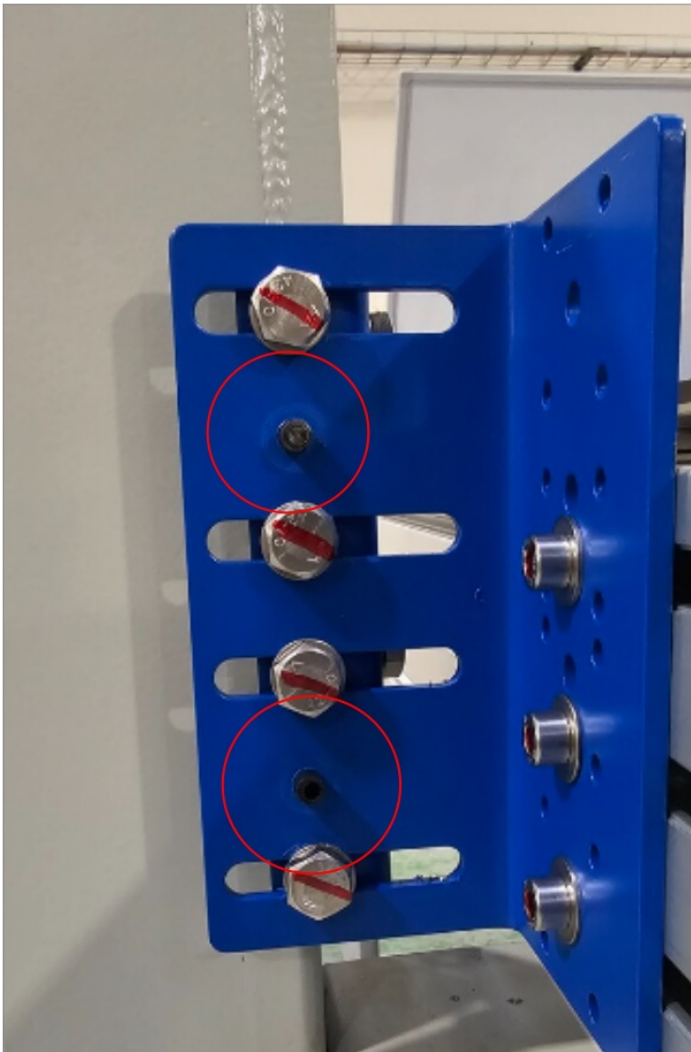
2 Adjust mounting plates to line up with hepco rail mounting slots, using M8 square nuts and spring

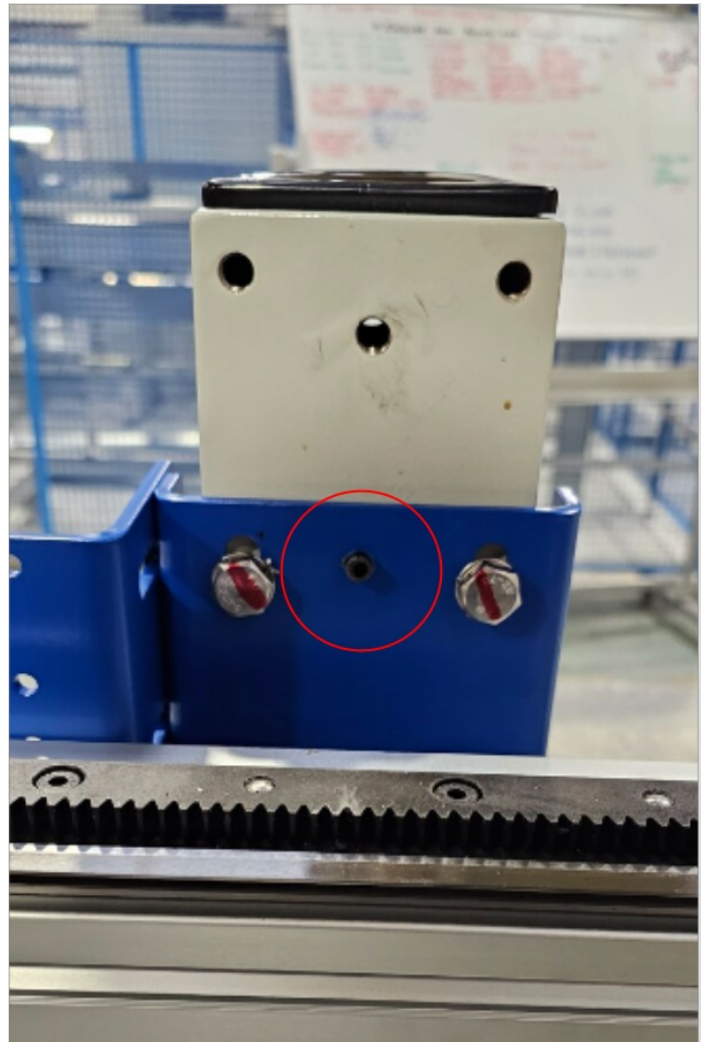
3 Apply M8 x 16 and M8 penny washers to lock beam in position



Step 6 - Add fixing dowels

Once mounting brackets are mounted into position, doweling is required to hold position when jigs are removed







Step 7 - Remove setting jigs

Setting jigs can now be removed
All levels should be checked once removed to confirm that positions
have been held

