


# R0002794E Mount Width sensor

Instructions for correct mounting and set up of width sensor assembly

 Difficulty **Medium**

 Duration **1 hour(s)**

## Contents

Introduction

Step 1 - Unless otherwise stated

Step 2 - Ecr raised for spacer block

Step 3 - Fit mounting brackets

Step 4 - Fit linear sensor

Step 5 - Fit captive magnet ball joint

Step 6 - Attach magnet mounting block

Step 7 - Set position of magnet ball joint

Step 8 - Connect Magnet block

Step 9 - Final fix magnet mounting block

Step 10 - Check alignment of mounting block

Step 11 - Test operation

Comments

## Introduction

### Tools Required

Standard Hex key set

Standard spanner set

Hack saw

### Parts Required

D0000655 Magnet mounting block x 1

E0000461B Analogue linear sensor x 1

E0000463 Captive magnet with ball joint x 1

M5 studding (consumable stock )

## Step 1 - Unless otherwise stated

Use loctite 243 on all fasteners

Use loctite 572 on all threaded pneumatic connection

Pen mark all fasteners to show finalised



---

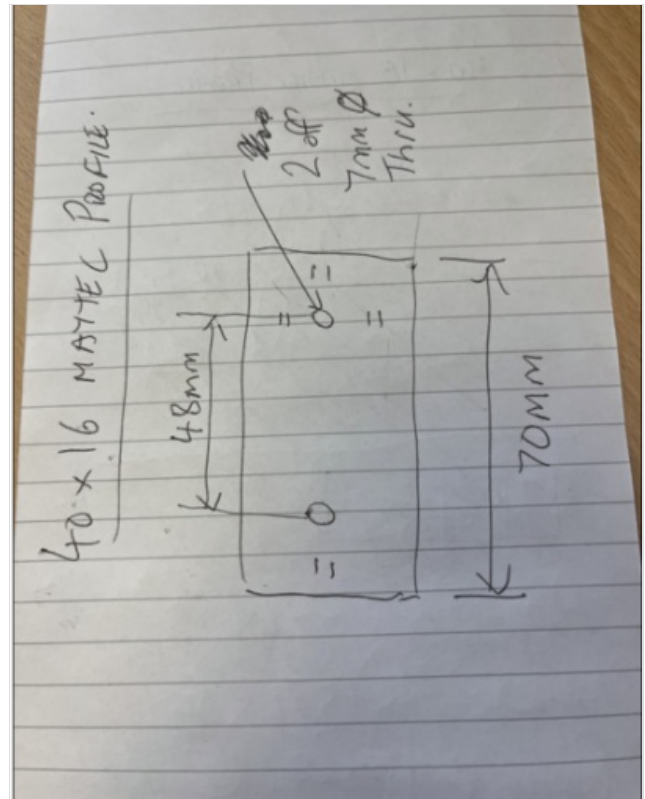
## Step 2 - Ecr raised for spacer block

Ecr raised 15/08/23 to create new part for additional spacer block required

If not issued, part will require making until new parts are processed

See drawing for details

2 off required

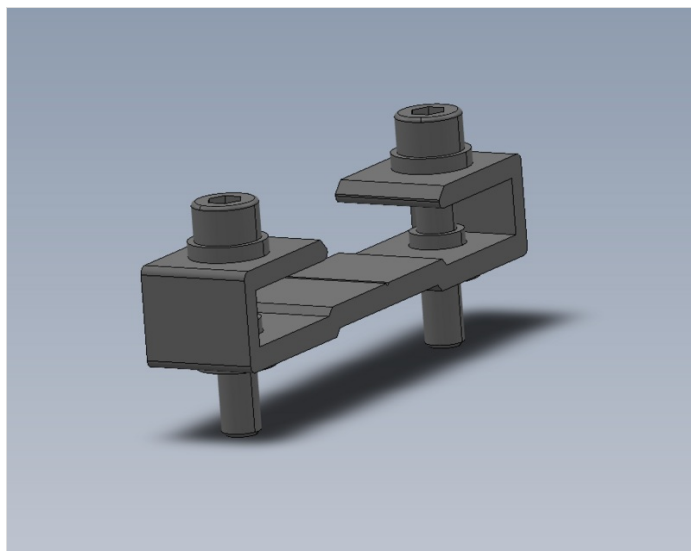


## Step 3 - Fit mounting brackets

Fit mounting brackets and spacers

Ensure to fit supplied top hat bushes

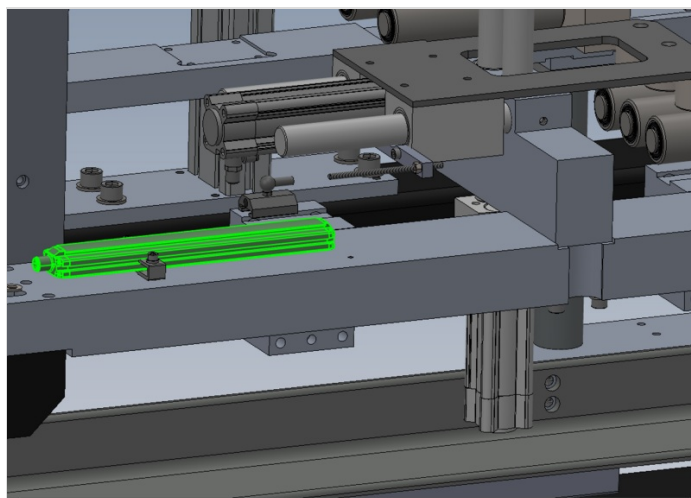
Use longer M5 socket caps to captivate bracket and spacer



## Step 4 - Fit linear sensor

Slide into position linear sensor

Ensure plug connection is facing towards trunking

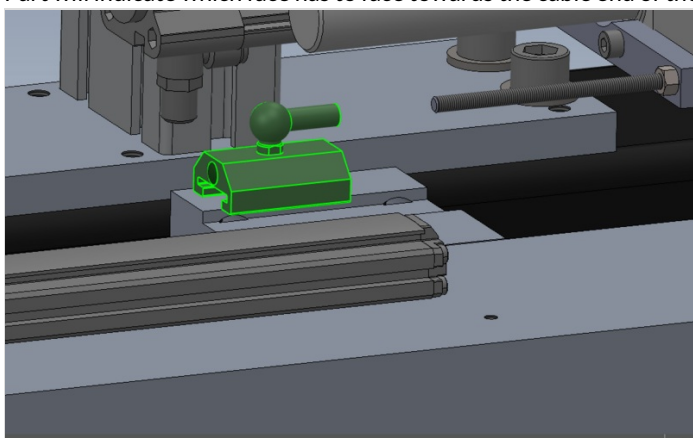


## Step 5 - Fit captive magnet ball joint

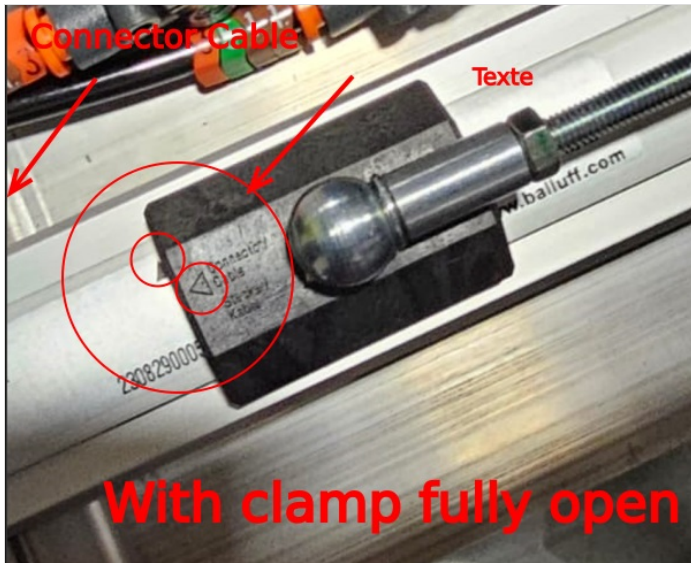
Slide on captive magnet ball joint

Ensure correct orientation, Use pictures for guidance for correct positioning

Part will indicate which face has to face towards the cable end of the sensor



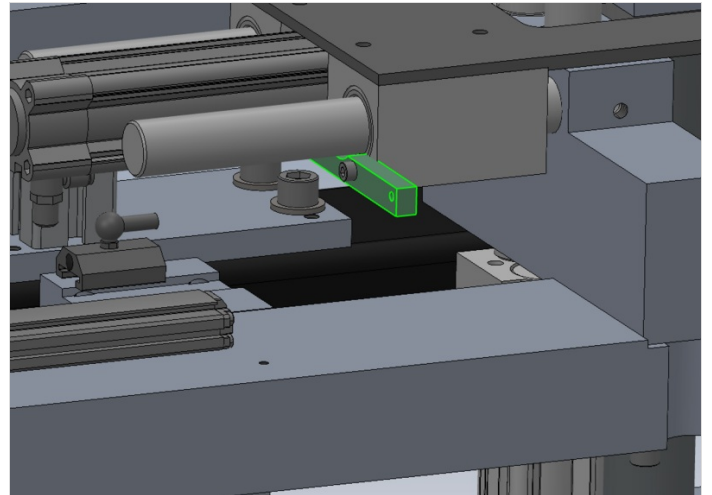




---

## Step 6 - Attach magnet mounting block

Dry fit magnet mounting block

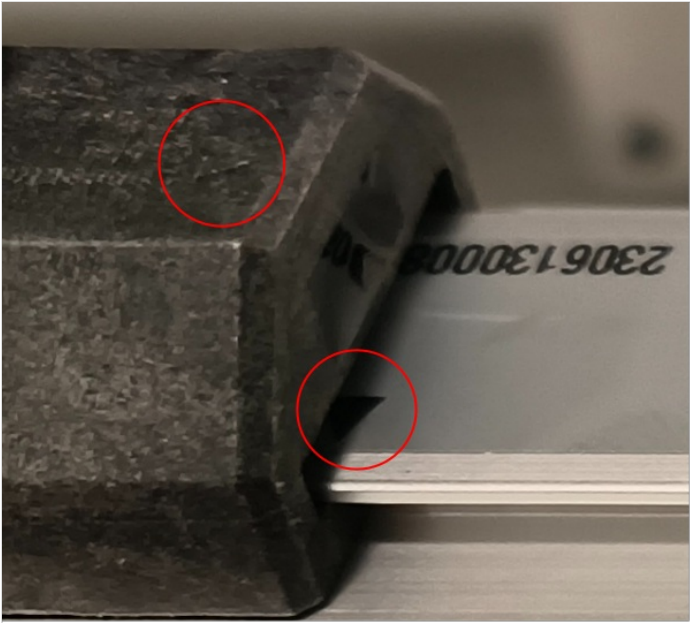
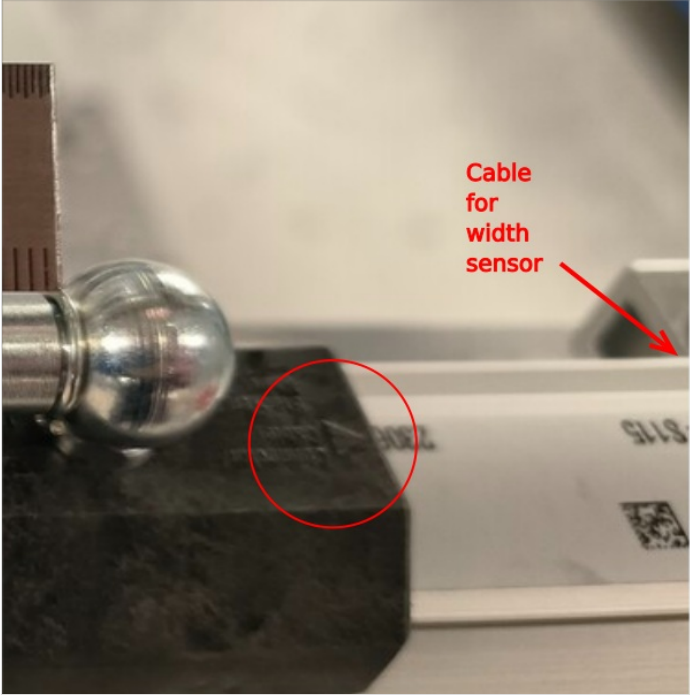
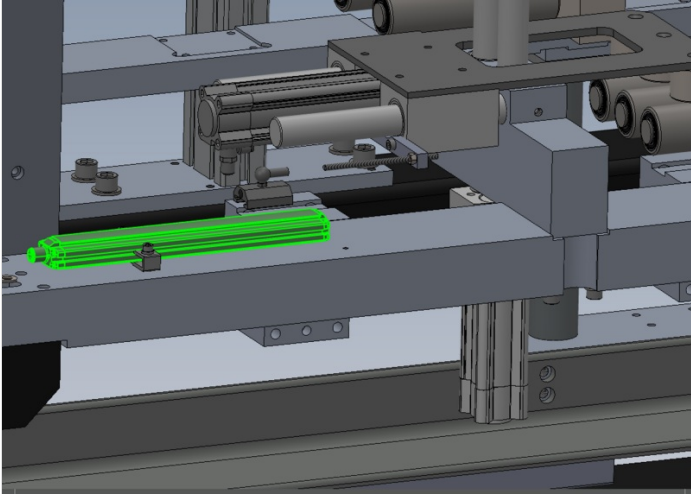


---

## Step 7 - Set position of magnet ball joint

Set position of magnet ball joint to align with indicator mark on linear sensor

Ensure side clamp assembly is fully retracted

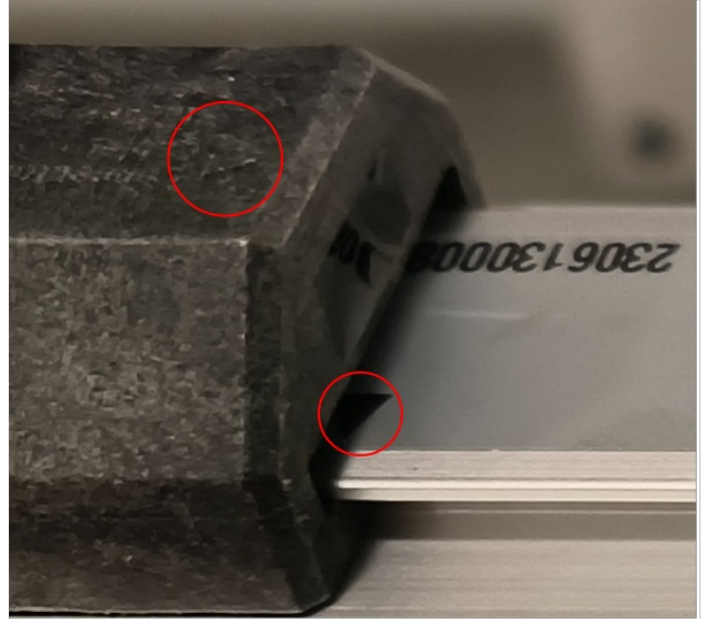
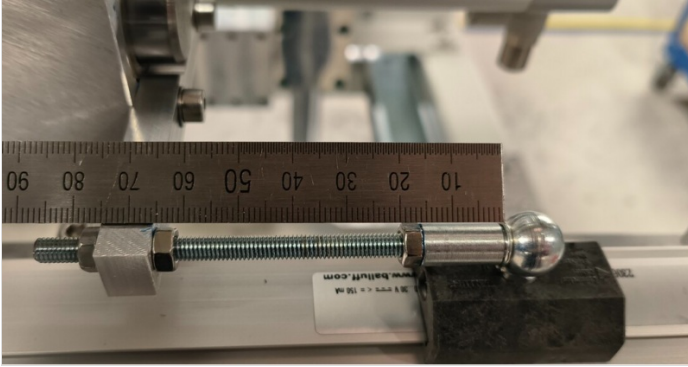




## Step 8 - Connect Magnet block

Cut 1 off piece of M5 studding to 85mm

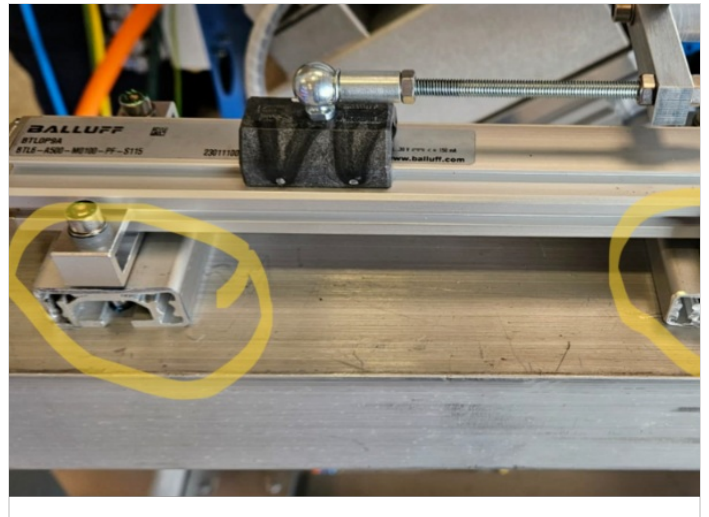
Attach studding to magnet block, use loctite 243 and M5 nuts to lock into position, ensuring position of markers is retained when the clamp is fully open



## Step 9 - Final fix magnet mounting block

Final fit magnet mounting block to clamp assembly

Finalise locking nut on studding



## Step 10 - Check alignment of mounting block

Clearance in mounting block M5 fixings should be used to ensure correct alignment of ball joint, studding and fixing block.

Finalize M5 nuts onto ball joint and mounting block. Then release tension on 2 off M5 socket caps holding mounting block on then re-tension.

This will correctly set alignment between the 3 components



## Step 11 - Test operation

Ensure side clamp movement is not hindered by attached width sensor assembly

Check when clamp is retracted magnet block aligns perfectly onto indicator mark on linear sensor

Check magnet block is orientated correctly ( cable indicator is facing cable )

---

