



R0000738 Pneumatic Installation Part 2

Pneumatic installation details for ZX5 module B

 Difficulty **Hard**

 Duration **1 minute(s)**

Contents

Introduction

Step 1 - Unless otherwise stated

Step 2 - Assemble Connection branch

Step 3 - Run 1 off 12mm red pipe

Step 4 - Run 1 off 12 Red air pipe

Step 5 - Run 1 off 12 Red air pipe

Step 6 - Run 2 off 8mm red pipes to front panel

Step 7 - Run 1 off 6mm red air pipe to front panel

Step 8 - 6mm red connections to pilot check valves

Step 9 - Connect 2 off 6mm pipes to z support cylinders

Step 10 - 8mm red V cut support cylinder connection

Step 11 - Fit pre assembled lower front pneumatic panel

Step 12 - Connect 12mm pipes

Step 13 - Connect air gun feed

Step 14 - Connect VZ regulator

Step 15 - Connect Z support Regulator

Step 16 - Connect Y386

Step 17 - Connect Y351

Step 18 - Connect Y350

Step 19 - Connect Y395

Step 20 - Check Connection for air gun

Comments

Introduction

Tools Required

Pipe cutters

Pipe identification numbers

Parts Required

D0015703 Air Gun Bracket x 1

P0000010 Elbow Adaptor 6mm - 1/8 BSPT (Taper thread) x 2

P0000046 Fitting: 'Y' Adaptor 6mm x 4

P0000053 6mm T (P16) x 2

P0000075 Parallel Y Connector 8mm x 1

- P0000077 Straight Adaptor 8mm - 1/8BSP x 3
- P0000160 Fitting: Flow Controller In Line 6mm x 4
- P0000161 Plug-in Reducer 6mm Tube 8mm Fitting x 6
- P0000401 6mm inline non return valve x 2
- P0000470 Valve: 5/2 PnPnu 1/8BSP x 1
- P0000513 Ball valve with QS connector x 1
- P0000551 6mm inline Quick Exhaust Fitting x 6
- P0001106 Plug in reducer 12mm to 8mm x 7
- P0001107 12mm Y connector x 8
- R0015114 Bench Assemble Valve banks and Regulators

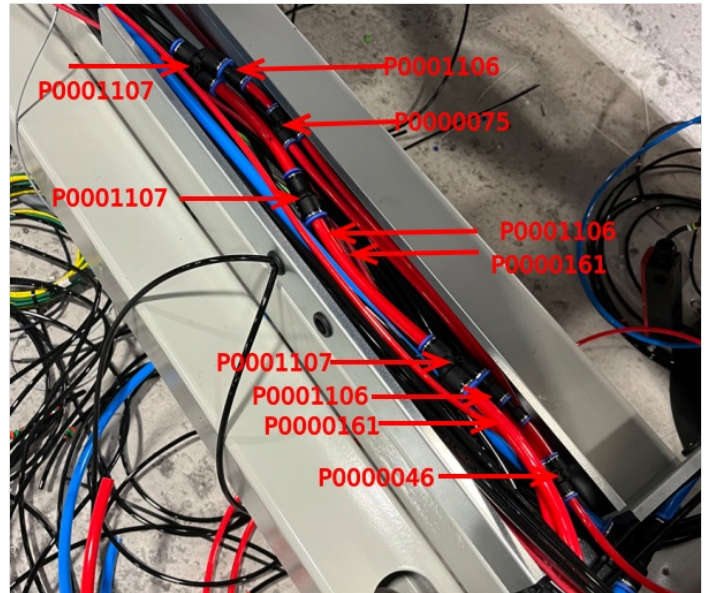
Step 1 - Unless otherwise stated

- Use Loctite 243 on all fasteners
- Use Loctite 572 on all threaded pneumatic connection
- Pen mark all fasteners to show finalised



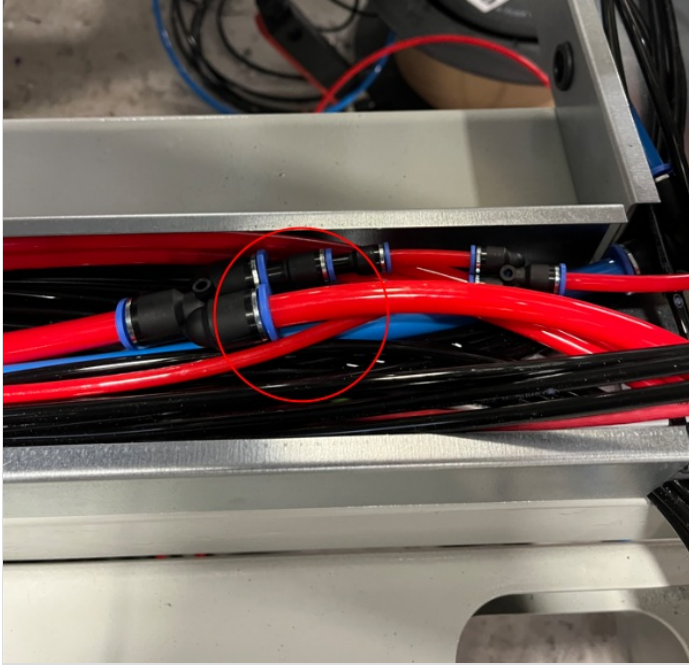
Step 2 - Assemble Connection branch

Assemble connection branch as shown



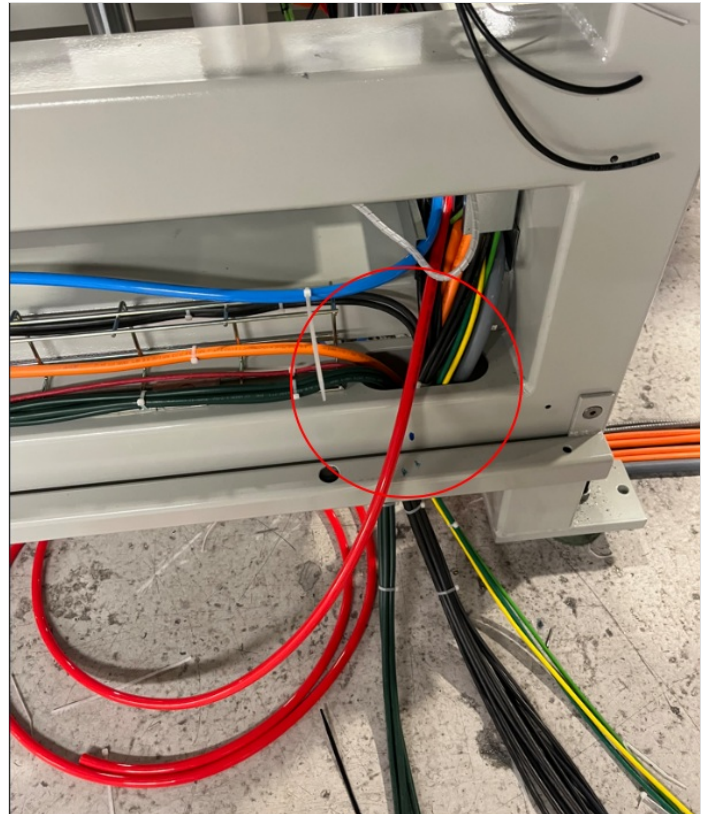
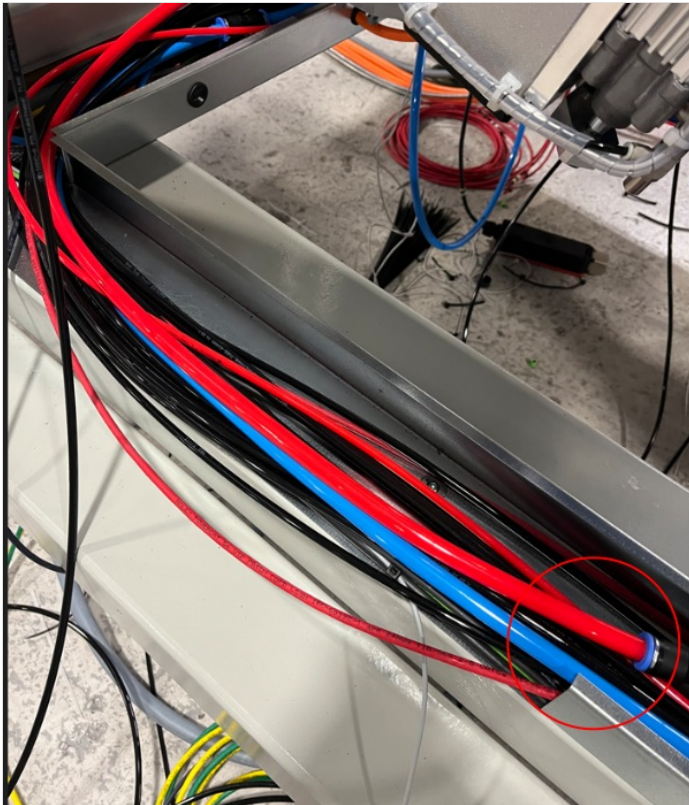
Step 3 - Run 1 off 12mm red pipe

Run 1 off 12mm red pipe from 12 y connector to front panel as shown



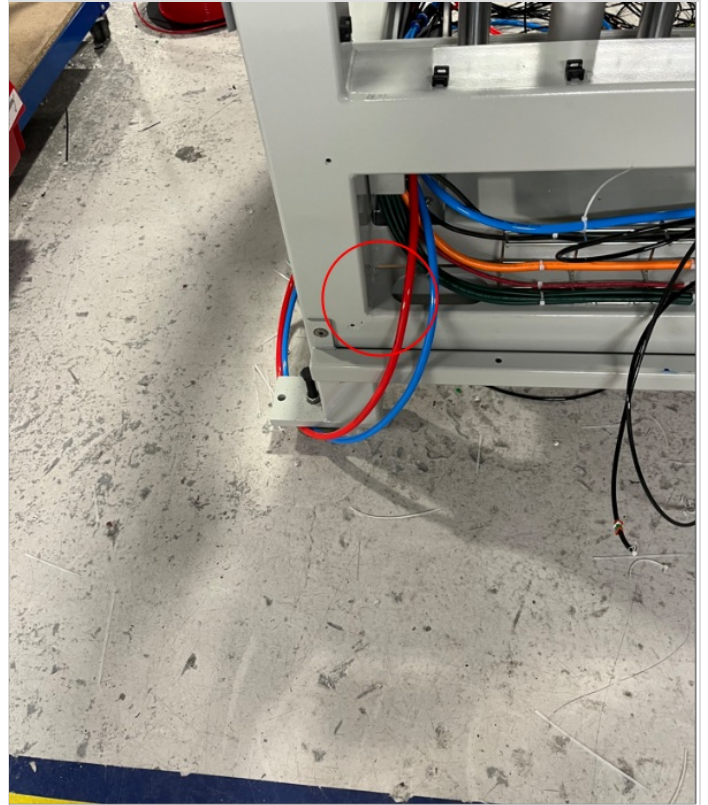
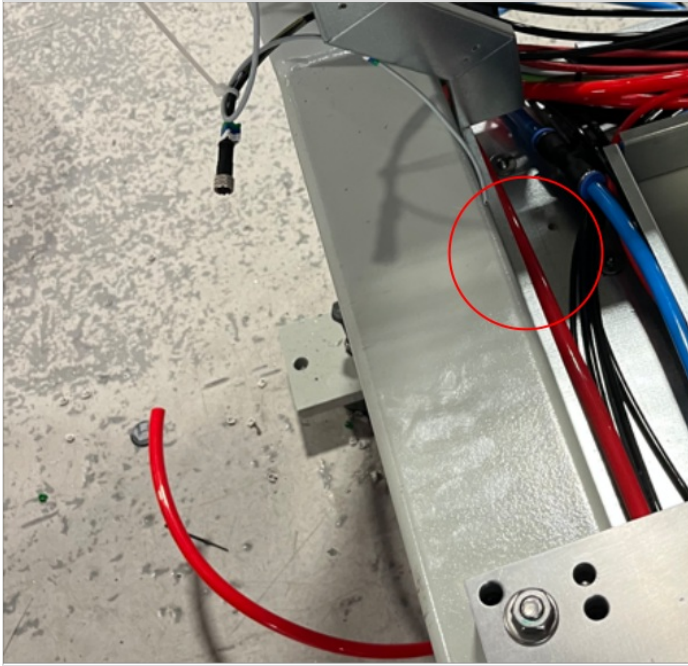
Step 4 - Run 1 off 12 Red air pipe

Add 1 off 12 red air pipe to 12 y connector and route as shown leaving enough length once exited machine rear to carry across wire basket to rear pipe exit point



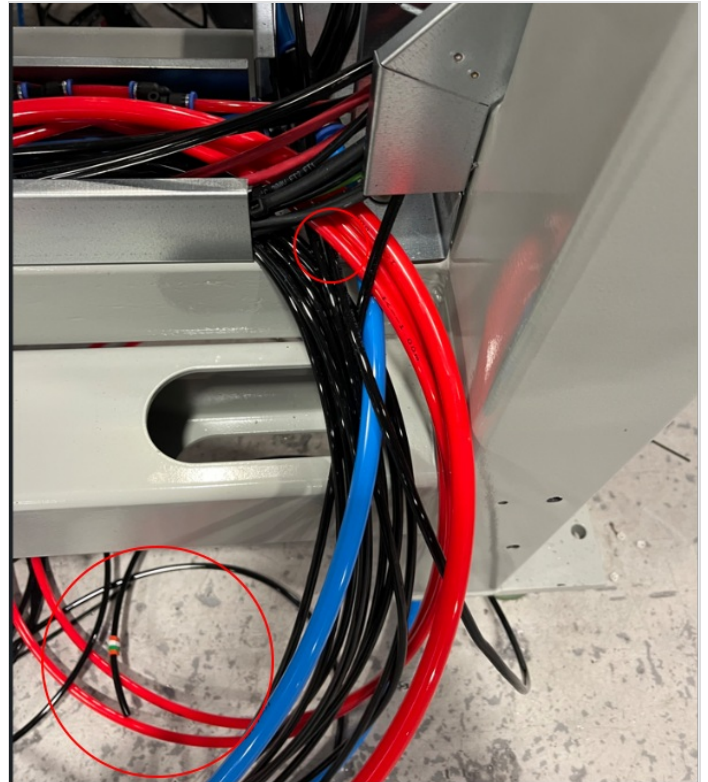
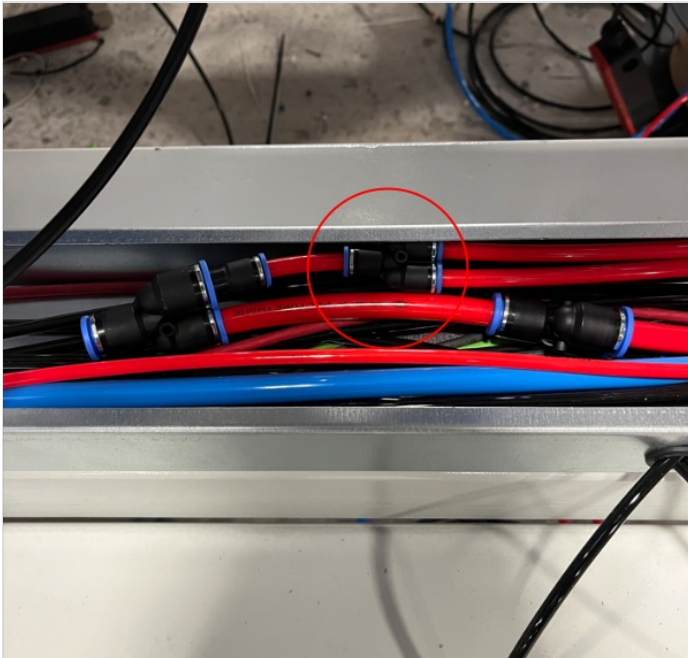
Step 5 - Run 1 off 12 Red air pipe

Add 1 off 12 red air pipe to run front to back exit of machine as shown



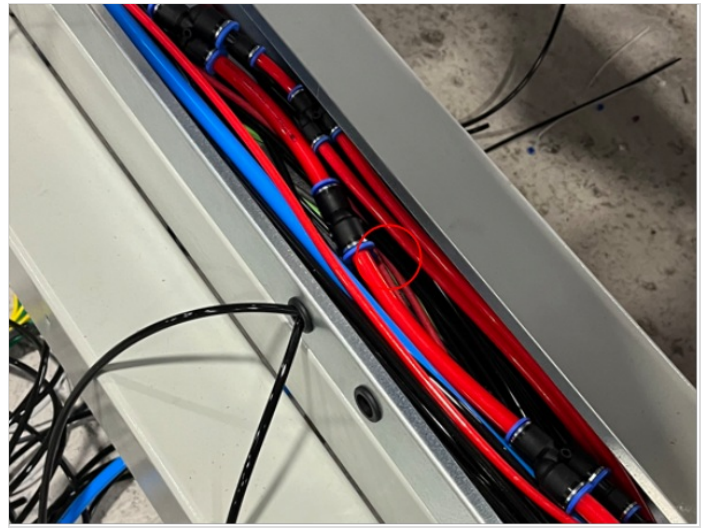
Step 6 - Run 2 off 8mm red pipes to front panel

Connect 2 off 8mm red pipes to 8mm y connector and run to front panel connection area



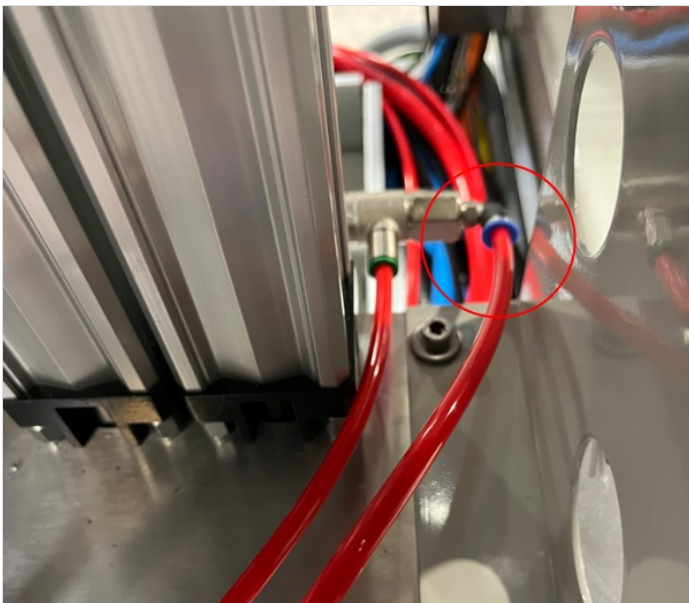
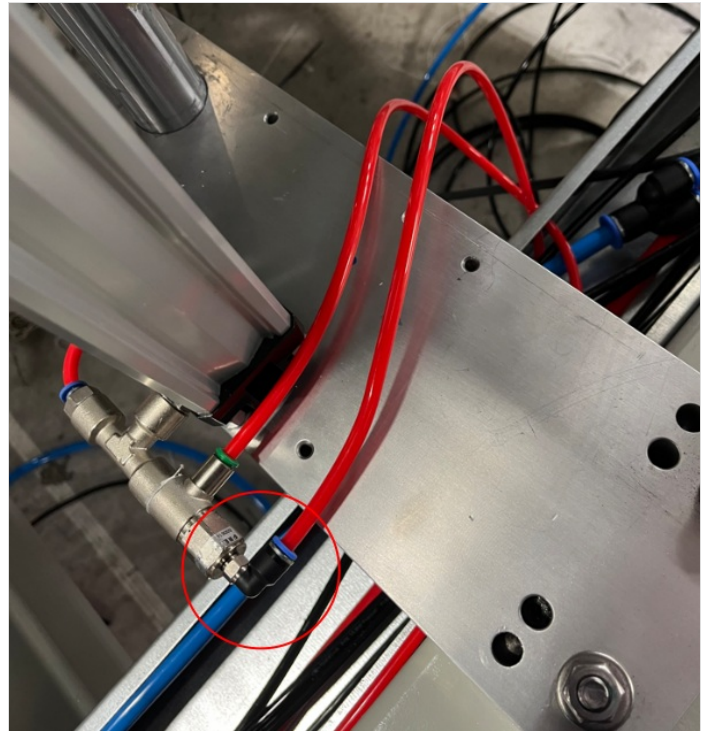
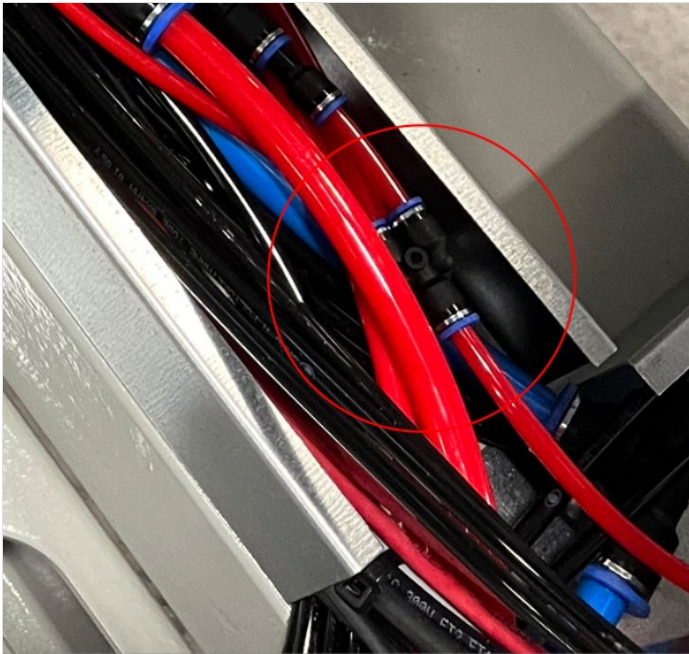
Step 7 - Run 1 off 6mm red air pipe to front panel

Connect 1 off 6mm red air pipe to fitting shown and run to front panel



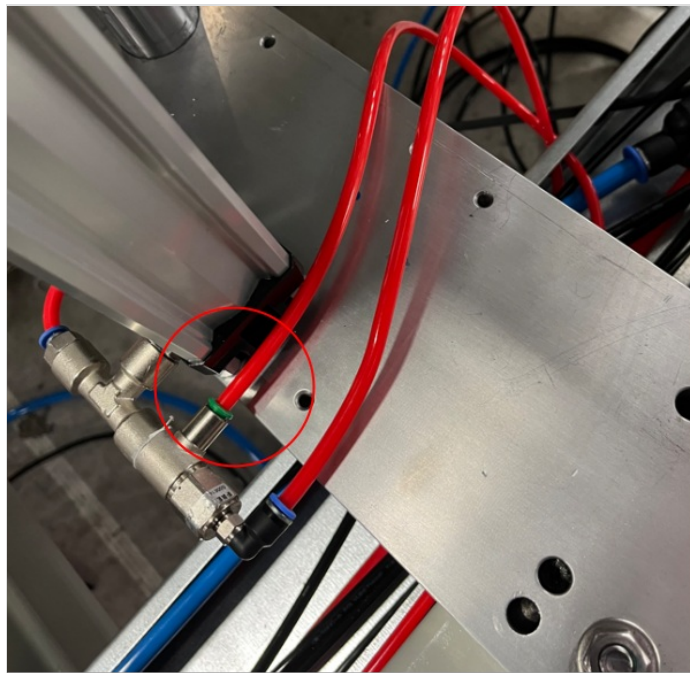
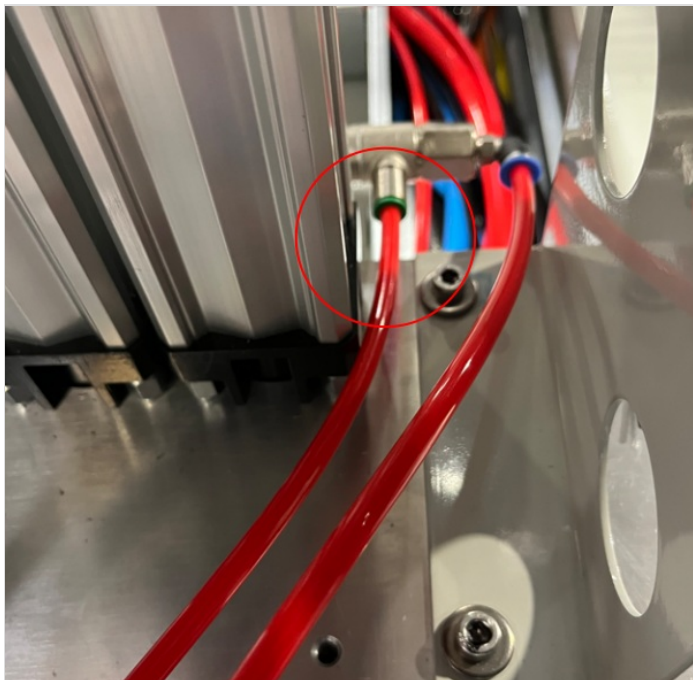
Step 8 - 6mm red connections to pilot check valves

Run 2 off 6mm red pipes from indicate 6mm y connection and connect to z support pilot valves a shown



Step 9 - Connect 2 off 6mm pipes to z support cylinders

Connect 2 off 6mm red air pipes to indicated fittings on Z supports and run to front panel connection point. Identify pipes as Z reg for connection later



Step 10 - 8mm red V cut support cylinder connection

Connect 8mm red pipe to base of support cylinder (with exhaust at top of cylinder). Run to front panel connection and identify pipe as VZ reg



Step 11 - Fit pre assembled lower front pneumatic panel

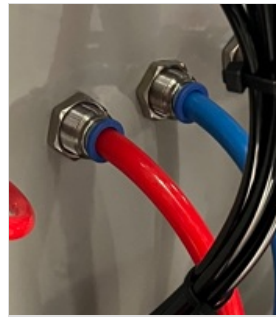
Fit pre assembled lower front panel

Use M6 x 16 5socket caps with M6 A form washers

Use 2 off M5 x 12 socket caps with M5 A form washers

Step 12 - Connect 12mm pipes

Connect 2 off 12mm red and 1 off 12mm blue air pipe to bulk heads



Step 13 - Connect air gun feed

Connect 1 off unmarked 8mm red air pipe to air gun reg in port



Step 14 - Connect VZ regulator

Connect 1 off unmarked 8mm red pipe to VZ support reg IN

connect 8mm pipe identified as VZ support to VZ support reg out



Step 15 - Connect Z support Regulator

Connect unmarked 6mm red air pipe to Z support reg IN. Add P0000401 inline non return to line just before regulator. ensure non return valve is orientated as shown

Connect 2 off 6mm pipes identified as Z reg into P0000046 6mm y connector and then connect single pipe to Z support reg OUT



Step 16 - Connect Y386

Connect 3862 To Clamp middle Top regulator OUT

Connect 3863 To Clamp middle Side OUT

Use P0000053 6mm tee connector to split feed of 3869 Pipe to feed both above regulators Port In



Step 17 - Connect Y351

Connect 3519 to Clamp infeed side Regulator port IN

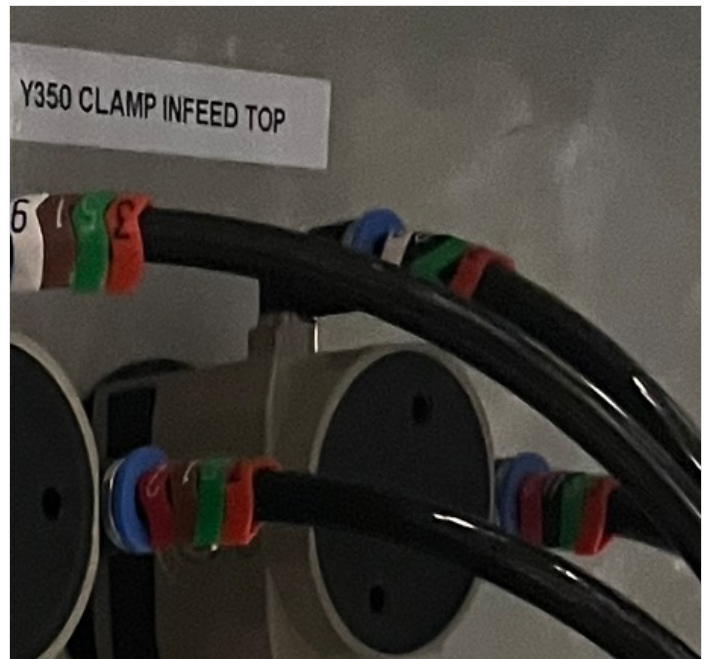
Connect 3512 to Clamp infeed side Regulator port OUT



Step 18 - Connect Y350

Connect 3509 to Clamp Infeed top regulator port IN

Connect 3502 to Clamp infeed Top regulator port OUT



Step 19 - Connect Y395

Connect 3952 to Clamp V top regulator Port OUT

Connect 3953 to Clamp V side regulator port OUT

Use P0000053 6mm tee connector to split feed of 3959 Pipe to feed both above regulators Port In



Step 20 - Check Connection for air gun

Ensure Out port of air gun regulator is connected to bulkhead as shown

