


# R0000699B Bench Assemble Drive chains

Bench assemble of Drive chains for Module A

 Difficulty Easy

 Duration 5 hour(s)

## Contents

Introduction

Step 1 - Insert strengthening plate into peg

Step 2 - Fit to drive chain

Step 3 - Fit securing Fastener

Step 4 - Repeat For remaining loader pegs

Comments

## Introduction

### Tools Required

Drill Driver

Pozi 2 attachment

### Parts Required

B0001207 x 9

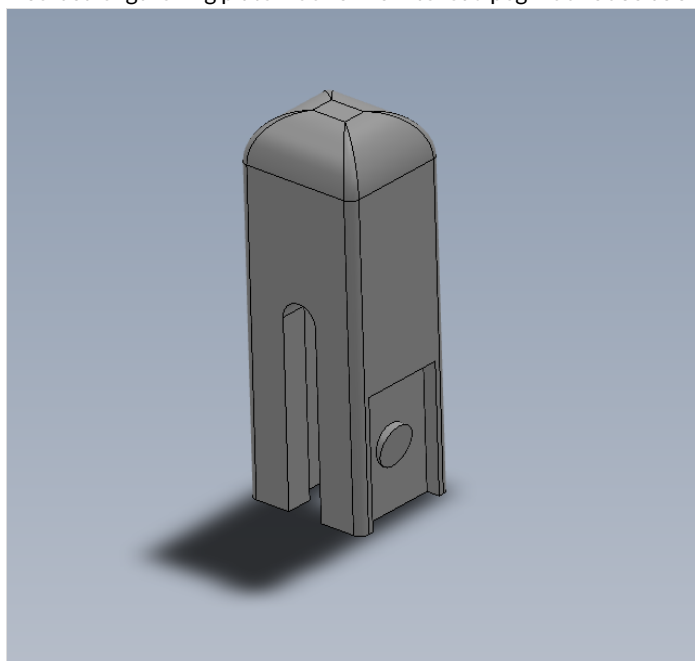
D0016035 x 171

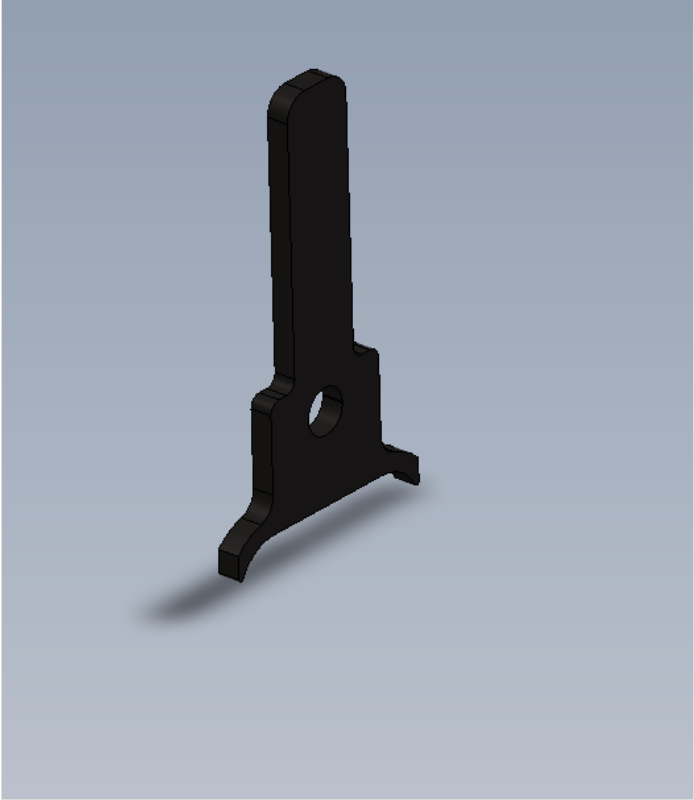
D0016416 x 171

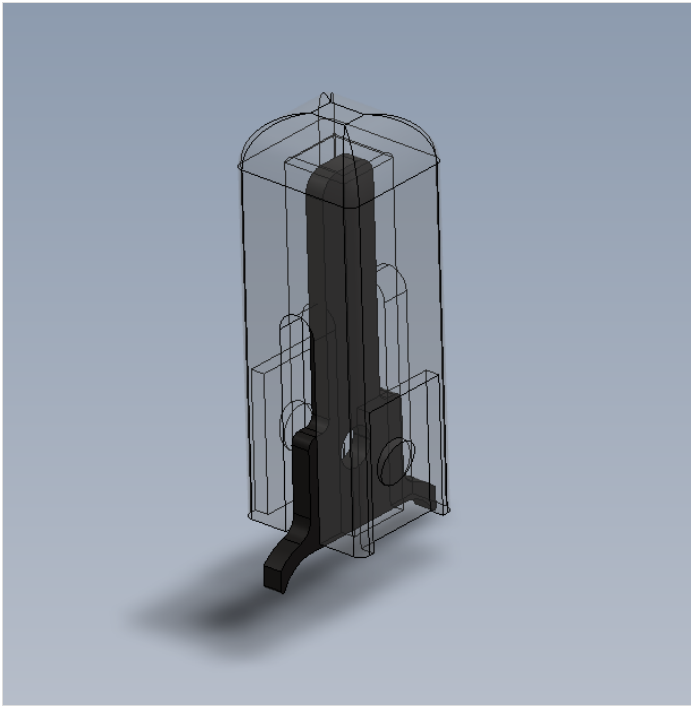
F0000621 x 180

## Step 1 - Insert strengthening plate into peg

Insert strengthening plate D0016416 into load peg D0016035 as shown

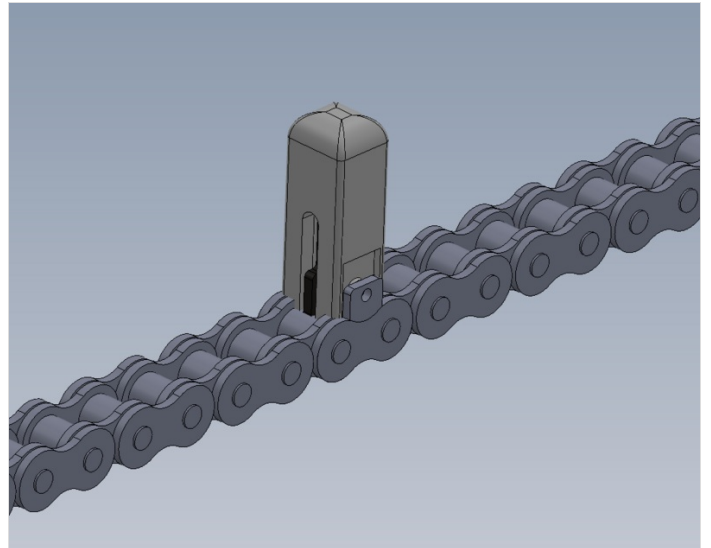
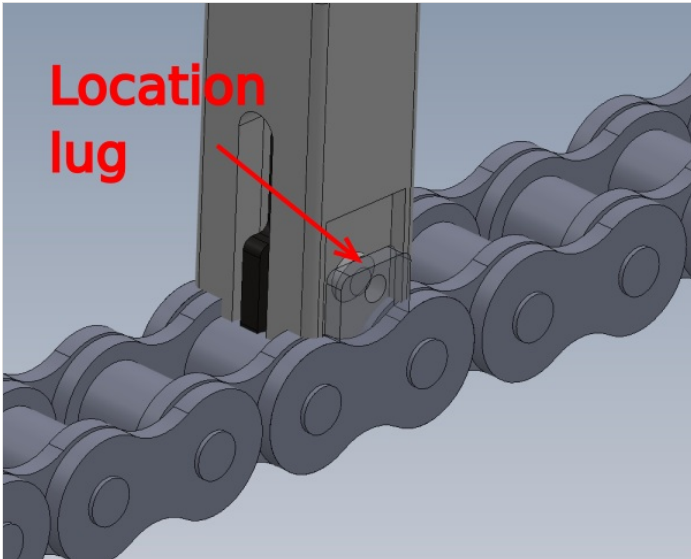






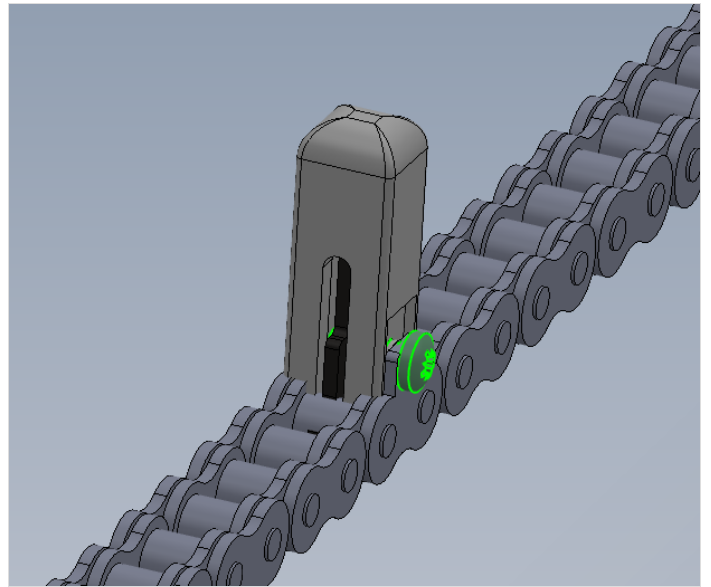
## Step 2 - Fit to drive chain

Position onto drive chain ensuring location lugs are aligned



## Step 3 - Fit securing Fastener

Fit self tapping faster F0000621 as shown to ONE side only



---

## Step 4 - Repeat For remaining loader pegs

Repeat process on all drive pegs

Ensure securing fastener is fitted to the same side of all loading pegs on each chain assembly

