



# PLC Source Control - Adding a Repository

How to create a Development Branch within the TwinCAT3 source control

 Difficulty Easy

 Duration 5 minute(s)

## Contents

Introduction

Prerequisites tutorials

Step 1 - Open Team Explorer

Step 2 - Manage Connections

Step 3 - Add Repository

Step 4 - Select Repository

Step 5 - Team Explorer Home Screen

Step 6 - Branches

Step 7 - Branches Detail

Step 8 - Working with Git and Tc Xae Shell



Comments

## Introduction

These instructions give details of how to set up a repository so that any changes made to the core project will be tracked. For the git source control to work it is important that GIT has been chosen as the source control program. see Prerequisites.

The instructions start from : The project has been created and PLC code has been loaded in to the TwinCAT Xae Shell program.

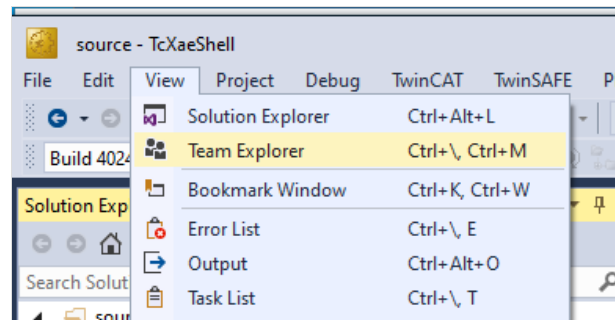
## Prerequisites tutorials

-  [Create a TwinCAT Project from Scratch](#)
-  [PLC Source Control - Selecting GIT as the source control Plug-in](#)

## Step 1 - Open Team Explorer

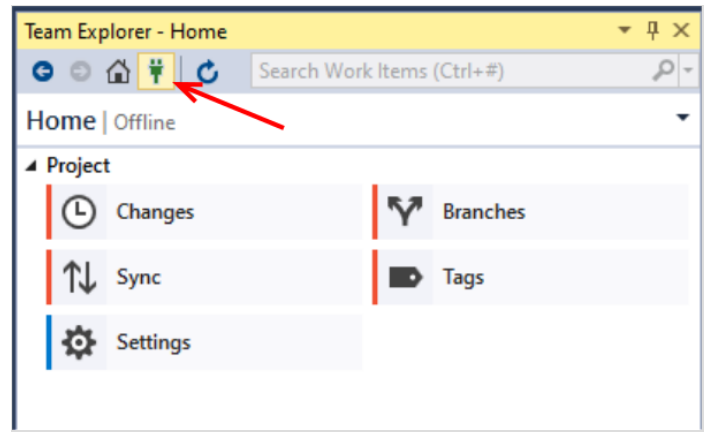
Select View

From the Drop-down menu select Team Explorer



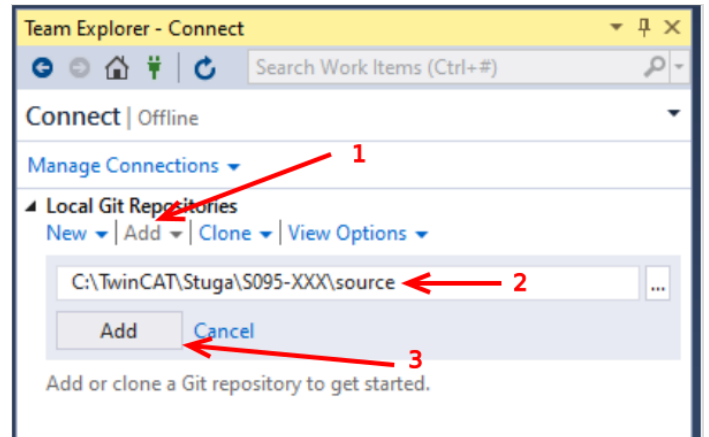
## Step 2 - Manage Connections

Select Connections Icon



## Step 3 - Add Repository

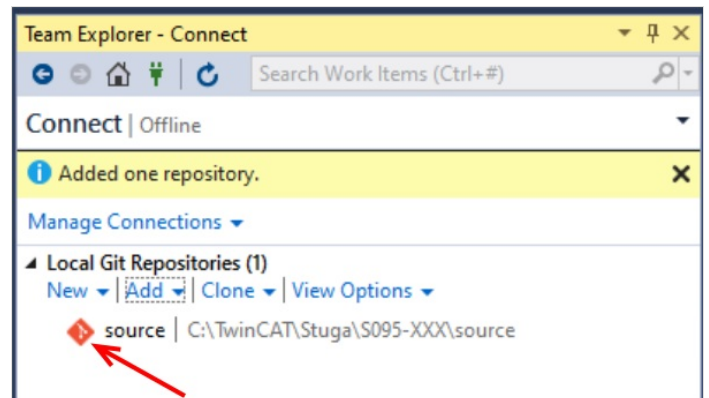
- 1 Select the Add Option
2. Enter the path of the source folder for your project
3. Press Add button to add the repository



## Step 4 - Select Repository

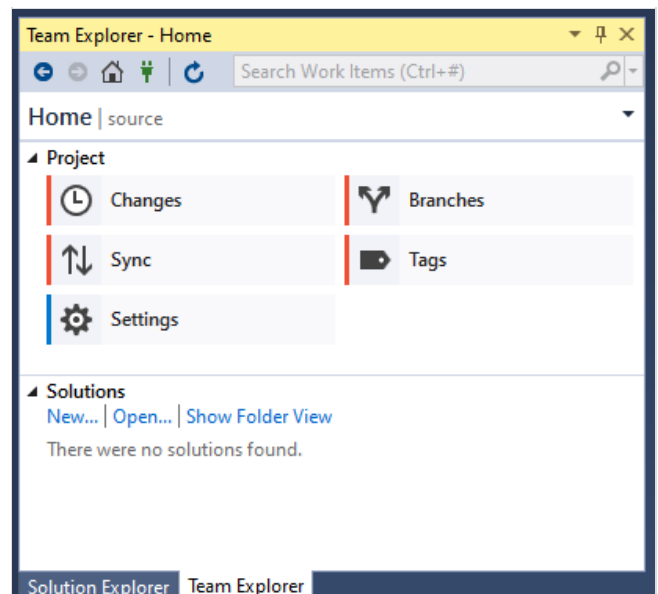
The Repository has been added

1. Select Connections Icon by selecting the red square to show the project.



## Step 5 - Team Explorer Home Screen

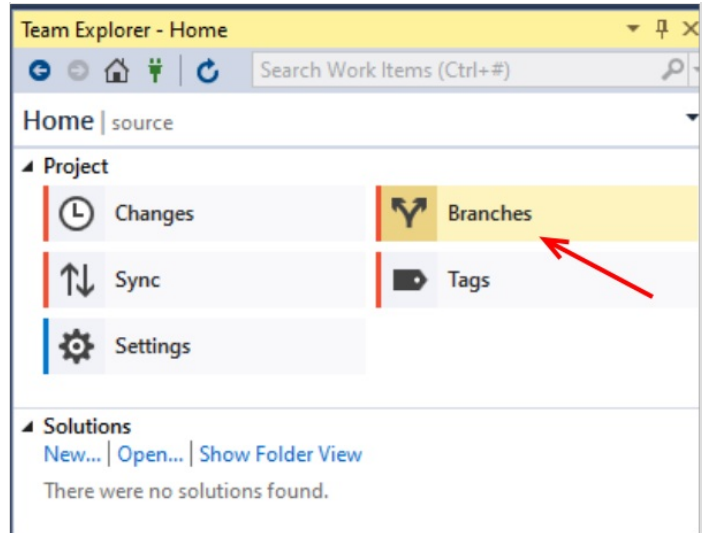
This is the main screen for the version control commands



---

## Step 6 - Branches

Select the Branches option

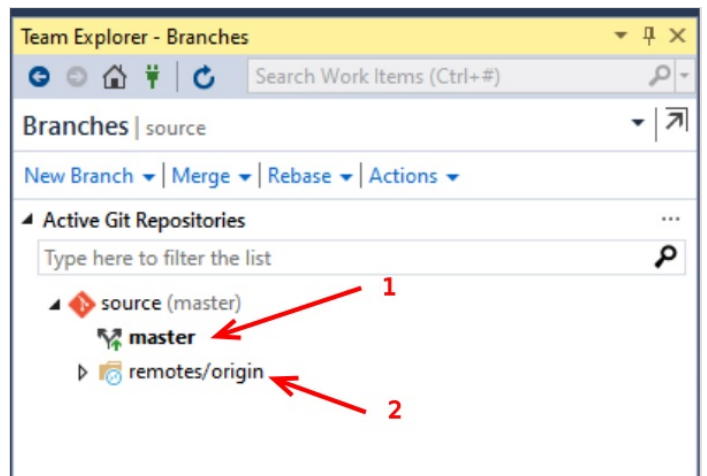


---

## Step 7 - Branches Detail

This panel now shows the Branches Available

1. The **master** branch this is the main copy of the program in the local folders.
2. The **remote/origin** this is the remote repository



---

## Step 8 - Working with Git and Tc Xae Shell

For more information on Source Control and working with Tc Xae Shell . follow the link.  
PLC Source Control - Working with GIT and TcXaeShell#Introduction

---