

# R0015351 Mount monitor to Frame

Instructions to mount monitor to main frame

 Difficulty **Medium**

 Duration **1 hour(s)**

## Contents

Introduction

Step 1 - Fit mounting post to frame

Step 2 - Attach monitor mount arm

Step 3 - Fit Bracket to monitor

Step 4 -

Step 5 -

Step 6 -

Step 7 -

Comments

## Introduction

### Tools Required

Standard spanner set

Standard hex key set

### Parts Required

D0015142 monitor mount post

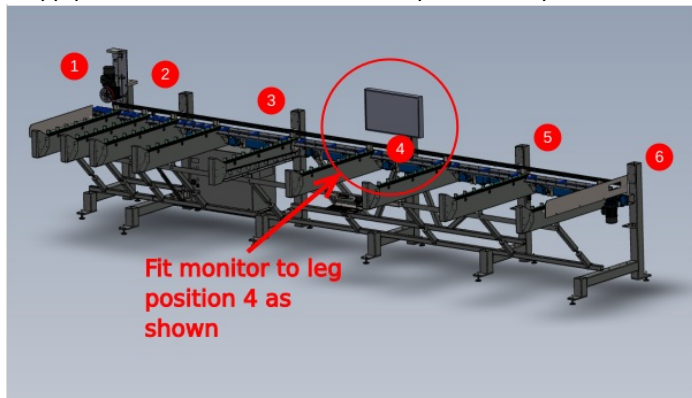
E0001186 Monitor 32"

M0001060 monitor mount

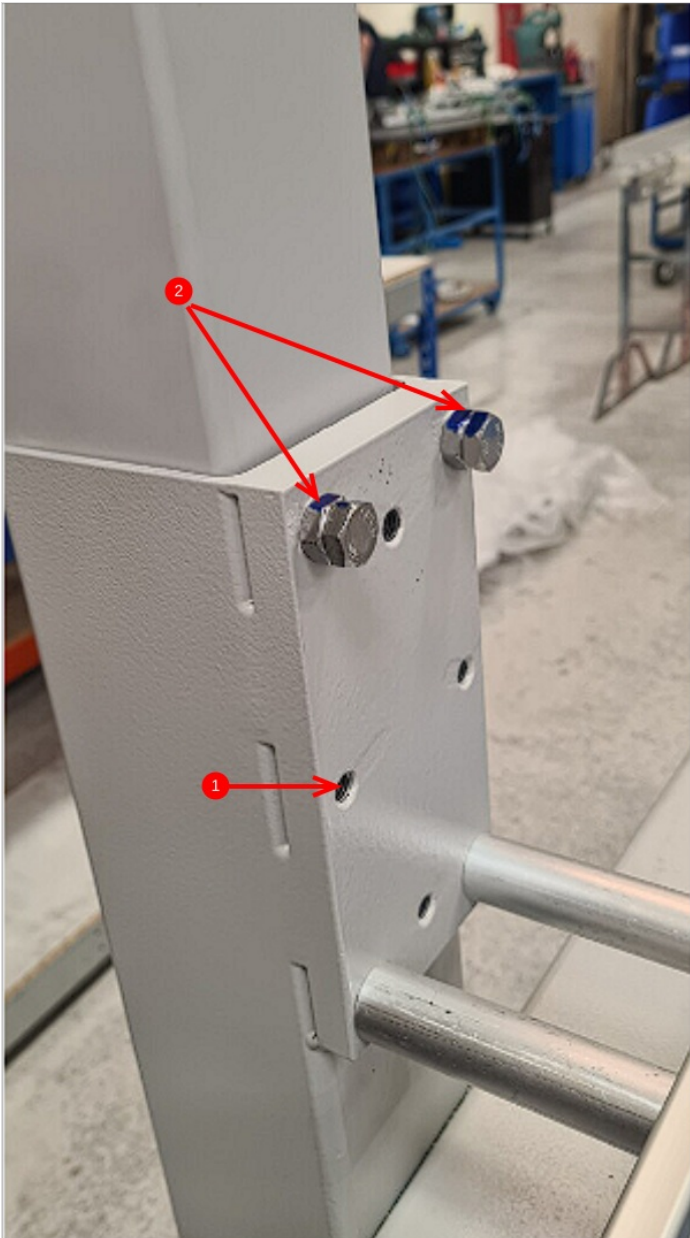
## Step 1 - Fit mounting post to frame

1 slide in monitor mount D0015142 into frame until bottom of post is visible through second set of holes (indicated)

2 Apply tension to M10 x 30 set bolts to pin monitor post and lock tension with the M10 nuts







## Step 2 - Attach monitor mount arm

Attach Monitor mount as shown using M6 x 20 countersink bolts and lock off inside the post with M6 nyloc nuts



---

## Step 3 - Fit Bracket to monitor



---

Step 4 -

---

Step 5 -

---

Step 6 -

---

Step 7 -

---