

Masterdir File

Description of masterdir.saw file

Contents

Runtime Setup

Diagnostic / Standalone Setup

Comments

The masterdir.saw file is very important. It is located in the startup directory of the winMulti or winSaw control programs. The file points to the working directory of the front end software which is used for:

- Initialisation files (*.saw, *.mul)
- Diagnostic records
- Archive files

Runtime Setup

Control Software	Machines		Examples
winSaw	Saw only	Contains one text line directing the software to the running directory	<div style="border: 1px solid black; padding: 2px; width: fit-content;">c:\saw\</div> <div style="border: 1px solid black; padding: 2px; width: fit-content; margin-top: 5px;">d:\</div>
winMulti	All others	Two text lines 1. Directing to the MH side running directory 2. Directing to the saw side running directory	<div style="border: 1px solid black; padding: 2px; width: fit-content;">c:\multi\ c:\saw\</div>

Examples

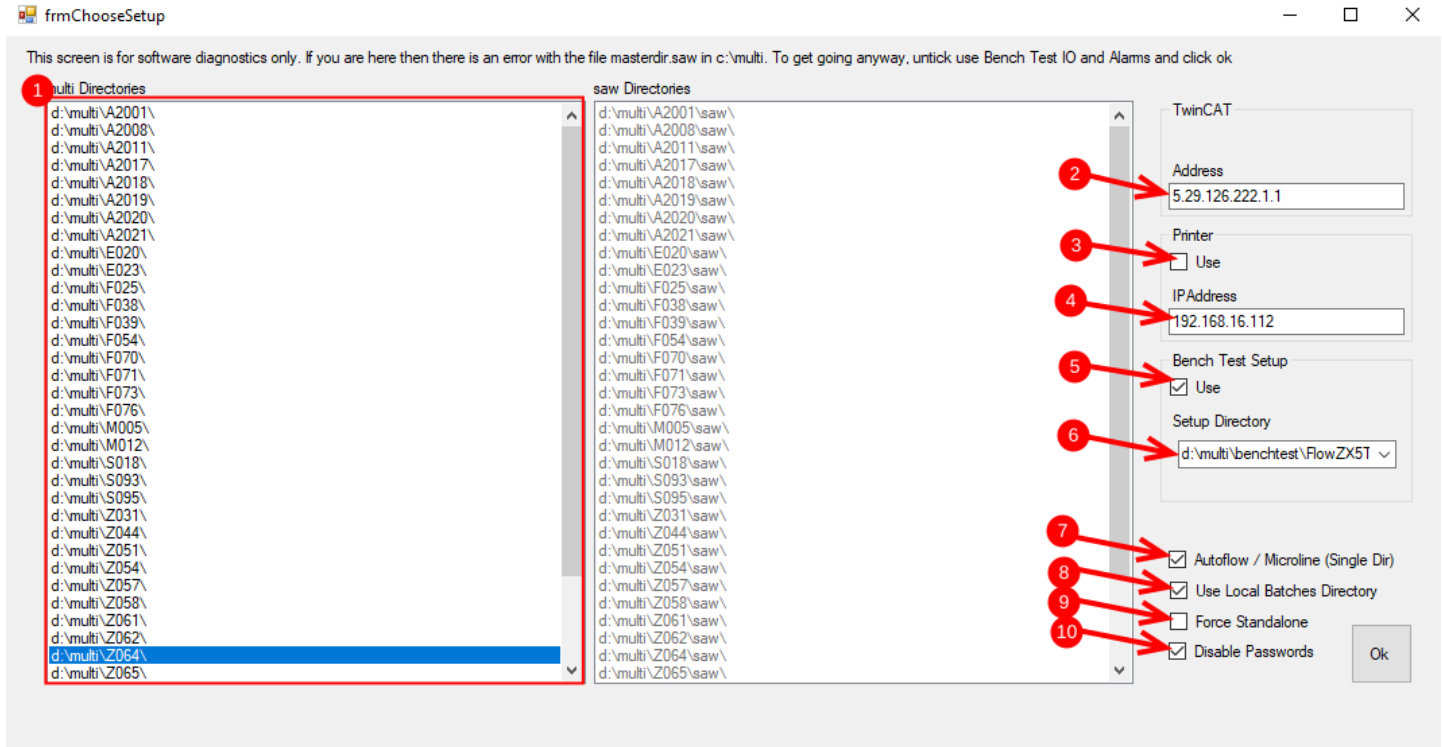
Autoflow with Beckhoff front end PC and Camera PC - .mul and .saw data stored in c:\DDRIVE\ on CameraPC - mapped directory d: from front end	<div style="border: 1px solid black; padding: 2px; width: fit-content;">d:\</div> <div style="border: 1px solid black; padding: 2px; width: fit-content; margin-top: 2px;">d:\</div>	
Flowline On Nextmove System with separate MH and Saw PC - .mul data stored on MH in c:\multi\ - .saw data stored on MH in c:\saw\ - Saw mapped directory d:\ to MH c:\saw	MH side <div style="border: 1px solid black; padding: 2px; width: fit-content;">c:\multi\ c:\saw\</div>	Saw Side <div style="border: 1px solid black; padding: 2px; width: fit-content;">d:\</div>
Ecoline or Autoflow with Beckhoff front end PC and DDRIVE on a memory stick - .mul and .saw data stored in d:\DDDRIVE	<div style="border: 1px solid black; padding: 2px; width: fit-content;">d:\ddrive\ d:\ddrive\</div>	
ZX with Front end PC and Beckhoff backend controlling both MH and Saw side - .mul and .saw data stored in c:\DDDRIVE	<div style="border: 1px solid black; padding: 2px; width: fit-content;">c:\ddrive\ c:\ddrive\</div>	

Diagnostic / Standalone Setup

Further functions of the file can be unlocked by changing the first line of the file to


```
ask=[root directory]
```

where [root directory] is an accessible directory containing actual machine setups. Each machine setup should be in its own directory - the standard is to name each one after the build number of the machine. This initiates the winMulti program to launch a "Choose Setup" form at the start which scans all the subdirectories in [root directory] for params.saw files



Guide

	Field	Description
1	Directory Chooser	Lists all the subdirectories in [Root Directory] containing a params.saw file
2	TwinCAT Address	If connected to a "demomode" TwinCAT system, this is the TwinCAT AmsId of the target
3	Printer	Untick to disable a printer if you do not have one attached
4	Printer IP address	IP address of your printer <div style="background-color: #e0f0ff; padding: 5px; border: 1px solid #add8e6;"> <p>i ...this will invariably be different to the one in the backup form the machine, so saves you having to edit params.mul to change it if you are testing a printer</p> </div>
5	Bench Test Checkbox	Tick to use a set of .mul files specifically for running hardware that is not physically connected to a machine <div style="background-color: #e0f0ff; padding: 5px; border: 1px solid #add8e6;"> <p>i ..."benchTest" is a specific term used by winMulti when an actual machine is not connected, but the controller hardware (Nextmove card or TwinCAT system) is. Eg no servos or physical IO</p> </div>
6	Benchtest setup directory	The benchtest .mul files should be stored in [root directory]\benchtest - a subdirectory for each machine type. The dropdown box queries the contents of [root directory]\benchtest
7	Single or Multiple Dir	Tick when there is only one setup directory. Only untick when using the software on older setups when there is are two distinct PCs running the machine (eg multi and saw)

8	Use Local Batches	use a local batch directory [root directory]\batches for batch storage  ...this will invariably be different to the one in the backup from the machine, so saves you having to edit params.mul to change it
9	Force Standalone	Tick to run the software without any hardware at all. A "standalone" virtual machine will appear in a separate form, but I have not kept this up to date and may be buggy
10	Disable Passwords	Disables any passwords in the customer data

Each time you use this feature, the software uses the masterdir.saw file to store the setup from last time, which saves you having to change parameters each time.

```
ask=d:\multi\
d:\multi\Z064\
d:\multi\Z064\
True
True
False
192.168.16.112
False
True
5.29.126.222.1.1
d:\multi\benchtest\FlowZX5TwinSafe\
```