



# ZX5 Operator Manual

Stuga ZX5 Operator Manual

## Introduction

Contacting Stuga Service



How to report an issue on Stuga Machinery

Stuga Machinery Environmental Considerations

This section of the manual addresses the environmental considerations relevant to the use of the machine



ZX5 Specification

Specifications for Stuga ZX5

## Safe Operation Of Machine

Stuga Machinery Operator Responsibilities

Responsibilities for the operators and maintenance operatives when using Stuga machinery



Provision and Use of Work Equipment Regulations (PUWER) standards, it is essential to prioritize the safety and well-being operators and other personnel in the vicinity. One crucial aspect of this safety standard is the requirement for ear protection operating or working near noisy machinery.

Stuga LEV Statement

Stuga policy on LEV regulations

ZX5 Safety Standards And Compliance

ZX5 Safety Standards And Compliance

Stuga Machinery Safety Labels and Signs

Safety Signs and Labels Used on Stuga Machinery

## Emergency procedures

## Installation Instructions

ZX5 Installation Procedure

Correct procedure for ZX5 Installation

# Commissioning and Startup

## Operating Instructions

## Maintenance and Servicing



### Important Information - Stuga Machinery

This maintenance log is designed to be used in conjunction with the Stuga Daily, Weekly and Monthly maintenance procedures. Maintenance procedures are essential to the function of the machine and must be carried out.



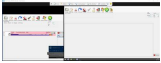
### ZX5 Weekly Maintenance Checklist

Weekly Maintenance Checklist for ZX5 Machine

## Troubleshooting

### TB0410 Common winMulti Startup Problems

Common winMulti Startup Problems



### Common Problem - Screen Alignment

MH Screen is about 50mm away from the top after F10 reset

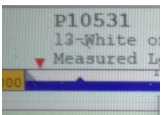


### Common Issue - Mitre Cuts Cutting Short

If the length of pieces with mitred ends are too short from the saw, there are some simple root causes to check

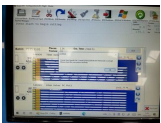
### Common Issue - Datum Holes in Wrong position

Common root causes that may lead to a varying result when running a datum test



### Common Issue - V Notching Too Close To End Of Bar

Problems generated if V notch is too close to end of bar



### Common Issue - Critical Saw File AQS is corrupt

How to restart machine after "Critical Saw Queue File ..... is Corrupt. Please check the saw queue carefully"



### Common Issue - Initialising - Cannot Connect to PLC

Cannot connect to TwinCAT PLC on switch on

## Spare Parts List