



ZX5 Commissioning

Commissioning protocols for the ZX5



TB0422 Commissioning ZX5 Software 2018
0422 Commissioning ZX5 Software 2018



Updating the Touchscreen Driver

This tutorial will walk you through how to update the touchscreen driver on any machine with either one or two touchscreens



Hikvision Camera Setup

Setting up the Hikvision cameras and recording system



TB0452 ZD620 Zebra Printer Setup

This document outlines the setup of the new ZD620 printers to replace the older Zebra 420d printers that are obsolete.



Commissioning a Beckhoff Axis

How to test the function of a Beckhoff axis during commissioning



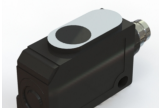
TB0445 ZX5 Setup - Infeed Measure Sensor Calibration

ZX5 Setup - Infeed Measure Sensor Calibration



Commissioning - Off-Cut Laser Sensor

Setting up the laser sensors on the infeed of a Flowline, ZX4 and ZX5.



Setting Ultrasonic Sensor - Vertical

How to set ultrasonic sensor to detect profile



ZX5 V Notch Blade Mechanical Setup

How to mechanically set the V notches on a ZX5.



ZX5 Adjusting V Notch Depth and Position

How to change the depth and position of the V notch on a ZX5 machine

Gripper Setup - ZX5

How to set up the toothed gripper on the ZX5 machine



ZX5 Transfer Table Crank set up

How to set up the cranks mechanically so the correct overlaps and limits are achieved.

Setting Arrow Heads on ZX5 or ZX5-E

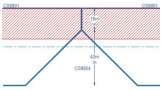
How to set arrow heads on Stuga ZX5 and ZX5e machines with the SY axis and Y notching on saw

TB0447 ZX5 Setup - X Axis Beam Calibration

ZX5 Setup - X Axis Beam Calibration

Y Notch Adjustment ZX5

Adjustment of Y notches on ZX5 Machine or Sawing centre fitted with "Y-Drive" on saw clamping



TB0434 Setting Up Deep Y notches on ZX5

The saw "Y drive" on a ZX5 is limited in its depth range to +/- 20mm from the centreline of the profile, and 20mm from the b:
This is fine for most normal Y notching, but there are combinations when a particularly deep Y notch is required.