



Autoflow Mk2 Maintenance Manual

Daily, Weekly and Monthly Maintenance Procedures for Autoflow Mk2 / 3 A2005-A2025

Recommendations



Contacting Stuga Service

How to report an issue on Stuga Machinery



Important Information - Stuga Machinery

This maintenance log is designed to be used in conjunction with the Stuga Daily, Weekly and Monthly maintenance procedures. These maintenance procedures are essential to the function of the machine and must be carried out.



Recommended Lubricants

Lubrication is essential for reliability and extended life of your Stuga machine



Machine References and Naming - Autoflow

Describes the names used for the Inputs, Outputs and Servo drives

Regular Maintenance Procedures



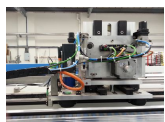
Autoflow Mk1-Mk3 Daily Maintenance

Autoflow Mk1 - 3 Daily Maintenance Procedures to be carried out by Operators



Autoflow Maintenance - Infeed

Weekly and Monthly Maintenance Procedures for Autoflow Infeed Table



Autoflow Maintenance - Gripper

Weekly and Monthly Maintenance Procedures for Autoflow Gripper



Autoflow Maintenance - Machining Centre

Procedures for Maintenance of the Autoflow Machining Centre Module



Autoflow Maintenance - Sawing Centre

Procedures for Daily, Weekly and Monthly Maintenance on Autoflow Sawing Centre Module



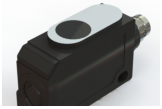
Autoflow Maintenance - Outfeed Table

Procedures for Daily, Weekly and monthly maintenance on Autoflow Outfeed Table

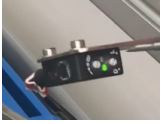
Setup Procedures



Autoflow Mk3 Infeed Measurements
Description of the important Autoflow Mk3 Measurements



Setting Ultrasonic Sensor - Vertical
How to set ultrasonic sensor to detect profile



Setting Profile Detection Laser Sensor
Setting the laser sensor used on Flowline / ZX offcut sensors and Autoflow measurement sensors