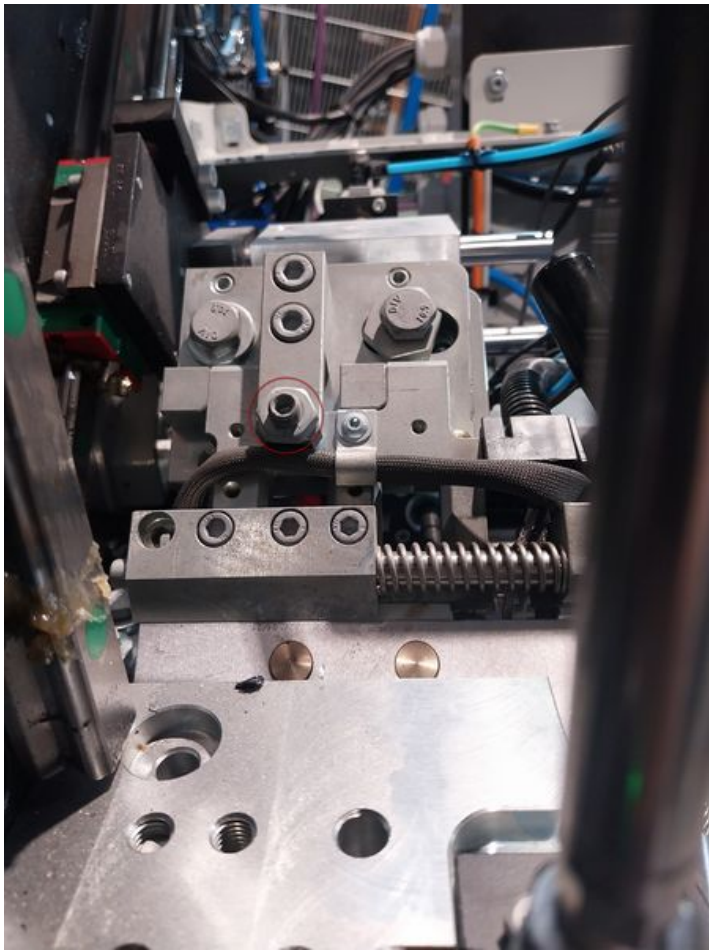


Fichier:VSM 20-30-P VertiQuad Heater Plate Setting 4.jpg




Size of this preview: 450 × 600 pixels.

Original file (3,060 × 4,080 pixels, file size: 4.43 MB, MIME type: image/jpeg)

VSM_20-30-P_VertiQuad_Heater_Plate_Setting_4

File history

Click on a date/time to view the file as it appeared at that time.

	Date/Time	Thumbnail	Dimensions	User	Comment
current	10:03, 3 November 2023		3,060 × 4,080 (4.43 MB)	Gareth Green (talk contribs)	VSM_20-30- P_VertiQuad_Heater_Plate_Setting_4

You cannot overwrite this file.

File usage

The following page links to this file:

VSM 20-30-P VertiQuad Heater Plate Setting

Metadata

This file contains additional information, probably added from the digital camera or scanner used to create or digitize it. If the file has been modified from its original state, some details may not fully reflect the modified file.

Camera manufacturer	samsung
Camera model	SM-A236B
Exposure time	1/50 sec (0.02)

F Number	f/1.8
ISO speed rating	200
Date and time of data generation	10:52, 19 October 2023
Lens focal length	4 mm
Latitude	0° 0' 0" N
Longitude	0° 0' 0" E
Altitude	0 meters above sea level
Width	4,080 px
Height	3,060 px
Orientation	Normal
Horizontal resolution	72 dpi
Vertical resolution	72 dpi
File change date and time	10:52, 19 October 2023
Y and C positioning	Centered
Exposure Program	Normal program
Exif version	2.2
Date and time of digitizing	10:52, 19 October 2023
Meaning of each component	<ol style="list-style-type: none"> 1. Y 2. Cb 3. Cr 4. does not exist
APEX shutter speed	5.643
APEX aperture	1.69
APEX brightness	1.37
APEX exposure bias	0
Maximum land aperture	1.69 APEX (f/1.8)
Metering mode	Center weighted average
Light source	D65
Flash	Flash did not fire, compulsory flash suppression
DateTime subseconds	784,567
DateTimeOriginal subseconds	784,567
DateTimeDigitized subseconds	784,567
Supported Flashpix version	0,100
Color space	sRGB
Sensing method	Undefined
Scene type	A directly photographed image
Exposure mode	Auto exposure
White balance	Auto white balance
Focal length in 35 mm film	26 mm
Scene capture type	Standard
GPS time (atomic clock)	00:00
GPS date	1 January 1970