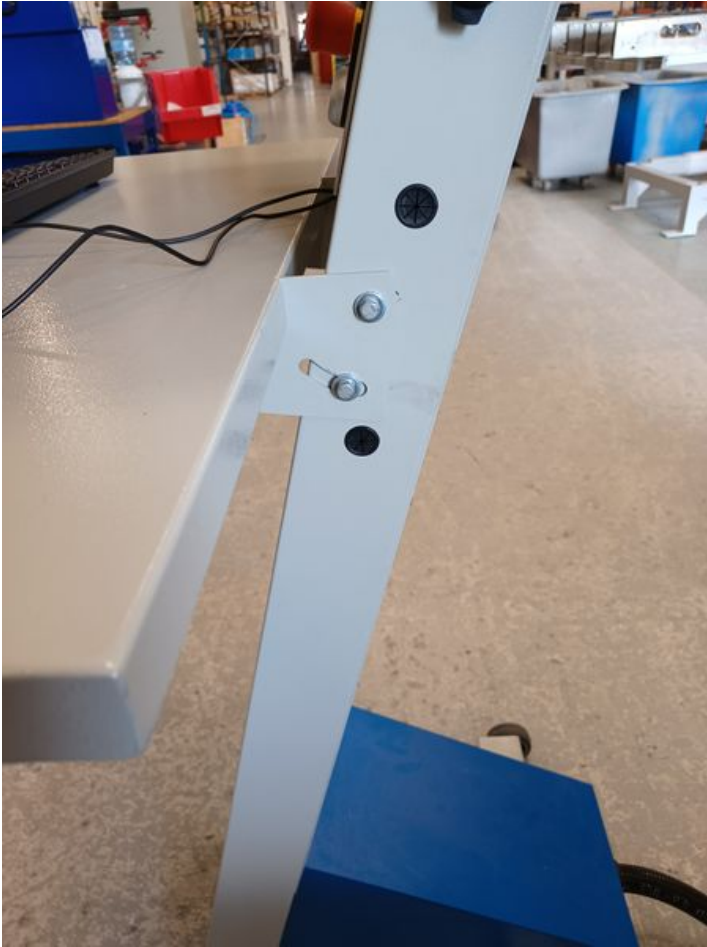


Fichier:Sturtz Welder Installation 20220516 144338.jpg




Size of this preview: 450 × 600 pixels.

Original file (3,000 × 4,000 pixels, file size: 2.39 MB, MIME type: image/jpeg)

Sturtz_Welder_Installation_20220516_144338

File history

Click on a date/time to view the file as it appeared at that time.

	Date/Time	Thumbnail	Dimensions	User	Comment
current	15:54, 16 May 2022		3,000 × 4,000 (2.39 MB)	Stuga Engineer (talk contribs)	Sturtz_Welder_Installation_20220516_144338

You cannot overwrite this file.

File usage

The following page links to this file:

Stuertz VSM 30.20-P Welder Installation

Metadata

This file contains additional information, probably added from the digital camera or scanner used to create or digitize it. If the file has been modified from its original state, some details may not fully reflect the modified file.

Camera manufacturer	samsung
Camera model	SM-A326B
Exposure time	20,001/1,000,000 sec (0.020001)

F Number	f/1.8
ISO speed rating	160
Date and time of data generation	14:43, 16 May 2022
Lens focal length	4.6 mm
Width	4,000 px
Height	3,000 px
Orientation	Rotated 90° CCW
Horizontal resolution	72 dpi
Vertical resolution	72 dpi
Software used	A326BXXS4AVA8
File change date and time	14:43, 16 May 2022
Y and C positioning	Co-sited
Exposure Program	Not defined
Exif version	2.2
Date and time of digitizing	14:43, 16 May 2022
Meaning of each component	<ol style="list-style-type: none"> 1. Y 2. Cb 3. Cr 4. does not exist
APEX shutter speed	5.614
APEX aperture	1.8
APEX brightness	9.3
APEX exposure bias	0
Maximum land aperture	1.69 APEX (f/1.8)
Metering mode	Center weighted average
Light source	Other light source
Flash	Flash did not fire, compulsory flash suppression
DateTime subseconds	86
DateTimeOriginal subseconds	86
DateTimeDigitized subseconds	86
Supported Flashpix version	0,100
Color space	sRGB
Exposure mode	Auto exposure
White balance	Auto white balance
Digital zoom ratio	1
Focal length in 35 mm film	0 mm
Scene capture type	Standard